

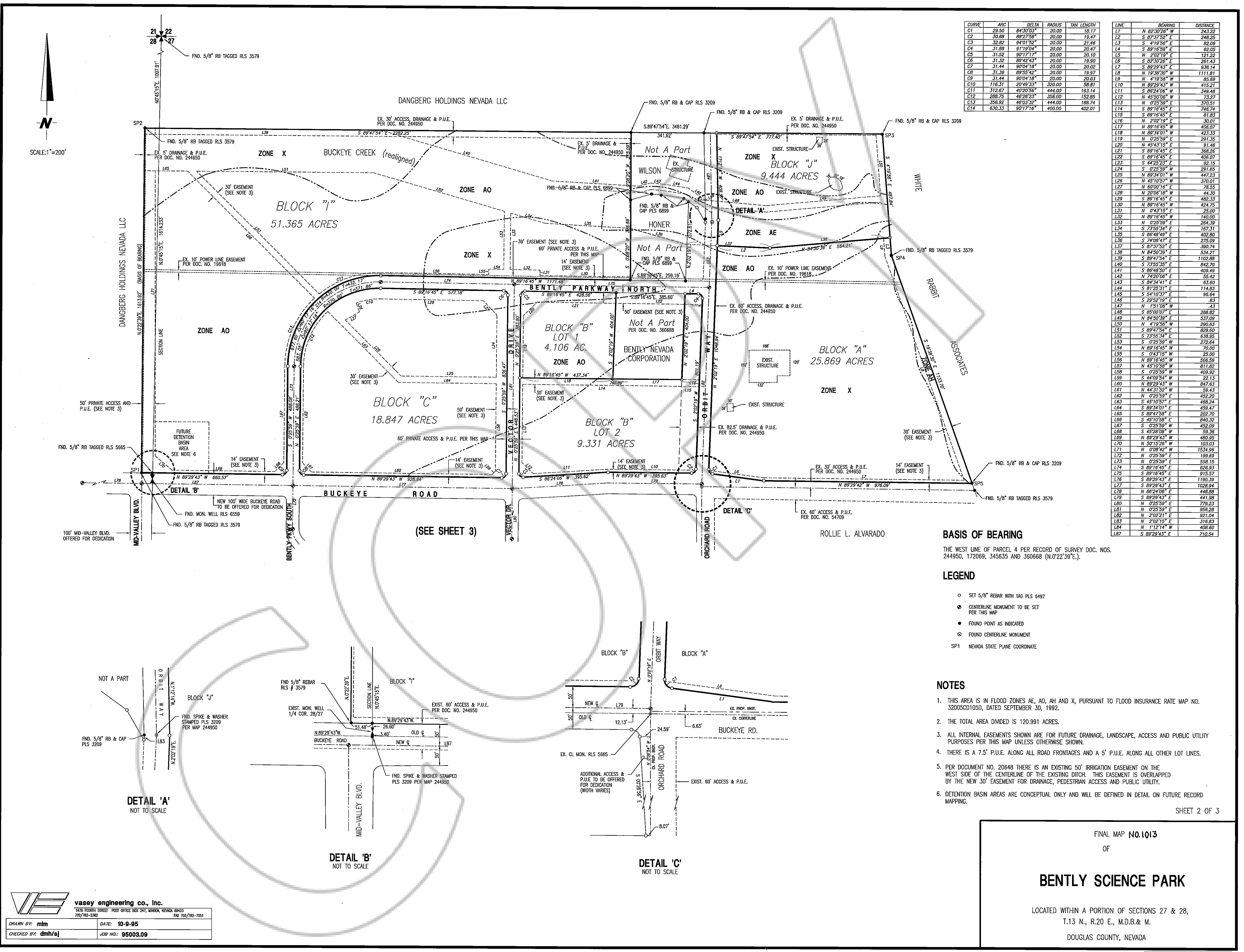


DRAWING NUMBER  
**Bentley Science Park**  
 Final Map #1013 Page 2 of 3  
 PLAN-HOLD CORPORATION • IRVINE, CALIFORNIA  
 REGISTERED PROFESSIONAL ENGINEER

DRAWING NUMBER  
 PLAN-HOLD CORPORATION • IRVINE, CALIFORNIA  
 REGISTERED PROFESSIONAL ENGINEER

DRAWING NUMBER  
 PLAN-HOLD CORPORATION • IRVINE, CALIFORNIA  
 REGISTERED PROFESSIONAL ENGINEER

DRAWING NUMBER  
 PLAN-HOLD CORPORATION • IRVINE, CALIFORNIA  
 REGISTERED PROFESSIONAL ENGINEER



CURVE	ARC	DELTA	RADIUS	TAN LENGTH	LINE	BEARING	DISTANCE
C1	29.50	84°30'03"	20.00	18.17	L11	N 82°30'26" W	243.22
C2	30.88	88°27'58"	20.00	19.47	L12	S 82°37'52" E	248.29
C3	32.82	84°01'52"	20.00	21.46	L13	S 41°56'56" E	82.09
C4	31.88	91°19'04"	20.00	20.47	L14	S 89°18'50" E	62.05
C5	31.52	90°17'17"	20.00	20.10	L15	N 2°02'19" E	121.22
C6	31.32	89°42'43"	20.00	19.90	L16	S 82°30'26" E	261.43
C7	31.44	90°04'18"	20.00	20.02	L17	S 82°29'43" E	838.14
C8	31.39	89°55'42"	20.00	19.97	L18	N 19°38'30" W	1111.81
C9	31.44	90°04'18"	20.00	20.03	L19	N 4°19'56" W	85.69
C10	116.31	20°49'11"	320.00	58.81	L20	N 82°29'43" W	415.21
C11	312.67	40°20'56"	444.00	163.14	L21	S 82°29'43" W	348.48
C12	288.75	46°28'23"	358.00	152.85	L22	N 45°50'06" W	73.27
C13	358.92	46°03'32"	444.00	188.74	L23	N 0°29'59" E	370.51
C14	630.33	90°17'18"	400.00	402.01	L24	S 89°18'45" E	748.74
					L25	S 89°18'45" E	81.83
					L26	N 2°02'19" E	30.01
					L27	N 89°18'45" W	406.07
					L28	N 82°34'01" W	423.33
					L29	N 0°29'59" E	291.35
					L30	N 45°43'15" E	91.46
					L31	S 89°18'45" E	368.26
					L32	S 89°18'45" E	408.07
					L33	S 44°25'23" E	82.15
					L34	S 0°29'59" W	291.65
					L35	N 89°34'01" W	447.23
					L36	N 45°10'57" E	370.01
					L37	N 60°00'16" E	92.15
					L38	N 20°06'18" W	44.30
					L39	S 89°18'45" E	482.33
					L40	N 89°18'45" W	424.75
					L41	S 0°43'15" E	25.00
					L42	N 89°18'45" W	140.00
					L43	N 0°29'59" E	264.39
					L44	S 73°55'34" E	163.31
					L45	S 86°48'49" E	402.80
					L46	S 74°08'47" E	275.09
					L47	S 87°37'52" E	360.74
					L48	N 41°50'57" W	534.21
					L49	S 82°47'54" E	1102.88
					L50	S 73°55'35" E	842.70
					L51	S 86°48'50" E	408.49
					L52	S 29°52'19" E	43
					L53	N 1°51'06" W	43
					L54	S 85°00'07" E	288.82
					L55	N 84°30'39" E	537.09
					L56	N 1°19'56" W	290.83
					L57	S 82°47'54" E	828.60
					L58	S 73°55'34" E	638.95
					L59	S 0°29'59" W	272.84
					L60	N 89°18'45" W	70.00
					L61	S 0°43'15" W	25.00
					L62	N 89°18'45" W	506.59
					L63	N 45°10'58" W	811.82
					L64	S 0°29'59" W	408.92
					L65	S 44°09'54" W	22.13
					L66	N 89°29'43" W	847.83
					L67	N 44°31'52" W	59.43
					L68	N 0°29'59" E	452.20
					L69	S 45°10'57" E	468.24
					L70	S 89°34'01" E	458.47
					L71	S 89°47'58" E	202.70
					L72	S 45°10'58" E	840.32
					L73	S 0°29'59" W	452.09
					L74	S 45°28'08" W	59.36
					L75	N 89°29'43" W	480.95
					L76	N 0°29'59" W	103.03
					L77	N 0°08'42" W	153.96
					L78	N 0°29'59" E	159.69
					L79	N 0°29'59" E	558.15
					L80	S 89°18'45" E	626.93
					L81	S 89°18'45" E	915.57
					L82	S 89°29'43" E	1190.39
					L83	N 89°24'08" E	1028.94
					L84	S 89°29'43" E	441.98
					L85	N 0°29'59" E	778.23
					L86	N 0°29'59" E	956.28
					L87	N 2°02'21" E	821.04
					L88	N 2°02'15" E	316.83
					L89	N 1°12'14" W	408.60
					L90	S 89°29'43" E	710.54

**BASIS OF BEARING**

THE WEST LINE OF PARCEL 4 PER RECORD OF SURVEY DOC. NOS. 244950, 172069, 345635 AND 360668 (N.0°22'39"E.).

**LEGEND**

- SET 5/8" REBAR WITH TAG PLS 8497
- CENTERLINE MONUMENT TO BE SET PER THIS MAP
- FOUND POINT AS INDICATED
- FOUND CENTERLINE MONUMENT
- SP1 NEVADA STATE PLANE COORDINATE

**NOTES**

1. THIS AREA IS IN FLOOD ZONES AE, AO, AH AND X, PURSUANT TO FLOOD INSURANCE RATE MAP NO. 32005C01050, DATED SEPTEMBER 30, 1992.
2. THE TOTAL AREA DIVIDED IS 120.991 ACRES.
3. ALL INTERNAL EASEMENTS SHOWN ARE FOR FUTURE DRAINAGE, LANDSCAPE, ACCESS AND PUBLIC UTILITY PURPOSES PER THIS MAP UNLESS OTHERWISE SHOWN.
4. THERE IS A 7.5' P.U.E. ALONG ALL ROAD FRONTAGES AND A 5' P.U.E. ALONG ALL OTHER LOT LINES.
5. PER DOCUMENT NO. 20648 THERE IS AN EXISTING 50' IRRIGATION EASEMENT ON THE WEST SIDE OF THE CENTERLINE OF THE EXISTING DITCH. THIS EASEMENT IS OVERLAPPED BY THE NEW 30' EASEMENT FOR DRAINAGE, PEDESTRIAN ACCESS AND PUBLIC UTILITY.
6. DETENTION BASIN AREAS ARE CONCEPTUAL ONLY AND WILL BE DEFINED IN DETAIL ON FUTURE RECORD MAPPING.

SHEET 2 OF 3

FINAL MAP NO.1013  
 OF  
**BENTLEY SCIENCE PARK**  
 LOCATED WITHIN A PORTION OF SECTIONS 27 & 28,  
 T.13 N., R.20 E., M.D.B.& M.  
 DOUGLAS COUNTY, NEVADA

**vasey engineering co., inc.**  
 1418 FORBES STREET POST OFFICE BOX 247, WENGER, NEVADA 89453  
 702/782-2300 FAX 702/782-7051

DRAWN BY: **mm** DATE: **10-9-95**  
 CHECKED BY: **dmh/sj** JOB NO.: **95003.09**

