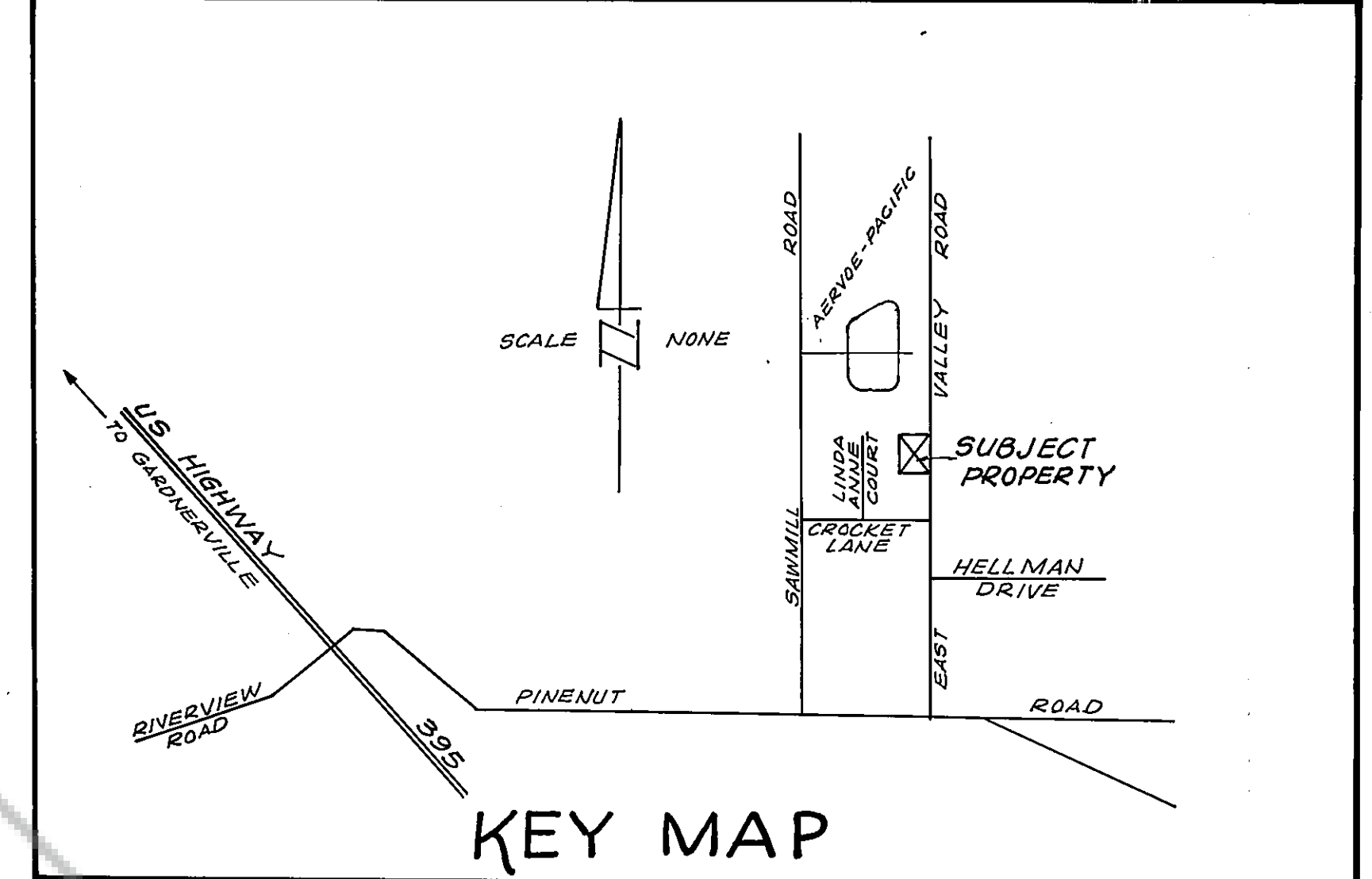
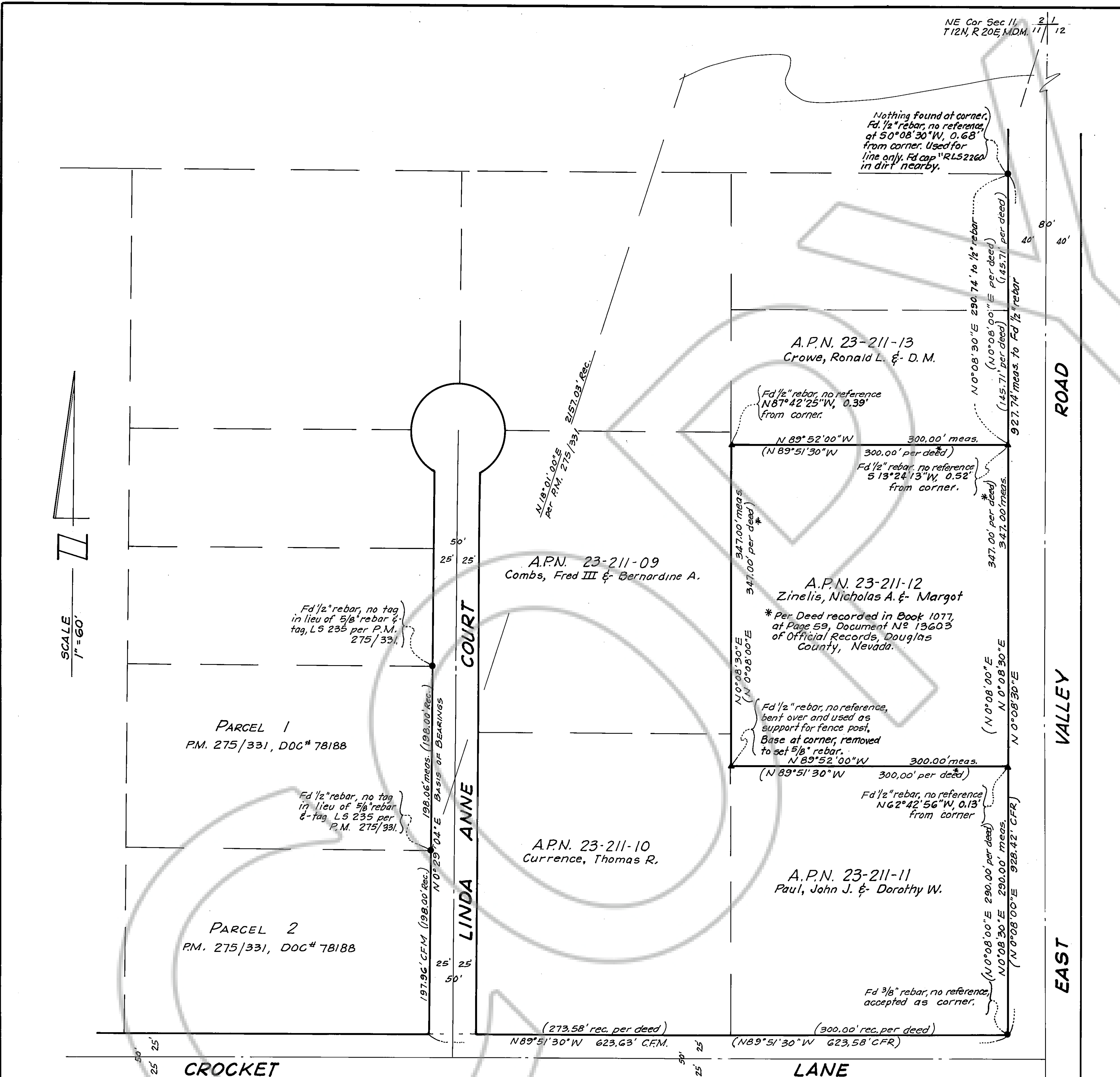


NE Cor Sec 11, T12N, R20E, MDM, 11/12

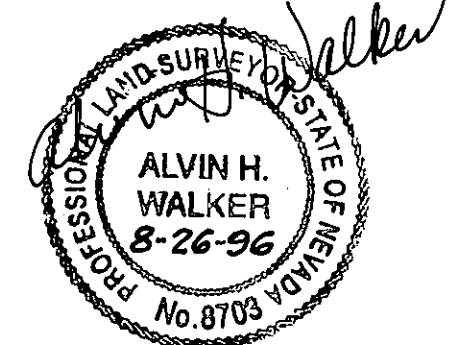


SURVEYOR'S CERTIFICATE

I, Alvin H. Walker, a Professional Land Surveyor registered in the State of Nevada, certify that:

- This plat represents the results of a survey conducted under my direct supervision at the instance of Nicholas A. and Margot Zinelis.
- The lands surveyed lie within the SE 1/4 of the NE 1/4 of Section 11, T12N, R20E, MDM and was completed on August 15, 1996.
- This plat complies with the applicable state statutes and any local ordinances.
- The monuments depicted on the plat are of the character shown, occupy the positions indicated and are of sufficient number and durability.
- This Record of Survey is not in conflict with the requirements of NRS 278.010 to 278.630, inclusive, and has not created any additional Lots or Parcels.

Alvin H. Walker
Alvin H. Walker, PLS 8703



RECORDER'S CERTIFICATE

Filed for record this 26th day of August, 1996 at 11 minutes past 12 o'clock P.M. in Book 896 of Official Records at page 4307, document No. 395032. Recorded at the request of Nicholas A. and Margot Zinelis.

Kathy Lee Jordan
Douglas County Recorder

RECORD OF SURVEY

FOR
NICHOLAS A. & MARGOT ZINELIS
MONUMENTS SET PER DEED RECORDED IN BOOK 1077, AT PAGE 59, DOCUMENT NO. 13603 OF OFFICIAL RECORDS, BEING A PORTION OF THE SOUTHEAST QUARTER OF THE NORTHEAST QUARTER OF SECTION 11, TOWNSHIP 12 NORTH, RANGE 20 EAST OF THE MOUNT DIABLO MERIDIAN, DOUGLAS COUNTY, NEVADA.

NOTES

- = Found monument as noted.
- ▲ = Set 5/8" rebar & Cap "PLS 8703"
CFR indicates "calculated from record"
CFM indicates "calculated from measured".

BASIS OF BEARINGS

The bearing of the easterly line of Parcel 1 of Parcel Map 275/331 and between the two 1/2 inch rebar monuments accepted for monuments for said line, being N0°29'04"E as noted on said parcel map was used as the BASIS OF BEARINGS for this map.