

15
22

15
23

14
23

15
23

15
23

15
23

15
23

15
23

15
23

15
23

15
23

15
23

15
23

15
23

15
23

15
23

15
23

15
23

15
23

15
23

15
23

15
23

15
23

15
23

15
23

15
23

15
23

15
23

15
23

15
23

15
23

15
23

15
23

15
23

15
23

15
23

15
23

15
23

15
23

15
23

15
23

15
23

15
23

15
23

15
23

15
23

BASIS OF BEARING

N 89°56'09" W
THE SOUTH LINE OF SECTION 15 T. 12 N., R. 19 E., M.D.M.
AS SHOWN ON THE RECORD OF SURVEY FOR LOIS S. JONES ESTATE
RECORDED AUGUST 20, 1985 AS DOCUMENT NO. 121842.

SURVEYOR'S CERTIFICATE

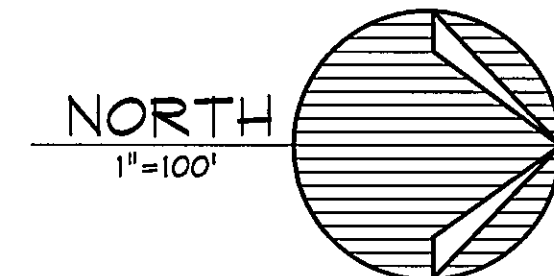
- 1, THOMAS I. McMANUS, A PROFESSIONAL LAND SURVEYOR REGISTERED IN THE STATE OF NEVADA CERTIFY THAT:
- 1) THIS PLAT REPRESENTS THE RESULTS OF A SURVEY CONDUCTED UNDER MY DIRECT SUPERVISION AT THE INSTANCE OF WILFRED L. JONES.
- 2) THE LANDS SURVEYED LIE WITHIN A PORTION OF SECTION 15, T.12N., R.19E., M.D.M. AND THE SURVEY WAS COMPLETED ON JULY 15, 1996.
- 3) THIS PLAT COMPLIES WITH THE APPLICABLE STATE STATUTES AND ANY LOCAL ORDINANCE IN EFFECT ON THE DATE THAT THE GOVERNING BODY GAVE ITS FINAL APPROVAL.
- 4) THE MONUMENTS DEPICTED ON THE PLAT ARE OF THE CHARACTER SHOWN, OCCUPY THE POSITIONS INDICATED AND ARE OF SUFFICIENT NUMBER AND DURABILITY.

Thomas I. McManus
THOMAS I. McMANUS
P.L.S. 6899
7-17-96

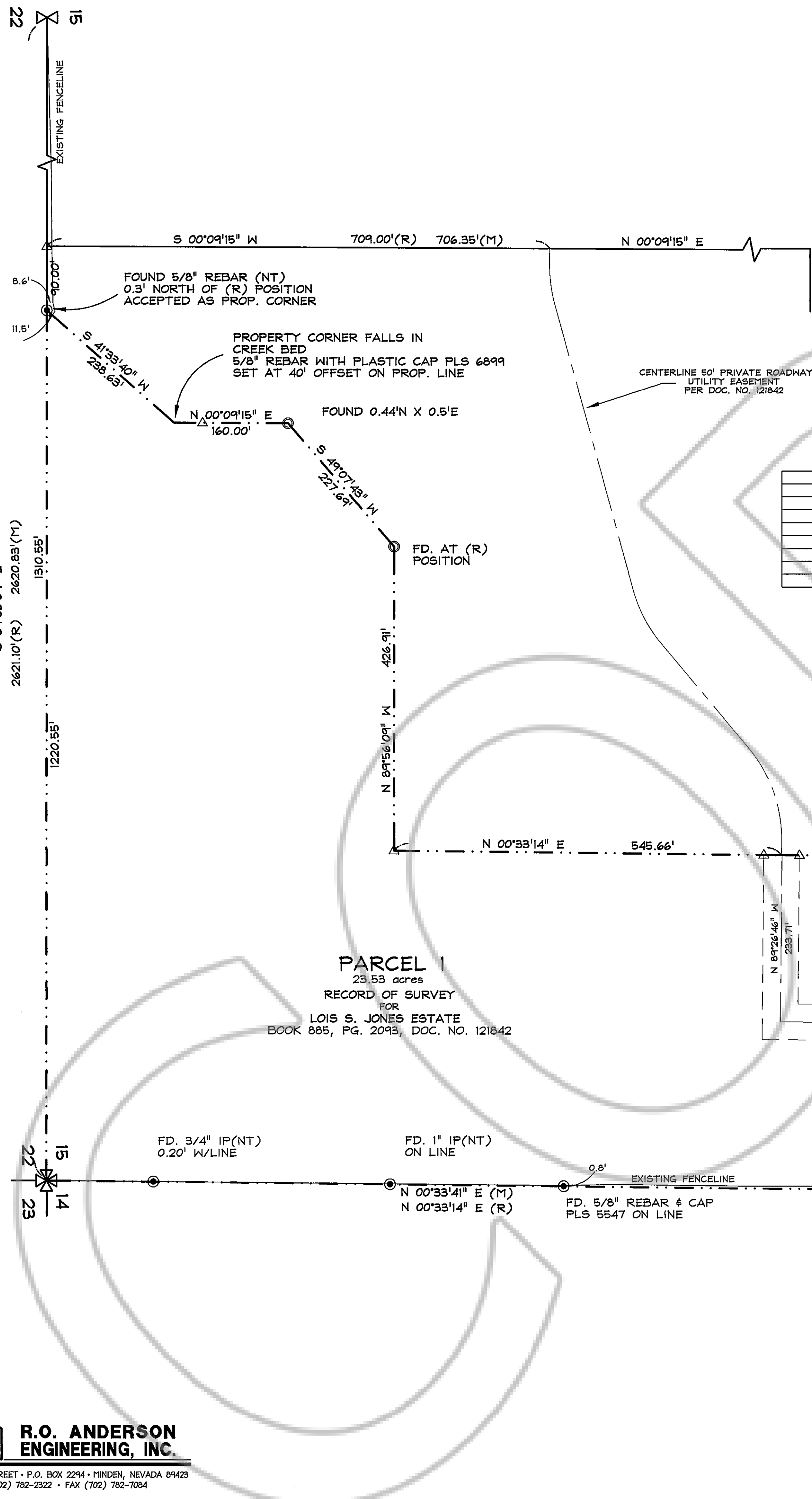
LEGEND

- △ SET 5/8" REBAR WITH PLASTIC CAP PLS 6899
- ▲ FOUND 5/8" REBAR WITH PLASTIC CAP PLS 1586
- FOUND 5/8" REBAR WITH PLASTIC CAP PLS 3622
- FOUND POINT AS NOTED
- ⊗ FOUND STANDARD U.S.G.L.O. BRASS CAP
- (R) RECORD BEARING OR DISTANCE PER DOC. NO. 121842

LINE	DIRECTION	DISTANCE
L1	S 66°56'01" E	65.14'
L2	N 28°43'47" E	21.13'
L3	N 73°32'33" E	52.07'
L4	N 16°25'29" E	83.52'
L5	N 59°14'01" E	70.63'
L6	N 65°01'00" E	89.02'
L7	N 32°56'03" E	69.50'
L8	N 04°43'18" E	55.65'



BASIS OF BEARING
S 89°56'09" E
2620.83'(M)
2621.10'(R)



PARCEL 1
23.53 acres
RECORD OF SURVEY
FOR
LOIS S. JONES ESTATE
BOOK 885, PG. 2093, DOC. NO. 121842

NOTE:
OFFSET CORNERS (5/8" REBAR W/ CAP 3922)
FOUND ON CREEK BANK PER DOC. NO. 121842
FOR LINES L-1 THRU L-8

RECORDER'S CERTIFICATE

FILED FOR RECORD THIS 19TH DAY OF SEPTEMBER, 1996, AT 49
MINUTES PAST 9 O'CLOCK A.M. IN BOOK 996 OF
OFFICIAL RECORDS, AT PAGE 2753; DOCUMENT NO. 396678
RECORDED AT THE REQUEST OF WILFRED L. JONES.

Gloria Burrell, Deputy
DOUGLAS COUNTY RECORDER

SCALE: 1" = 100' SHEET 1 OF 1

RECORD OF SURVEY
FOR
WILFRED L. JONES

LOCATED WITHIN A PORTION OF THE SE1/4
SECTION 15, T.12N., R.19E., M.D.M.

395-02-96 DOUGLAS COUNTY, NEVADA JULY, 1996

R.O. ANDERSON ENGINEERING, INC.
1624 10th STREET • P.O. BOX 2294 • HINDEN, NEVADA 89423
(702) 782-2322 • FAX (702) 782-7084

C:\NW68\3850285 Wed Sep 18 06:44:12 1996