

PARCEL KEY NOTES:
 UNIT 1 - PINEVIEW DEVELOPMENT PHASE 1
 AREA 'S' - SEWAGE DISPOSAL AREA/OPEN SPACE
 AREA 'P' - L.P.G. STORAGE SITE
 AREA 'T' - L.P.G. AND WATER TANK SITE
 AREA 'R' - FUTURE STREETS
 AREA 'SD/W' - JOINT STORM DRAIN AND WELL SITE
 SD EASEMENT - CROSS LOT STORM DRAIN EASEMENT
 PUE - PUBLIC UTILITY EASEMENT

- LEGEND**
- 32 33 FOUND SECTION CORNER AS NOTED.
 - 5 4 FOUND 1/4 CORNER AS NOTED
 - FOUND BLM BRASS CAP MONUMENT (AS NOTED)
 - FOUND NDOT MONUMENT (AS NOTED)
 - MONUMENT TO BE SET STAMPED P.L.S. 6304
 - ⊥ DIMENSION POINT NOTHING FOUND OR SET
 - ⊙ EXISTING WELL SITE



TOTAL SURVEY AREA = 62.74 acres

SURVEYOR'S CERTIFICATE

I, WAYNE KOCHER, A PROFESSIONAL LAND SURVEYOR REGISTERED IN THE STATE OF NEVADA, CERTIFY THAT:

- THIS IS A TRUE AND ACCURATE REPRESENTATION OF THE LANDS SURVEYED UNDER MY SUPERVISION AT THE INSTANCE OF PTP, INC.
- THE LANDS SURVEYED LIE WITHIN SECTION 5, TOWNSHIP 11 NORTH RANGE 21 EAST, M.D.M., AND THE SURVEY WAS COMPLETED ON OCTOBER 1, 1997.
- THIS RECORD OF SURVEY COMPLIES WITH THE APPLICABLE STATE STATUTES AND ANY LOCAL ORDINANCES.
- THE MONUMENTS DEPICTED ON THE RECORD OF SURVEY ARE OF THE CHARACTER SHOWN, OCCUPY THE POSITIONS INDICATED

Wayne Kocher, L.S. 6304
 DATE 10/6/97

BASIS OF BEARING

THE BASIS OF BEARING OF THIS RECORD OF SURVEY IS THE WESTERLY LINE OF THE NW 1/4 OF THE NW 1/4 OF SECTION 4 WHICH IS ALSO THE EASTERLY BOUNDARY LINE OF PARCEL A AND WHICH BEARS N 00°42'40" E AS SHOWN ON THE PLOT OF THE DEPENDENT RESURVEY AND SURVEY, TOWNSHIP 11 NORTH, RANGE 21 EAST, OF THE MOUNT DIABLO MERIDIAN, NEVADA ACCEPTED ON FEBRUARY 10, 1992 AND ON FILE IN THE OFFICE OF THE BUREAU OF LAND MANAGEMENT, RENO, NEVADA.

REFERENCE DOCUMENTS

- DEPENDENT RESURVEY AND SURVEY, TOWNSHIP 11 NORTH, RANGE 21 EAST, OF THE MOUNT DIABLO MERIDIAN, NEVADA ACCEPTED ON FEBRUARY 10, 1992 AND ON FILE IN THE OFFICE OF THE BUREAU OF LAND MANAGEMENT, RENO, NEVADA.
- RECORD OF SURVEY 5-11-21 AS RECORDED IN THE OFFICE OF THE COUNTY RECORDER, DOUGLAS COUNTY, NEVADA ON 3-4-93 AS DOC. NO. 301177.
- CONSTRUCTION DRAWINGS AND SURVEY MARKER INDEX RECORDS FOR HWY 395 PROJECT F-395-(1) DOUGLAS COUNTY, NEVADA ON FILE AT NEVADA DEPARTMENT OF HIGHWAYS, CARSON CITY, NEVADA.

CURVE	RADIUS	LENGTH	TANGENT	CHORD	DELTA
C1	100.00'	57.75'	29.71'	56.95'	33.0524°
C2	84.00'	7.03'	3.52'	7.02'	0°42'33"
C3	116.00'	66.89'	34.46'	66.07'	33°59'24"
C4	25.00'	52.39'	43.37'	43.32'	120°14'27"
C5	25.00'	40.05'	29.79'	35.90'	91°46'36"
C6	150.00'	82.91'	31.92'	82.45'	24°01'48"
C7	168.00'	69.62'	35.33'	69.11'	24°01'48"
C8	134.00'	56.20'	28.52'	55.79'	24°01'48"
C9	150.00'	82.91'	31.92'	82.45'	24°01'48"
C10	154.00'	56.20'	28.52'	55.79'	24°01'48"
C11	168.00'	69.62'	35.33'	69.11'	24°01'48"
C12	25.00'	22.21'	11.90'	21.48'	50°53'35"
C13	40.00'	83.35'	83.59'	74.38'	133°42'26"
C14	40.00'	83.35'	83.59'	69.88'	118°15'55"
C15	25.00'	22.21'	11.90'	21.48'	50°53'35"

LINE	DIRECTION	DISTANCE
L1	S 50°21'44" E	143.31'
L2	S 89°21'44" E	143.31'
L3	N 55°21'44" W	143.31'
L4	S 88°27'08" E	41.05'
L5	N 00°13'44" W	471.40'
L6	N 00°13'44" W	504.24'
L7	S 00°13'44" E	478.45'
L8	S 88°27'08" E	805.09'
L9	S 88°27'08" E	783.58'
L10	S 88°27'08" E	236.29'
L11	N 88°27'08" W	40.16'
L12	N 88°27'08" W	90.60'
L13	S 88°27'08" E	40.16'
L14	S 79°41'29" W	97.33'
L15	N 88°27'08" W	97.88'
L16	N 01°52'52" E	40.00'
L17	N 01°52'52" E	74.93'
L18	N 01°52'52" E	28.01'
L19	N 01°52'52" E	135.00'
L20	N 88°27'08" W	137.88'
L21	N 88°27'08" W	140.01'

NOTE

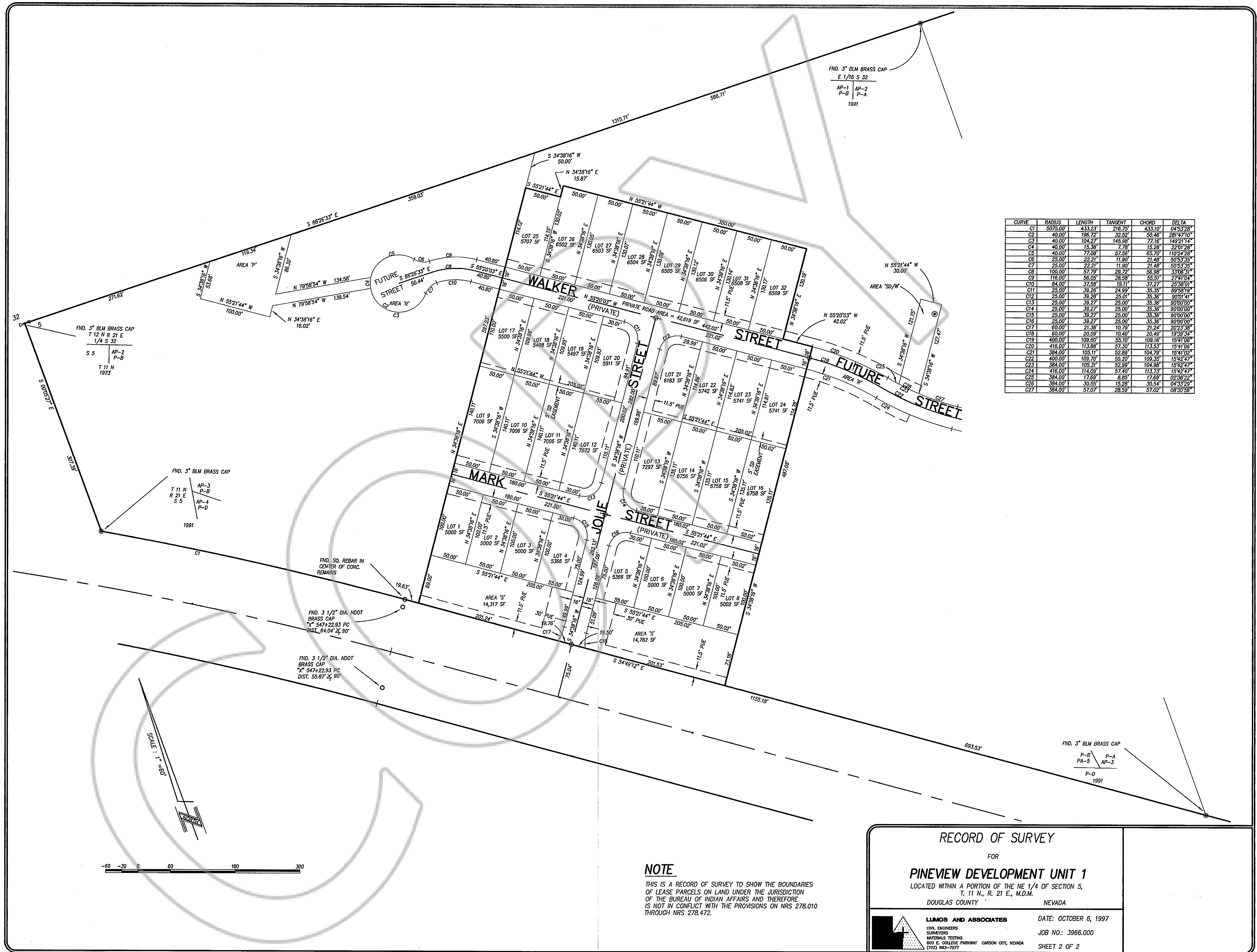
THIS IS A RECORD OF SURVEY TO SHOW THE BOUNDARIES OF LEASE PARCELS ON LAND UNDER THE JURISDICTION OF THE BUREAU OF INDIAN AFFAIRS AND THEREFORE IS NOT IN CONFLICT WITH THE PROVISIONS ON NRS 278.010 THROUGH NRS 278.472.

RECORD OF SURVEY
 FOR
PINEVIEW DEVELOPMENT UNIT 1
 LOCATED WITHIN A PORTION OF THE NE 1/4 OF SECTION 5, T. 11 N., R. 21 E., M.D.M.
 DOUGLAS COUNTY, NEVADA

FILED THIS 13th DAY OF October 1997 AT 18 MINUTES PAST 2 O'CLOCK P.M. IN BOOK 1097 OF OFFICIAL RECORDS AT PAGE 2348. DOCUMENT NUMBER 423881 RECORDED AT THE REQUEST OF: Lloyd Anderson

DATE: OCTOBER 6, 1997
 JOB NO.: 3966.000
 SHEET 1 OF 2

LUMOS AND ASSOCIATES
 CIVIL ENGINEERS
 SURVEYORS
 MATERIALS TESTING
 800 E. COLLEGE PARKWAY CARSON CITY, NEVADA
 (702) 883-7077



CURVE	RADIUS	LENGTH	TANGENT	CHORD	DELTA
C1	5075.00'	433.23'	216.75'	433.19'	04°53'28"
C2	40.00'	106.72'	32.52'	50.46'	28°14'10"
C3	40.00'	104.27'	145.98'	77.16'	149°21'14"
C4	40.00'	15.38'	7.78'	15.28'	22°01'28"
C5	40.00'	77.08'	57.56'	65.70'	110°24'28"
C6	25.00'	22.21'	11.80'	21.48'	50°53'55"
C7	25.00'	22.21'	11.80'	21.48'	50°53'55"
C8	100.00'	57.79'	28.72'	56.98'	33°06'51"
C9	116.00'	56.05'	28.58'	55.51'	27°41'04"
C10	84.00'	37.58'	19.11'	37.27'	25°38'01"
C11	25.00'	39.26'	24.99'	35.35'	89°58'19"
C12	25.00'	39.26'	25.01'	35.36'	90°01'41"
C13	25.00'	39.27'	25.00'	35.36'	90°00'00"
C14	25.00'	39.27'	25.00'	35.36'	90°00'00"
C15	25.00'	39.27'	25.00'	35.36'	90°00'00"
C16	25.00'	39.27'	25.00'	35.36'	90°00'00"
C17	60.00'	21.38'	10.79'	21.24'	20°23'38"
C18	50.00'	20.59'	10.40'	20.48'	19°39'34"
C19	400.00'	109.50'	55.10'	109.16'	15°41'06"
C20	416.00'	113.89'	57.30'	113.53'	15°41'06"
C21	384.00'	105.11'	52.89'	104.79'	15°41'02"
C22	400.00'	109.70'	55.20'	109.35'	15°42'47"
C23	384.00'	105.31'	52.89'	104.98'	15°42'47"
C24	416.00'	114.09'	57.40'	113.73'	15°42'47"
C25	384.00'	105.31'	52.89'	104.98'	15°42'47"
C26	384.00'	30.55'	15.28'	30.54'	04°33'29"
C27	384.00'	57.07'	28.59'	57.02'	08°30'56"

NOTE
 THIS IS A RECORD OF SURVEY TO SHOW THE BOUNDARIES OF LEASE PARCELS ON LAND UNDER THE JURISDICTION OF THE BUREAU OF INDIAN AFFAIRS AND THEREFORE IS NOT IN CONFLICT WITH THE PROVISIONS OF NRS 278.010 THROUGH NRS 278.472.

RECORD OF SURVEY
 FOR
PINEVIEW DEVELOPMENT UNIT 1
 LOCATED WITHIN A PORTION OF THE NE 1/4 OF SECTION 5,
 T. 11 N., R. 21 E., M.D.M.
 DOUGLAS COUNTY NEVADA

DATE: OCTOBER 6, 1997
 JOB NO.: 3966.000
 SHEET 2 OF 2

LUMOS AND ASSOCIATES
 CIVIL ENGINEERS
 SURVEYORS
 MATERIALS TESTING
 800 E. COLLEGE PARKWAY CARSON CITY, NEVADA
 (702) 865-7077