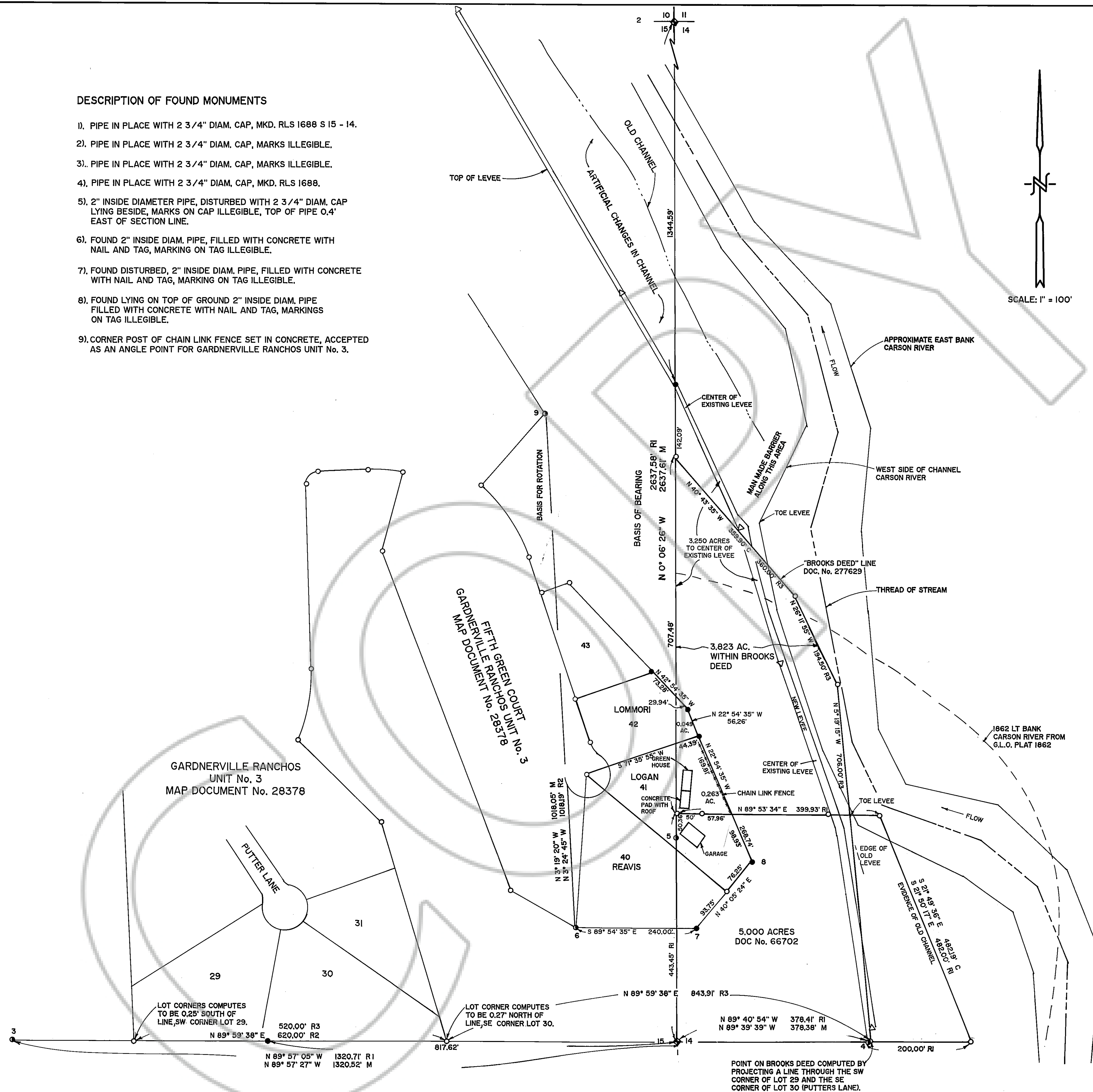


DESCRIPTION OF FOUND MONUMENTS

- 1). PIPE IN PLACE WITH 2 3/4" DIAM. CAP, MKD. RLS 1688 S 15 - 14.
- 2). PIPE IN PLACE WITH 2 3/4" DIAM. CAP, MARKS ILLEGIBLE.
- 3). PIPE IN PLACE WITH 2 3/4" DIAM. CAP, MARKS ILLEGIBLE.
- 4). PIPE IN PLACE WITH 2 3/4" DIAM. CAP, MKD. RLS 1688.
- 5). 2" INSIDE DIAMETER PIPE, DISTURBED WITH 2 3/4" DIAM. CAP LYING BESIDE, MARKS ON CAP ILLEGIBLE, TOP OF PIPE 0.4' EAST OF SECTION LINE.
- 6). FOUND 2" INSIDE DIAM. PIPE, FILLED WITH CONCRETE WITH NAIL AND TAG, MARKING ON TAG ILLEGIBLE.
- 7). FOUND DISTURBED, 2" INSIDE DIAM. PIPE, FILLED WITH CONCRETE WITH NAIL AND TAG, MARKING ON TAG ILLEGIBLE.
- 8). FOUND LYING ON TOP OF GROUND 2" INSIDE DIAM. PIPE FILLED WITH CONCRETE WITH NAIL AND TAG, MARKINGS ON TAG ILLEGIBLE.
- 9). CORNER POST OF CHAIN LINK FENCE SET IN CONCRETE, ACCEPTED AS AN ANGLE POINT FOR GARDNERVILLE RANCHOS UNIT No. 3.



SURVEYOR'S CERTIFICATE

- I, CHARLES F. CASSANO, A PROFESSIONAL LAND SURVEYOR REGISTERED IN THE STATE OF NEVADA CERTIFY THAT:
1. THIS PLAT REPRESENTS THE RESULTS OF A SURVEY CONDUCTED UNDER MY DIRECT SUPERVISION AT THE INSTANCE OF EVAN BEAVERS.
 2. THE LANDS SURVEYED LIE WITHIN SECS. 14 & 15, T. 12 N., R. 20 E., M.D.M. AND THE SURVEY WAS COMPLETED ON 10/06/97.
 3. THIS PLAT COMPLIES WITH THE APPLICABLE STATE STATUES AND ANY LOCAL ORDINANCES. IT IS NOT IN CONFLICT WITH N.R.S. 278.010 THRU ~~278.630~~ 278.630 INCLUSIVE.
 4. THE MONUMENTS DEPICTED ON THE PLAT ARE OF THE CHARACTER SHOWN, OCCUPY THE POSITIONS INDICATED AND ARE OF SUFFICIENT NUMBER AND DURABILITY TO ENABLE THIS SURVEY TO BE RETRACED.

12/29/97
 CHARLES F. CASSANO PLS 9607 DATE

SCALE: 1" = 100'

LEGEND

- ◆ FOUND SECTION CORNER OR 1/4 CORNER MONUMENT PER RECORD OF SURVEY, DOC. No. 66702.
- FOUND MONUMENT PER RECORD OF SURVEY, DOC. No. 66702, OR AS DESCRIBED.
- COMPUTED POINT.
- SET 5/8" REBAR W/CAP MKD. PLS 9607.
- RI RECORD MEASUREMENT PER DOC. No. 66702 (RECORD OF SURVEY FOR WASHOE TRIBE).
- R2 RECORD MEASUREMENT PER DOC. No. 28378 (SUBDIVISION MAP OF GARDNERVILLE RANCHOS UNIT No. 3).
- R3 RECORD MEASUREMENT PER DOC. No. 277629 ("BROOKS DEED").
- M MEASUREMENT - THIS SURVEY.
- C COMPUTED BEARING AND DISTANCE.
- △ SET CONTROL POINT - THIS SURVEY.

BASIS OF BEARING

N 0° 06' 26" W ALONG THE WEST LINE OF THE NW 1/4 SECTION 14, T. 12 N., R. 20 E., M.D.M. PER RECORD OF SURVEY, DOCUMENT No. 66702, DOUGLAS COUNTY RECORDS, MINDEN, NEVADA. BEARING ROTATION TO MAP OF GARDNERVILLE RANCHOS UNIT No. 3, DOC. No. 28378 AND "BROOKS DEED", DOC. No. 277629 IS 0° 05' 25" COUNTER CLOCKWISE. BEARINGS SHOWN FOR RECORD COURSES R2 AND R3 HAVE BEEN ROTATED TO CORRESPOND WITH THE BASIS OF BEARING FOR THIS SURVEY.

RECORDER'S CERTIFICATE

FILED FOR RECORD AT THE REQUEST OF Charles Cassano ON THIS 30 DAY OF DECEMBER 1997 AT 12 MINUTES PAST 2 O'CLOCK P.M. IN THE OFFICIAL RECORDS OF DOUGLAS COUNTY, NEVADA.

FEE \$17.00
 LINDA SLATER
 COUNTY RECORDER

FILE No. 429414 BY Betty Henderson Deputy
 Book 1297 Pg 5486
 DEPUTY

CERTIFICATE OF AMENDMENT
DOC# 469981 BK 0699 PG 2145

CHARLES F. CASSANO Professional Land Surveyor U. S. Mineral Surveyor	
RECORD OF SURVEY FOR WASHOE TRIBE OF NEVADA AND CALIFORNIA A PORTION OF SECTIONS 14 AND 15, T. 12 N., R. 20 E., M.D.M. DOUGLAS COUNTY, NEVADA	
DATE: OCTOBER 6, 1997 SCALE: 1" = 100' DRAWN BY: J. PROBST	SURVEYED BY: CHARLES F. CASSANO PLS 9607 P.O. BOX 864 YERINGTON, NEVADA 89447