

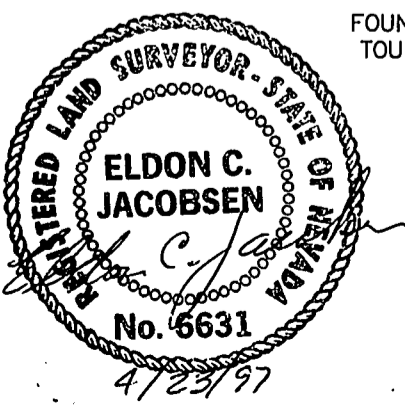
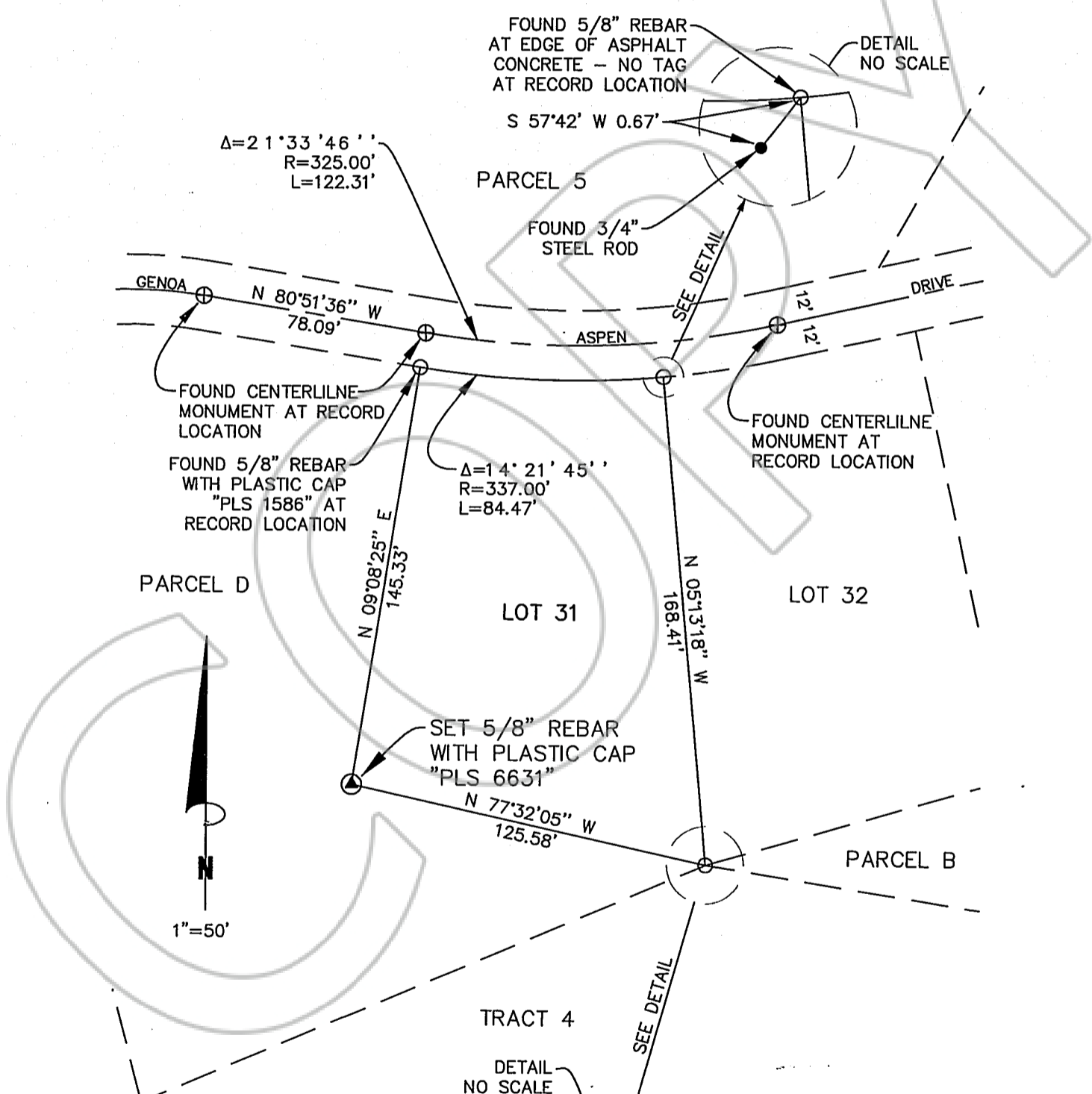
CORNER RECORD

Surveyor's Certificate

I, Eldon C. Jacobsen, a Professional Land Surveyor registered in the State of Nevada, certify that:

1. This corner record represents the establishment or restoration of a corner or accessory to a corner conducted under my direct supervision
2. The monument or accessories perpetuated lie in Section 3, Township 13 North, Range 19 East, Mt. Diablo Meridian, County of Douglas and the establishment or restoration was completed on April 22, 1998.
3. This corner record is recorded as required by NRS 329 and complies with the Nevada Administrative Code Standards of Practice for Professional Land Surveyors for Corner Records and any local ordinances in effect on the date that the establishment or restoration was completed.
4. The monument or witness monument and accessories found are of the character shown, occupy the position indicated and are of sufficient durability.

SET MONUMENT AT THE SOUTHWEST CORNER OF LOT 31
 GENOA LAKES - PHASE 1 - BLOCK 'G'



REQUESTED BY
 Consulting Services Assoc
 IN OFFICIAL RECORDS OF
 DOUGLAS CO., NEVADA

'98 APR 27 AM 11:34

LINDA SLATER
 RECORDER
 \$7.00 PAID *ke* DEPUTY

FOUND 5/8" REBAR WITH PLASTIC CAP "PLS 1586" AT RECORD LOCATION
 0438246

BK0498PG5032