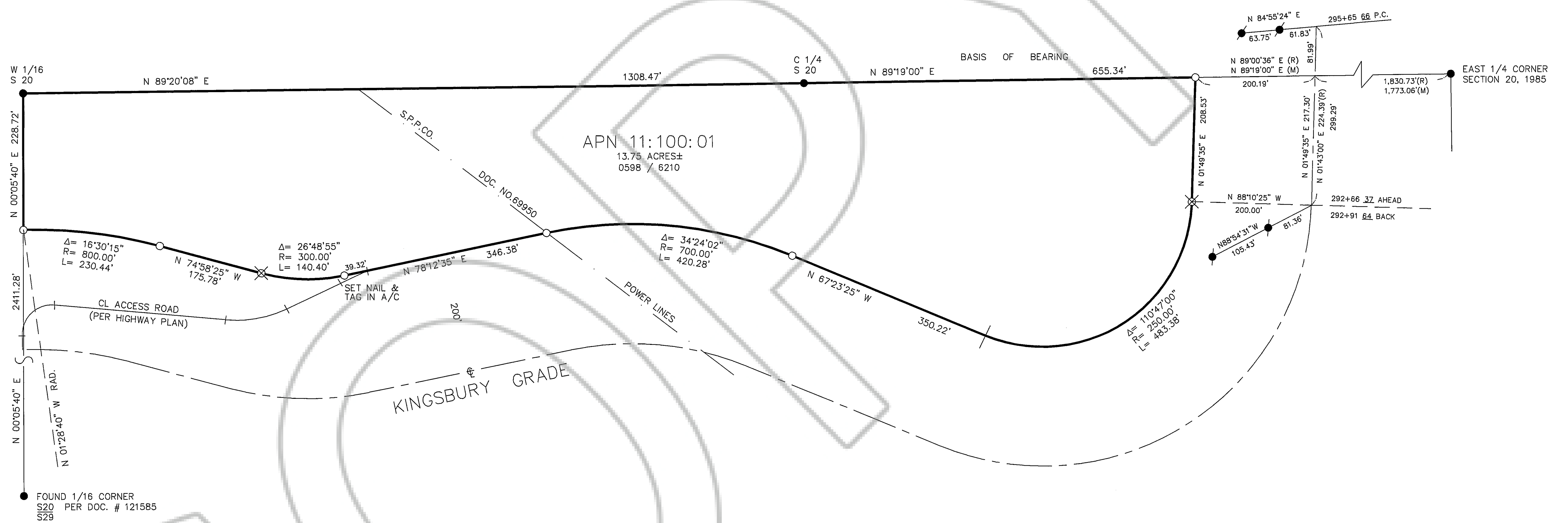




1" = 100'

U.S.F.S.

U.S.F.S.



### LEGEND

- FOUND B.L.M. BRASS CAP, 1994 OR AS NOTED
- FOUND BUREAU OF PUBLIC ROADS BRASS CAP
- SET 3/4" IRON PIPE W/PLUG PLS 3519 OR AS NOTED
- ⊗ "X" ON ROCK
- ┆ COMPUTED POINT NOTHING FOUND OR SET
- (R) BK. 85, PG. 18, DOC. NO. 51906
- (D) DEED
- (M) MEASURED

### BASIS OF BEARINGS

THE MERIDIAN FOR THIS SURVEY IS THE BEARING "N89°19'00\"/>

### SURVEYOR'S CERTIFICATE

I, RONALD W. TURNER, A PROFESSIONAL LAND SURVEYOR IN THE STATE OF NEVADA, CERTIFY THAT:  
 1. THIS IS A TRUE AND ACCURATE REPRESENTATION OF THE LANDS SURVEYED UNDER MY SUPERVISION AT THE INSTANCE OF AL MONTROSS  
 2. THE LANDS SURVEYED LIE WITHIN A PORTION OF THE SOUTH 1/2, SECTION 20, T.13N, R.19E, M.D.M., AND THE SURVEY WAS COMPLETED ON AUGUST 22, 1998.  
 3. THIS PLAT COMPLIES WITH THE APPLICABLE STATE STATUTES AND ANY LOCAL ORDINANCE, AND IS NOT IN CONFLICT WITH THE PROVISIONS OF NRS 278.010 TO 278.630, INCLUSIVE, AND SECTIONS 2 7 3 OF CHAPTER 479 OF THE SIXTY-SIXTH LEGISLATIVE SESSION.  
 4. THE MONUMENTS ARE OF THE CHARACTER SHOWN AND OCCUPY THE POSITIONS INDICATED.

*Ronald W. Turner*  
 RONALD W. TURNER, P.L.S. 3519

### COUNTY RECORDER'S CERTIFICATE

FILED FOR RECORD THIS 3 DAY OF December 1998, AT 56 MINUTES PAST 10 O'CLOCK A.M. IN BOOK 1298 PAGE 817, DOCUMENT NO. 455621 IN THE OFFICIAL RECORD OF WASHOE COUNTY, NEVADA AT THE REQUEST OF AL MONTROSS

*Annika Krommberg*, Deputy  
 DOUGLAS COUNTY RECORDER

SHEET 1 OF 1

### RECORD OF SURVEY

FOR AL MONTROSS  
 A PORTION OF THE SOUTH 1/2 OF SECTION 20, T.13 N., R.19 E., M.D.M., A.P.N. 11:100:01 DOUGLAS COUNTY

TURNER & ASSOC., INC.  
 STATELINE, NV.  
 (702) 588-5658

NOVEMBER 1998  
 SCALE 1"=100'  
 JOB #98069-ROS