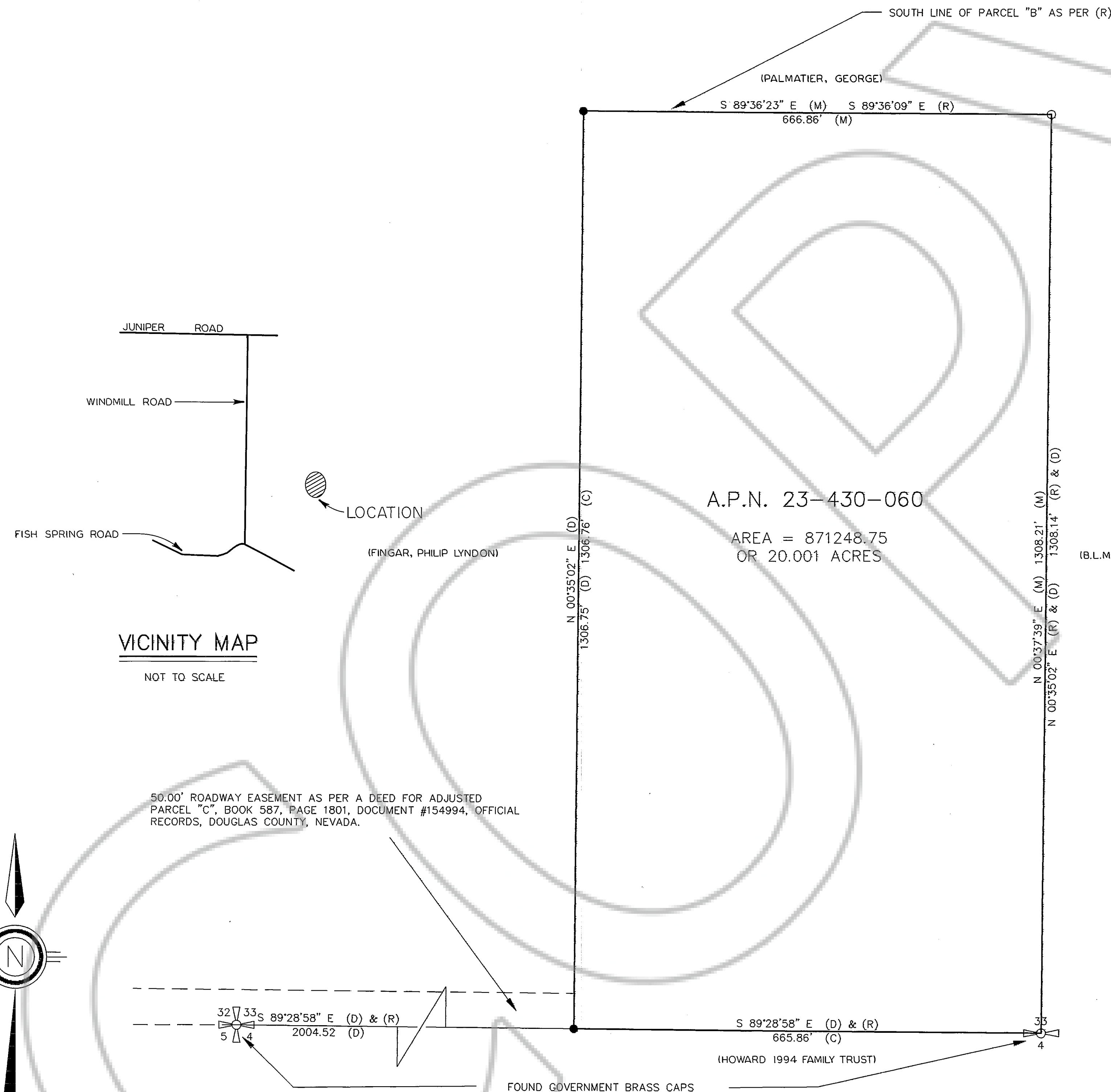


BASIS OF BEARINGS

THE BASIS OF BEARINGS IS THE SOUTH LINE OF THE SW1/4 OF SECTION 33, T. 13 N., R. 21 E., M.D.B. & M. SAID LINE BEARS S89°28'58"E. OFFICIAL RECORDS, DOUGLAS COUNTY, NEVADA.

LEGEND

- SET 5/8" REBAR WITH PLASTIC CAP STAMPED PLS 3090.
- FOUND 5/8" REBAR WITH TAG STAMPED RLS 1350.
- (R) MAP OF DIVISION INTO LARGE PARCELS, DOCUMENT #78498, OFFICIAL RECORDS, DOUGLAS COUNTY, NEVADA.
- (D) DEED, BOOK 587, PAGE 1802, DOCUMENT #154994, OFFICIAL RECORDS, DOUGLAS COUNTY, NEVADA.
- (C) CALCULATED.
- (M) MEASURED.

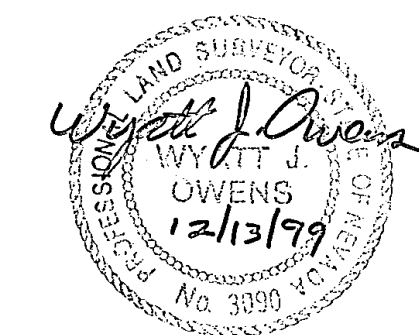


SURVEYOR'S CERTIFICATE

I, WYATT J. OWENS, A PROFESSIONAL LAND SURVEYOR REGISTERED IN THE STATE OF NEVADA, CERTIFY THAT:

- THIS PLAT REPRESENTS THE RESULTS OF A SURVEY CONDUCTED UNDER MY DIRECT SUPERVISION AT THE INSTANCE OF COLLEEN CAMPBELL.
- THE LANDS SURVEYED LIE WITHIN SECTION 33, TOWNSHIP 13 NORTH, RANGE 21 EAST, M.D.B.&M., AND THE SURVEY WAS COMPLETED ON DECEMBER 13, 1999.
- THIS PLAT COMPLIES WITH THE APPLICABLE STATE STATUTES AND ANY LOCAL ORDINANCES IN EFFECT ON THE DATE THAT THE GOVERNING BODY GAVE IT'S FINAL APPROVAL.
- THE MONUMENTS DEPICTED ON THIS PLAT ARE OF THE CHARACTER SHOWN, OCCUPY THE POSITIONS INDICATED AND ARE OF SUFFICIENT NUMBER AND DURABILITY.

DATE 12/13/99
 WYATT J. OWENS, PLS 3090



RECORDER'S CERTIFICATE

FILED FOR RECORD THIS 13th DAY OF December 1999, AT 5:4 MINUTES PAST 12 O'CLOCK P.M. IN BOOK 482 OF OFFICIAL RECORDS PAGE 444, DOCUMENT NUMBER 482444, RECORDED AT THE REQUEST OF WYATT J. OWENS.
 Camille Kionakors
 DOUGLAS COUNTY RECORDER

THIS IS A SURVEY OF ADJUSTED PARCEL "D", BOOK 587, PAGE 1802, DOCUMENT #154994, OFFICIAL RECORDS, DOUGLAS COUNTY, NEVADA.

RECORD OF SURVEY
 FOR
PHIL & RHONDA FINGAR
 WITHIN THE S1/2 OF THE SW1/4 OF SECTION 33,
 T. 13 N., R. 21 E., M.D.B. & M.
 DOUGLAS COUNTY, NEVADA