

APN: 1320-29-110-035

WHEN RECORDED MAIL TO:

Western Nevada Properties, Inc., a
Nevada corporation
2221 Meridian Blvd. # A
Minden, Nv. 89423

R.P.T.T. \$ #3

CORPORATION QUIT CLAIM DEED

WESTERN NEVADA PROPERTIES, INC., a Nevada corporation, in consideration of \$10.00, the receipt of which is hereby acknowledged, hereby quit claims, transfers, assigns and conveys to WINHAVEN HOMEOWNERS ASSOCIATION, a non-profit Nevada corporation, to its heirs and assigns forever, all that real property situated in the TOWN OF MINDEN, COUNTY OF DOUGLAS, STATE OF NEVADA, bounded and described as follows:

WINHAVEN, UNIT 8

Certain areas delineated as "common area" as set forth on sheet 3 on the map of Winhaven, Unit 8, a Planned Unit Development filed for record in the office of the County Recorder of Douglas County, State of Nevada, on September 11, 1997, as File No. 421412 of the Official Records, Book 997, commencing at Page 2125.

Assessment Parcel 1320-29-110-035 as delineated on the map attached hereto as Exhibit " A" and incorporated herein by reference.

subject to the Declaration of Covenants, Conditions and Reservations and Reservation of Easements of WINHAVEN, a subdivision of WINHAVEN, a Planned Unit Development, MINDEN, DOUGLAS COUNTY, NEVADA, on September 28, 1190, as Document No. 235644, Book 990, commencing at Page 4348, as amended, together with all and singular the tenements, hereditaments

0482656

BK1299PG2886

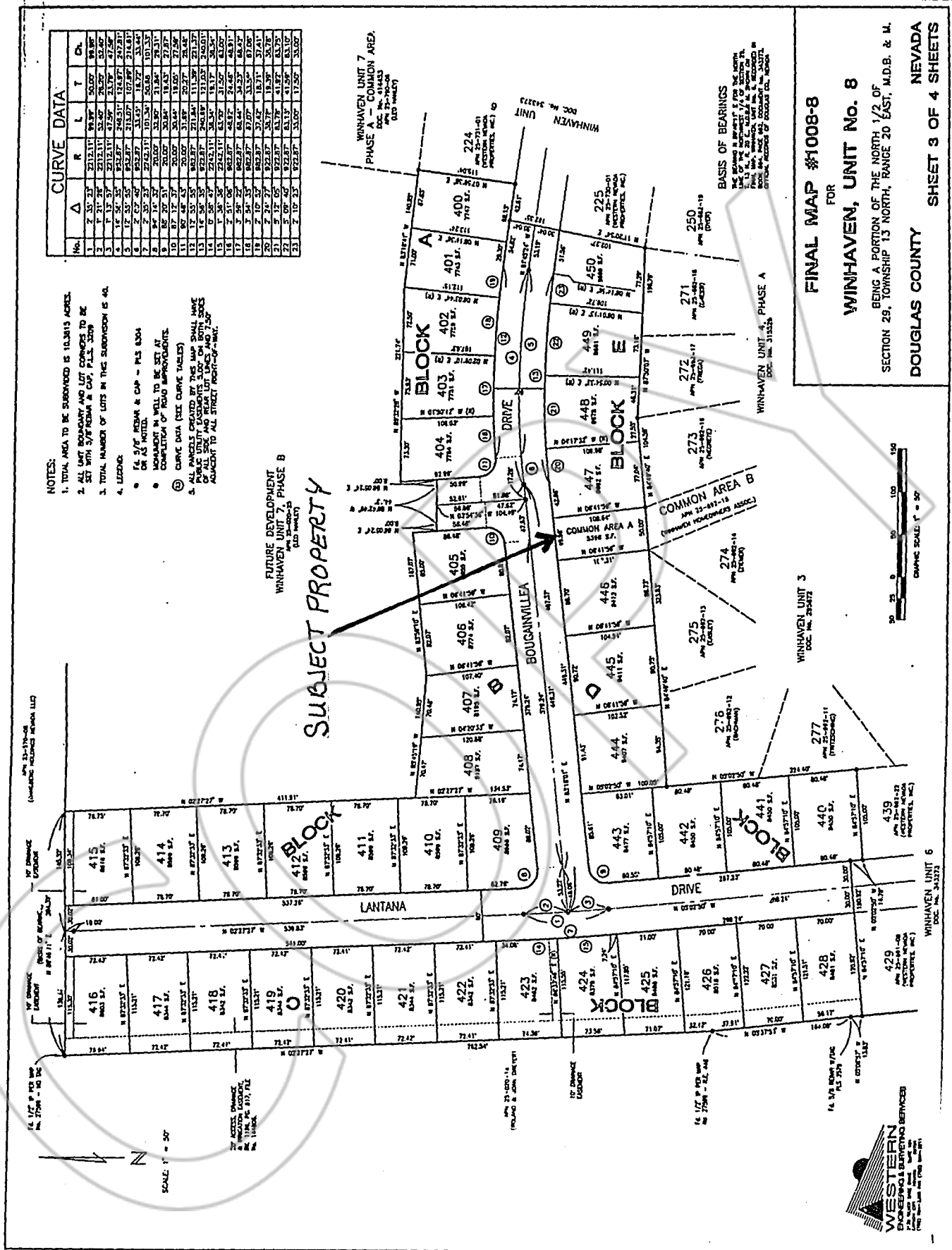
CURVE DATA

No.	Δ	R	L	T	Ch.
1	2° 30' 23"	213.11'	181.78'	50.00'	81.30'
2	1° 31' 24"	212.11'	52.46'	20.00'	83.80'
3	1° 31' 57"	212.11'	47.58'	23.00'	87.28'
4	1° 35' 35"	212.11'	47.58'	23.00'	87.28'
5	1° 35' 35"	212.11'	47.58'	23.00'	87.28'
6	1° 35' 35"	212.11'	47.58'	23.00'	87.28'
7	2° 30' 23"	213.11'	181.78'	50.00'	81.30'
8	8° 54' 51"	201.00'	30.84'	18.84'	29.31'
9	8° 54' 51"	201.00'	30.84'	18.84'	29.31'
10	8° 54' 51"	201.00'	30.84'	18.84'	29.31'
11	8° 54' 51"	201.00'	30.84'	18.84'	29.31'
12	8° 54' 51"	201.00'	30.84'	18.84'	29.31'
13	8° 54' 51"	201.00'	30.84'	18.84'	29.31'
14	8° 54' 51"	201.00'	30.84'	18.84'	29.31'
15	8° 54' 51"	201.00'	30.84'	18.84'	29.31'
16	8° 54' 51"	201.00'	30.84'	18.84'	29.31'
17	8° 54' 51"	201.00'	30.84'	18.84'	29.31'
18	8° 54' 51"	201.00'	30.84'	18.84'	29.31'
19	8° 54' 51"	201.00'	30.84'	18.84'	29.31'
20	8° 54' 51"	201.00'	30.84'	18.84'	29.31'
21	8° 54' 51"	201.00'	30.84'	18.84'	29.31'
22	8° 54' 51"	201.00'	30.84'	18.84'	29.31'
23	8° 54' 51"	201.00'	30.84'	18.84'	29.31'

- NOTES:**
- TOTAL AREA TO BE SUBDIVIDED IS 10.3815 ACRES.
 - ALL LOT BEARINGS AND LOT DIMENSIONS TO BE SET WITH SVP NORM IN CHPT. 20, NEV. STAT.
 - TOTAL NUMBER OF LOTS IN THIS SUBDIVISION IS 40.
 - LEGEND:
 - 5/8" SVP MARK & CAP - PLS EXHA
 - MONUMENT IN WELL TO BE SET AT COMPLETION OF ROAD IMPROVEMENTS.
 - ③ CURVE DATA (SEE CURVE TABLES)
 - ④ ALL PARCELS CREATED BY THIS MAP SHALL HAVE PUBLIC UTILITY EASEMENTS 30.00' ON BOTH SIDES ADJACENT TO ALL STREET FRONTAGE/FRONT.

FUTURE DEVELOPMENT
WINHAVEN UNIT 7, PHASE B
DOC. NO. 314433
(OLD MAP)

SUBJECT PROPERTY



FINAL MAP #1008-8
FOR
WINHAVEN, UNIT No. 8
BEING A PORTION OF THE NORTH 1/2 OF
SECTION 28, TOWNSHIP 13 NORTH, RANGE 20 EAST, M.D.B. & M.
DOUGLAS COUNTY NEVADA
SHEET 3 OF 4 SHEETS



0482656
BK 1299PG2888

REQUESTED BY
STEWART TITLE of DOUGLAS COUNTY
IN OFFICIAL RECORDS OF
DOUGLAS COUNTY, NEVADA

1999 DEC 16 AM 10: 04

LINDA SLATER
RECORDER

\$10⁰⁰ PAID K2 DEPUTY

0482656

BK 1299PG2889