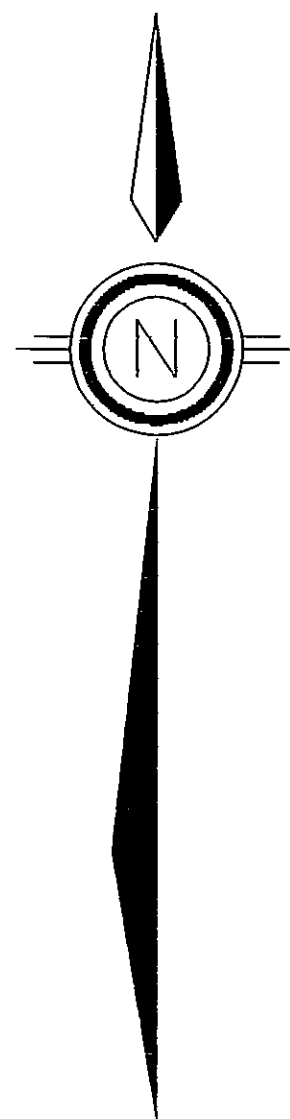


BASIS OF BEARINGS

THE BASIS OF BEARINGS OF THIS MAP IS THE NORTHERLY LINE OF PARCEL 1 OF A RECORD OF SURVEY TO SUPPORT A BOUNDARY LINE ADJUSTMENT FOR BROWN FAMILY TRUST, BEVERLY BROWN BUTLER, TRUSTEE, DOCUMENT #306946, OFFICIAL RECORDS, DOUGLAS COUNTY, NEVADA. SAID LINE BEARS S71°43'51"E.



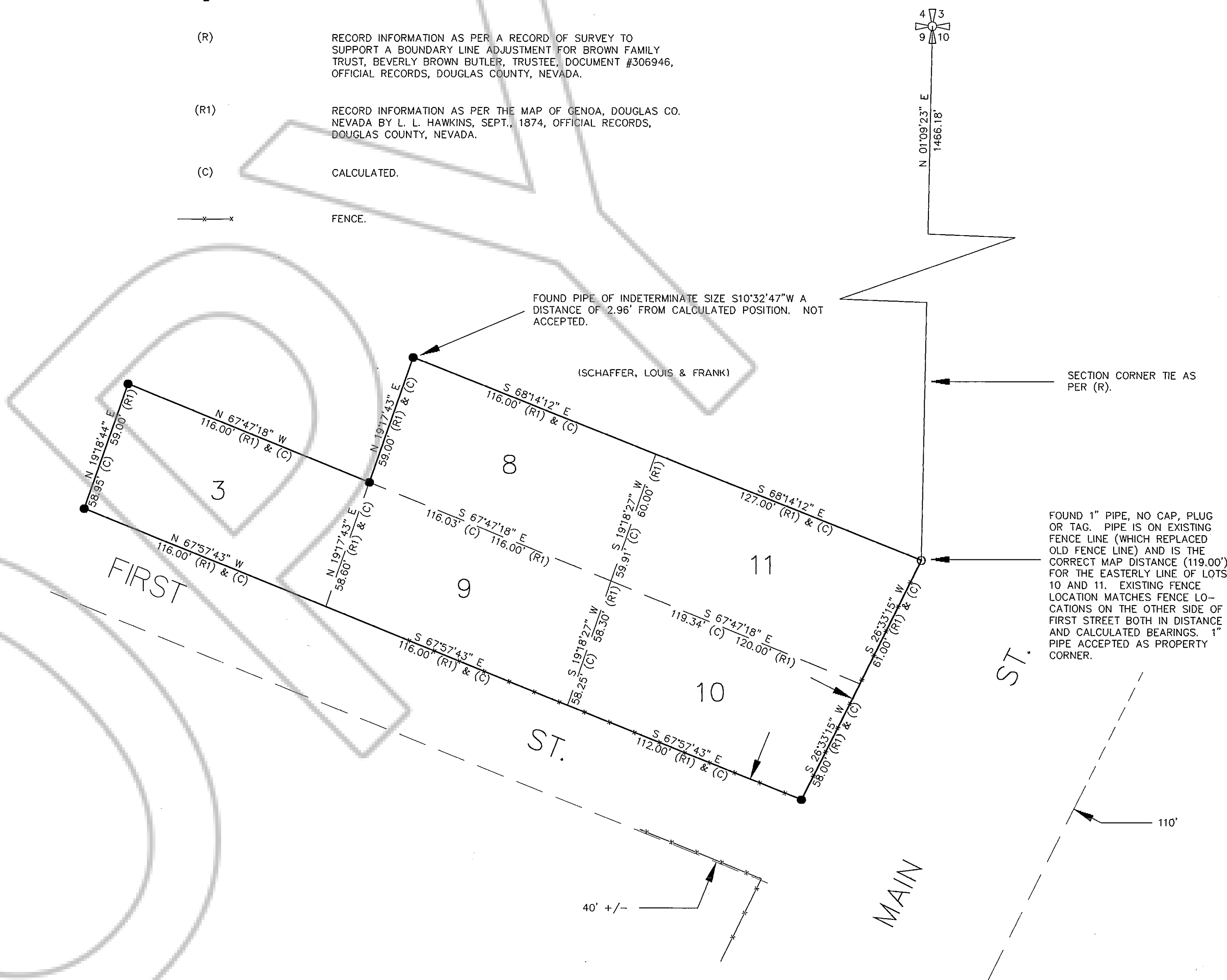
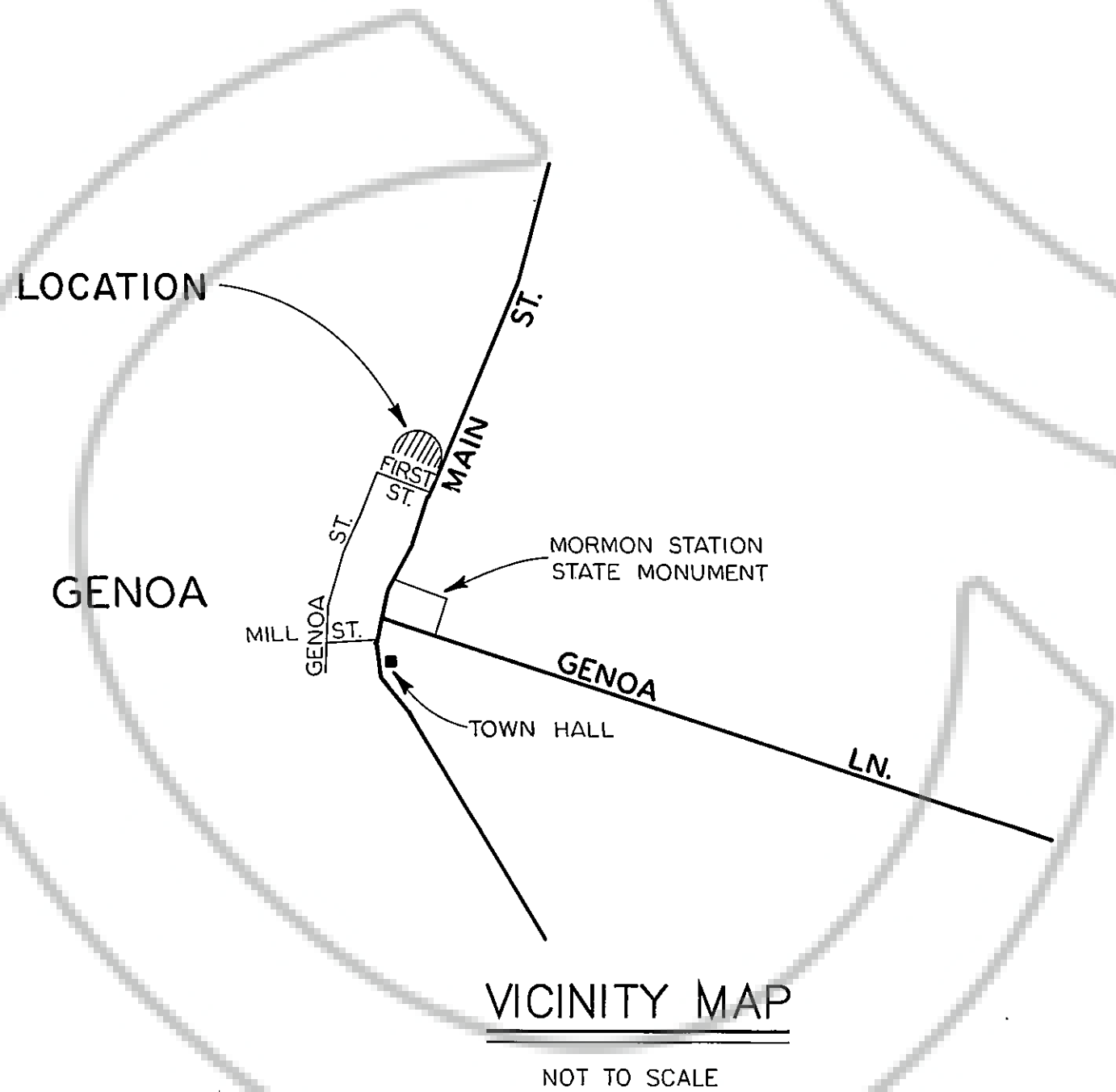
SCALE: 1" = 30'

NOTES

1. THE BEARINGS ON THIS MAP WERE CALCULATED USING (R) AS THERE ARE NO BEARINGS GIVEN ON (R1). SEE BASIS OF BEARINGS.
2. THE FENCE LOCATIONS SHOWN ON THIS MAP ARE IN AGREEMENT WITH THOSE SHOWN ON (R1).
3. TOTAL AREA SURVEYED = 34,608.69 SQUARE FEET OR 0.79 ACRES.
4. THIS IS A SURVEY OF A.P.N. 17-081-240.
5. THE LOT NUMBERS SHOWN ARE AS PER (R1).

LEGEND

- SET 5/8" REBAR WITH PLASTIC CAP STAMPED PLS 3090.
- (R) RECORD INFORMATION AS PER A RECORD OF SURVEY TO SUPPORT A BOUNDARY LINE ADJUSTMENT FOR BROWN FAMILY TRUST, BEVERLY BROWN BUTLER, TRUSTEE, DOCUMENT #306946, OFFICIAL RECORDS, DOUGLAS COUNTY, NEVADA.
- (R1) RECORD INFORMATION AS PER THE MAP OF GENOA, DOUGLAS CO. NEVADA BY L. L. HAWKINS, SEPT., 1874, OFFICIAL RECORDS, DOUGLAS COUNTY, NEVADA.
- (C) CALCULATED.
- FENCE.



SURVEYOR'S CERTIFICATE

I, WYATT J. OWENS, A PROFESSIONAL LAND SURVEYOR REGISTERED IN THE STATE OF NEVADA, CERTIFY THAT:

1. THIS PLAT REPRESENTS THE RESULTS OF A SURVEY CONDUCTED UNDER MY DIRECT SUPERVISION AT THE INSTANCE OF BROOKE WOELLNER
2. THE LANDS SURVEYED LIE WITHIN SECTION 9, TOWNSHIP 13 NORTH, RANGE 19 EAST, M.D.B.&M., AND THE SURVEY WAS COMPLETED ON MARCH 21, 2000.
3. THIS PLAT COMPLIES WITH THE APPLICABLE STATE STATUTES AND ANY LOCAL ORDINANCES IN EFFECT ON THE DATE THAT THE GOVERNING BODY GAVE ITS FINAL APPROVAL.
4. THE MONUMENTS DEPICTED ON THIS PLAT ARE OF THE CHARACTER SHOWN, OCCUPY THE POSITIONS INDICATED AND ARE OF SUFFICIENT NUMBER AND DURABILITY.

DATE 3/27/00 Wyatt J. Owens
WYATT J. OWENS, PLS 3090

RECORDER'S CERTIFICATE

FILED FOR RECORD THIS 29th DAY OF March 2000. AT 20 MINUTES PAST 11 O'CLOCK A.M. IN BOOK 9300 OF OFFICIAL RECORDS PAGE 5350. DOCUMENT NUMBER 488750 RECORDED AT THE REQUEST OF WYATT J. OWENS.

Kathy Lee Jordan - Deputy
DOUGLAS COUNTY RECORDER

SHEET 1 OF 1

RECORD OF SURVEY
FOR
BROOKE WOELLNER
WITHIN SECTION 9, T. 13 N., R. 19 E.,
M.D.B. & M.
DOUGLAS COUNTY, NEVADA

