

CORNER RECORD

SURVEYOR'S CERTIFICATE

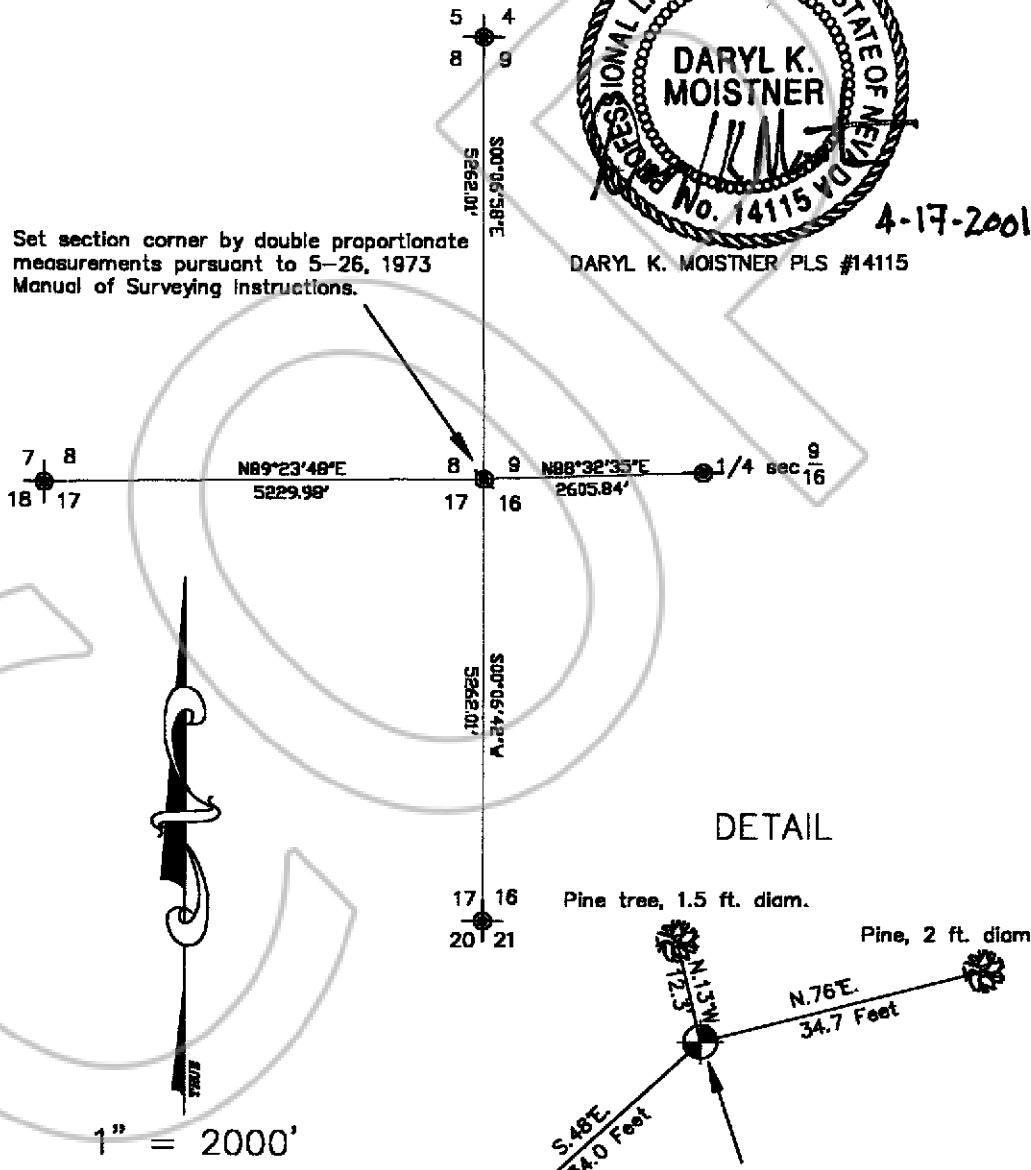
I, DARYL K. MOISTNER, A PROFESSIONAL LAND SURVEYOR, LICENSED IN THE STATE OF NEVADA, HEREBY STATE THAT:

1. THIS CORNER RECORD REPRESENTS THE ESTABLISHMENT OR RESTORATION OF A CORNER OR ACCESSORY TO A CORNER CONDUCTED UNDER MY DIRECT SUPERVISION:
2. THE MONUMENT OR ACCESSORIES PERPETUATED LIE WITHIN SECTIONS 8/9/16/17, T. 14 N., R. 19 E., M.D.M. & B. AND THE ESTABLISHMENT OR RESTORATION WAS COMPLETED ON OCTOBER 23, 2000
3. THIS CORNER RECORD HAS BEEN FILED PURSUANT TO NRS 329.140 OR 329.0150 AND COMPLIES WITH THE PROVISIONS OF NAC 329.010 AND ANY LOCAL ORDINANCES IN EFFECT ON THE DATE THAT THE ESTABLISHMENT OR RESTORATION WAS COMPLETED.
4. THE MONUMENT OR WITNESS MONUMENT AND ACCESSORIES FOUND ARE OF THE CHARACTER SHOWN, OCCUPY THE POSITIONS INDICATED, AND ARE OF SUFFICIENT DURABILITY.

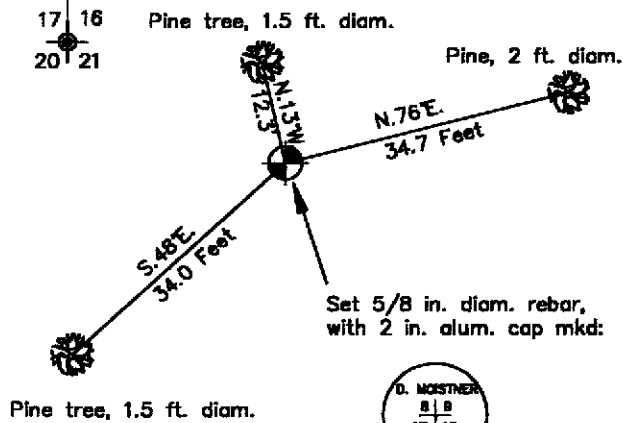


DARYL K. MOISTNER PLS #14115

Set section corner by double proportionate measurements pursuant to 5-26, 1973 Manual of Surveying Instructions.



DETAIL



REQUESTED BY
Thiel Eng
 IN OFFICIAL RECORDS OF
 DOUGLAS COUNTY, NEVADA
 2001 APR 17 PM 1:21

LINDA SLATER
 RECORDER

\$7.00 PAID *Q* DEPUTY

0512494
 BK0401PG4339