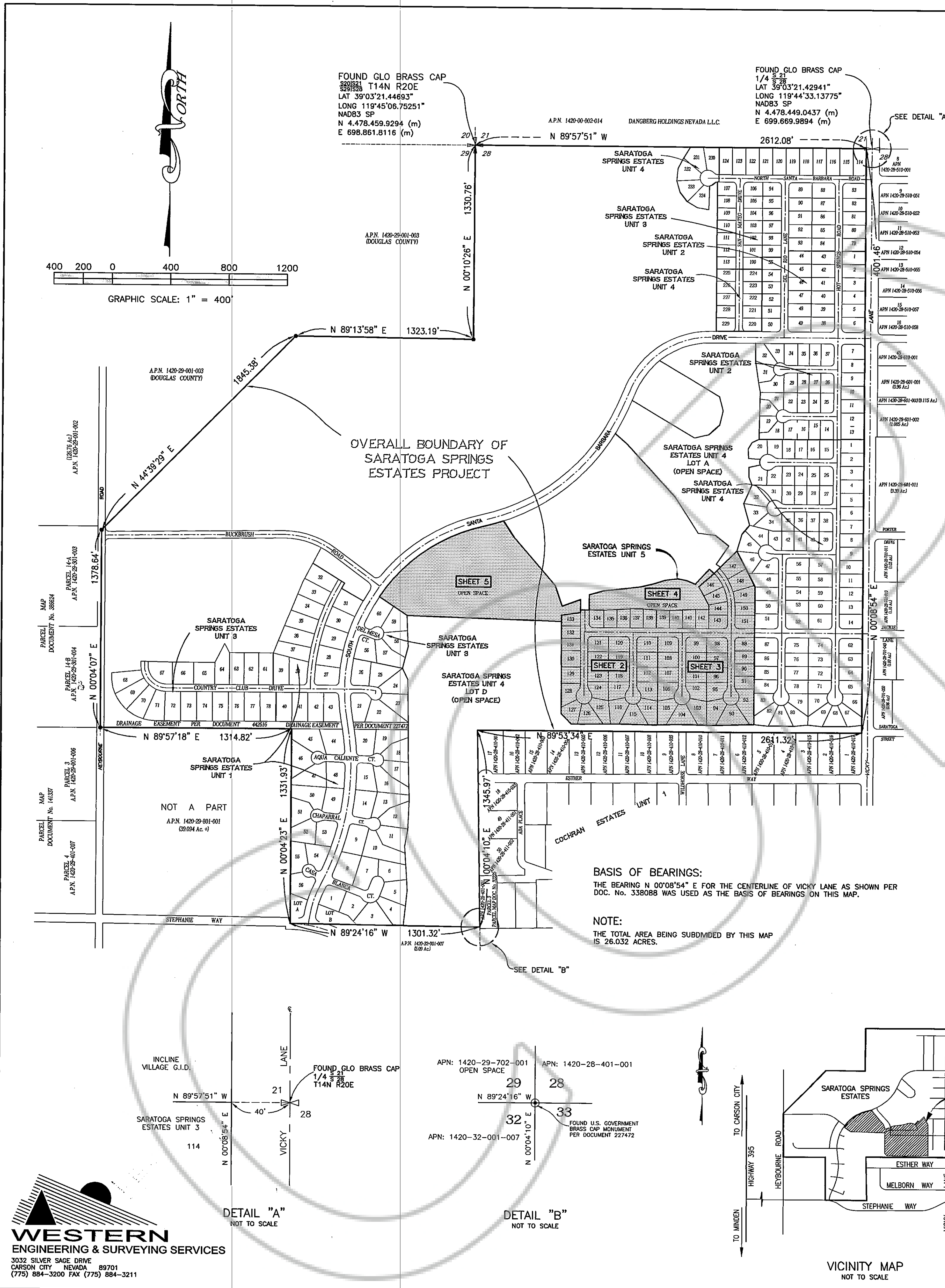


DRAWING NUMBER
Saratoga Springs Est.
Unit 5 1 of 5
PLAN HOLD CORPORATION • IRVINE, CALIFORNIA
RECORDED BY NUMBER 02049

DRAWING NUMBER
PLAN HOLD CORPORATION • IRVINE, CALIFORNIA
RECORDED BY NUMBER 02049

DRAWING NUMBER
PLAN HOLD CORPORATION • IRVINE, CALIFORNIA
RECORDED BY NUMBER 02049

DRAWING NUMBER
PLAN HOLD CORPORATION • IRVINE, CALIFORNIA
RECORDED BY NUMBER 02049



WESTERN
ENGINEERING & SURVEYING SERVICES
3032 SILVER SAGE DRIVE
CARSON CITY NEVADA 89701
(775) 884-3200 FAX (775) 884-3211

OWNER'S CERTIFICATE:

KNOW ALL MEN BY THESE PRESENT, THAT THE UNDERSIGNED, WILLIAM W. NICHOLS, A MEMBER OF DNS VENTURES, LTD., OWNER OF RECORD TITLE INTEREST, HEREBY CONSENT TO THE PREPARATION AND RECORDING OF THIS MAP IN ACCORDANCE WITH AND FOR THE USES AND PURPOSES SET FORTH IN THE NEVADA REVISED STATUTES, CHAPTERS 118 AND 278, AND SUBSEQUENT AMENDMENTS THERETO, AND DOUGLAS COUNTY CODE CHAPTER 20, AND DOES HEREBY OFFER AND CONVEY FOR DEDICATION TO THE COUNTY OF DOUGLAS, STATE OF NEVADA, FOR THE USE OF THE PUBLIC THOSE PORTIONS OF SAID LANDS DESIGNATED ON THIS MAP AS PUBLIC WAYS AND RIGHTS-OF-WAYS AND DOES HEREBY OFFER AND DEDICATE FOR PARTICULAR PURPOSES THE RIGHTS OF WAY AND EASEMENTS SHOWN FOR PRIVATE ACCESS, NATURAL GAS, WATER, SEWER, PRIVATE STORM DRAINAGE, DRAINAGE FACILITIES, AND DRAINAGE PIPES, CONDUIT FOR ELECTRICAL, CABLE TV, AND TELEPHONE SERVICE TOGETHER WITH ANY AND ALL APPURTENANCES THERETO, ON, ACROSS, AND UNDER ALL LAND LYING WITHIN INDIVIDUAL SITES SHOWN HEREON.

DNS VENTURES, LTD. APN 1420-28-301-001 (PORTION)
BY: WILLIAM W. NICHOLS DATE 4/20/01
MEMBER

NOTARY CERTIFICATE:

STATE OF NEVADA } S.S.
DOUGLAS COUNTY }
ON THIS 20th DAY OF April, 2001, PERSONALLY APPEARED BEFORE ME, A NOTARY PUBLIC IN AND FOR SAID COUNTY AND STATE, DNS VENTURES, LTD., WILLIAM W. NICHOLS, MEMBER, WHO ACKNOWLEDGED THAT HE EXECUTED THE ABOVE INSTRUMENT.
MY COMMISSION EXPIRES ON 4-29-01
L. HENDRICK 83-2710-9
NOTARY PUBLIC - NEVADA
DOUGLAS COUNTY
My Appointment Expires on 4-29-2001

SARATOGA SPRINGS HOMEOWNERS ASSOCIATION

BY: TERRY CUPP DATE 4/20/01

NOTARY CERTIFICATE:

STATE OF NEVADA } S.S.
DOUGLAS COUNTY }
ON THIS 20th DAY OF April, 2001, PERSONALLY APPEARED BEFORE ME, A NOTARY PUBLIC IN AND FOR SAID COUNTY AND STATE, SARATOGA SPRINGS HOMEOWNERS ASSOCIATION, TERRY CUPP, PRESIDENT, WHO ACKNOWLEDGED THAT HE EXECUTED THE ABOVE INSTRUMENT.
MY COMMISSION EXPIRES ON 11-04-02
SANDRA L. WINCHELL
Notary Public - State of Nevada
My Appointment Expires Nov. 4, 2002

COUNTY CLERK'S CERTIFICATE:

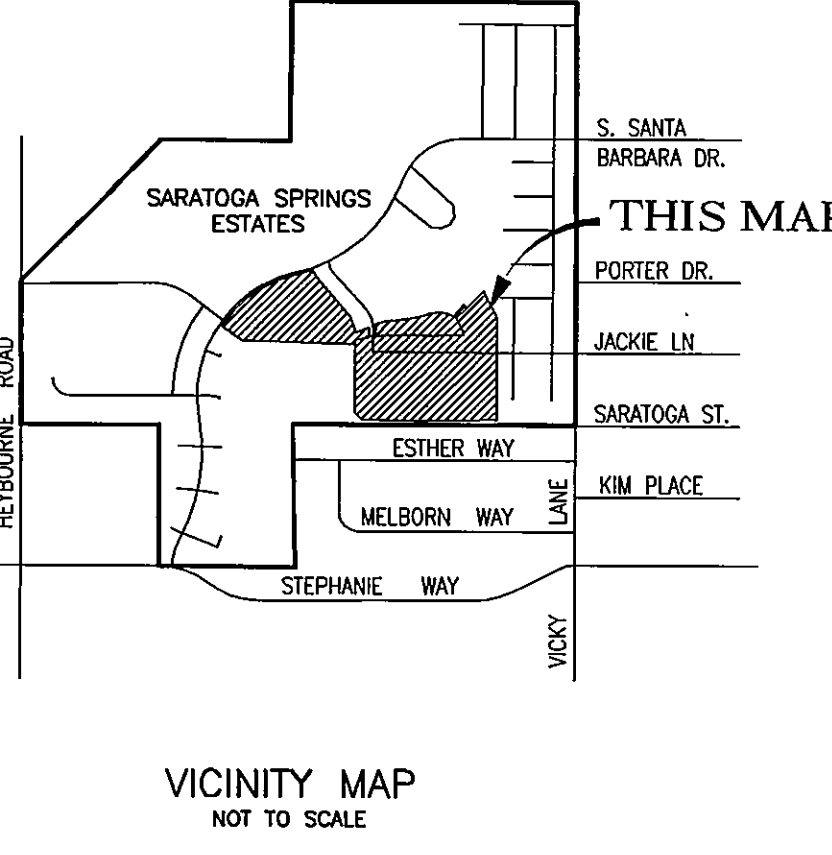
IT IS HEREBY CERTIFIED THAT THIS PLAN WAS PRESENTED TO THE DEPARTMENT OF COMMUNITY DEVELOPMENT ON MAY 3, 2001, AND WAS DULY APPROVED. IN ADDITION ALL OFFERS OF DEDICATION FOR ALL PUBLIC ROADWAYS AND OTHER PUBLIC USES WERE REJECTED WITH THE RESERVATION TO ACCEPT SAID OFFERS AT A LATER DATE.

BY: BARBARA J. REED DATE 5-3-01
BARBARA J. REED, COUNTY CLERK/TREASURER

UTILITY COMPANY APPROVALS:

THE EASEMENTS SHOWN ON THIS PLAN HAVE BEEN CHECKED AND APPROVED BY THE UNDERSIGNED. THIS APPROVAL DOES NOT GUARANTEE ACCESSIBILITY FOR SERVICE.
BY: CHARLES MILLER DATE 4/20/01
SIERRA PACIFIC POWER COMPANY
BY: LARRY GIBSON DATE 4/20/01
SOUTHWEST GAS CORPORATION
BY: DEBBIE PAYNE DATE 4-20-01
VERIZON
TITLE COMPANY CERTIFICATE:
THE UNDERSIGNED HEREBY CERTIFIES THAT THIS PLAN HAS BEEN EXAMINED, THAT ANY LIEN OF MORTGAGE HOLDERS ARE LISTED AND THAT OWNERS OFFERING SAID MAP ARE THE RECORD TITLE HOLDER OF THE LANDS SHOWN HEREON. THERE ARE NO LIENS OF RECORD.
BY: JAMES D. ROSE, III S.P. DATE 02-06-01
STEWART TITLE COMPANY

CERTIFICATE OF AMENDMENT
DOC# 518483 BK 701 PG 3937



SURVEYOR'S CERTIFICATE:

I, DAVID D. WINCHELL, A PROFESSIONAL LAND SURVEYOR LICENSED IN THE STATE OF NEVADA, CERTIFY THAT:
1. THIS IS A TRUE AND ACCURATE REPRESENTATION OF THE LAND SURVEYED UNDER MY SUPERVISION AT THE INSTANCE OF DNS VENTURES, LTD., WILLIAM W. NICHOLS, MEMBER.
2. THE LANDS SURVEYED LIE WITHIN THE W. 1/2 OF SECTION 28, AND THE EAST 1/2 OF SECTION 29 OF TOWNSHIP 14 NORTH, RANGE 20 EAST, M.D.B.&M. AND THE SURVEY WAS COMPLETED ON MARCH 6, 2001.
3. THIS PLAN COMPLIES WITH THE APPLICABLE STATE STATUTES AND ANY LOCAL ORDINANCES.
4. THE MONUMENTS DEPICTED ON THE PLAN WILL BE OF THE CHARACTER SHOWN AND OCCUPY THE POSITIONS INDICATED BY MARCH 6, 2002, AND THAT AN APPROPRIATE PERFORMANCE BOND OR GUARANTEE HAS BEEN POSTED WITH THE GOVERNING BODY TO ASSURE THEIR INSTALLATION.

DAVID D. WINCHELL
PROFESSIONAL LAND SURVEYOR
No. 3209
P.L.S. 3209
DATE 4/20/2001

FIRE DEPARTMENT'S APPROVAL:

THE FIREFIGHTING FACILITIES AND ACCESSES SHOWN ON THESE PLANS ARE HEREBY APPROVED BY THE EAST FORK FIRE PROTECTION DISTRICT.
BY: TERRY CUPP DATE 4/20/2001
EAST FORK FIRE PROTECTION DISTRICT

HEALTH DIVISION CERTIFICATE:

THIS FINAL MAP IS APPROVED BY THE HEALTH DIVISION OF THE DEPARTMENT OF HUMAN RESOURCES THIS APPROVAL CONCERNS SEWAGE DISPOSAL, WATER POLLUTION, WATER QUALITY AND WATER SUPPLY FACILITIES AND IS PRICED UPON PLANS FOR A PUBLIC WATER SUPPLY AND A COMMUNITY SYSTEM FOR DISPOSAL OF SEWAGE.
BY: RICHARD P. DEW DATE 4/20/01
HEALTH DIVISION

COUNTY ENGINEER'S CERTIFICATE:

I, ERIC M. TETELMAN, P.E., COUNTY ENGINEER, DO HEREBY CERTIFY THAT I HAVE EXAMINED THIS MAP ENTITLED "SARATOGA SPRINGS ESTATES UNIT 5" AND THAT ALL PROVISIONS AND ORDINANCES APPLICABLE HAVE BEEN COMPLIED WITH, AND I AM SATISFIED THAT THIS MAP IS TECHNICALLY CORRECT. APPROPRIATE FINANCIAL SECURITY HAS BEEN POSTED FOR THE IMPROVEMENTS AND SETTING OF THE SURVEY MONUMENTS.
BY: ERIC M. TETELMAN, P.E. DATE 5/3/01
DOUGLAS COUNTY ENGINEER

TAX COLLECTOR'S CERTIFICATE:

I, BARBARA J. REED, DOUGLAS COUNTY CLERK/TREASURER AND EX-OFFICIO TAX COLLECTOR, DO HEREBY CERTIFY THAT ALL PROPERTY TAXES ON THIS LAND FOR THE FISCAL YEAR HAVE BEEN PAID.
NO AG TAXES AS OF 5/1/01
APN 1420-28-301-001 (PORTION)

BY: BARBARA J. REED DATE 5/4/01
BARBARA J. REED, COUNTY CLERK/TREASURER

DIVISION OF WATER RESOURCES CERTIFICATE:

THIS FINAL MAP IS APPROVED BY THE DIVISION OF WATER RESOURCES OF THE STATE OF NEVADA DEPARTMENT OF CONSERVATION AND NATURAL RESOURCES CONCERNING WATER QUANTITY SUBJECT TO THE REVIEW OF APPROVAL ON FILE IN THIS OFFICE.
BY: JASON KING DATE 4-25-01
DIVISION OF WATER RESOURCES

COMMUNITY DEVELOPMENT CERTIFICATE:

IT IS HEREBY CERTIFIED THAT THIS PLAN WAS REVIEWED AND APPROVED BY THE DOUGLAS COUNTY DEPARTMENT OF COMMUNITY DEVELOPMENT ON THE 3rd DAY OF May, 2001. THIS PLAN IS IN SUBSTANTIAL CONFORMANCE WITH THE TENTATIVE MAP AND ALL CONDITIONS OF APPROVAL HAVE BEEN SATISFIED. IN ADDITION ALL OFFERS OF DEDICATION FOR ALL PUBLIC ROADWAYS AND OTHER PUBLIC USES WERE REJECTED WITH THE RESERVATION TO ACCEPT SAID OFFERS AT A LATER DATE.
BY: MIMI MOSS DATE 5-3-01
PLANNING/ECONOMIC DEVELOPMENT MANAGER

COUNTY RECORDER'S CERTIFICATE:

FILED FOR RECORD THIS 4th DAY OF May, 2001, AT 4:11 O'CLOCK P.M., IN BOOK 0501 PAGE 1402 OF THE OFFICIAL RECORDS OF DOUGLAS COUNTY AT THE REQUEST OF WILLIAM W. NICHOLS, A MEMBER, OF DNS VENTURES, LTD.
RECORDING FEE: \$82.00 Doc# 513570

BY: DAVID D. WINCHELL DATE 5/4/01
DOUGLAS COUNTY RECORDER

FINAL MAP # PD99-02-05
FOR
SARATOGA SPRINGS ESTATES
UNIT 5
A PLANNED DEVELOPMENT.
BEING A PORTION OF THE WEST 1/2 OF SECTION 28, AND THE EAST 1/2 OF SECTION 29, TOWNSHIP 14 NORTH, RANGE 20 EAST, M.D.B.&M.
DOUGLAS COUNTY NEVADA
SHEET 1 OF 5 SHEETS

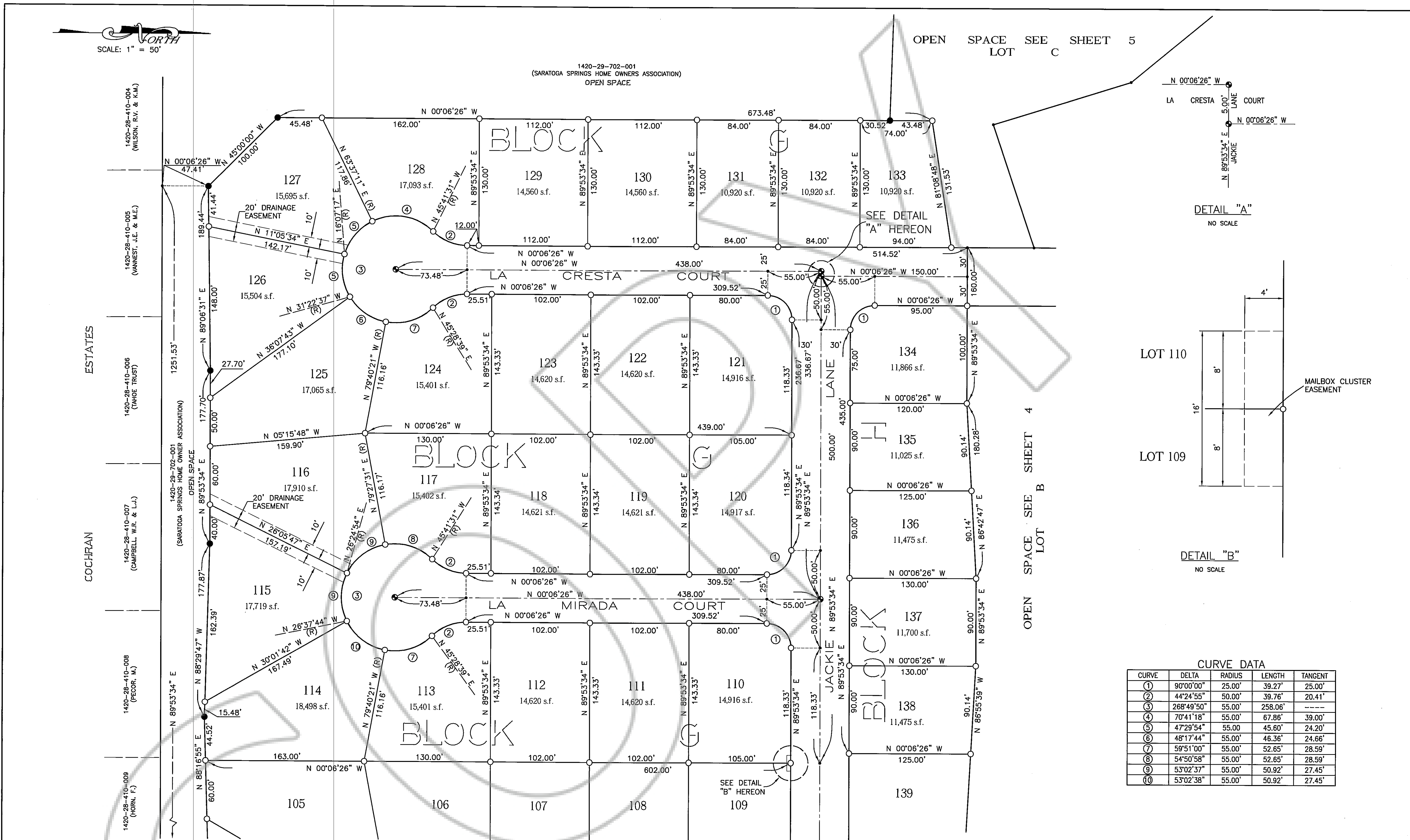
DOCUMENT #513570

DRAWING NUMBER
Saratoga Springs Est
Unit 5 2 of 5
PLAN HOLD CORPORATION • IRVINE, CALIFORNIA
RECORDED BY NUMBER 0204

DRAWING NUMBER
PLAN HOLD CORPORATION • IRVINE, CALIFORNIA
RECORDED BY NUMBER 0204

DRAWING NUMBER
PLAN HOLD CORPORATION • IRVINE, CALIFORNIA
RECORDED BY NUMBER 0204

DRAWING NUMBER
PLAN HOLD CORPORATION • IRVINE, CALIFORNIA
RECORDED BY NUMBER 0204



FINAL MAP # PD99-02-05
FOR
SARATOGA SPRINGS ESTATES
UNIT 5
A PLANNED DEVELOPMENT
BEING A PORTION OF THE WEST 1/2 OF SECTION 28, AND THE
EAST 1/2 OF SECTION 29, TOWNSHIP 14 NORTH, RANGE 20 EAST,
M.D.B.&M.
DOUGLAS COUNTY NEVADA
SHEET 2 OF 5 SHEETS

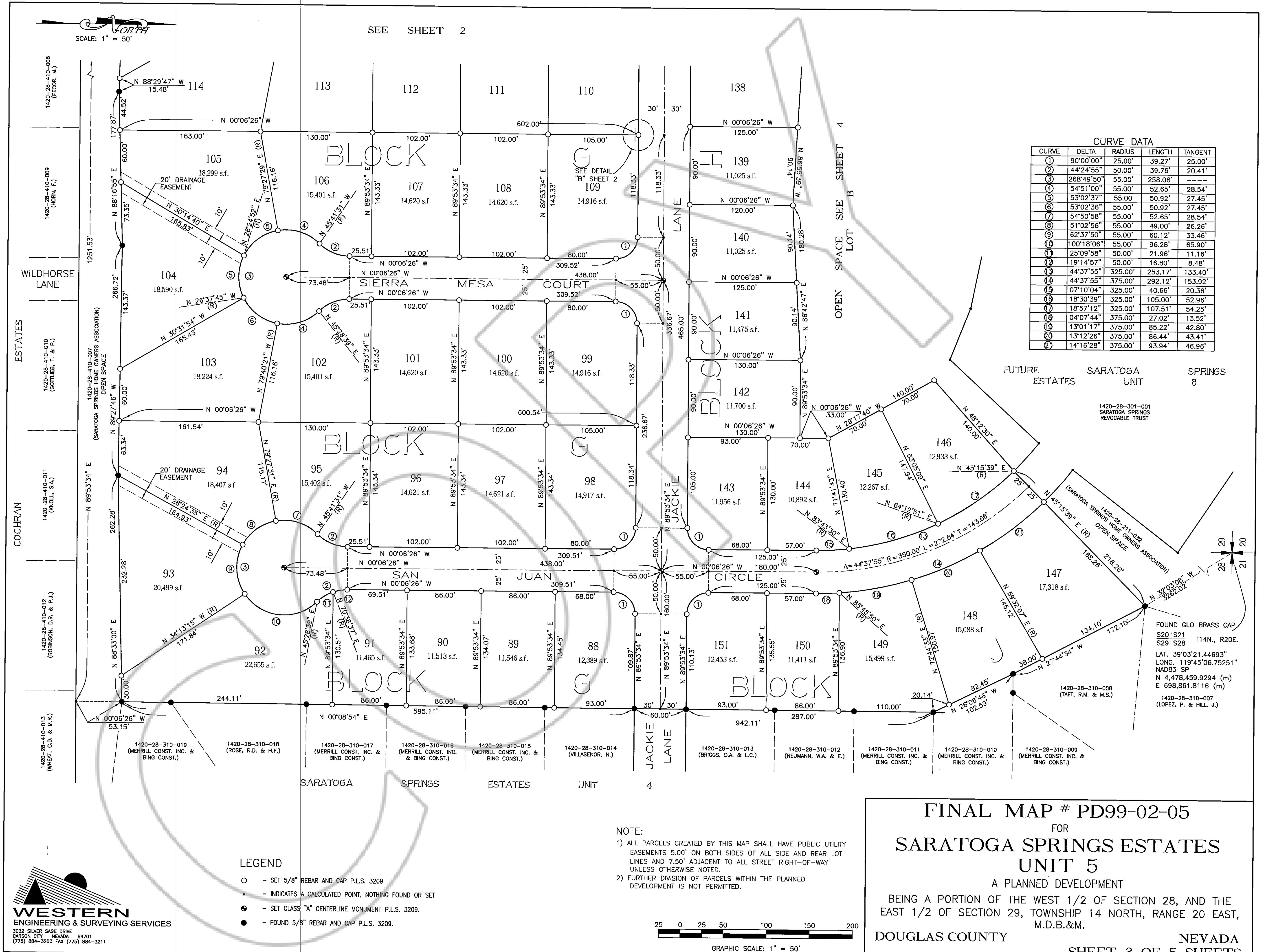
DOCUMENT #513570

DRAWING NUMBER
Saratoga Springs Est
Unit 5 3 of 5
PLAN HOLD CORPORATION • IRVINE, CALIFORNIA
RECORDED BY NUMBER 0704

DRAWING NUMBER
PLAN HOLD CORPORATION • IRVINE, CALIFORNIA
RECORDED BY NUMBER 0704

DRAWING NUMBER
PLAN HOLD CORPORATION • IRVINE, CALIFORNIA
RECORDED BY NUMBER 0704

DRAWING NUMBER
PLAN HOLD CORPORATION • IRVINE, CALIFORNIA
RECORDED BY NUMBER 0704



CURVE DATA

CURVE	DELTA	RADIUS	LENGTH	TANGENT
1	90°00'00"	25.00'	39.27'	25.00'
2	44°24'55"	50.00'	39.76'	20.41'
3	268°49'50"	55.00'	258.06'	---
4	54°51'00"	55.00'	52.65'	28.54'
5	53°02'37"	55.00'	50.92'	27.45'
6	53°02'36"	55.00'	50.92'	27.45'
7	54°50'58"	55.00'	52.65'	28.54'
8	51°02'56"	55.00'	49.00'	26.26'
9	62°37'50"	55.00'	60.12'	33.46'
10	100°18'06"	55.00'	96.28'	65.90'
11	25°09'58"	50.00'	21.96'	11.16'
12	19°14'57"	50.00'	16.80'	8.48'
13	44°37'55"	325.00'	253.17'	133.40'
14	44°37'55"	375.00'	292.12'	153.92'
15	07°10'04"	325.00'	40.66'	20.36'
16	18°30'39"	325.00'	105.00'	52.96'
17	18°57'12"	325.00'	107.51'	54.25'
18	04°07'44"	375.00'	27.02'	13.52'
19	13°01'17"	375.00'	85.22'	42.80'
20	13°12'26"	375.00'	86.44'	43.41'
21	14°16'28"	375.00'	93.94'	46.96'

FINAL MAP # PD99-02-05
FOR
SARATOGA SPRINGS ESTATES
UNIT 5
A PLANNED DEVELOPMENT
BEING A PORTION OF THE WEST 1/2 OF SECTION 28, AND THE
EAST 1/2 OF SECTION 29, TOWNSHIP 14 NORTH, RANGE 20 EAST,
M.D.B.&M.
DOUGLAS COUNTY NEVADA
SHEET 3 OF 5 SHEETS
DOCUMENT #513570

DRAWING NUMBER
Saratoga Springs Est
Unit 5 4 of 5
PLAN HOLD CORPORATION • IRVINE, CALIFORNIA
REORDER BY NUMBER 0204R

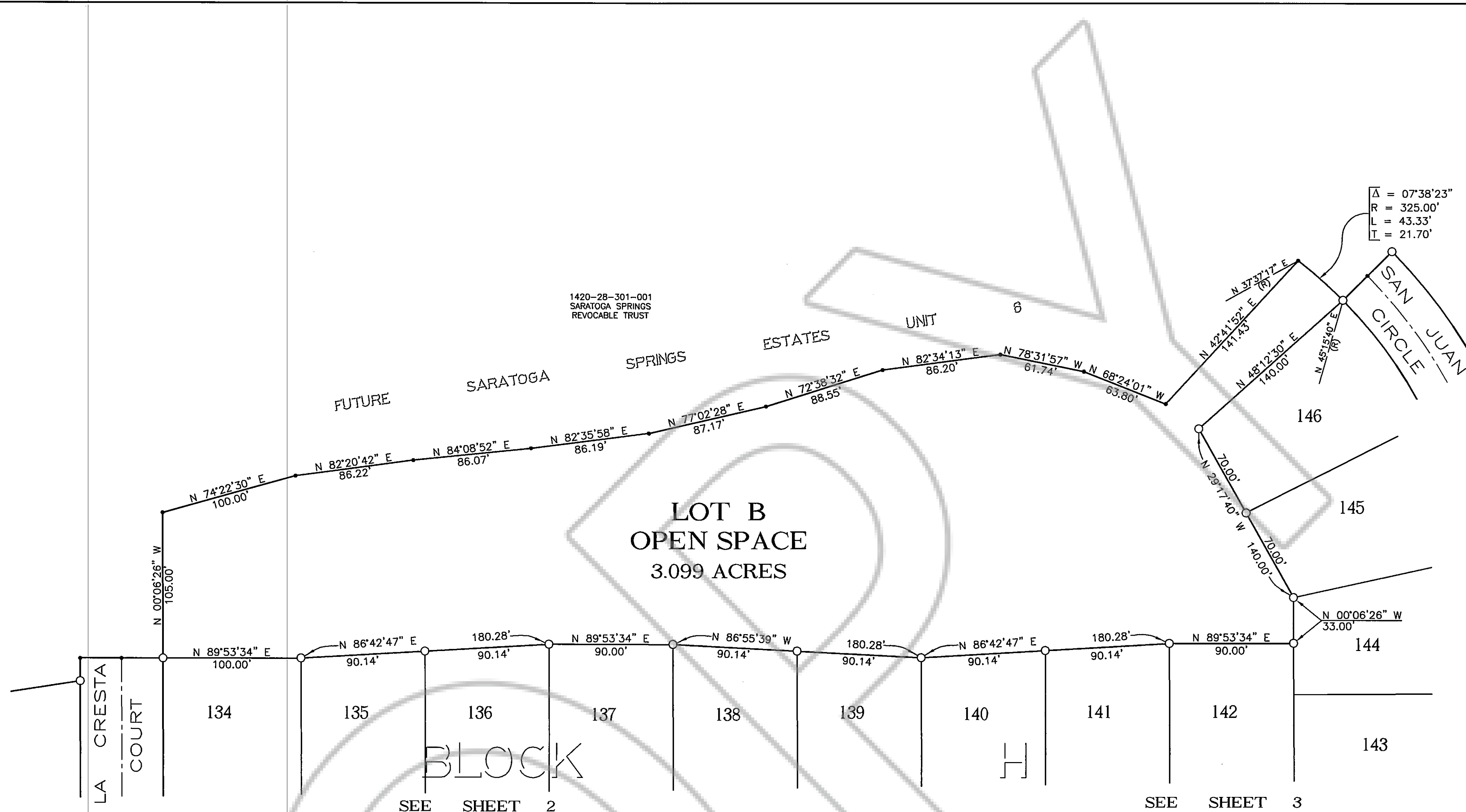
DRAWING NUMBER
PLAN HOLD CORPORATION • IRVINE, CALIFORNIA
REORDER BY NUMBER 0204R

DRAWING NUMBER
PLAN HOLD CORPORATION • IRVINE, CALIFORNIA
REORDER BY NUMBER 0204R

DRAWING NUMBER
PLAN HOLD CORPORATION • IRVINE, CALIFORNIA
REORDER BY NUMBER 0204R



SEE SHEET 5



$\Delta = 07^{\circ}38'23''$
R = 325.00'
L = 43.33'
T = 21.70'

1420-28-301-001
SARATOGA SPRINGS
REVOCABLE TRUST

LOT B
OPEN SPACE
3.099 ACRES

BLOCK H

SEE SHEET 2

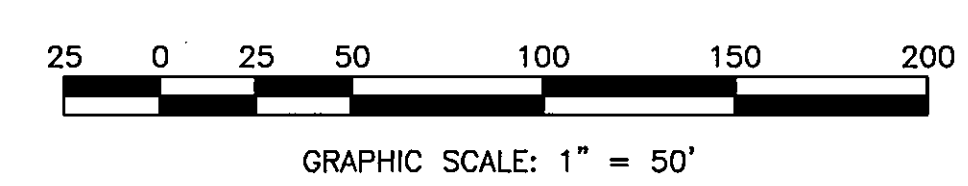
SEE SHEET 3

LEGEND

- - SET 5/8" REBAR AND CAP P.L.S. 3209
- - INDICATES A CALCULATED POINT, NOTHING FOUND OR SET

NOTE:

- 1) ALL PARCELS CREATED BY THIS MAP SHALL HAVE PUBLIC UTILITY EASEMENTS 5.00' ON BOTH SIDES OF ALL SIDE AND REAR LOT LINES AND 7.50' ADJACENT TO ALL STREET RIGHT-OF-WAY UNLESS OTHERWISE NOTED.
- 2) FURTHER DIVISION OF PARCELS WITHIN THE PLANNED DEVELOPMENT IS NOT PERMITTED.



WESTERN
ENGINEERING & SURVEYING SERVICES
3032 SILVER SAGE DRIVE
CARSON CITY, NEVADA 89701
(775) 884-3200 FAX (775) 884-3211

FINAL MAP # PD99-02-05
FOR
SARATOGA SPRINGS ESTATES
UNIT 5
A PLANNED DEVELOPMENT
BEING A PORTION OF THE WEST 1/2 OF SECTION 28, AND THE
EAST 1/2 OF SECTION 29, TOWNSHIP 14 NORTH, RANGE 20 EAST,
M.D.B.&M.
DOUGLAS COUNTY NEVADA
SHEET 4 OF 5 SHEETS

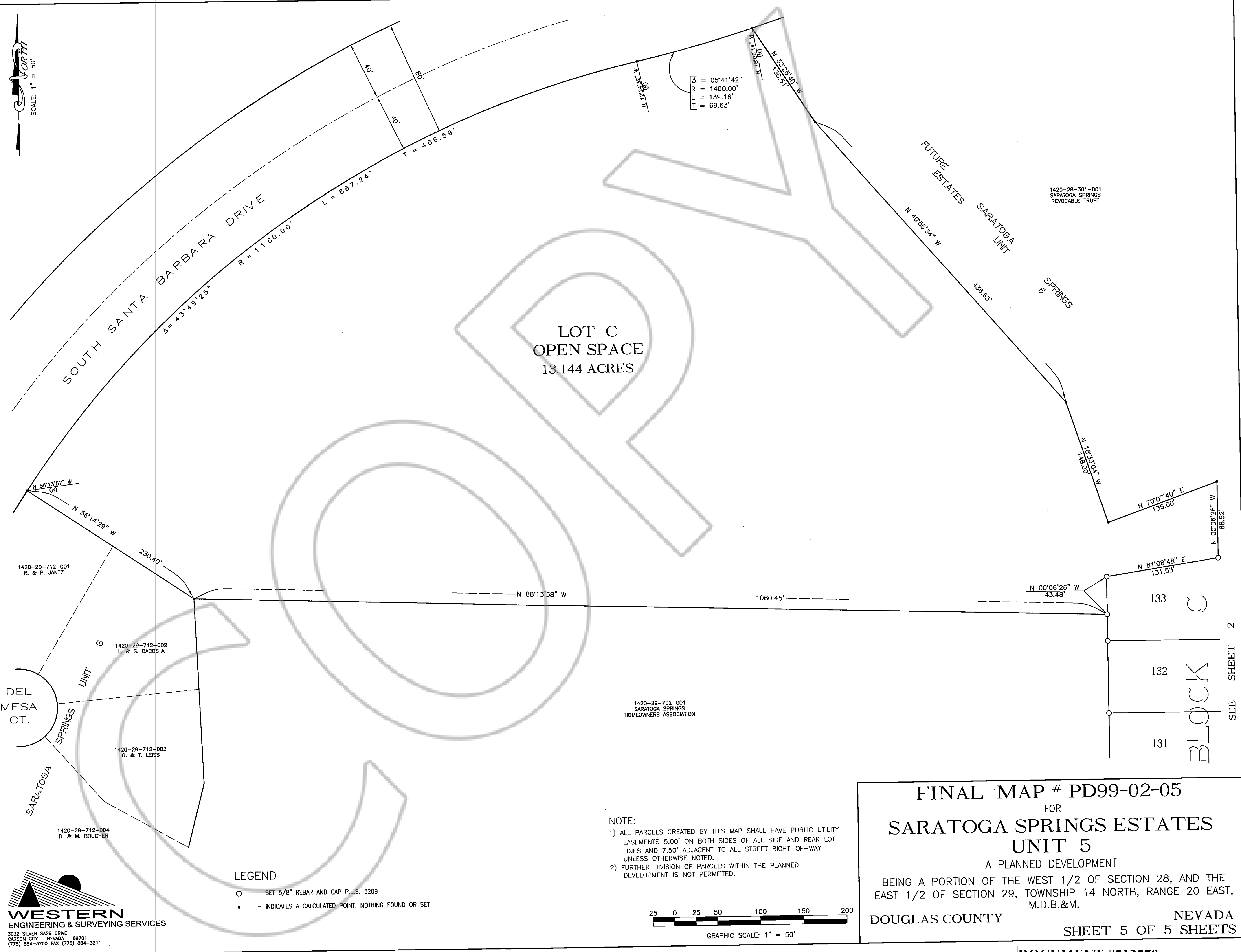
DOCUMENT #513570

DRAWING NUMBER
Saratoga Springs Est
Unit 5 50FS
PLAN HOLD CORPORATION • IRVINE, CALIFORNIA
REGISTERED PROFESSIONAL ENGINEER

DRAWING NUMBER
PLAN HOLD CORPORATION • IRVINE, CALIFORNIA
REGISTERED PROFESSIONAL ENGINEER

DRAWING NUMBER
PLAN HOLD CORPORATION • IRVINE, CALIFORNIA
REGISTERED PROFESSIONAL ENGINEER

DRAWING NUMBER
PLAN HOLD CORPORATION • IRVINE, CALIFORNIA
REGISTERED PROFESSIONAL ENGINEER



FINAL MAP # PD99-02-05
 FOR
SARATOGA SPRINGS ESTATES
UNIT 5
 A PLANNED DEVELOPMENT
 BEING A PORTION OF THE WEST 1/2 OF SECTION 28, AND THE
 EAST 1/2 OF SECTION 29, TOWNSHIP 14 NORTH, RANGE 20 EAST,
 M.D.B.&M.
 DOUGLAS COUNTY NEVADA
SHEET 5 OF 5 SHEETS

DOCUMENT #513570

SEE SHEET 2