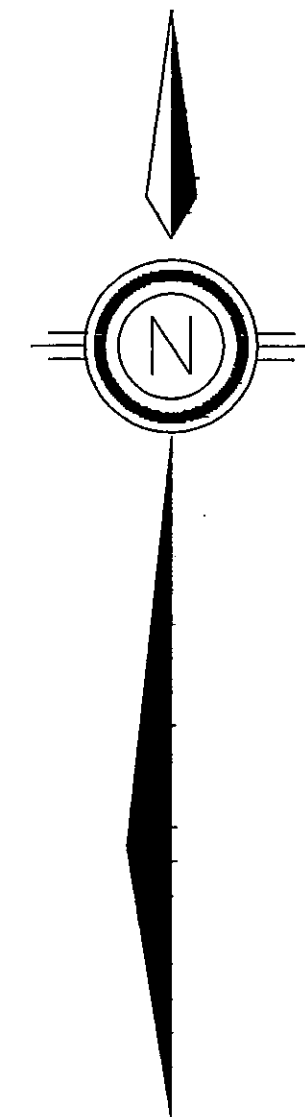


BASIS OF BEARINGS

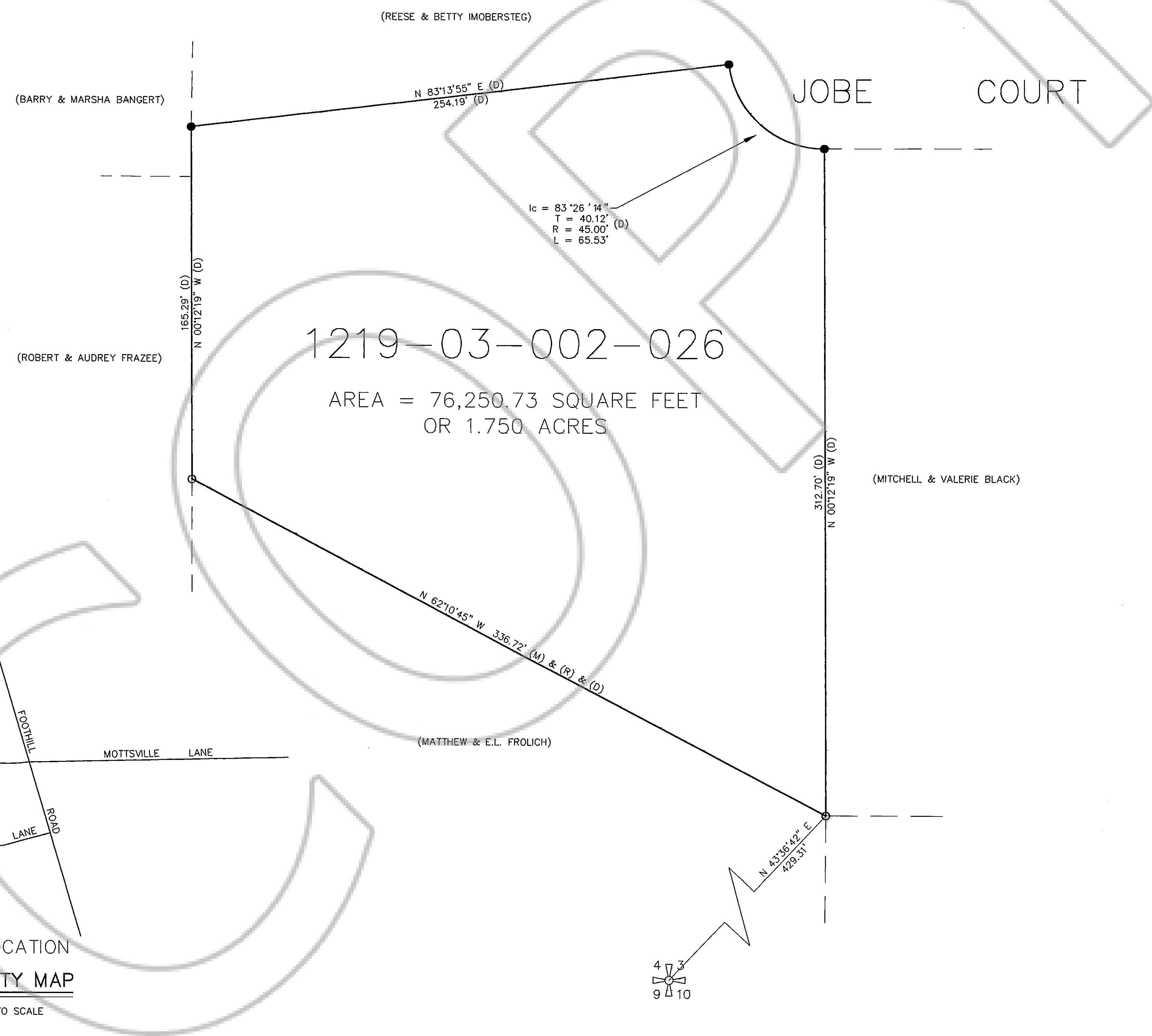
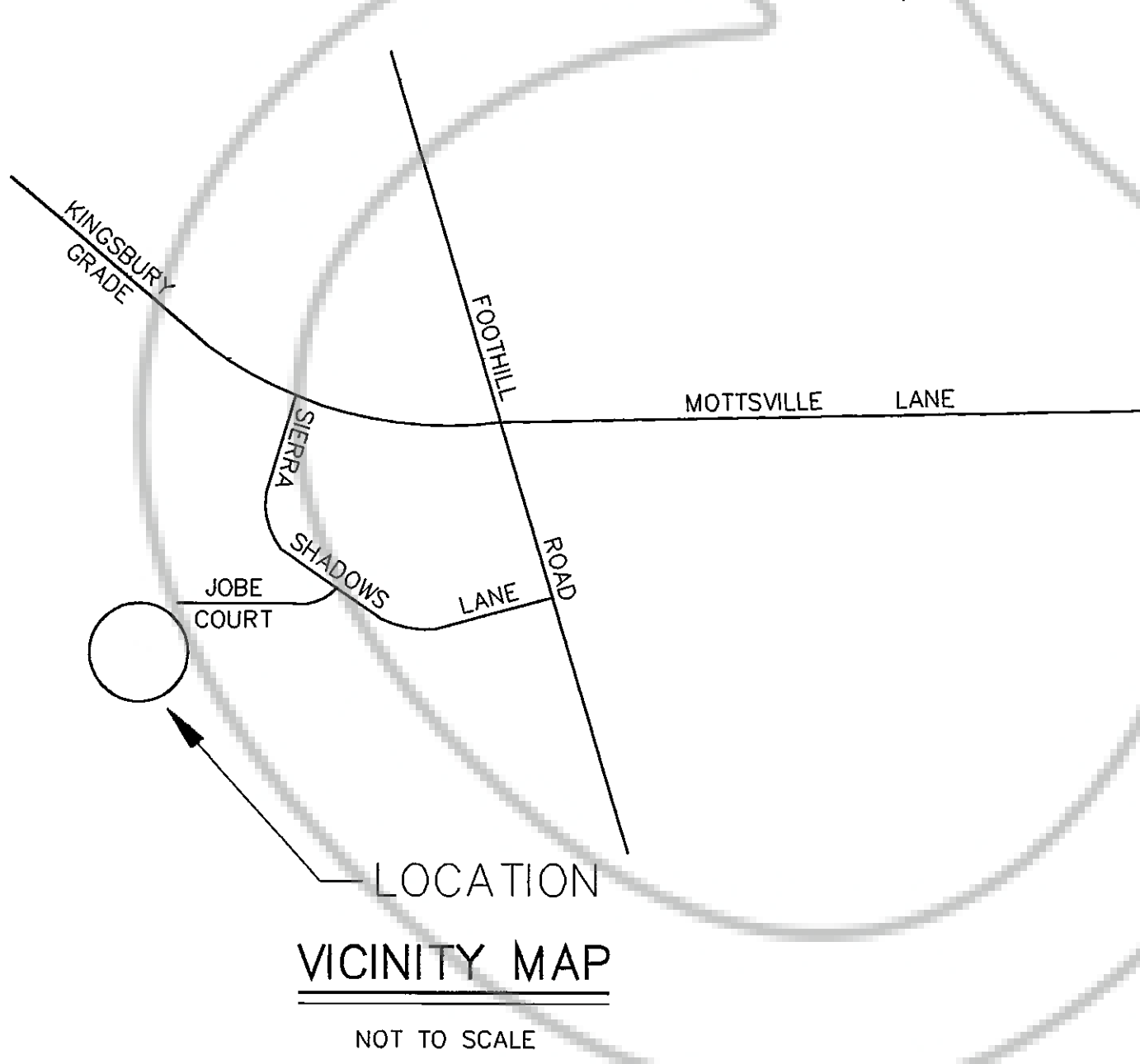
THE BASIS OF BEARINGS OF THIS MAP IS THE WEST LINE OF PARCEL #2 OF A PARCEL MAP FOR HARLEY B. JOBE, JR. & MERIAM W. JOBE, DOCUMENT #76833, OFFICIAL RECORDS, DOUGLAS COUNTY, NEVADA. SAID LINE BEARS N0°12'19"W.

LEGEND

- SET 5/8" REBAR WITH PLASTIC CAP STAMPED PLS 3090.
- FOUND 1/2 INCH I.D. PIPE AS PER (R).
- (R) RECORD INFORMATION AS PER A PARCEL MAP FOR HARLEY B. JOBE, JR. & MERIAM W. JOBE, DOCUMENT #76833, OFFICIAL RECORDS, DOUGLAS COUNTY, NEVADA.
- (M) MEASURED.
- (D) DEED, BOOK 1189, PAGE 2130, DOCUMENT #214862, OFFICIAL RECORDS, DOUGLAS COUNTY, NEVADA.



SCALE: 1" = 30'

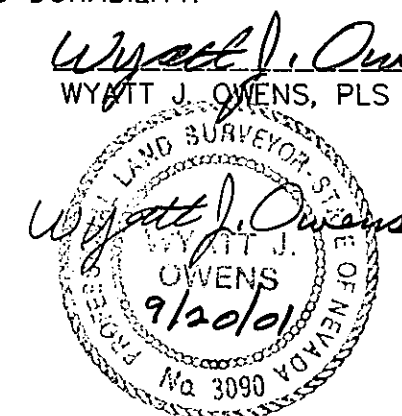


SURVEYOR'S CERTIFICATE

I, WYATT J. OWENS, A PROFESSIONAL LAND SURVEYOR REGISTERED IN THE STATE OF NEVADA, CERTIFY THAT:

1. THIS PLAT REPRESENTS THE RESULTS OF A SURVEY CONDUCTED UNDER MY DIRECT SUPERVISION AT THE INSTANCE OF WILLIAM CLINE.
2. THE LANDS SURVEYED LIE WITHIN SECTION 3, TOWNSHIP 12 NORTH, RANGE 19 EAST, M.D.B.&M., AND THE SURVEY WAS COMPLETED ON SEPTEMBER 13, 2001.
3. THIS PLAT COMPLIES WITH THE APPLICABLE STATE STATUTES AND ANY LOCAL ORDINANCES IN EFFECT ON THE DATE THAT THE GOVERNING BODY GAVE ITS FINAL APPROVAL.
4. THE MONUMENTS DEPICTED ON THIS PLAT ARE OF THE CHARACTER SHOWN, OCCUPY THE POSITIONS INDICATED AND ARE OF SUFFICIENT NUMBER AND DURABILITY.

9/12/01
DATE
Wyatt J. Owens
WYATT J. OWENS, PLS 3090



RECORDER'S CERTIFICATE

FILED FOR RECORD THIS 20th DAY OF September 2001, AT 46 MINUTES PAST 10 O'CLOCK A.M. IN BOOK 0901 OF OFFICIAL RECORDS PAGE 409 DOCUMENT NUMBER 523108 RECORDED AT THE REQUEST OF WYATT J. OWENS.

Dorena Kromberg, Deputy
DOUGLAS COUNTY RECORDER

SHEET 1 OF 1

RECORD OF SURVEY
FOR
WILLIAM & ALICE CLINE
WITHIN THE SW1/4 OF THE SW1/4 OF SECTION 3,
T. 12 N., R. 19 E., M.D.B. & M.
DOUGLAS COUNTY, NEVADA