

**REFERENCES**

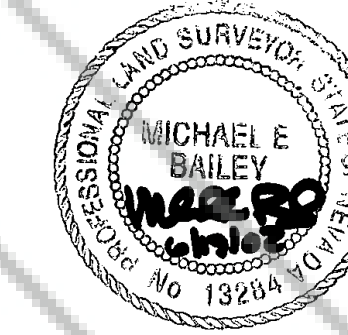
(R-1) DOC. NO. 376672, BOOK 1295, PAGE 1534, OFFICIAL RECORDS 12/12/1995  
 (R-2) DOC. NO. 465621, BOOK 499, PAGE 2490, OFFICIAL RECORDS 04/13/1999.

**LEGEND**

- SET 5/8" REBAR WITH PLASTIC CAP PLS 13284
- FOUND 5/8" REBAR TAGGED PLS 6497

**SURVEYOR'S CERTIFICATE**

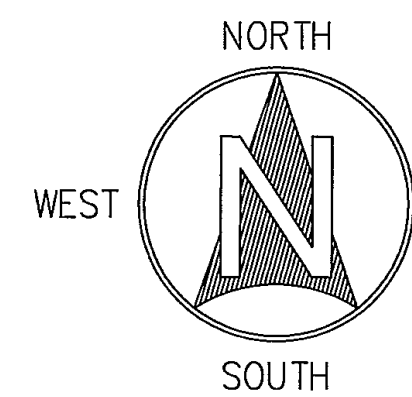
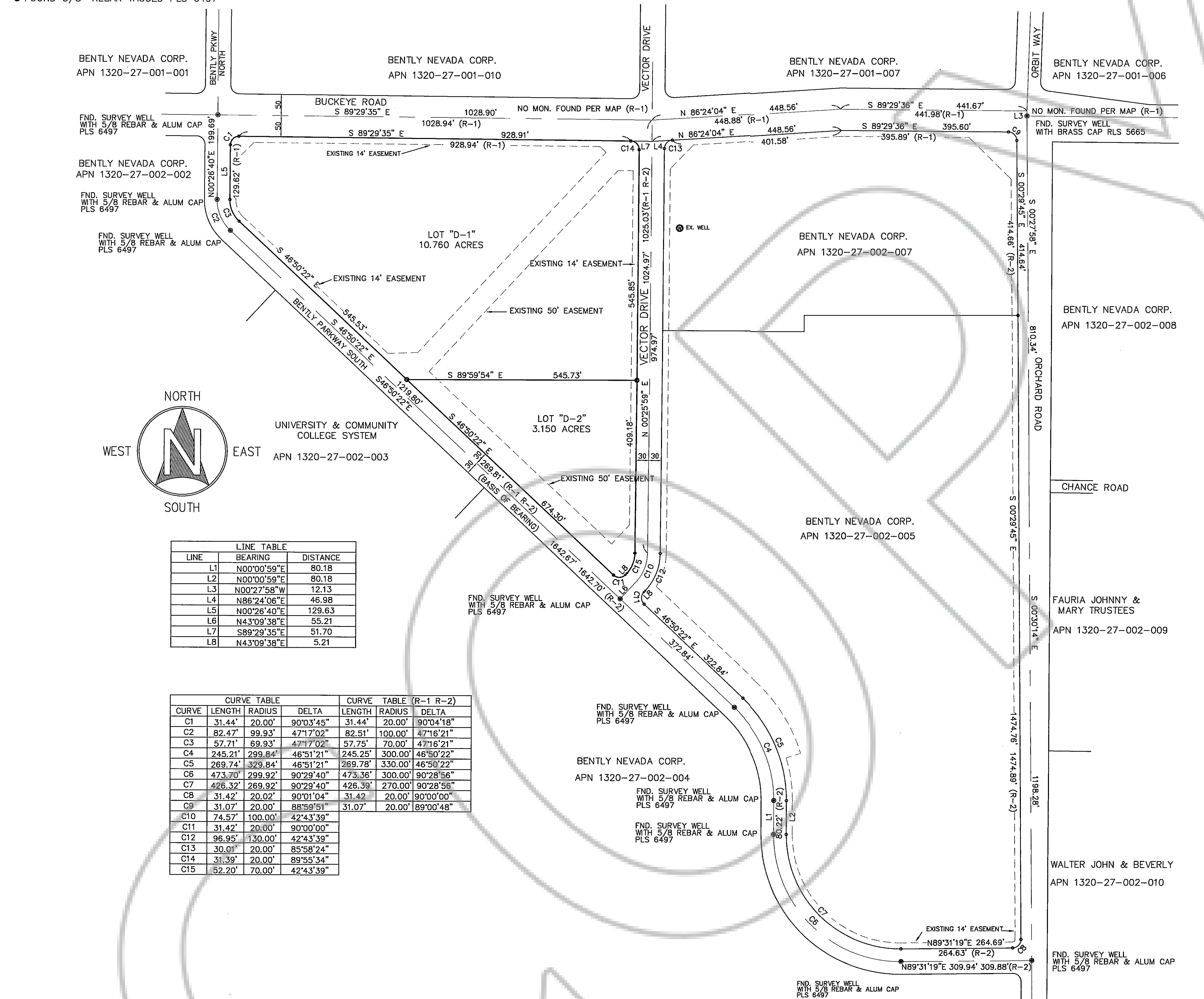
- 1) I, MICHAEL E. BAILEY, A PROFESSIONAL LAND SURVEYOR, LICENSED IN THE STATE OF NEVADA DO HEREBY STATE THAT:
- 2) I HAVE PERFORMED A FIELD SURVEY SUFFICIENT TO LOCATE AND IDENTIFY PROPERLY THE PROPOSED BOUNDARY LINE ADJUSTMENT.
- 3) ALL CORNERS AND ANGLE POINTS OF THE ADJUSTED BOUNDARY HAVE BEEN DEFINED BY MONUMENTS OR WILL BE OTHERWISE DEFINED ON A DOCUMENT OF RECORD AS REQUIRED BY NRS 625.340.
- 4) THIS MAP IS NOT IN CONFLICT WITH THE PROVISIONS OF NRS 278.010 TO 278.630, INCLUSIVE; PROVISIONS OF NRS 625; AND ALL ORDINANCES.
- 5) THIS MAP IS A TRUE AND ACCURATE REPRESENTATION OF THE LANDS SURVEYED UNDER MY SUPERVISION AT THE INSTANCE OF BENTLY NEVADA CORPORATION.
- 6) THE LANDS SURVEYED LIE WITHIN THE SOUTH 1/2 OF SECTION 27, TOWNSHIP 13 NORTH, RANGE 20 EAST, M.D.M., AND THE SURVEY WAS COMPLETED ON MARCH 1, 2002.



**M. BAILEY**  
 MICHAEL E. BAILEY P.L.S. #13284  
 DATE **6/19/02**

**BASIS OF BEARING**

THE BASIS OF BEARING FOR THIS PLAT IS THE CENTER LINE OF BENTLY PARKWAY SOUTH, S 46°50'22" E, AS SHOWN ON THE RECORD OF SURVEY TO SUPPORT A LOT LINE ADJUSTMENT FOR BENTLY NEVADA CORPORATION DOCUMENT NO. 465621, OF THE DOUGLAS COUNTY RECORDS.



LINE	BEARING	DISTANCE
L1	N00°00'59"E	80.18
L2	N00°00'59"E	80.18
L3	N00°27'58"W	12.13
L4	N86°24'06"E	46.98
L5	N00°26'40"E	129.63
L6	N43°09'38"E	55.21
L7	S89°29'35"E	51.70
L8	N43°09'38"E	5.21

CURVE	LENGTH	RADIUS	DELTA	LENGTH	RADIUS	DELTA
C1	31.44'	20.00'	90°03'45"	31.44'	20.00'	90°04'18"
C2	82.47'	99.93'	47°17'02"	82.51'	100.00'	47°16'21"
C3	57.71'	69.93'	47°17'02"	57.75'	70.00'	47°16'21"
C4	245.21'	299.84'	46°51'21"	245.25'	300.00'	46°50'22"
C5	269.74'	329.84'	46°51'21"	269.78'	330.00'	46°50'22"
C6	473.70'	299.92'	90°29'40"	473.36'	300.00'	90°28'56"
C7	426.32'	269.92'	90°29'40"	426.39'	270.00'	90°28'56"
C8	31.42'	20.02'	90°01'04"	31.42'	20.00'	90°00'00"
C9	31.07'	20.00'	88°59'51"	31.07'	20.00'	89°00'48"
C10	74.57'	100.00'	42°43'39"			
C11	31.42'	20.00'	90°00'00"			
C12	96.95'	130.00'	42°43'39"			
C13	30.01'	20.00'	85°58'24"			
C14	31.39'	20.00'	89°55'34"			
C15	52.20'	70.00'	42°43'39"			

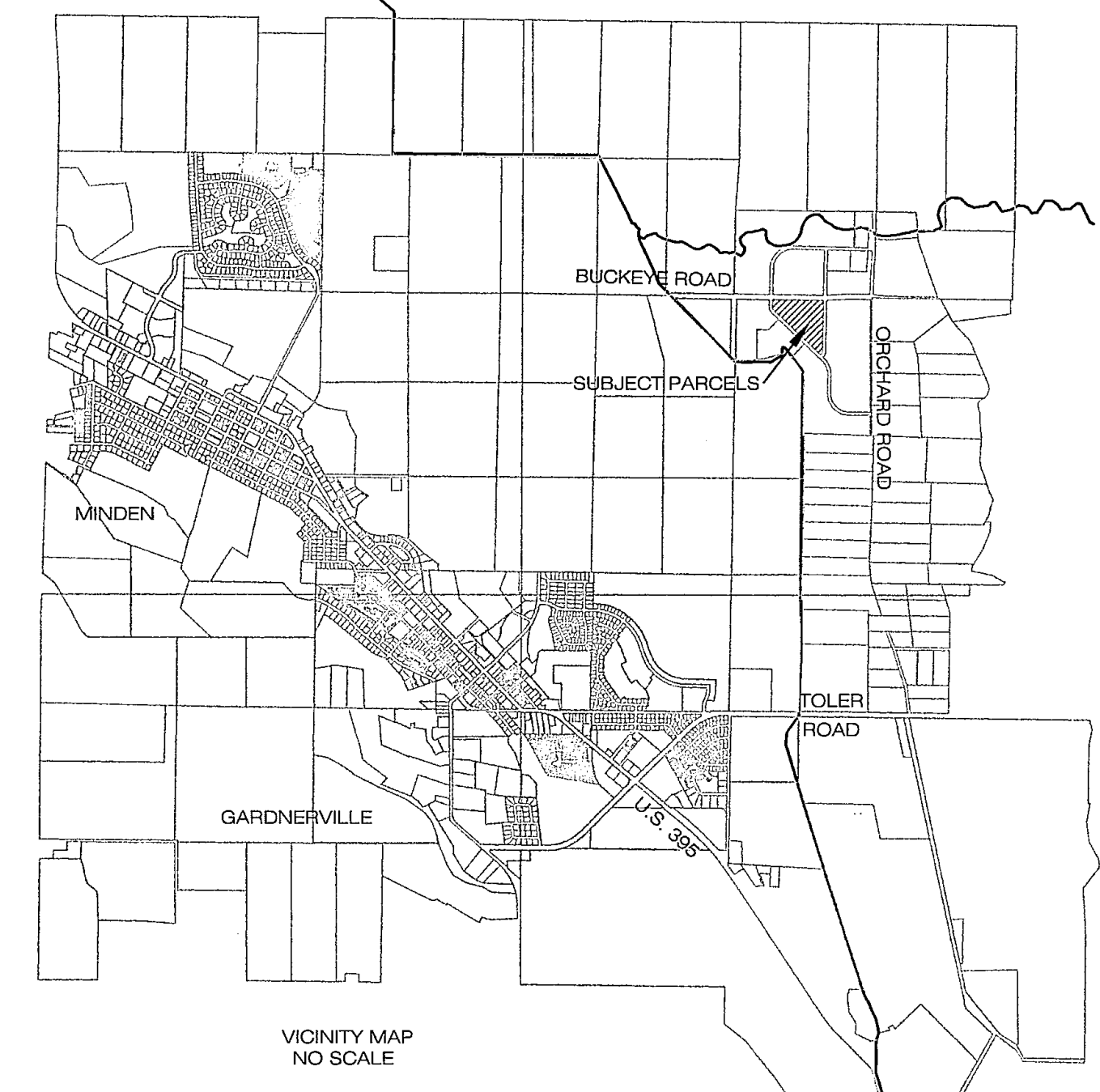
**NOTES**

1. PER MAP DOC. NO. 376672, ALL INTERNAL EASEMENTS SHOWN ARE FOR FUTURE DRAINAGE, LANDSCAPE, PEDESTRAIN ACCESS AND PUBLIC UTILITY PURPOSES, UNLESS OTHERWISE SHOWN.
2. THIS AREA IS IN FLOOD ZONE X-UN PURSANT TO F.I.R.M. RATE MAP NO. 32005C0255F, DATED NOVEMBER 08, 1999.
3. THERE IS 7.5 FOOT P.U.E. ALONG ALL ROAD FRONTAGES AND A 5 FOOT P.U.E. ALONG ALL OTHER LOT LINES
4. THIS RECORD OF SURVEY HAS BEEN PREPARED TO INDICATE THE LIMITS OF LOTS D-1 AND D-2 WHICH IS TO BE LOCATED WITHIN BLOCK D, A PARCEL CONTAINED WITHIN THE FINAL MAP # 1013 BENTLY SCIENCE PARK, AS RECORDED IN BOOK 1295 PAGE 1534 DOC. NO. 376672, IN COMPLIANCE WITH NRS 278.325, FINAL MAP #1013 FOR BENTLY SCIENCE PARK WAS PREPARED WITH NO LOTS.
5. THIS RECORD OF SURVEY IS NOT IN CONFLICT WITH THE REQUIREMENTS OF NRS 278.010 TO 278.630, INCLUSIVE.

**RECORDER'S CERTIFICATE**

FILED FOR RECORD THIS 19th DAY OF June, 2002, AT 12 MINUTES PAST 2 O'CLOCK P.M. IN BOOK 0602 OF OFFICIAL RECORDS, AT PAGE 6005; DOCUMENT NO. 545092 RECORDED AT THE REQUEST OF TRENDWEST RESORTS INC.

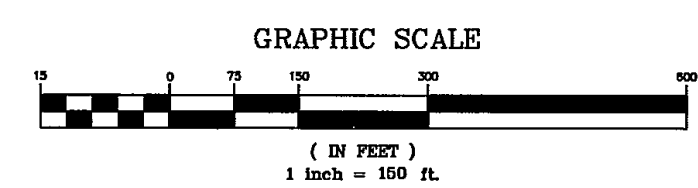
*Barbara Clark, Deputy* 6/19/02  
 LINDA SLATER  
 DOUGLAS COUNTY RECORDER



**RECORD OF SURVEY  
 BLOCK "D" OF BENTLY SCIENCE PARK  
 FOR  
 BENTLY NEVADA CORPORATION**

WITHIN  
 A PORTION OF THE SOUTH 1/2 OF SECTION 27,  
 T 13 N, R 20 E, M.D.M. DOUGLAS COUNTY, NEVADA

**Harding ESE** Engineering, Planning, Surveying, & Construction Services  
 A MACTEC COMPANY  
 1572 East College Parkway, Suite 162  
 Carson City, Nevada 89706  
 (775) 888-9992



MARCH 20, 2001

SHEET 1 OF 1

27-13-20  
 Doc# 545092  
 BENTLY