

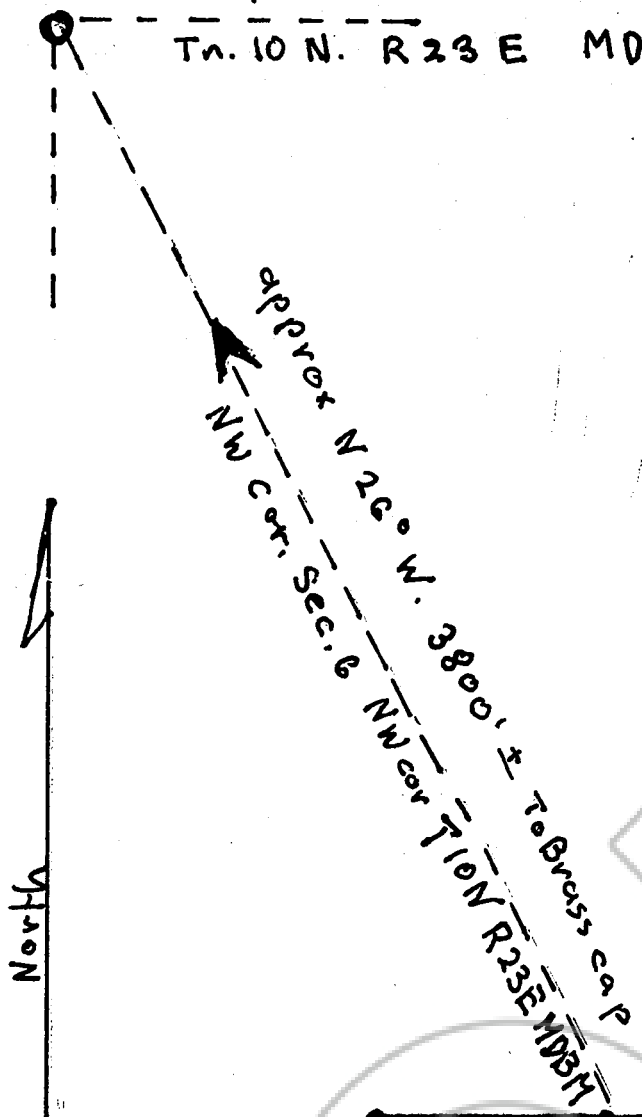
5 claims
#79.00

NEVADA NMC
829320

NEVADA NMC
829316

RECEIVED NSO BLM
2002 JUN -3 PM 2:40

Brass cap - NW corner Sec. 6
Tn. 10 N. R23 E MDBM.

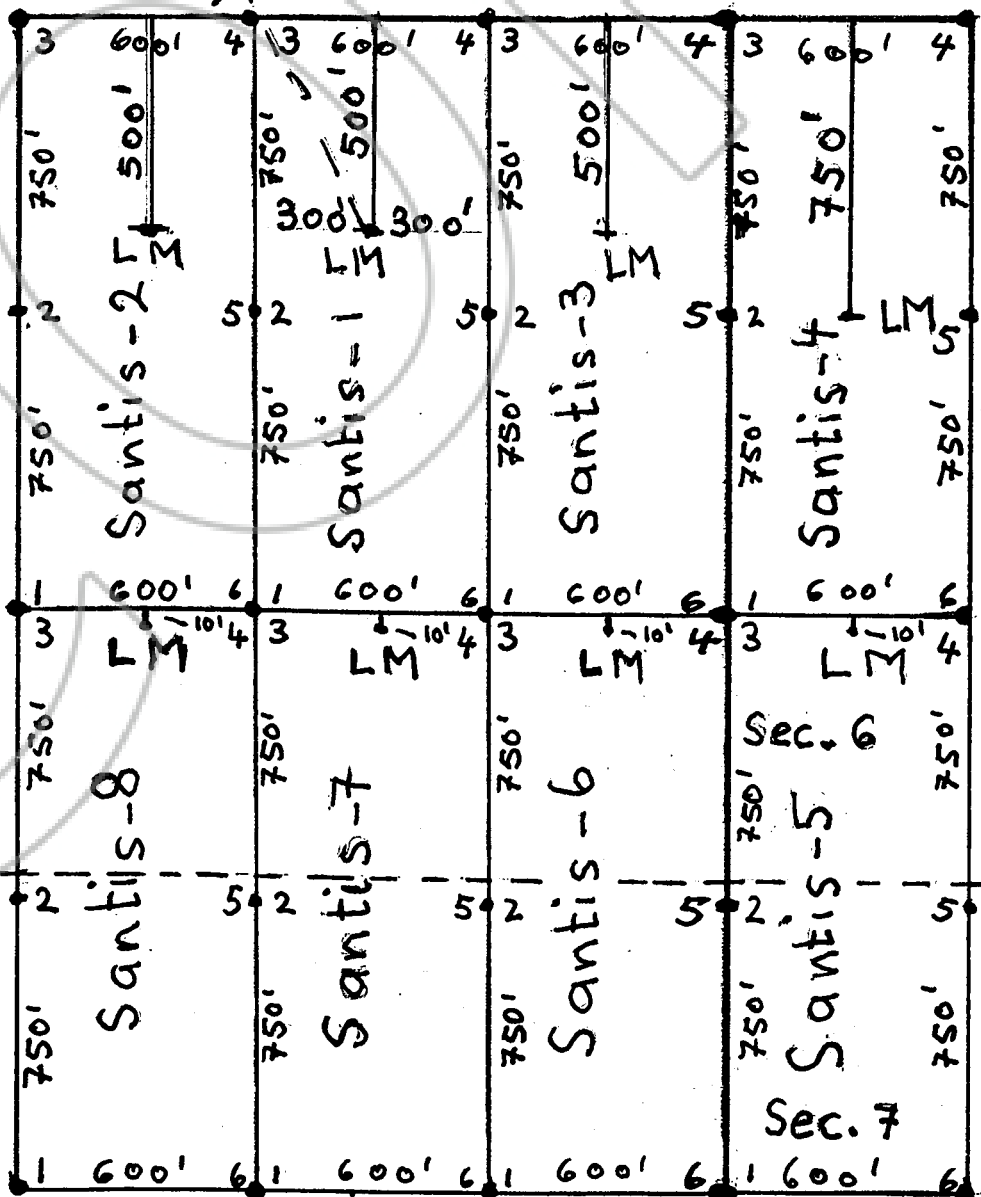


Map of Santis 1 thru 8
Lode Mining Claims
Douglas County Nevada
Located

By Martin Reich
State Ct. 38 30
Wellington Nv. 89444

North

Scale 1" = 600'



Santis 1, 3, 4 are current
Relocation of Santis 2, 5, 6, 7, 8

0545372

BK0602PG07465

COPY

REQUESTED BY

Martin Reich

IN OFFICIAL RECORDS OF
DOUGLAS CO., NEVADA

2002 JUN 21 PM 4: 37

LINDA SLATER
RECORDER

\$79⁰⁰ PAID ka DEPUTY

0545372

BK0602PG07466