

15

CORNER RECORD

**SURVEYOR'S CERTIFICATE**

I, Robert O. LaRiviere, a Professional Land Surveyor registered in the State of Nevada, certify that:

1. This corner record represents the establishment or restoration of a corner or accessory to a corner conducted under my supervision.
2. The monument or accessories perpetuated are located within the NW ¼ of Section 12, Township 14 North, Range 19 East, Mount Diablo Meridian, Douglas County, Nevada and the establishment or restoration was completed on May 10, 2002.
3. This corner Record has been filed pursuant to NRS 329.140 or NRS 329.150 and complies with the provisions of NAC 329.010 and any local ordinances in effect on the date that the establishment or restoration was completed.
4. The monument or witness monument and accessories found are of the character shown, occupy the positions indicated, and are of sufficient durability.

**Robert O. LaRiviere, PLS**  
Nevada License Number 8661

When Recorded Return To:

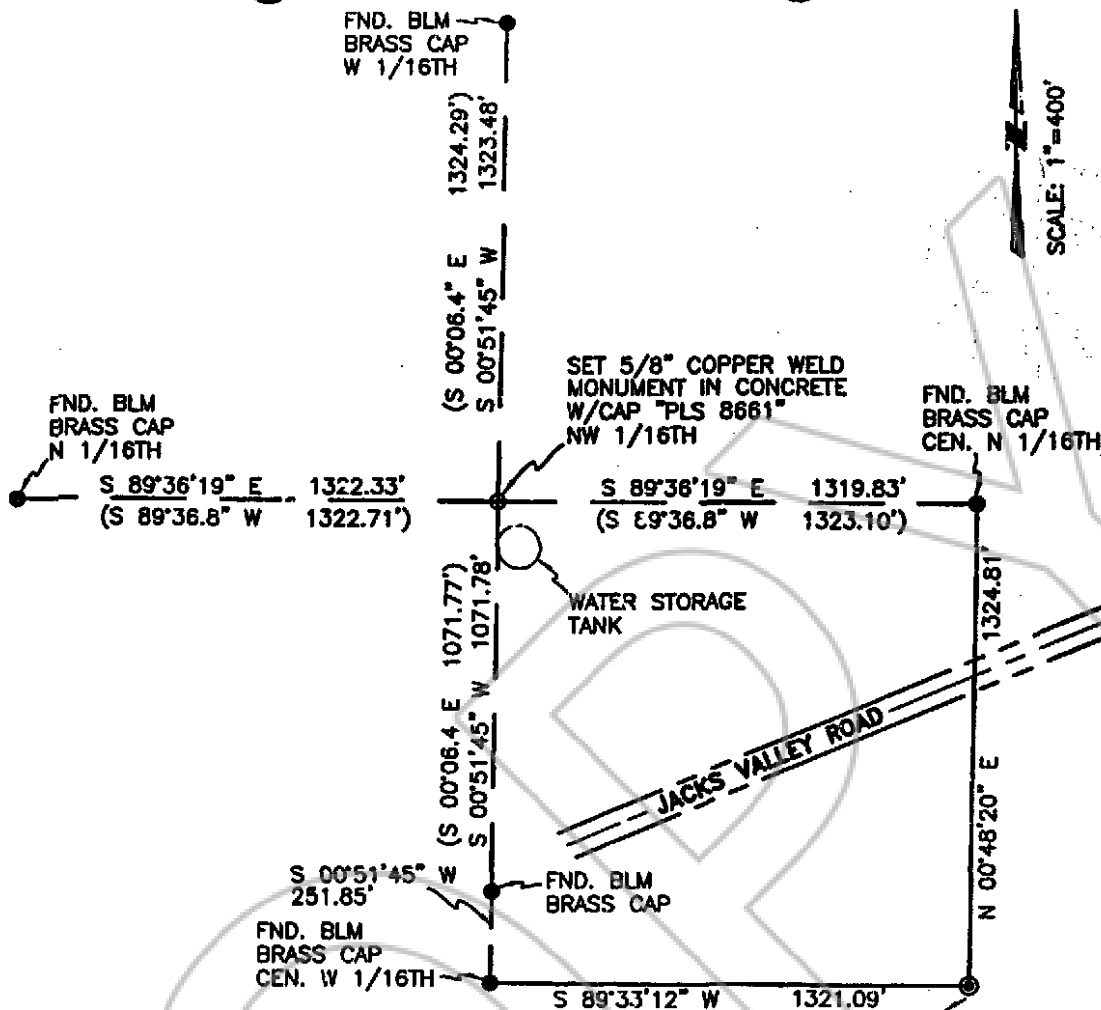
CFA, Inc.  
1150 Corporate Blvd.  
Reno, NV 89502

PLS 8661  
 T14N R19E  
 NW 1/16  
 S12  
 2002

Set 5/8" copper weld monument in Concrete.

0545745

BK0602PG08890



SCALE: 1"=400'

( ) = BLM RECORD INFORMATION PER "DEPENDENT RESURVEY AND SUBDIVISION OF SECTION 12". FILED IN THE EVADA STATE OFFICE ON APRIL 14, 1992.

THE BASIS OF BEARINGS FOR THIS SURVEY IS THE CENTERLINE OF JACKS VALLEY ROAD, TAKEN AS N 67°34'13" E, BASED UPON FOUND MONUMENTATION.



PLANNERS • ENGINEERS • LANDSCAPE ARCHITECTS  
SURVEYORS • CONSTRUCTION INSPECTION

1150 CORPORATE BLVD. RENO, NV 89502 (775) 856-1150 FAX (775) 856-1160

REQUESTED BY  
*CFA Inc*  
IN OFFICIAL RECORDS OF  
DOUGLAS COUNTY, NEVADA

2002 JUN 27 AM 9: 21

LINDA SALTER  
RECORDER

\$15.00 PAID \$22.00 DEPUTY

0545745

BK0602PG08891

**CORNER RECORD**

**SURVEYOR'S CERTIFICATE**

I, Robert O. LaRiviere, a Professional Land Surveyor registered in the State of Nevada, certify that:

1. This corner record represents the establishment or restoration of a corner or accessory to a corner conducted under my supervision.
2. The monument or accessories perpetuated are located within the NW ¼ of Section 12, Township 14 North, Range 19 East, Mount Diablo Meridian, Douglas County, Nevada and the establishment or restoration was completed on May 10, 2002.
3. This corner Record has been filed pursuant to NRS 329.140 or NRS 329.150 and complies with the provisions of NAC 329.010 and any local ordinances in effect on the date that the establishment or restoration was completed.
4. The monument or witness monument and accessories found are of the character shown, occupy the positions indicated, and are of sufficient durability.

**Robert O. LaRiviere, PLS**  
Nevada License Number 8661

**When Recorded Return To:**

✓ CFA, Inc.  
1150 Corporate Blvd.  
Reno, NV 89502

**PLS 8667**

T14N R19E  
NW 1/16  
S12  
2002

Set 5/8" copper weld monument in  
Concrete.

0545745

BK 0602 PG 08890

FND. BLM  
BRASS CAP  
W 1/16TH

1324.29'  
1323.48'

(S 00°06.4' E  
S 00°51'45" W



FND. BLM  
BRASS CAP  
N 1/16TH

S 89°36'19" E 1322.33'  
(S 89°36.8" W 1322.71')

SET 5/8" COPPER WELD  
MONUMENT IN CONCRETE  
W/CAP "PLS 8661"  
NW 1/16TH

FND. BLM  
BRASS CAP  
CEN. N 1/16TH

S 89°36'19" E 1319.83'  
(S 89°36.8" W 1323.10')

WATER STORAGE  
TANK

(S 00°06.4' E 1071.77')  
S 00°51'45" W 1071.78'

JACKS VALLEY ROAD

S 00°51'45" W  
251.85'

FND. BLM  
BRASS CAP

FND. BLM  
BRASS CAP  
CEN. W 1/16TH

S 89°33'12" W 1321.09'

1324.81'  
N 00°48'20" E

FND. BLM  
BRASS CAP  
CEN. SEC. 12  
T.14N., R.19E., M.D.M.

( ) = BLM RECORD INFORMATION PER "DEPENDENT RESURVEY  
AND SUBDIVISION OF SECTION 12". FILED IN THE EVADA STATE  
OFFICE ON APRIL 14, 1992.

THE BASIS OF BEARINGS FOR THIS SURVEY IS THE CENTERLINE OF  
JACKS VALLEY ROAD, TAKEN AS N 67°34'13" E, BASED UPON  
FOUND MONUMENTATION.



PLANNERS • ENGINEERS • LANDSCAPE ARCHITECTS  
SURVEYORS • CONSTRUCTION INSPECTION

1150 CORPORATE BLVD. RENO, NV 89502 (775) 856-1150 FAX: (775) 856-1160

REQUESTED BY  
CFA Inc  
IN OFFICIAL RECORDS OF  
DOUGLAS CO., NEVADA

2002 JUN 27 AM 9: 21

LINDA SLATER  
RECORDER

\$15<sup>00</sup> PAID *ks* DEPUTY

0545745

BK0602PG08891