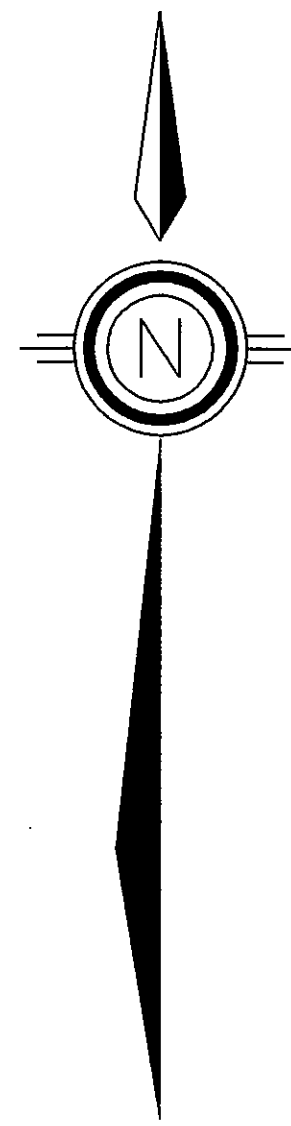


BASIS OF BEARINGS

THE BASIS OF BEARINGS OF THIS MAP IS THE WEST LINE OF THE TIMOTHY HAY PARCEL AS PER (R). SAID LINE BEARS N0°22'23"E.



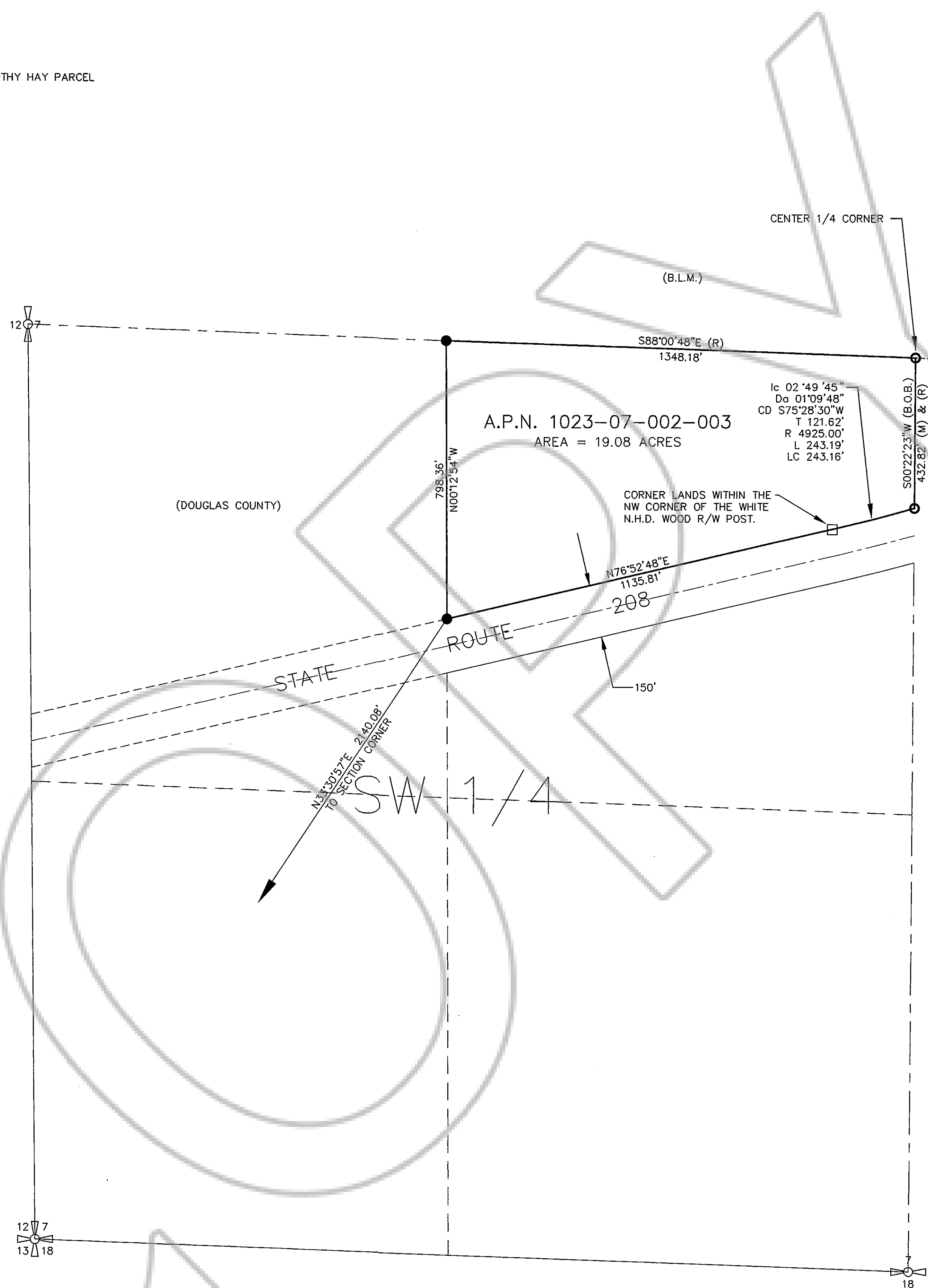
SCALE: 1" = 200'

LEGEND

- FOUND 5/8" REBAR WITH PLASTIC CAP STAMPED PLS 3090.
- SET 5/8" REBAR WITH PLASTIC CAP STAMPED PLS 3090.
- (R) RECORD OF SURVEY FOR TIMOTHY HAY, DOCUMENT #263250, OFFICIAL RECORDS, DOUGLAS COUNTY, NEVADA.
- (M) MEASURED.

NOTES

1. THIS IS A SURVEY OF DEED, BOOK 1096, PAGE 0101, DOCUMENT #397769, OFFICIAL RECORDS, DOUGLAS COUNTY, NEVADA.
2. STATE ROUTE 208 WAS LOCATED USING BRASS HIGHWAY CONTROL MONUMENTS AND NDOT MAPS.
3. THE SW1/4 OF SECTION 7 WAS CREATED USING THE RECORD OF SURVEY MAP FOR ROBERT C. & F.E. GOODALL, DOCUMENT #239522, OFFICIAL RECORDS, DOUGLAS COUNTY, NEVADA.



PARCEL

VICINITY MAP

NOT TO SCALE

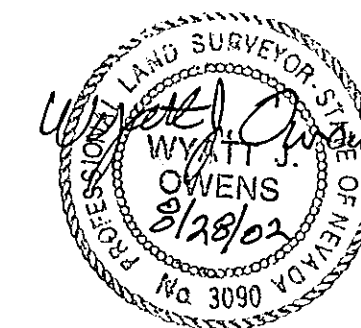
SURVEYOR'S CERTIFICATE

I, WYATT J. OWENS, A PROFESSIONAL LAND SURVEYOR REGISTERED IN THE STATE OF NEVADA, CERTIFY THAT:

1. THIS PLAT REPRESENTS THE RESULTS OF A SURVEY CONDUCTED UNDER MY DIRECT SUPERVISION AT THE INSTANCE OF KEITH WEEKS
2. THE LANDS SURVEYED LIE WITHIN SECTION 7, TOWNSHIP 10, NORTH, RANGE 23, EAST, M.D.B.&M., AND THE SURVEY WAS COMPLETED ON AUGUST 30, 2002.
3. THIS PLAT COMPLIES WITH THE APPLICABLE STATE STATUTES AND ANY LOCAL ORDINANCES IN EFFECT ON THE DATE THAT THE GOVERNING BODY GAVE IT'S FINAL APPROVAL.
4. THE MONUMENTS DEPICTED ON THIS PLAT ARE OF THE CHARACTER SHOWN, OCCUPY THE POSITIONS INDICATED AND ARE OF SUFFICIENT NUMBER AND DURABILITY.

8/30/02
DATE

Wyatt J. Owens
WYATT J. OWENS, PLS 3090



RECORDER'S CERTIFICATE

FILED FOR RECORD THIS 30th DAY OF August 2002, AT 12 MINUTES PAST 7 O'CLOCK P.M. IN BOOK 0807 OF OFFICIAL RECORDS PAGE 12016 DOCUMENT NUMBER 331215 RECORDED AT THE REQUEST OF WYATT J. OWENS.

Robin Burned
DOUGLAS COUNTY RECORDER

RECORD OF SURVEY
FOR
KEITH AND ZENA WEEKS
WITHIN THE NE1/4 OF THE SW1/4 OF SECTION 7,
T. 10 N., R. 23 E., M.D.B. & M.,
DOUGLAS COUNTY, NEVADA

7-10-23
Doc# 57115 WEEKS