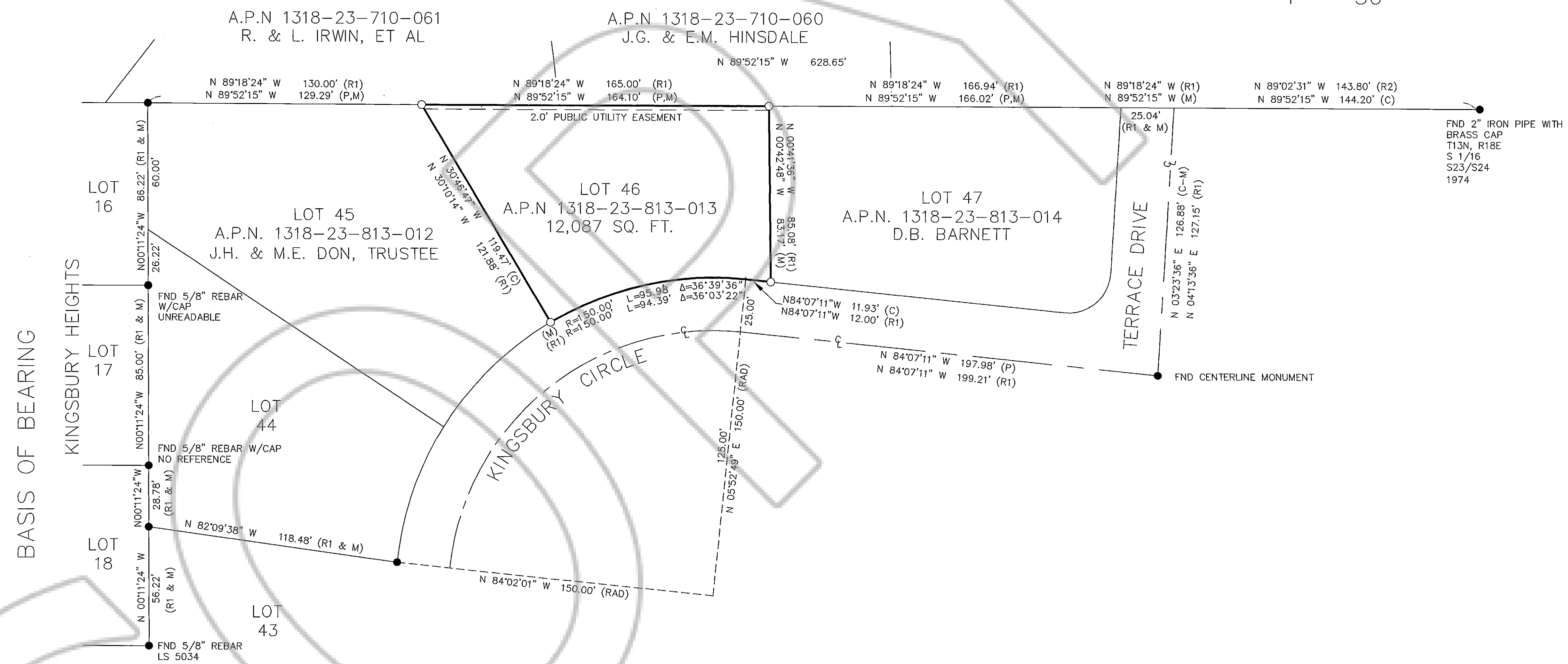


LAKWOOD KNOLLS SUBDIVISION



LEGEND

- FOUND 3/4" IP AND PLUG, PLS 3519, OR AS NOTED.
- SET 3/4" IP AND PLUG, PLS 3519, OR AS NOTED.
- (C) CALCULATED
- (M) MEASURED
- (P) PROPORTIONED
- (R1) FIRST ADDITION TO KINGSBURY HEIGHTS, OFFICIAL RECORDS, DOUGLAS COUNTY, NEVADA, DOC. NO. 25944
- (R2) KINGSBURY HEIGHTS SUBDIVISION UNIT NO. 3
- (RAD) RADIAL BEARING

BASIS OF BEARING

THE BASIS OF BEARING FOR THIS SURVEY IS IDENTICAL TO THE WEST LINE OF THE FIRST ADDITION TO KINGSBURY HEIGHTS, OFFICIAL RECORDS, DOUGLAS COUNTY, NEVADA, DOCUMENT NO. 25944.

SURVEYORS CERTIFICATE

I, RONALD TURNER, A PROFESSIONAL LAND SURVEYOR REGISTERED IN THE STATE OF NEVADA, CERTIFY THAT:
 1. THIS IS A TRUE AND ACCURATE REPRESENTATION OF THE LANDS SURVEYED UNDER MY SUPERVISION AT THE INSTANCE OF **LEONARD KYLE**
 2. THE LANDS SURVEYED LIE WITHIN A PORTION OF SECTION 23, TOWNSHIP 13 NORTH, RANGE 18 EAST, M.D.M., AND THE SURVEY WAS COMPLETED ON SEPTEMBER 6, 2002.
 3. THIS PLAT COMPLIES WITH THE APPLICABLE STATE STATUTES AND ANY LOCAL ORDINANCE AND IS NOT IN CONFLICT WITH THE PROVISIONS OF NRS 278.010 TO 278.630, INCLUSIVE, AND SECTIONS 2 AND 3 OF CHAPTER 479 OF THE SIXTY-SIXTH LEGISLATIVE SESSION.
 4. THE MONUMENTS ARE OF THE CHARACTER SHOWN AND OCCUPY THE POSITIONS INDICATED.

Ronald W. Turner
 RONALD W. TURNER, P.L.S. 3519

COUNTY RECORDER'S CERTIFICATE

FILED FOR RECORD THIS 3rd DAY OF October, 2002 AT 06 MINUTES PAST 3 O'CLOCK P.M., IN BOOK 1092 OF OFFICIAL RECORDS AT PAGE 1268, DOCUMENT NUMBER 553794, RECORDED AT THE REQUEST OF Ronald Turner

Kathy Lee Jordan - Deputy
 DOUGLAS COUNTY RECORDER

ACAD FILE PROJECTS\02226_R0S.DWG SHEET 1 OF 1

RECORD OF SURVEY
FOR
 LOT 46, FIRST ADDITION TO
 KINGSBURY HEIGHTS
 PORTION OF SECTION 23, TOWNSHIP
 13 NORTH, RANGE 18 EAST, M.D.M.
 DOUGLAS COUNTY, NEVADA

SCALE: 1"=30'
 SEPTEMBER 2002