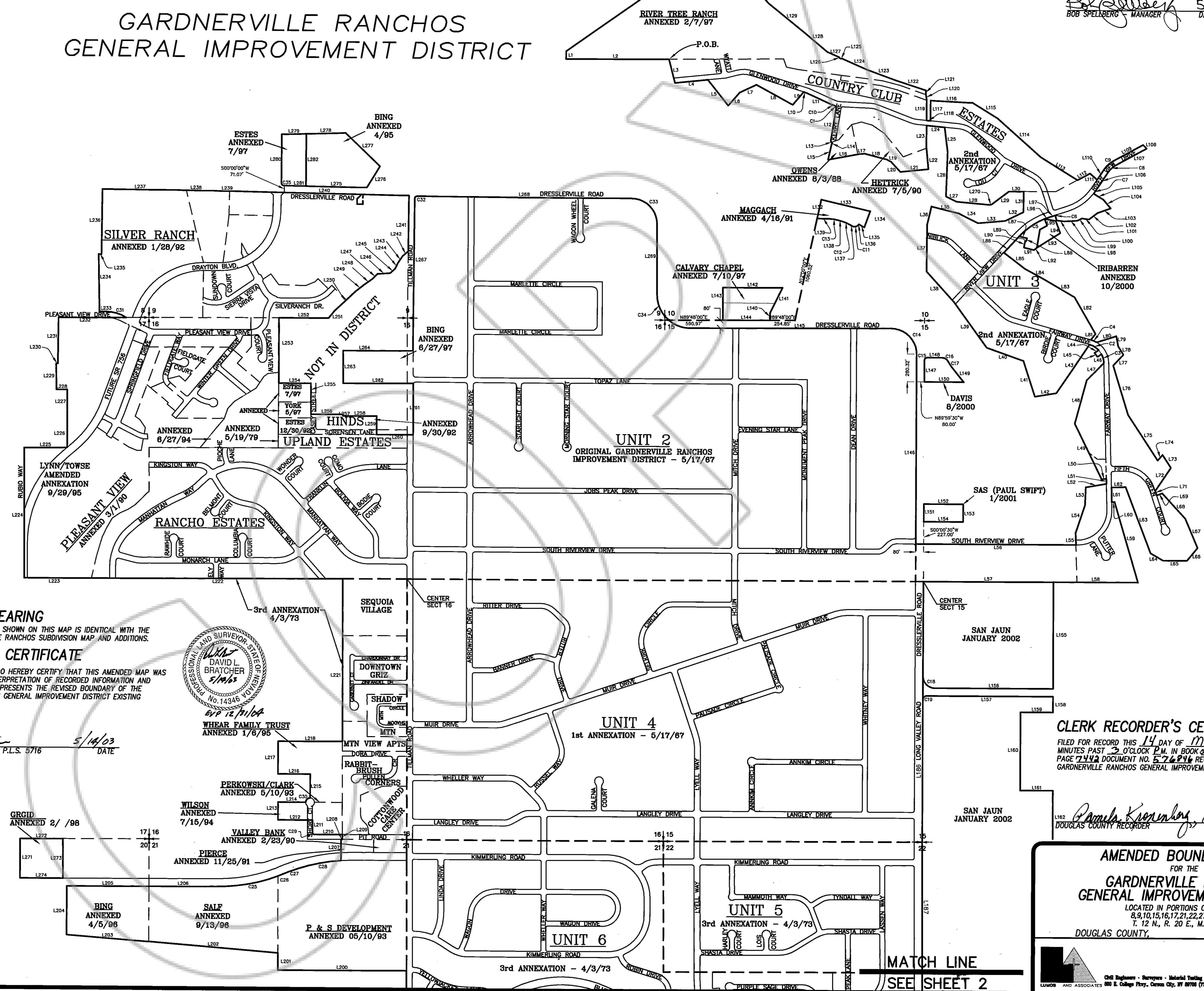


# GARDNERVILLE RANCHOS GENERAL IMPROVEMENT DISTRICT

**GARDNERVILLE RANCHOS  
GENERAL IMPROVEMENT DISTRICT**  
THE REVISED DISTRICT BOUNDARY SHOWN ON THIS MAP  
HAS BEEN REVIEWED AND IS HEREBY ACCEPTED.

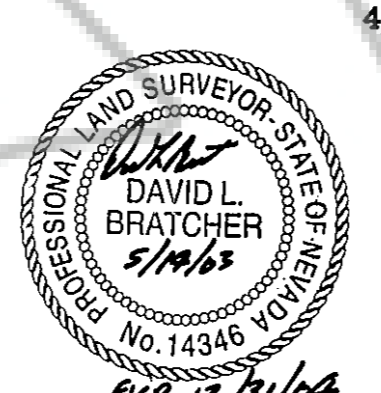
*Bob Spellberg* 5/14/03  
BOB SPELLBERG - MANAGER DATE

SCALE: 1" = 500'



**BASIS OF BEARING**  
THE BASIS OF BEARING SHOWN ON THIS MAP IS IDENTICAL WITH THE ORIGINAL GARDNERVILLE RANCHOS SUBDIVISION MAP AND ADDITIONS.

**SURVEYOR'S CERTIFICATE**  
I, DAVID L. BRATCHER, DO HEREBY CERTIFY THAT THIS AMENDED MAP WAS COMPILED FROM AN INTERPRETATION OF RECORDED INFORMATION AND THE MAP CORRECTLY REPRESENTS THE REVISED BOUNDARY OF THE GARDNERVILLE RANCHOS GENERAL IMPROVEMENT DISTRICT EXISTING THIS DATE.



*David L. Bratcher* 5/14/03  
DAVID L. BRATCHER, P.L.S. 5716 DATE

WHEAR FAMILY TRUST  
ANNEXED 1/8/95

PERKOWSKI/CLARK  
ANNEXED 5/10/93

VALLEY BANK  
ANNEXED 2/23/90

PIERCE  
ANNEXED 11/25/91

WILSON  
ANNEXED 7/15/94

PIERCE  
ANNEXED 11/25/91

PIERCE  
ANNEXED 11/25/91

**CLERK RECORDER'S CERTIFICATE**  
FILED FOR RECORD THIS 14 DAY OF May 2003, AT 45 MINUTES PAST 3 O'CLOCK P.M. IN BOOK 053 OF OFFICIAL RECORDS, PAGE 7442 DOCUMENT NO. 576846 RECORDED AT THE REQUEST OF GARDNERVILLE RANCHOS GENERAL IMPROVEMENT DISTRICT.

*Pamela Kronenby, Deputy*  
DOUGLAS COUNTY RECORDER

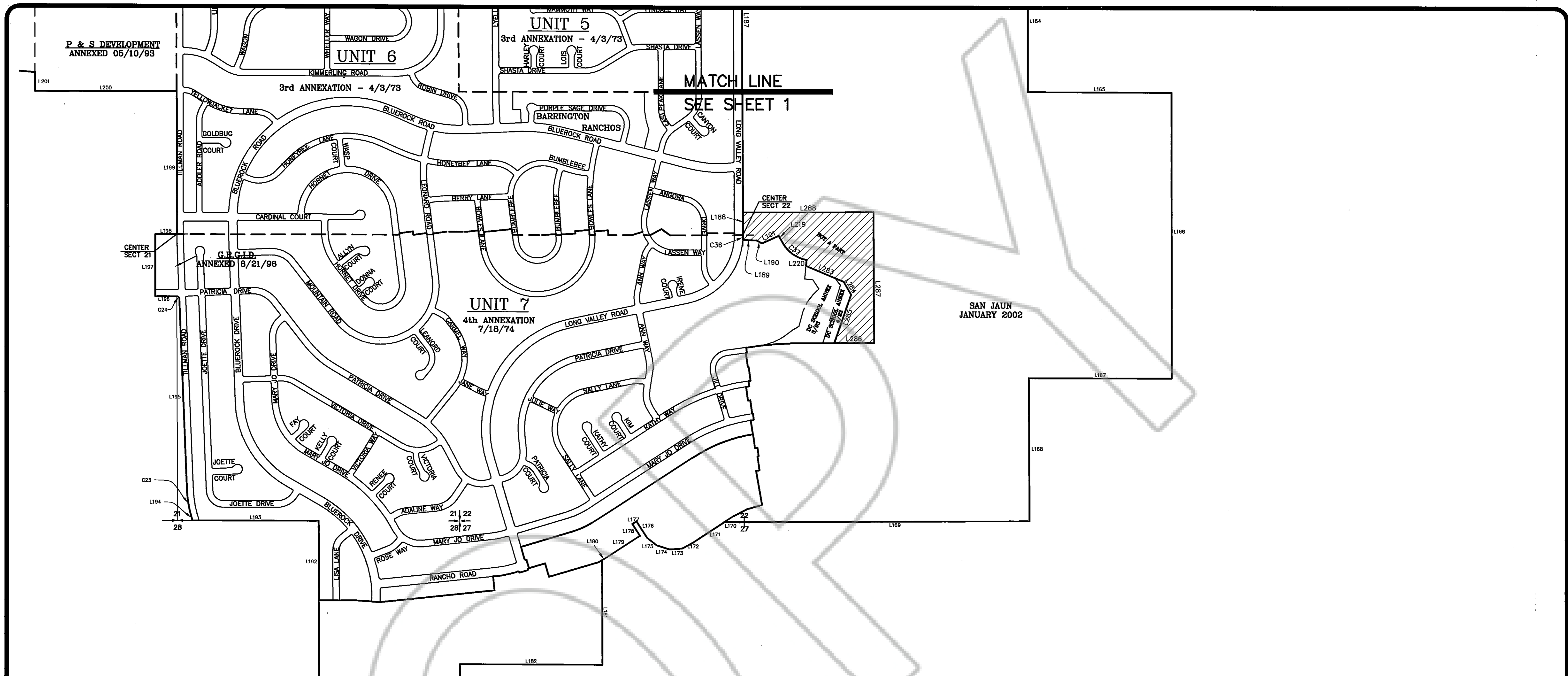
**AMENDED BOUNDARY MAP**  
FOR THE  
**GARDNERVILLE RANCHOS  
GENERAL IMPROVEMENT DISTRICT**  
LOCATED IN PORTIONS OF SECTIONS  
8,9,10,15,16,17,21,22,27, AND 28  
T. 12 N., R. 20 E., M.D.B. & M.  
DOUGLAS COUNTY, NEVADA

DATE: APRIL, 2003  
JOB NO.: 5719-006  
SHEET 1 OF 2

Chil Engineers - Surveyors - Material Testing  
LUMBO AND ASSOCIATES 800 E. College Pkwy., Carson City, NV 89701 (775) 885-1077

MATCH LINE  
SEE SHEET 2





LINE TABLE			LINE TABLE			LINE TABLE			LINE TABLE			LINE TABLE			LINE TABLE			CURVE TABLE				
LINE	LENGTH	BEARING	LINE	LENGTH	BEARING	LINE	LENGTH	BEARING	LINE	LENGTH	BEARING	LINE	LENGTH	BEARING	LINE	LENGTH	BEARING	CURVE	LENGTH	RADIUS	TANGENT	DELTA
L1	80.00	N00°09'24"W	L51	50.00	N01°29'30"W	L102	110.88	S52°49'29"W	L152	400.00	S89°59'30"E	L202	1317.23	N85°21'36"W	L252	505.34	S89°42'58"W	C1	28.66	20.00	17.42	82°06'12"
L2	1007.57	S89°50'36"W	L52	212.89	N79°51'27"E	L103	140.00	S70°01'22"W	L153	178.00	S00°00'30"W	L203	836.56	S85°25'36"E	L253	553.39	S00°09'38"E	C2	109.69	200.00	56.26	31°25'22"
L3	247.54	S14°25'00"E	L53	180.38	N02°07'30"E	L104	115.00	S40°50'28"E	L154	400.00	S89°59'30"E	L204	491.30	S00°11'46"W	L254	327.08	S89°42'30"W	C3	95.00	200.00	48.41	27°12'57"
L4	336.77	N84°21'14"E	L54	297.51	N18°37'07"E	L105	115.53	S57°50'45"E	L155	1087.17	S00°07'31"E	L205	834.87	S89°49'42"W	L255	315.34	N00°07'56"W	C4	65.19	250.00	32.78	14°56'27"
L5	333.65	S38°35'21"E	L55	123.11	S01°51'47"E	L106	229.86	S33°30'30"W	L156	1203.39	S89°57'04"E	L206	695.34	N89°49'53"E	L256	327.89	S89°42'30"W	C5	42.81	675.00	21.41	3°38'03"
L6	177.73	N41°34'39"E	L56	1627.66	S89°52'20"E	L107	359.51	S61°33'00"W	L157	1283.61	S89°57'04"E	L207	214.33	N00°10'30"W	L257	17.66	N00°06'25"W	C6	31.42	20.00	20.00	90°00'00"
L7	187.59	N84°51'39"E	L57	1321.03	N89°54'10"E	L108	52.30	S45°32'00"E	L158	158.28	S00°07'31"E	L208	13.12	N89°49'20"E	L258	342.92	S89°42'30"W	C7	37.48	525.00	18.75	4°05'25"
L8	421.00	S61°20'51"E	L58	858.98	N89°54'10"E	L109	344.15	N61°33'00"E	L159	331.01	S89°59'50"E	L209	50.00	S00°10'40"E	L259	190.00	N00°06'25"W	C8	97.88	200.00	49.94	28°02'30"
L9	172.31	N40°02'20"E	L59	850.00	N16°30'00"W	L110	129.86	N33°30'30"E	L160	794.80	N00°03'52"W	L210	284.58	S89°49'20"W	L260	371.23	N89°42'30"E	C9	122.35	250.00	62.43	28°02'30"
L10	30.64	N73°01'31"W	L60	28.81	S88°30'30"W	L111	96.83	S49°27'30"E	L161	331.48	N89°57'54"W	L211	124.38	N00°01'02"W	L261	524.40	N00°11'05"W	C10	37.12	275.00	18.59	7°44'03"
L11	277.43	N85°31'18"W	L61	148.33	S01°29'30"E	L112	145.00	N61°33'00"E	L162	530.99	N00°05'46"W	L212	351.29	N90°00'00"E	L262	714.24	S89°42'27"W	C11	68.26	46.38	42.00	84°19'31"
L12	339.66	S08°50'51"W	L62	144.37	S88°30'30"W	L113	440.00	N58°27'00"W	L163	1326.84	S89°56'10"E	L213	180.55	S00°11'09"E	L263	331.09	N00°02'53"W	C12	93.81	350.00	47.19	15°21'25"
L13	29.68	S31°28'09"E	L63	715.00	N21°00'00"W	L114	590.00	N48°27'00"W	L164	1283.37	S00°05'56"E	L214	281.82	N90°00'00"W	L264	709.93	N89°42'46"E	C13	85.85	350.00	43.14	14°03'14"
L14	6.49	S58°33'51"W	L64	150.00	N59°30'00"W	L115	295.00	N58°27'00"W	L165	1329.96	S89°53'01"E	L215	242.09	S00°01'06"E	L265	1547.28	N00°25'27"E	C14	409.35	260.00	260.95	90°12'30"
L15	166.04	S12°53'26"W	L65	240.00	N90°00'00"W	L116	428.68	N87°06'32"W	L166	2645.72	S00°05'05"E	L216	327.77	N89°48'03"E	L266	2185.04	S89°47'02"E	C15	39.27	25.00	25.00	90°00'00"
L16	321.00	N79°16'00"E	L66	170.00	S40°00'00"W	L117	205.91	N00°14'50"E	L167	1325.19	S89°57'40"E	L217	331.02	S00°12'14"E	L267	717.99	S00°15'00"E	C16	65.66	60.00	36.55	62°42'02"
L17	57.15	S84°59'16"W	L67	325.00	S23°00'00"E	L118	40.17	S84°29'30"E	L168	1324.35	S00°16'35"E	L218	655.54	S89°47'26"W	L268	18.00	S75°01'00"W	C17	65.78	325.00	33.00	11°35'49"
L18	232.68	N75°24'03"W	L68	345.00	S43°00'00"E	L119	204.08	N00°14'50"E	L169	2646.11	N89°47'16"E	L219	70.01	N28°59'08"E	L269	400.78	S00°06'51"E	C18	188.57	120.00	120.08	90°02'15"
L19	47.94	N61°35'41"W	L69	60.00	N71°30'30"E	L120	58.57	S08°25'00"E	L170	185.54	S89°57'18"E	L220	54.91	N04°46'00"E	L270	435.50	N89°48'02"E	C19	64.32	40.00	41.52	92°07'50"
L20	138.14	N43°15'04"W	L70	44.88	S18°20'30"E	L121	43.39	S00°06'27"E	L171	348.79	N56°58'00"E	L221	1655.48	S00°11'26"E	L271	401.01	S00°10'07"E	C20	222.81	930.00	111.99	134°04'06"
L21	286.83	S84°29'59"W	L71	285.54	N33°47'30"E	L122	328.27	S72°05'35"E	L172	112.65	N61°38'31"E	L222	2554.70	N89°45'31"E	L272	435.88	S89°49'58"W	C21	30.65	20.00	19.25	87°48'21"
L22	211.97	S05°34'17"E	L72	155.64	N33°21'14"W	L123	310.10	S89°42'24"E	L173	119.33	N68°11'24"E	L223	682.69	S89°45'31"W	L273	620.34	N89°02'58"W	C22	629.86	1760.00	318.33	20°30'17"
L23	232.79	S00°14'50"W	L73	75.00	S41°30'30"W	L124	269.94	S66°23'03"E	L174	119.10	S73°20'00"E	L224	1319.92	N00°18'53"W	L274	253.83	S31°42'52"W	C23	57.09	1760.00	28.55	151°31'1"
L24	184.98	S84°29'30"E	L74	553.18	S33°21'14"E	L125	20.64	N89°39'01"E	L175	119.10	S52°15'57"E	L225	436.79	N89°28'38"E	L275	486.65	S46°25'30"E	C24	52.91	1860.00	26.45	1°37'47"
L25	253.37	N07°15'38"W	L75	523.11	S17°00'00"E	L126	22.68	S44°41'00"E	L176	179.27	S33°02'00"E	L226	295.49	N00°05'27"W	L276	400.25	N88°19'22"E	C25	554.06	1860.00	279.09	17°04'02"
L26	120.00	N02°00'00"E	L76	150.99	N43°22'45"E	L127	125.15	S66°23'03"E	L177	457.73	N56°58'00"E	L227	296.87	N00°17'17"W	L277	249.92	S88°19'22"W	C26	31.47	20.00	20.06	90°09'38"
L27	120.00	N02°00'00"E	L77	100.18	N31°17'15"W	L128	290.62	S49°49'02"E	L178	130.00	N56°58'00"E	L228	426.18	S89°45'40"E	L278	45.26	S00°06'56"W	C27	70.69	44.57	43.02	90°04'06"
L28	341.71	N84°54'53"W	L78	105.99	N11°01'12"W	L129	486.53	S50°52'28"E	L179	382.10	N56°58'00"E	L229	264.00	N00°58'22"W	L279	225.12	N89°02'58"W	C28	629.86	1760.00	318.33	20°30'17"
L29	217.27	S53°01'00"W	L79	208.35	N72°13'04"E	L130	410.13	S41°47'28"E	L180	35.45	S61°12'30"W	L230	16.52	N88°50'07"E	L280	529.36	N00°06'56"E	C29	39.18	25.00	24.91	89°47'31"
L30	150.41	N89°48'30"E	L80	75.61	S38°31'26"W	L131	369.58	S33°19'15"E	L181	969.01	S00°12'46"E	L231	467.66	N00°34'31"E	L281	380.24	N67°09'03"W	C30	406.29	260.00	257.89	89°32'02"
L31	208.28	N00°11'30"E	L81	430.00	S30°00'00"E	L132	197.01	N12°00'00"E	L182	1323.25	N89°59'54"W	L232	688.85	N89°40'47"E	L282	138.00	N90°47'34"W	C31	533.77	340.00	339.70	89°57'00"
L32	204.69	N64°10'30"E	L82	370.00	S60°00'00"E	L133	512.46	S76°53'40"E	L183	1324.40	S00°10'27"E	L233	69.12	S89°41'10"W	L283	475.00	N19°16'28"E	C32	38.97	25.00	24.70	89°18'46"
L33	279.27	N84°57'30"E	L83	210.00	N76°35'40"W	L134	285.69	S20°22'53"W	L184	1307.59	S89°55'47"E	L234	582.32	N00°57'38"W	L284	370.23	S89°50'24"W	C33	41.33	640.00	20.67	341°59"
L34	219.20	S63°30'20"E	L84	270.00	S52°59'30"W	L135	64.36	N59°45'02"E	L185	193.75	N00°10'48"W	L235	273.86	S52°11'26"E	L285	990.72	S00°16'55"E	C34	284.32	323.90	152.05	50°17'39"
L35	284.94	S76°03'54"E	L85	227.49	N43°00'30"E	L136	8.48	S36°27'41"W	L186	1443.34	S00°10'48"W	L236	662.37	N00°38'42"E	L286	1211.36	S89°56'27"W					
L36	192.40	N13°08'20"E	L86	79.90	N77°14'50"W	L137	24.31	N59°12'34"W	L187	1326.24	N00°17'50"W	L237	766.61	S89°38'27"E								
L37	474.95	N00°28'53"E	L87	34.10	N12°49'50"E	L138	37.79	N74°33'57"W	L188	209.65	N00°16'49"W	L238	371.37	S89°10'49"E								
L38	416.53	N42°15'47"W	L88	9.83	S85°04'30"E	L139	130.32	N88°37'09"W	L189	128.60	N86°35'22"E	L239	259.27	S89°10'50"E								
L39	569.53	N36°07'01"W	L89	64.04	N11°47'40"E	L140	75.02	S00°15'00"E	L190	55.53	N62°10'16"W	L240	1720.78	S89°02'56"E								
L40	395.28	N44°39'59"E	L90	107.08	N76°35'40"W	L141	285.69	S28°39'07"W	L191	170.01	S66°02'00"W	L241	568.17	S00°27'13"W								
L41	381.83	N18°11'28"W	L91	36.19	N51°30'30"E	L142	606.83	N59°45'02"E	L192	735.00	N00°12'42"W	L242	74.73	S52°22'12"W								
L42	220.48	S80°37'28"W	L92	279.59	S57°42'10"W	L143	329.90	N00°10'29"W	L193	1168.87	S89°56'38"W	L243	87.10	S33°50'12"W								
L43	600.00	S34°00'00"W	L93	134.70	S20°25'00"E	L144	478.00	N89°48'00"E	L194	58.10	N16°04'00"W	L244	63.80	S25°22'12"W								
L44	50.00	S54°06'43"W	L94	114.21	S80°35'28"E	L145	2042.35	N89°48'00"E	L195	1783.58	N02°20'00"W	L245	68.60	S48°19'12"W								
L45	50.00	S35°53'17"E	L95	90.00	N72°00'30"E	L146	1929.84	S00°00'30"W	L196	200.81	S89°51'21"E	L246	128.40	S86°37'42"W								