

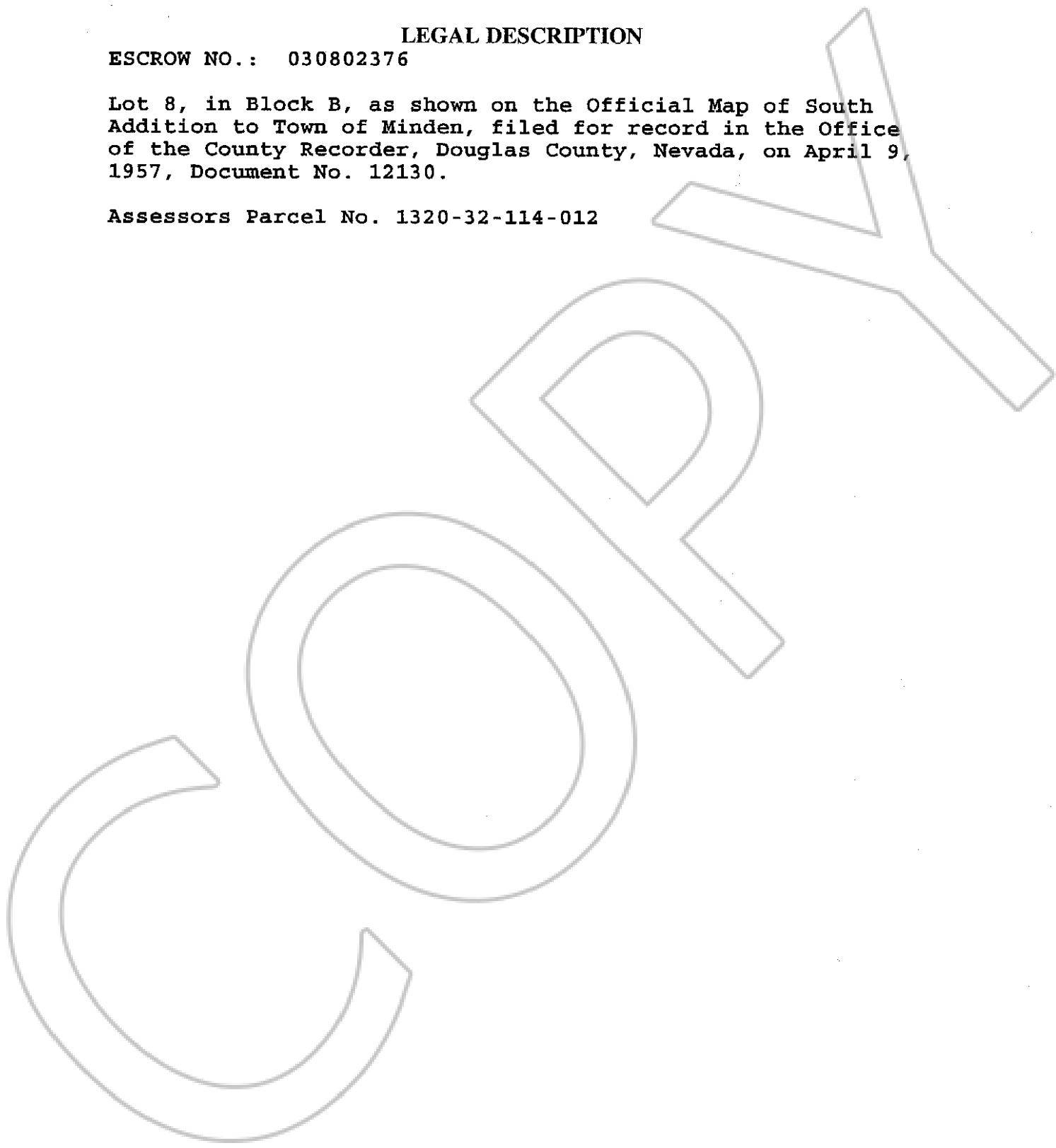
EXHIBIT "A"

LEGAL DESCRIPTION

ESCROW NO.: 030802376

Lot 8, in Block B, as shown on the Official Map of South Addition to Town of Minden, filed for record in the Office of the County Recorder, Douglas County, Nevada, on April 9, 1957, Document No. 12130.

Assessors Parcel No. 1320-32-114-012



0584531
BK0703PG13369