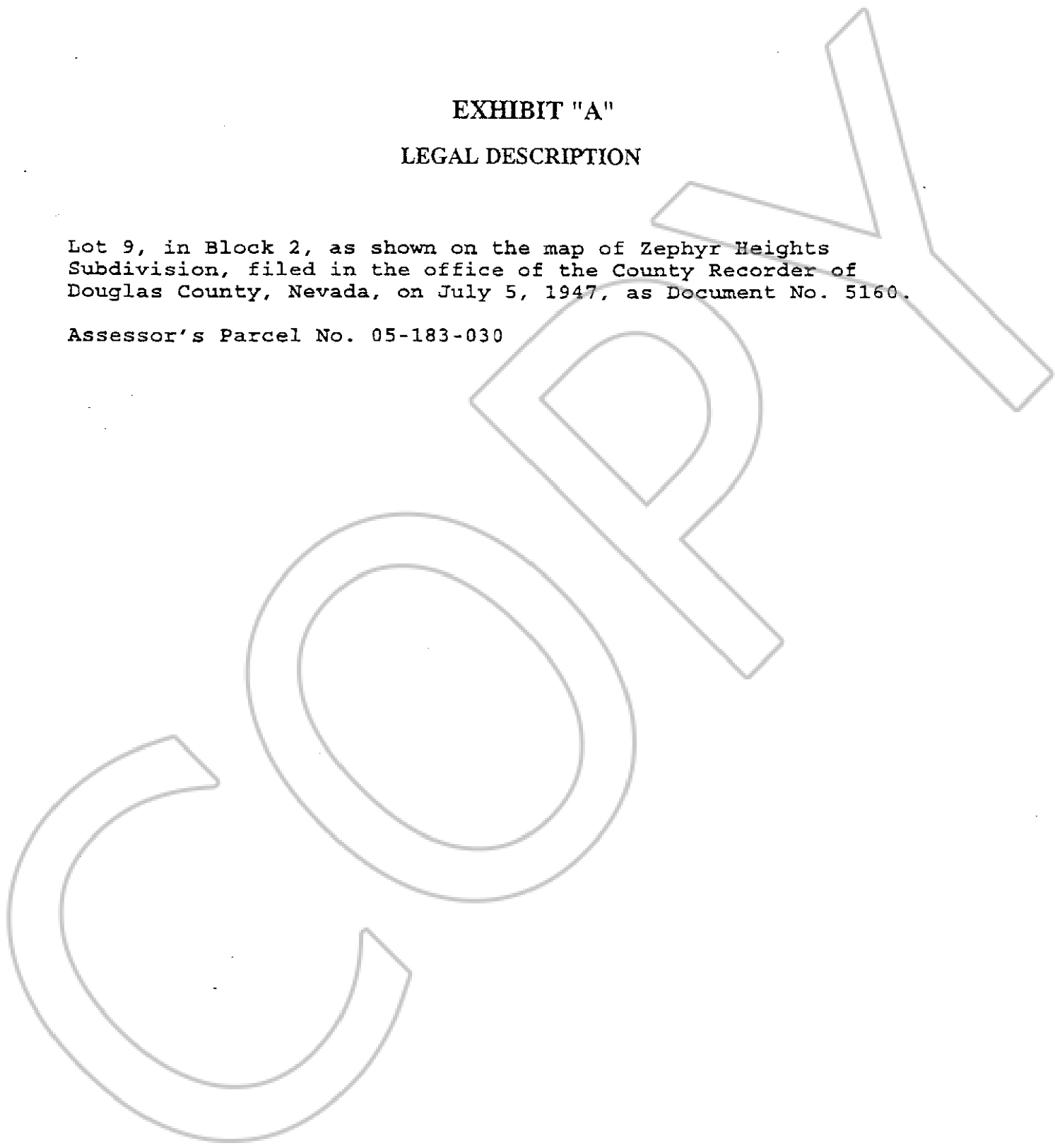




**EXHIBIT "A"**  
**LEGAL DESCRIPTION**

Lot 9, in Block 2, as shown on the map of Zephyr Heights  
Subdivision, filed in the office of the County Recorder of  
Douglas County, Nevada, on July 5, 1947, as Document No. 5160.

Assessor's Parcel No. 05-183-030



0588288  
BK0803PG16748