

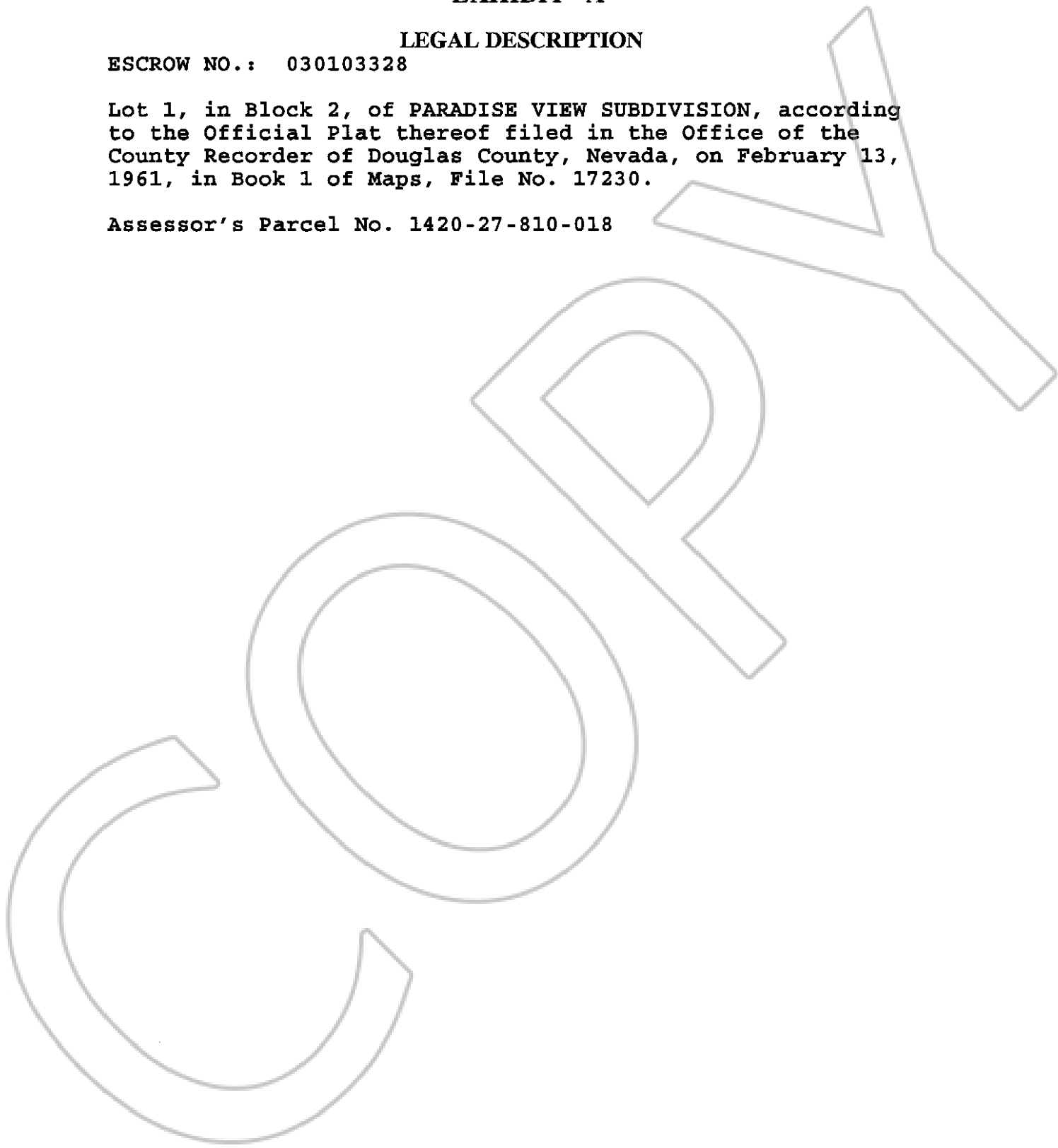
EXHIBIT "A"

LEGAL DESCRIPTION

ESCROW NO.: 030103328

Lot 1, in Block 2, of PARADISE VIEW SUBDIVISION, according to the Official Plat thereof filed in the Office of the County Recorder of Douglas County, Nevada, on February 13, 1961, in Book 1 of Maps, File No. 17230.

Assessor's Parcel No. 1420-27-810-018



0595120

BK1003PG14564