

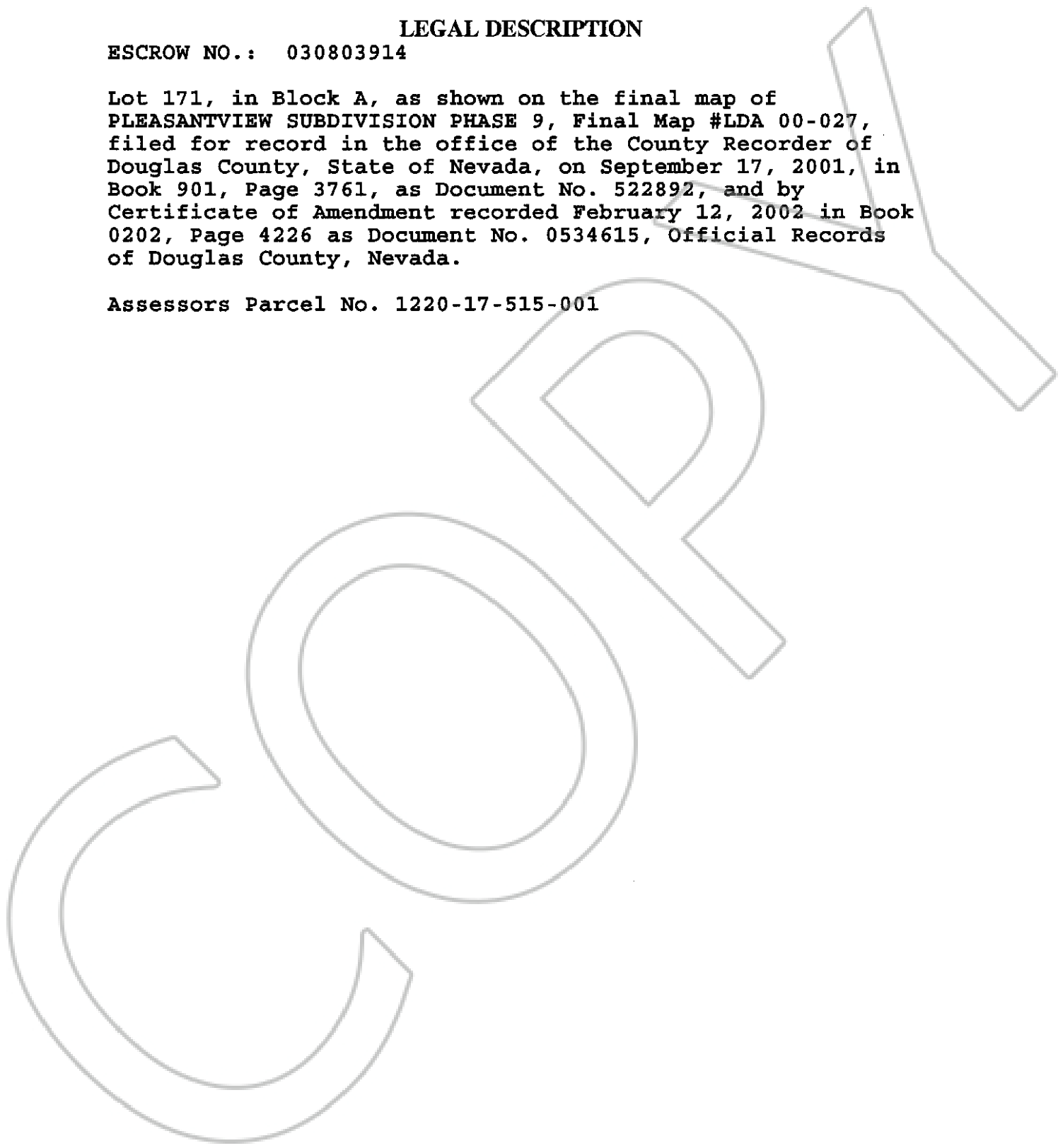
EXHIBIT "A"

LEGAL DESCRIPTION

ESCROW NO.: 030803914

Lot 171, in Block A, as shown on the final map of PLEASANTVIEW SUBDIVISION PHASE 9, Final Map #LDA 00-027, filed for record in the office of the County Recorder of Douglas County, State of Nevada, on September 17, 2001, in Book 901, Page 3761, as Document No. 522892, and by Certificate of Amendment recorded February 12, 2002 in Book 0202, Page 4226 as Document No. 0534615, Official Records of Douglas County, Nevada.

Assessors Parcel No. 1220-17-515-001



0602694

BK0104PG07488