

BASIS OF BEARINGS

THE BASIS OF BEARINGS OF THIS MAP IS THE SOUTH LINE OF LOT 24 OF A RECORD OF SURVEY MAP FOR RONALD D. BOMMARITO, DOCUMENT #521888, OFFICIAL RECORDS, DOUGLAS COUNTY, NEVADA. SAID LINE BEARS N88°38'02"E.

LEGEND

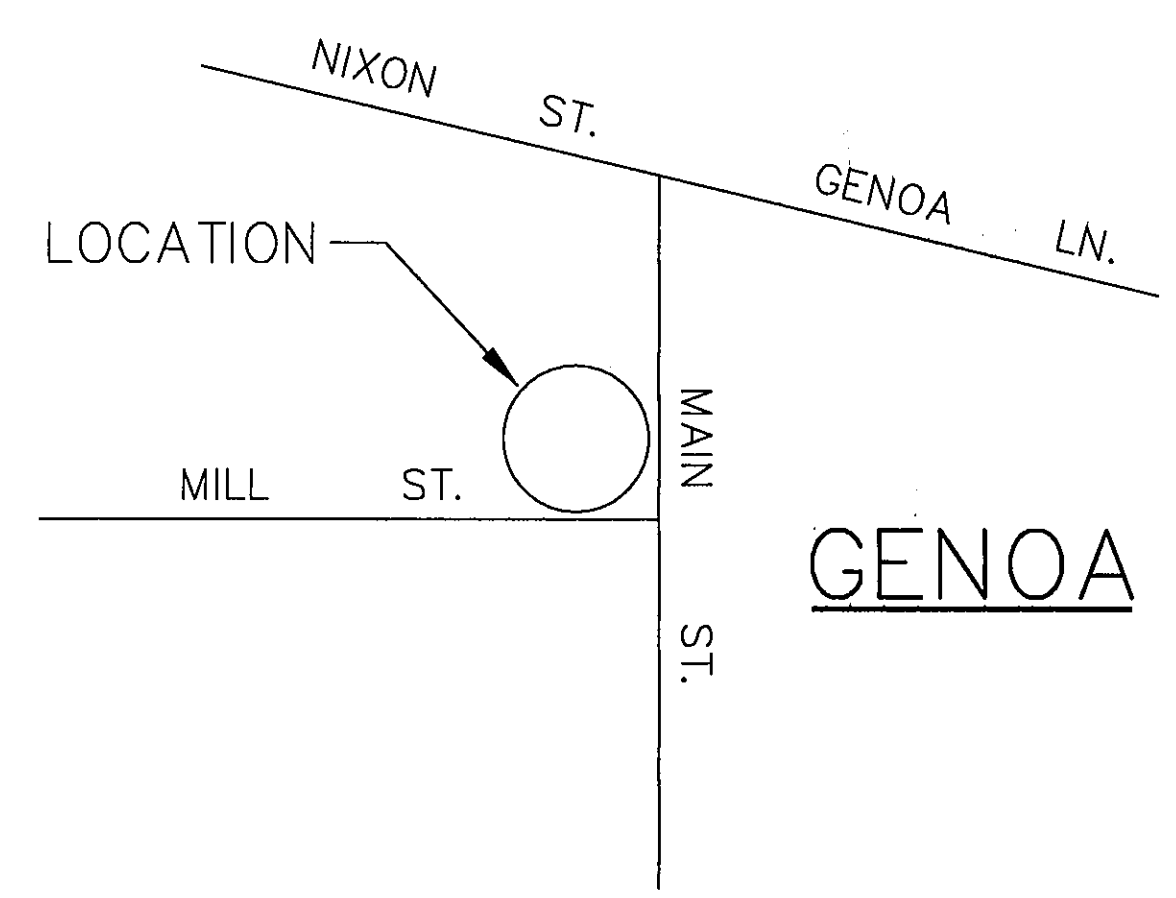
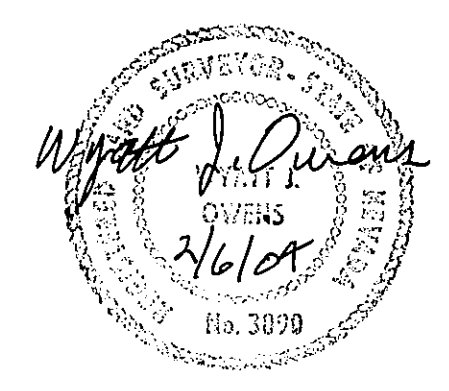
- SET 5/8" REBAR WITH PLASTIC CAP STAMPED PLS 3090.
- (R) RECORD OF SURVEY FOR RONALD D. BOMMARITO, DOCUMENT #521888, OFFICIAL RECORDS, DOUGLAS COUNTY, NEVADA.
- (R1) BOUNDARY LINE ADJUSTMENT MAP, DOCUMENT #413588, OFFICIAL RECORDS, DOUGLAS COUNTY, NEVADA.
- (R2) RECORD OF SURVEY FOR RONALD DEAN, CAROL & NICOLE BOMMARITO, DOCUMENT #317022, OFFICIAL RECORDS, DOUGLAS COUNTY, NEVADA.

SURVEYOR'S CERTIFICATE

I, WYATT J. OWENS, A PROFESSIONAL LAND SURVEYOR REGISTERED IN THE STATE OF NEVADA CERTIFY THAT:

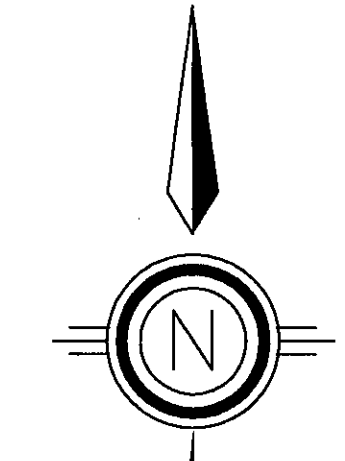
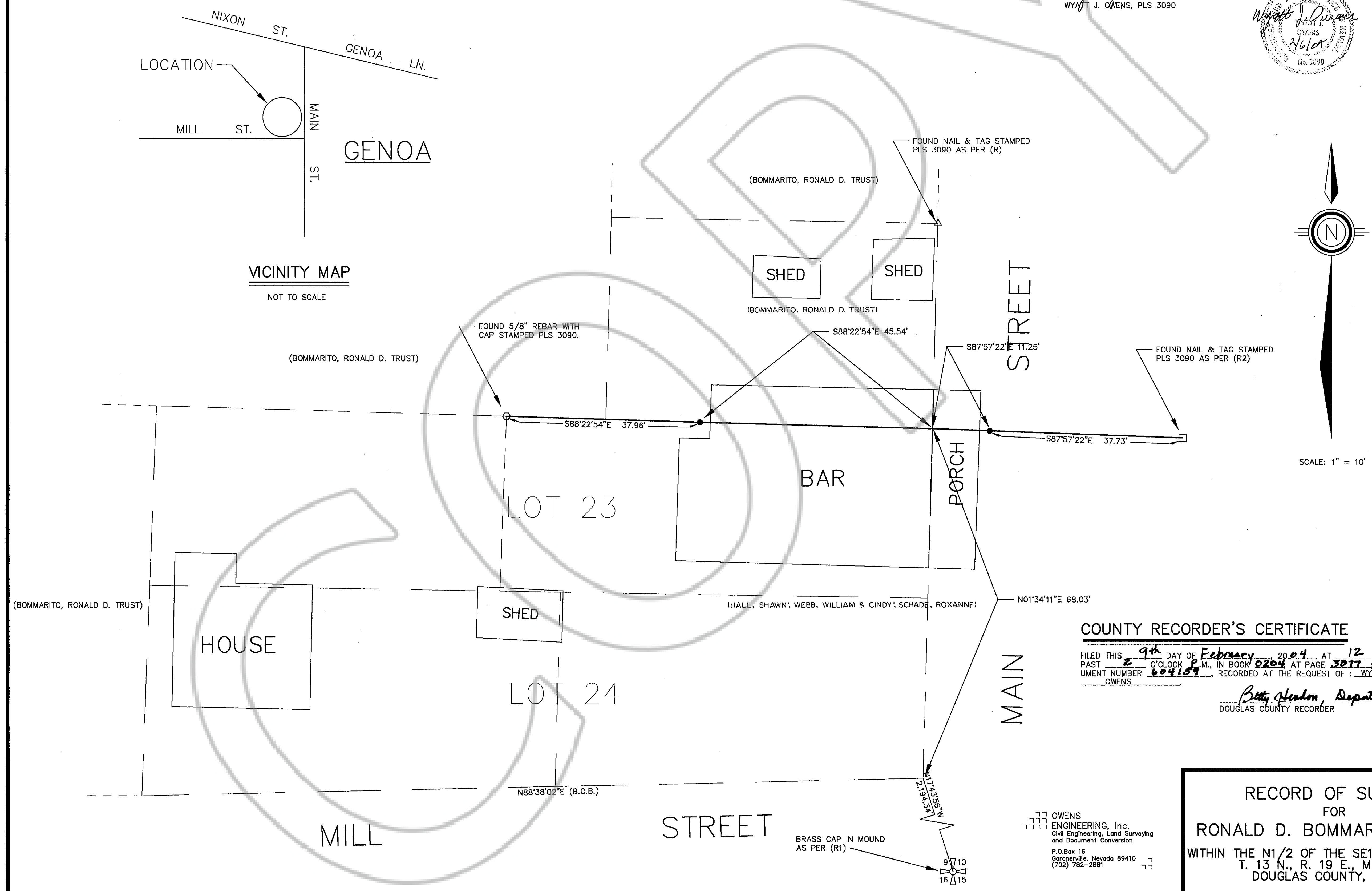
1. THIS IS A TRUE AND ACCURATE REPRESENTATION OF THE LANDS SURVEYED UNDER MY SUPERVISION AT THE INSTANCE OF RON BOMMARITO.
2. THE LAND SHOWN LIES WITHIN SECTION 9 OF T. 13 N., R. 19 E., M.D.B. & M. AND THE SURVEY WAS COMPLETED ON FEBRUARY 6, 2004.
3. THIS MAP COMPLIES WITH THE APPLICABLE STATE STATUTES AND LOCAL ORDINANCES.
4. THE MONUMENTS ARE OF THE CHARACTER SHOWN AND OCCUPY THE POSITIONS INDICATED.

Wyatt J. Owens
 WYATT J. OWENS, PLS 3090



VICINITY MAP

NOT TO SCALE



SCALE: 1" = 10'

COUNTY RECORDER'S CERTIFICATE

FILED THIS 9th DAY OF February, 2004 AT 12 MINUTES PAST 2 O'CLOCK P.M. IN BOOK 0204 AT PAGE 3377; DOCUMENT NUMBER 604159, RECORDED AT THE REQUEST OF: WYATT J. OWENS

Betty Henderson, Deputy
 DOUGLAS COUNTY RECORDER

SHEET 1 OF 1

RECORD OF SURVEY FOR RONALD D. BOMMARITO, TRUST
 WITHIN THE N1/2 OF THE SE1/4 OF SECTION 9, T. 13 N., R. 19 E., M.D.B. & M. DOUGLAS COUNTY, NEVADA

OWENS ENGINEERING, Inc.
 Civil Engineering, Land Surveying and Document Conversion
 P.O. Box 16
 Gardnerville, Nevada 89410
 (702) 782-2881