

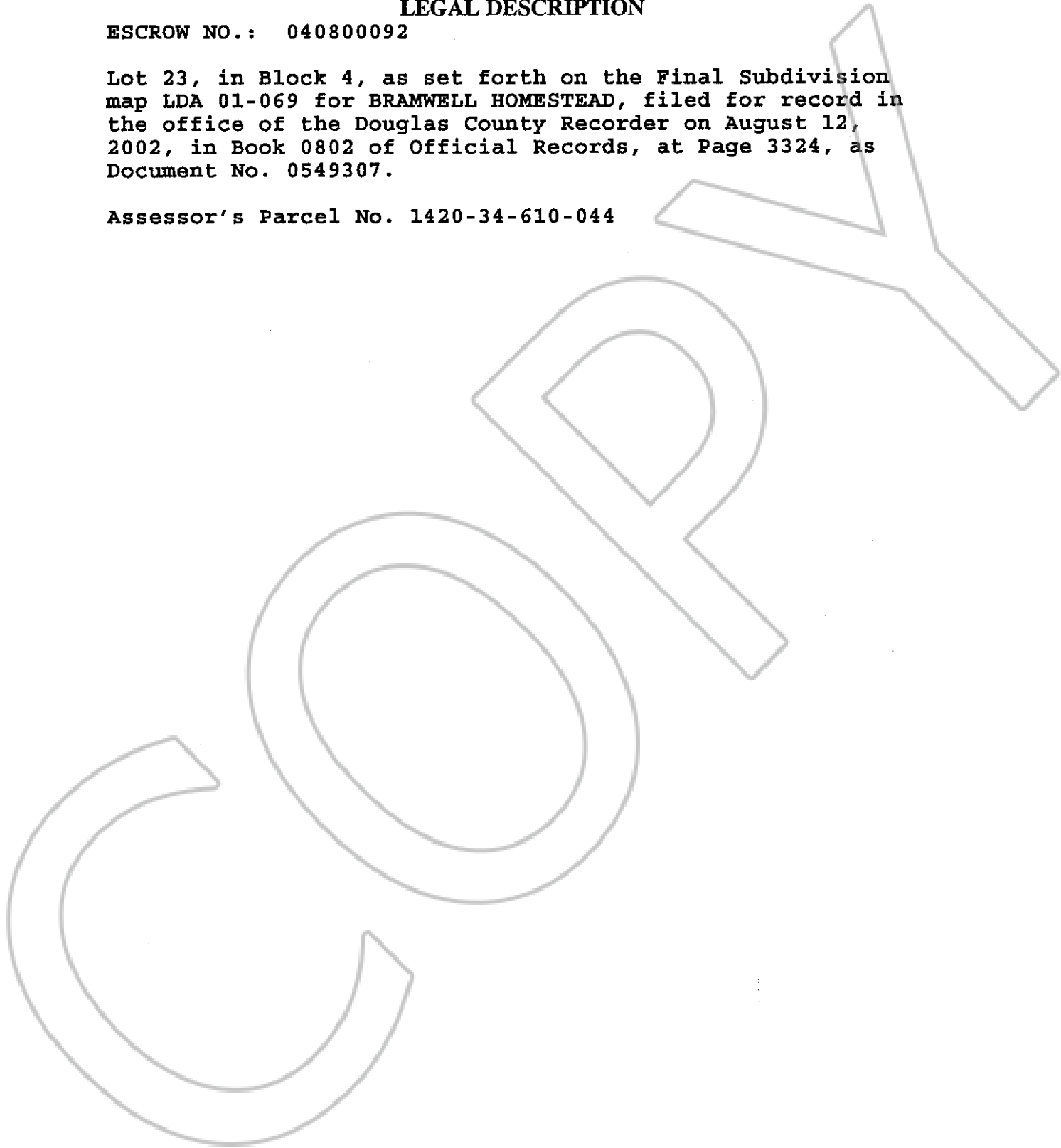
EXHIBIT "A"

LEGAL DESCRIPTION

ESCROW NO.: 040800092

Lot 23, in Block 4, as set forth on the Final Subdivision map LDA 01-069 for BRAMWELL HOMESTEAD, filed for record in the office of the Douglas County Recorder on August 12, 2002, in Book 0802 of Official Records, at Page 3324, as Document No. 0549307.

Assessor's Parcel No. 1420-34-610-044



0605499

BK0204PG10271