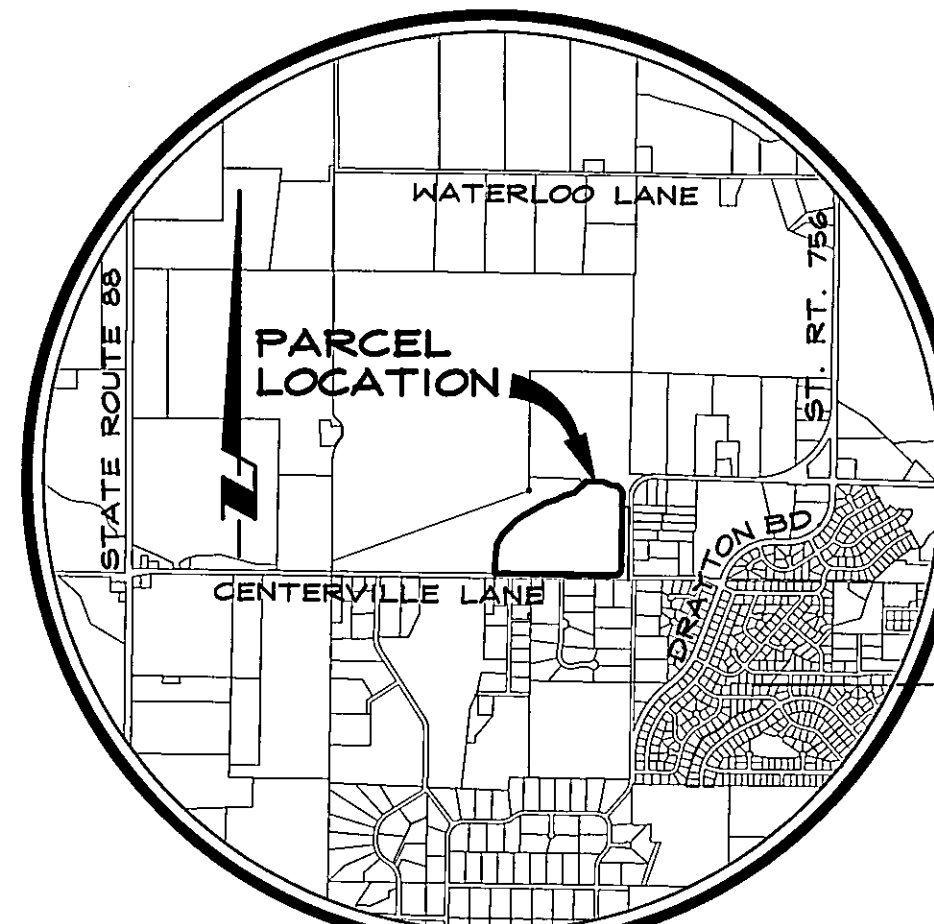
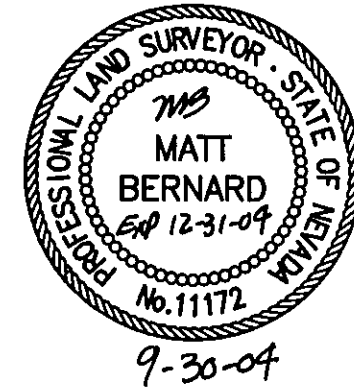


SURVEYOR'S CERTIFICATE

- I, MATT BERNARD, A PROFESSIONAL LAND SURVEYOR LICENSED IN THE STATE OF NEVADA, CERTIFY THAT:
- 1) A FIELD SURVEY OF THE BOUNDARIES OF THE AFFECTED PARCELS HAS BEEN PERFORMED BY ME OR UNDER MY SUPERVISION AT THE INSTANCE OF CHRIS EMMETT HELLWINKEL.
 - 2) THIS PLAT IS A TRUE AND ACCURATE REPRESENTATION OF THE LANDS SURVEYED.
 - 3) THE LANDS SURVEYED LIE WITHIN PORTIONS OF THE SOUTHWEST 1/4 AND THE SOUTHEAST 1/4 OF SECTION 8, T.12N., R.20E., M.D.M. AND THE SURVEY WAS COMPLETED ON 9-30-04.
 - 4) THIS PLAT IS NOT IN CONFLICT WITH THE PROVISIONS OF NRS 278.01 THROUGH NRS 278.630 AND COMPLIES WITH ALL APPLICABLE STATE STATUTES AND ANY LOCAL ORDINANCES.

Matt Bernard
MATT BERNARD, P.L.S. 11172



VICINITY MAP
NO SCALE

GARDNERVILLE RANCHOS GENERAL IMPROVEMENT DISTRICT

THE PLAT SHOWN HEREON HAS BEEN REVIEWED AND ACCEPTED BY THE GARDNERVILLE RANCHOS GENERAL IMPROVEMENT DISTRICT.

Bob Spellberg
BOB SPELLBERG, DISTRICT MANAGER
GARDNERVILLE RANCHOS GENERAL IMPROVEMENT DISTRICT

OWNER'S CERTIFICATE

WE, CHRIS EMMETT HELLWINKEL AND VALREE HELLWINKEL, ARE THE OWNERS OF THE LAND SHOWN ON THIS ANNEXATION MAP AND WE HEREBY REQUEST ANNEXATION OF THIS PROPERTY TO THE GARDNERVILLE RANCHOS GENERAL IMPROVEMENT DISTRICT.

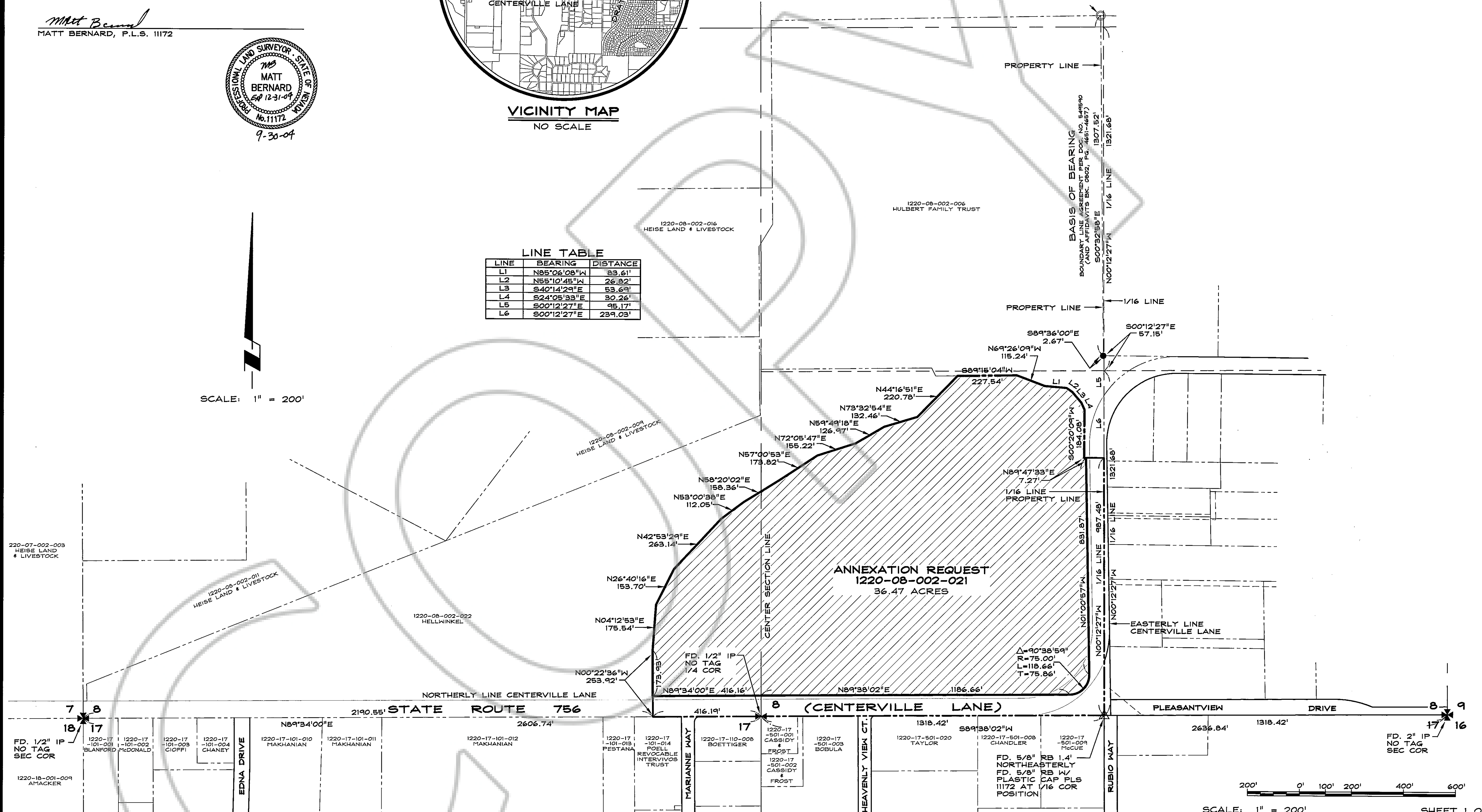
Chris Emmett Hellwinkel
CHRIS EMMETT HELLWINKEL
A.P.N. 1220-08-002-021

Valree Hellwinkel
VALREE HELLWINKEL
A.P.N. 1220-08-002-021

LINE TABLE

LINE	BEARING	DISTANCE
L1	N85°06'08"W	83.61'
L2	N55°10'45"W	26.82'
L3	S40°14'29"E	53.69'
L4	S24°05'33"E	30.26'
L5	S00°12'27"E	95.17'
L6	S00°12'27"E	239.03'

SCALE: 1" = 200'



LEGEND

- ✱ FOUND SECTION CORNER AS NOTED
- ✱ FOUND 1/4 CORNER AS NOTED
- FOUND 5/8" REBAR WITH PLASTIC CAP PLS 6899
- ▲ FOUND 5/8" REBAR WITH PLASTIC CAP PLS 11172
- FOUND 3" STEEL PIPE AS NOTED

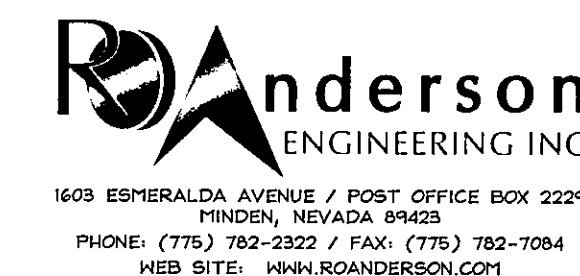
BASIS OF BEARING

S00°32'55"E - WEST LINE OF PARCEL 1 AS SHOWN ON THE RECORD OF SURVEY FOR JAMES A. AND GERALDINE LAWRENCE NEVADA TRUST ETAL RECORDED AUGUST 16, 2002 AS DOCUMENT NO. 549590.

RECORDER'S CERTIFICATE

FILED FOR RECORD THIS 11th DAY OF October, 2004, AT 28 MINUTES PAST 8 O'CLOCK A.M., IN BOOK 1004 OF OFFICIAL RECORDS, AT PAGE 3461, DOCUMENT NO. 626221. RECORDED AT THE REQUEST OF CHRIS EMMETT HELLWINKEL.

Barbara J. Clark
Barbara J. Clark, Deputy
DOUGLAS COUNTY RECORDER



SCALE: 1" = 200' SHEET 1 OF 1

ANNEXATION MAP
FOR
CHRIS AND VALREE HELLWINKEL

TO
GARDNERVILLE RANCHOS GENERAL IMPROVEMENT DISTRICT
LOCATED WITHIN PORTIONS OF THE SW1/4 AND SE1/4, SECTION 8, T.12N., R.20E., M.D.M.
DOUGLAS COUNTY, NEVADA
37106-04
37106ANNEX.dwg 08/04/04