

EXHIBIT "A"

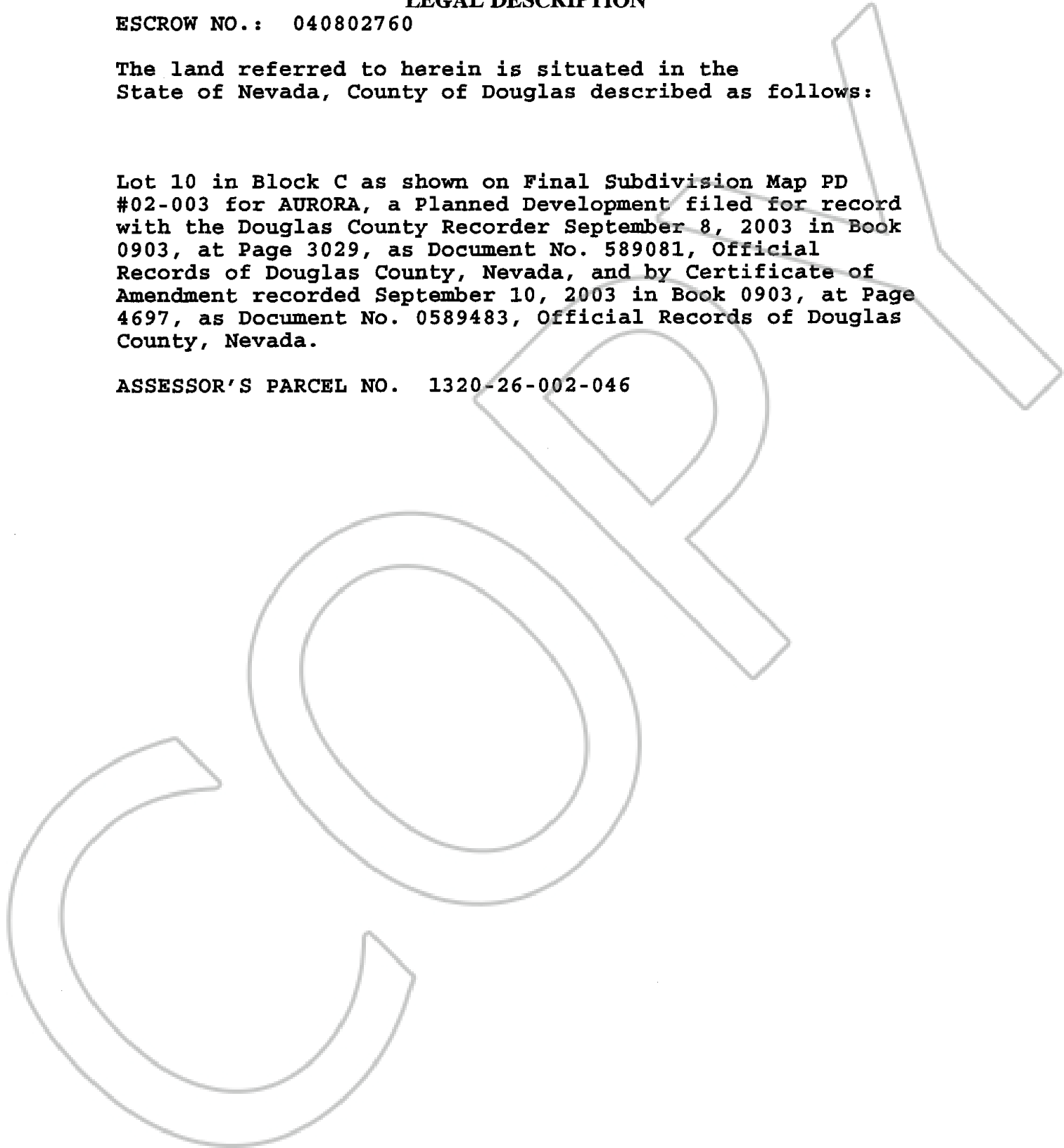
LEGAL DESCRIPTION

ESCROW NO.: 040802760

The land referred to herein is situated in the State of Nevada, County of Douglas described as follows:

Lot 10 in Block C as shown on Final Subdivision Map PD #02-003 for AURORA, a Planned Development filed for record with the Douglas County Recorder September 8, 2003 in Book 0903, at Page 3029, as Document No. 589081, Official Records of Douglas County, Nevada, and by Certificate of Amendment recorded September 10, 2003 in Book 0903, at Page 4697, as Document No. 0589483, Official Records of Douglas County, Nevada.

ASSESSOR'S PARCEL NO. 1320-26-002-046



**0630041
BK1104PG10350**