

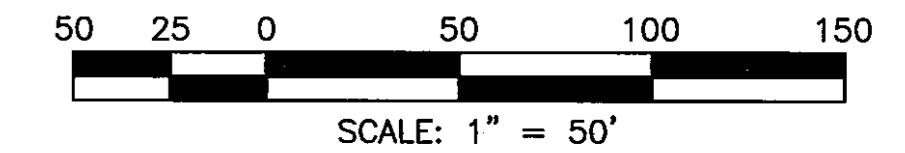
SURVEYOR'S CERTIFICATE:

I, DAVID D. WINCHELL, A PROFESSIONAL LAND SURVEYOR REGISTERED IN THE STATE OF NEVADA, CERTIFY THAT:

1. THIS PLAT REPRESENTS THE RESULTS OF A SURVEY CONDUCTED UNDER MY SUPERVISION AT THE INSTANCE OF K & S PROPERTIES, LLC
2. THE LANDS SURVEYED LIE WITHIN A PORTION OF SECTION 30, TOWNSHIP 13 NORTH, RANGE 20 EAST, M.D.B.&M. AND THE SURVEY WAS COMPLETED ON NOVEMBER 22, 2004.
3. THIS PLAT COMPLIES WITH APPLICABLE STATUTES OF THIS STATE AND ANY LOCAL ORDINANCES IN EFFECT ON THE DATE THAT THE SURVEY WAS CONDUCTED IN ACCORDANCE WITH CHAPTER 625 OF THE NEVADA ADMINISTRATIVE CODE.
4. THE MONUMENTS DEPICTED ON THE PLAT ARE OF THE CHARACTER SHOWN, OCCUPY THE POSITIONS INDICATED, AND ARE OF SUFFICIENT DURABILITY.
5. THIS RECORD OF SURVEY IS NOT IN CONFLICT WITH THE REQUIREMENTS OF NRS 278.010 TO 278.630, INCLUSIVE.

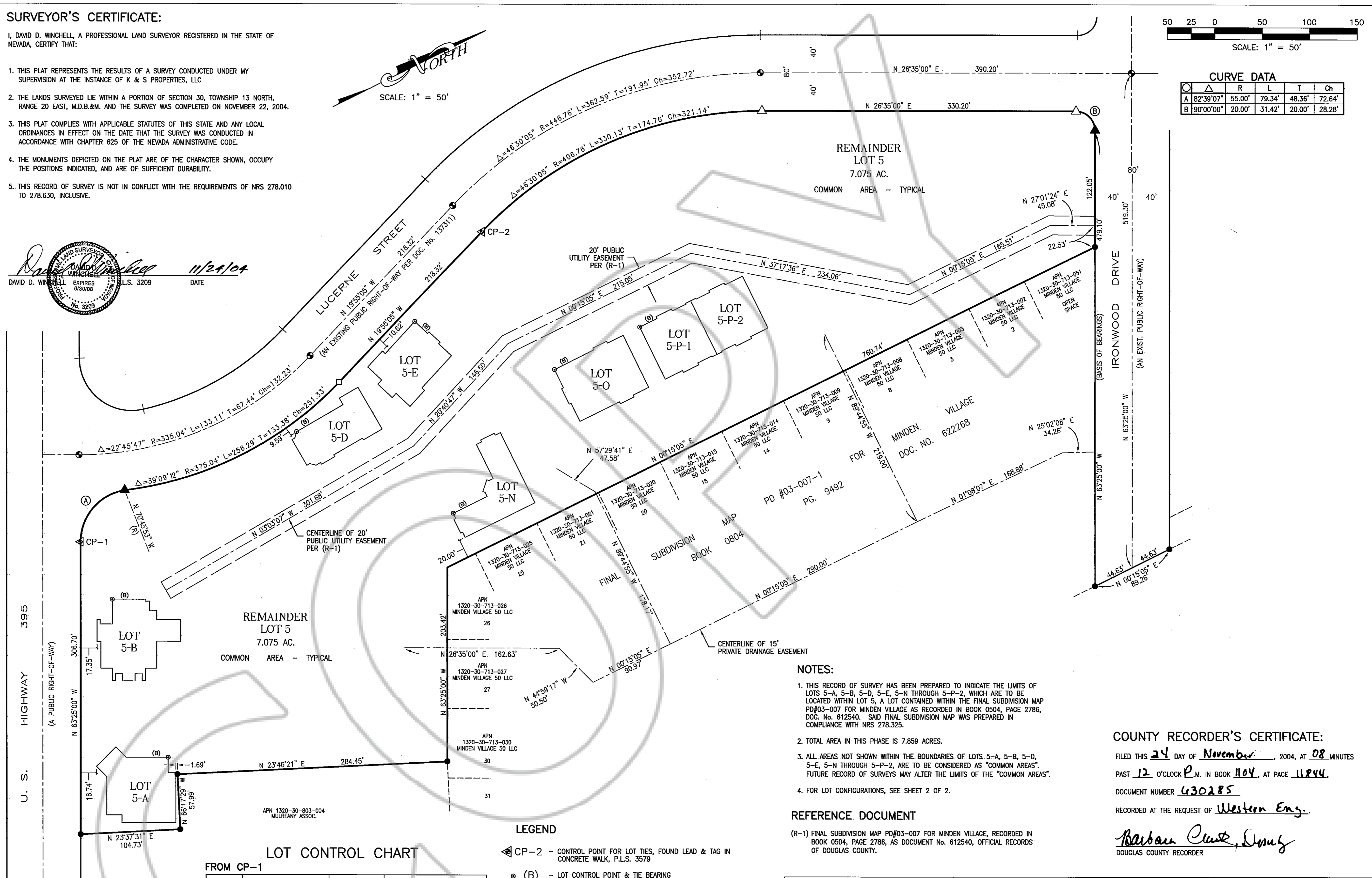
DAVID D. WINCHELL
 11/24/04
 DATE
 P.L.S. 3209
 EXPIRES 03/30/08
 No. 9209

SCALE: 1" = 50'



CURVE DATA

Curve	R	L	T	Ch	
A	82.39'07"	55.00'	79.34'	48.36'	72.64'
B	90.00'00"	20.00'	31.42'	20.00'	28.28'



LOT CONTROL CHART

FROM CP-1

LOT No.	TIE BEARING	TIE DISTANCE	BLDG. CONTROL BEARING (B)
5-A	S. 85°35'13" E.	243.67'	N. 26°33'19" E.
5-B	N. 87°29'33" E.	68.64'	N. 26°35'24" E.
5-D	N. 00°29'31" W.	255.10'	N. 03°39'35" W.

FROM CP-2

LOT No.	TIE BEARING	TIE DISTANCE	BLDG. CONTROL BEARING (B)
5-E	S. 26°42'26" E.	118.25'	N. 20°41'14" W.
5-N	S. 57°34'57" E.	297.36'	N. 00°15'08" E.
5-O	N. 88°40'28" E.	163.62'	N. 00°15'31" E.
5-P	N. 57°39'15" E.	194.14'	N. 00°17'29" E.

LEGEND

- CP-2 - CONTROL POINT FOR LOT TIES, FOUND LEAD & TAG IN CONCRETE WALK, P.L.S. 3579
- (B) - LOT CONTROL POINT & TIE BEARING (SEE LOT CONTROL CHART HEREON)
- - INDICATES FOUND 5/8" REBAR AND CAP, NO TAG.
- - INDICATES FOUND 5/8" REBAR AND CAP, P.L.S. 3209
- ▲ - INDICATES FOUND LEAD & TAG IN CONC. WALK, P.L.S. 3579
- △ - INDICATES FOUND LEAD & TAG IN CONC. WALK, P.L.S. 3209
- ⊙ - INDICATES FOUND WELL MONUMENT WITH BRASS CAP, R.L.S. 6304.

BASIS OF BEARINGS

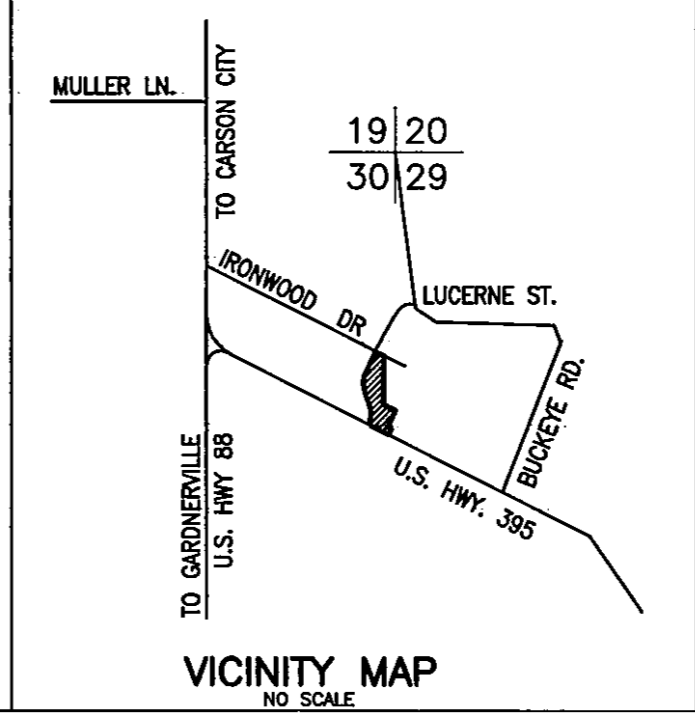
THE BEARING N 63°25'00" W FOR THE SOUTH-WESTERLY RIGHT-OF-WAY LINE OF IRONWOOD DRIVE AS SHOWN PER RECORD OF SURVEY IN SUPPORT OF A BOUNDARY LINE ADJUSTMENT, DOCUMENT NUMBER 411078, WAS USED AS THE BASIS OF BEARING FOR THIS MAP.

NOTES:

1. THIS RECORD OF SURVEY HAS BEEN PREPARED TO INDICATE THE LIMITS OF LOTS 5-A, 5-B, 5-D, 5-E, 5-N THROUGH 5-P-2, WHICH ARE TO BE LOCATED WITHIN LOT 5, A LOT CONTAINED WITHIN THE FINAL SUBDIVISION MAP PD#03-007 FOR MINDEN VILLAGE AS RECORDED IN BOOK 0504, PAGE 2786, DOC. NO. 612540. SAID FINAL SUBDIVISION MAP WAS PREPARED IN COMPLIANCE WITH NRS 278.325.
2. TOTAL AREA IN THIS PHASE IS 7.859 ACRES.
3. ALL AREAS NOT SHOWN WITHIN THE BOUNDARIES OF LOTS 5-A, 5-B, 5-D, 5-E, 5-N THROUGH 5-P-2, ARE TO BE CONSIDERED AS "COMMON AREAS". FUTURE RECORD OF SURVEYS MAY ALTER THE LIMITS OF THE "COMMON AREAS".
4. FOR LOT CONFIGURATIONS, SEE SHEET 2 OF 2.

REFERENCE DOCUMENT

(R-1) FINAL SUBDIVISION MAP PD#03-007 FOR MINDEN VILLAGE, RECORDED IN BOOK 0504, PAGE 2786, AS DOCUMENT No. 612540, OFFICIAL RECORDS OF DOUGLAS COUNTY.



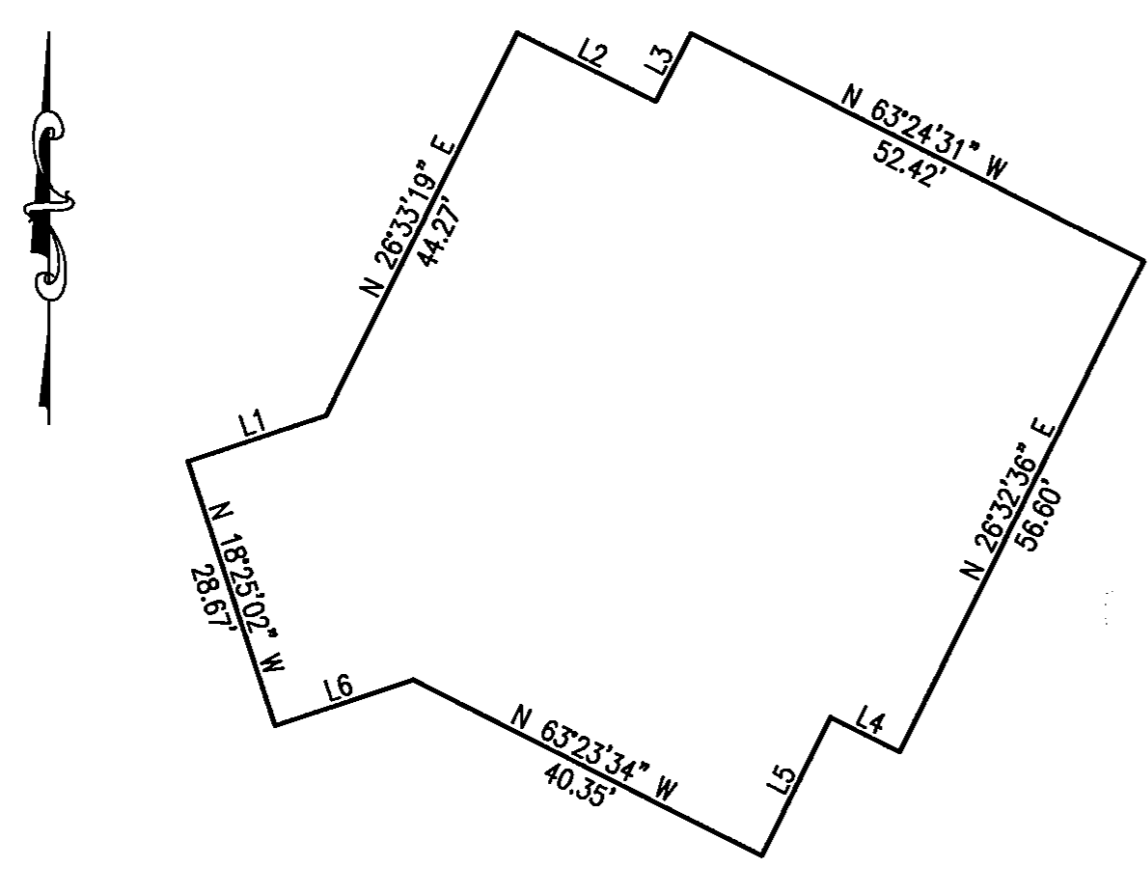
COUNTY RECORDER'S CERTIFICATE:

FILED THIS 24 DAY OF November, 2004, AT 08 MINUTES PAST 12 O'CLOCK P.M. IN BOOK 1104, AT PAGE 11844.
 DOCUMENT NUMBER 430285
 RECORDED AT THE REQUEST OF Western Eng.
Barbara Clark, Deputy
 DOUGLAS COUNTY RECORDER

RECORD OF SURVEY # 1
 FOR
MINDEN VILLAGE
 A PLANNED UNIT DEVELOPMENT

BEING A DIVISION OF PARCEL 5 OF THE FINAL SUBDIVISION MAP PD#03-007 FOR MINDEN VILLAGE, RECORDED IN BOOK 0504, PAGE 2786, AS DOC. #612540 LOCATED WITHIN A PORTION OF THE EAST 1/2 OF SECTION 30, TOWNSHIP 13 NORTH, RANGE 20 EAST, M.D.B. & M.

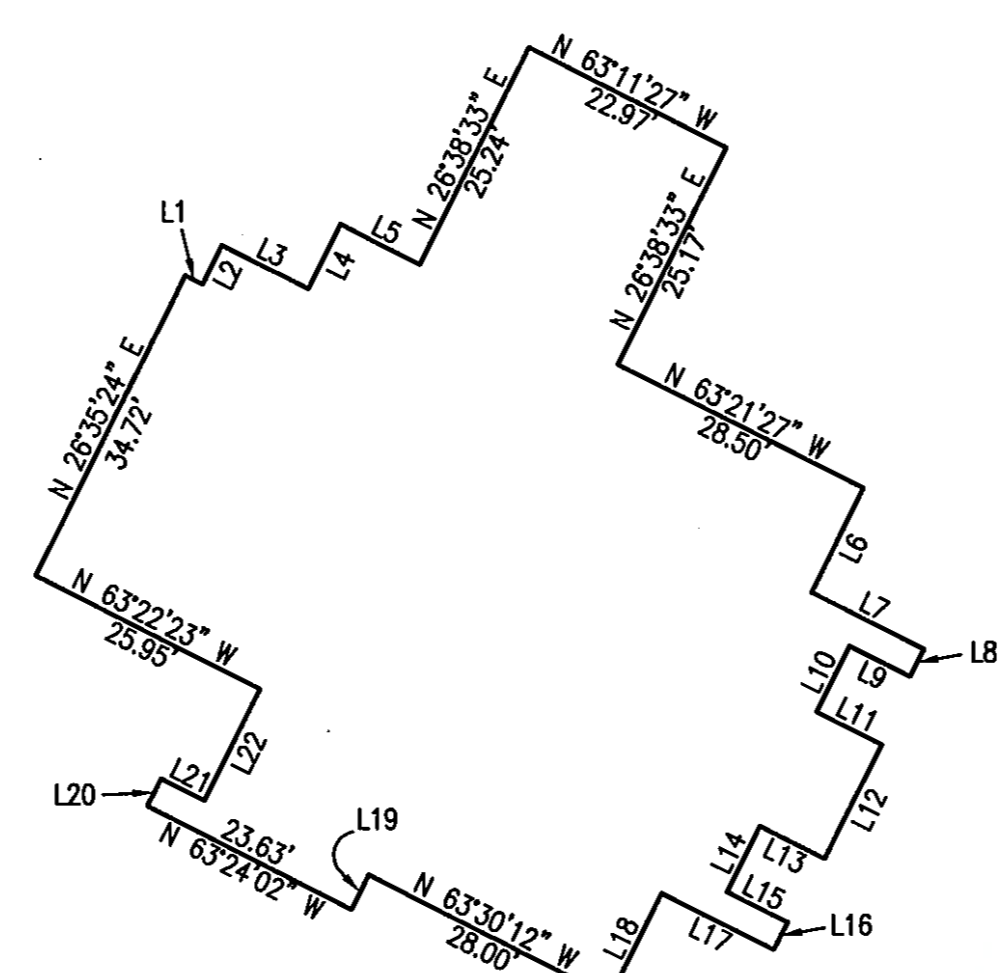
DOUGLAS COUNTY NEVADA
 SHEET 1 OF 2 SHEETS



LOT 5-A LINE DATA

BEARING	DISTANCE
L1 N 71°34'58" E	15.09
L2 N 63°39'43" W	16.01
L3 N 27°20'17" E	7.97
L4 N 63°40'47" W	7.98
L5 N 26°33'54" E	15.98
L6 N 71°34'58" E	15.09

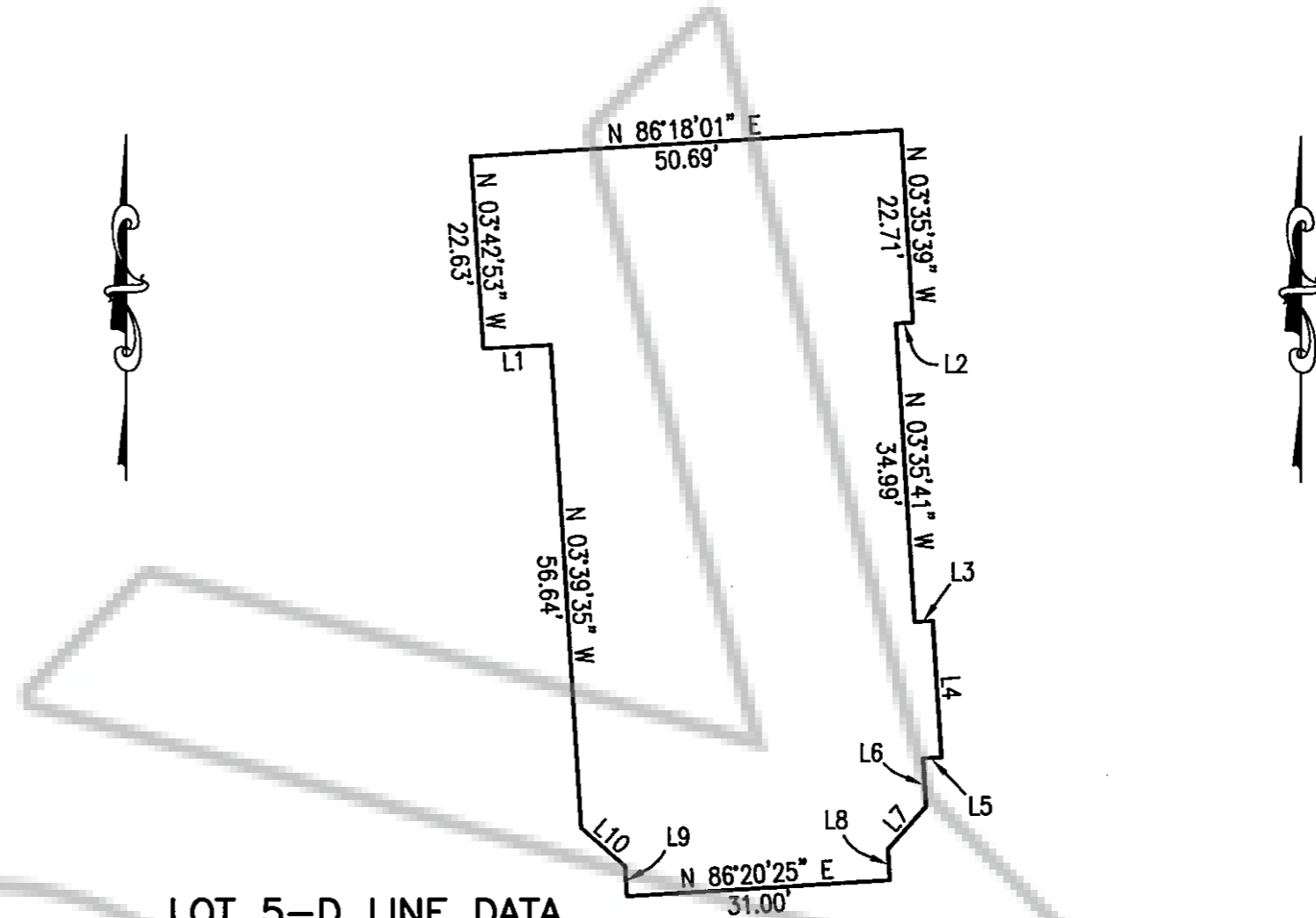
LOT 5-A
4948 S.F.
(0.114 AC.)



LOT 5-B LINE DATA

BEARING	DISTANCE
L1 N 63°00'08" W	2.00
L2 N 26°52'58" E	4.50
L3 N 63°02'08" W	10.00
L4 N 26°52'58" E	7.50
L5 N 63°21'27" W	9.15
L6 N 26°38'33" E	12.00
L7 N 63°21'27" W	13.00
L8 N 26°37'22" E	3.15
L9 N 63°21'27" W	7.35
L10 N 26°37'22" E	7.60
L11 N 63°21'27" W	7.75
L12 N 26°37'22" E	13.03
L13 N 63°30'12" W	7.85
L14 N 26°37'22" E	7.60
L15 N 63°30'12" W	7.35
L16 N 26°37'22" E	3.15
L17 N 63°30'12" W	13.00
L18 N 26°29'48" E	12.00
L19 N 26°49'40" E	4.00
L20 N 26°35'58" E	3.20
L21 N 63°24'02" W	4.95
L22 N 26°35'58" E	12.80

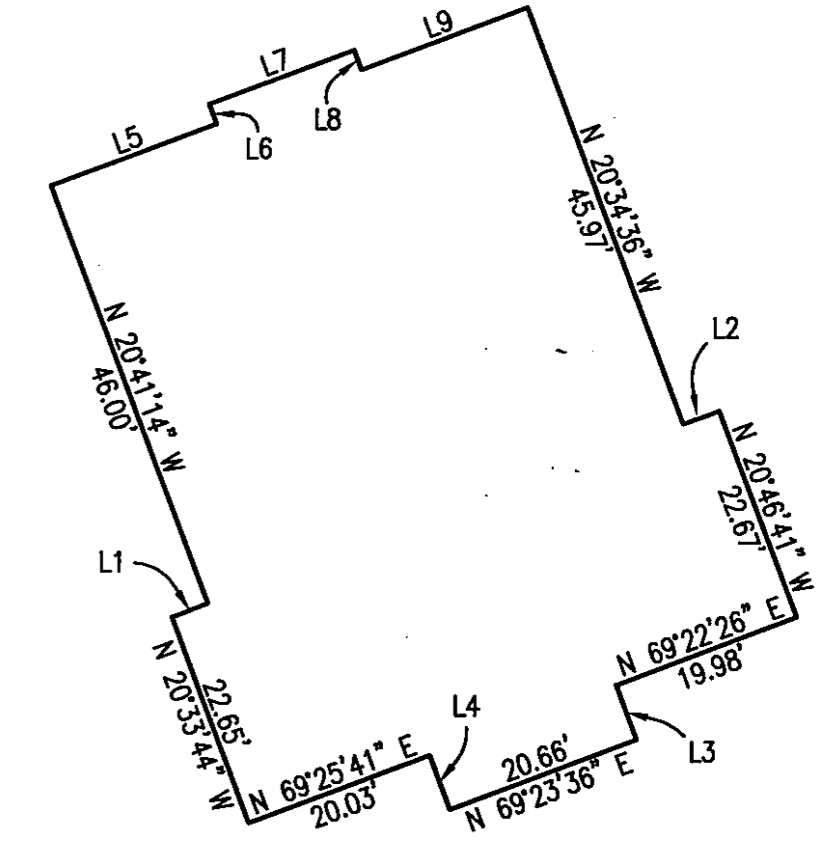
LOT 5-B
4859 S.F.
(0.112 AC.)



LOT 5-D LINE DATA

BEARING	DISTANCE
L1 N 86°51'42" E	7.95
L2 N 63°38'25" E	2.01
L3 N 86°24'19" E	2.13
L4 N 03°35'41" W	16.00
L5 N 86°24'19" E	2.16
L6 N 03°35'41" W	5.64
L7 N 41°24'05" E	6.77
L8 N 03°39'35" W	3.59
L9 N 03°39'35" W	3.53
L10 N 48°39'57" W	6.83

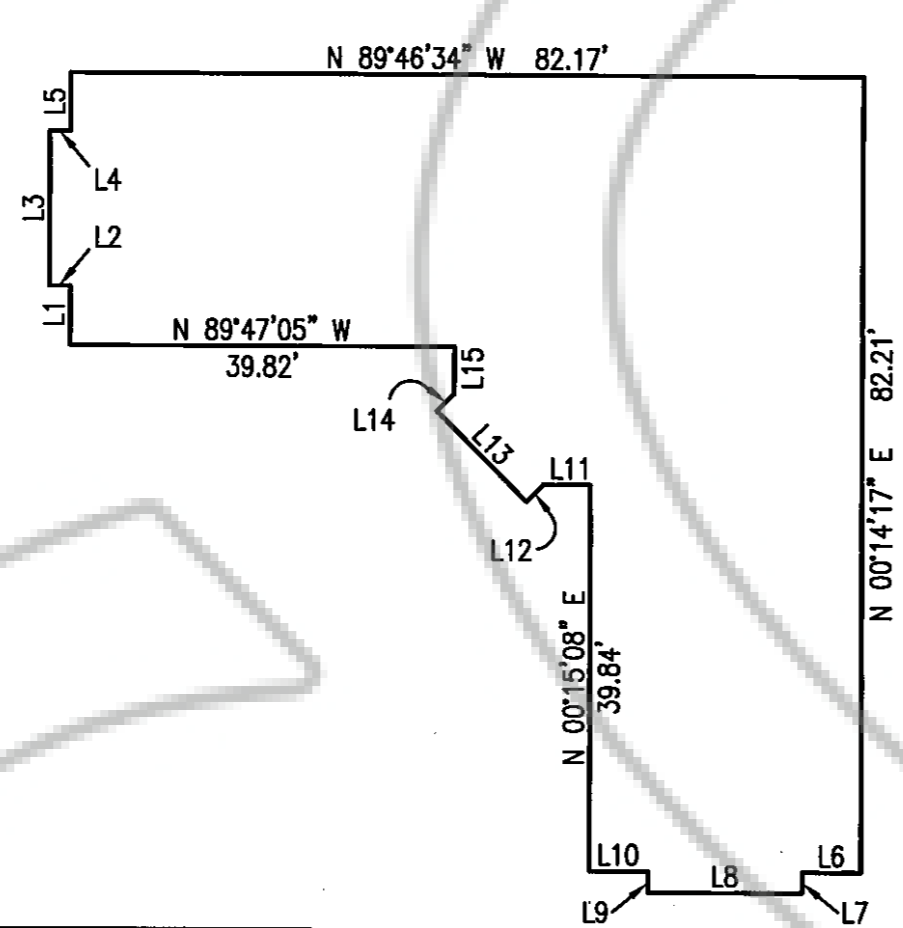
LOT 5-D
3770 S.F.
(0.087 AC.)



LOT 5-E LINE DATA

BEARING	DISTANCE
L1 N 68°53'15" E	3.98
L2 N 70°05'39" E	3.98
L3 N 20°22'38" W	5.99
L4 N 20°30'44" W	5.98
L5 N 69°22'45" E	18.33
L6 N 20°37'15" W	2.17
L7 N 69°22'45" E	16.00
L8 N 20°37'15" W	2.17
L9 N 69°22'45" E	18.40

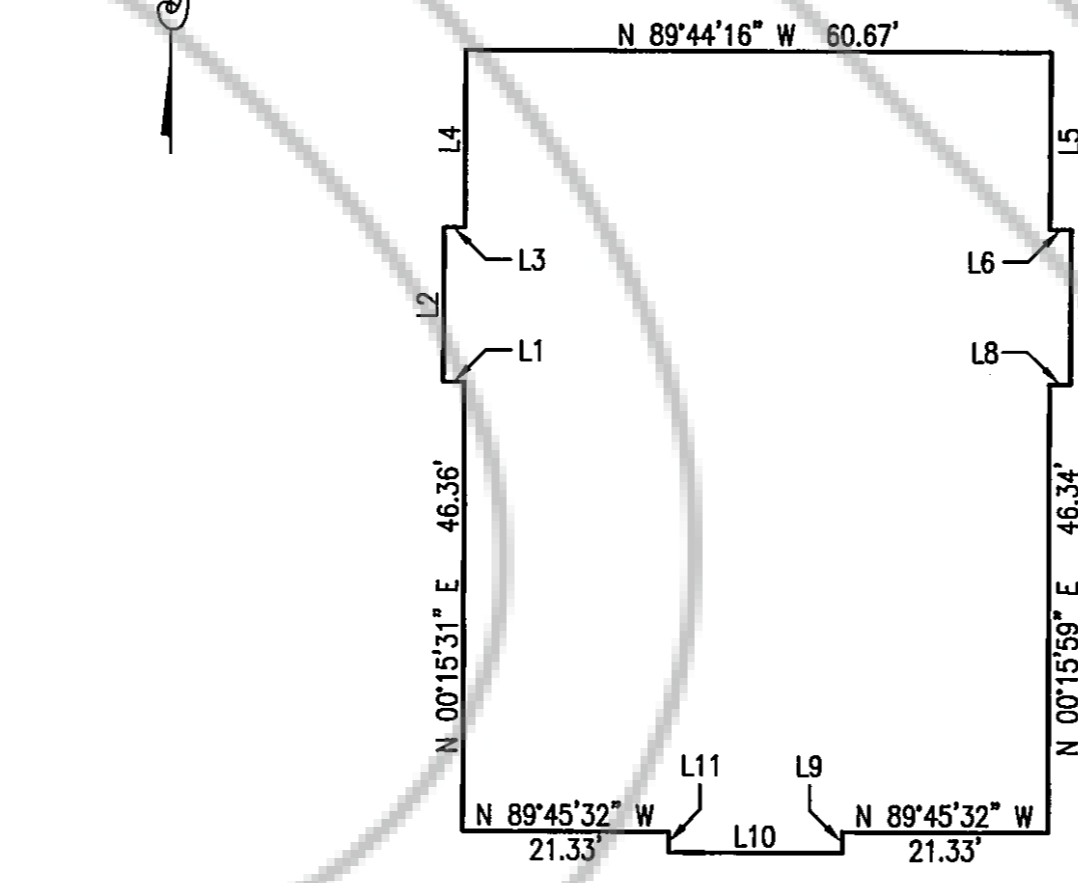
LOT 5-E
3958 S.F.
(0.091 AC.)



LOT 5-N LINE DATA

BEARING	DISTANCE
L1 N 00°12'47" E	6.14
L2 N 89°44'56" W	2.17
L3 N 00°15'04" E	16.00
L4 N 89°44'56" W	2.16
L5 N 00°12'47" E	6.04
L6 N 89°41'29" W	6.10
L7 N 00°15'04" E	2.12
L8 N 89°44'56" W	18.00
L9 N 00°15'04" E	2.14
L10 N 89°41'29" W	6.11
L11 N 89°36'49" W	4.83
L12 N 45°15'39" E	2.53
L13 N 44°44'50" W	13.17
L14 N 45°15'04" E	2.53
L15 N 00°09'30" E	4.83

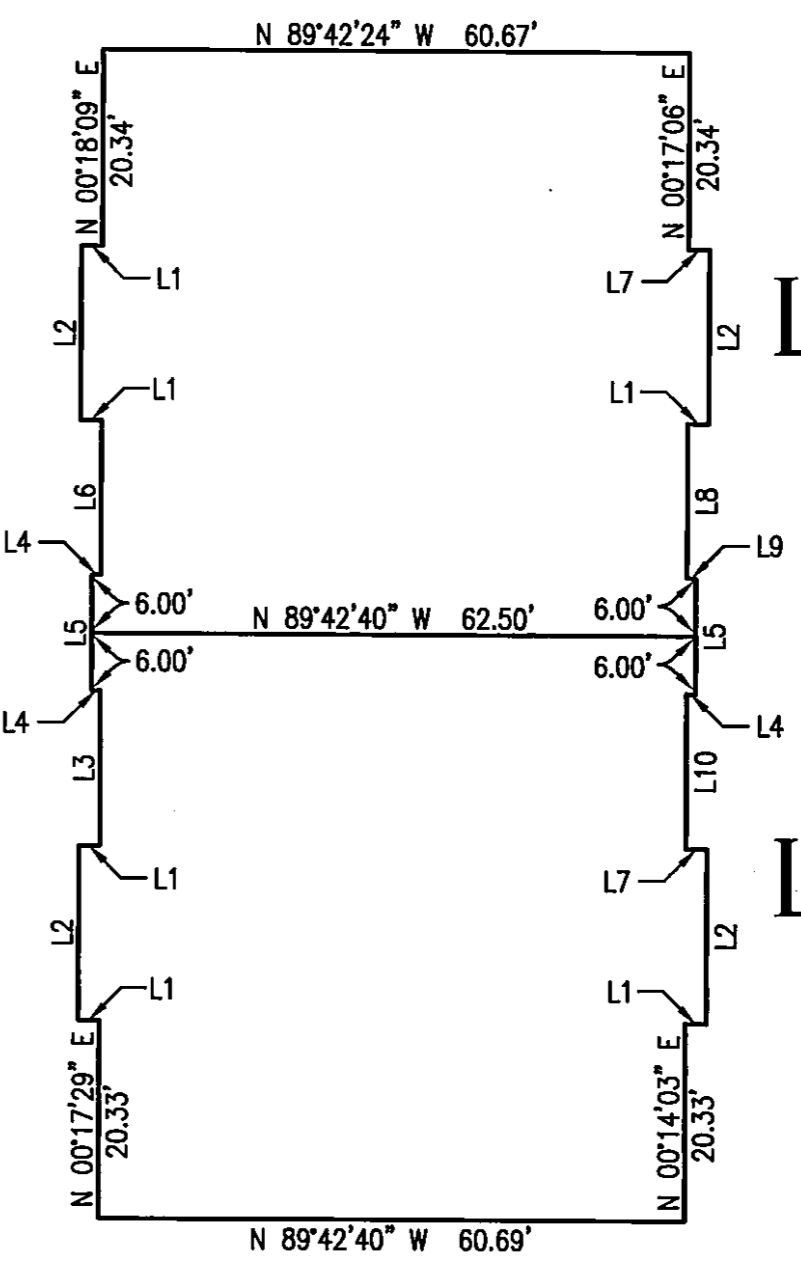
LOT 5-N
4097 S.F.
(0.094 AC.)



LOT 5-O LINE DATA

BEARING	DISTANCE
L1 N 89°44'16" W	2.17
L2 N 00°15'44" E	16.00
L3 N 89°44'16" W	2.17
L4 N 00°15'31" E	18.33
L5 N 00°15'59" E	18.33
L6 N 89°44'16" W	2.17
L7 N 00°15'44" E	16.00
L8 N 89°44'16" W	2.17
L9 N 00°15'44" E	2.15
L10 N 89°44'16" W	18.00
L11 N 00°15'44" E	2.15

LOT 5-O
5003 S.F.
(0.115 AC.)



LOT 5-P-2
3750 S.F.
(0.086 AC.)

LOT 5-P-1
3750 S.F.
(0.086 AC.)

LOT 5-P LINE DATA

BEARING	DISTANCE
L1 N 89°42'40" W	2.17
L2 N 00°17'20" E	18.00
L3 N 00°17'48" E	16.00
L4 N 89°42'40" W	0.92
L5 N 00°17'20" E	12.00
L6 N 00°18'03" E	16.00
L7 N 89°42'40" W	2.15
L8 N 00°14'11" E	16.00
L9 N 89°42'40" W	0.90
L10 N 00°13'45" E	16.00

SURVEYED BUILDING FOOTPRINTS
SCALE: 1" = 20'

RECORD OF SURVEY # 1
FOR
MINDEN VILLAGE
A PLANNED UNIT DEVELOPMENT
BEING A DIVISION OF PARCEL 5 OF THE FINAL SUBDIVISION MAP PD#03-007 FOR MINDEN VILLAGE, RECORDED IN BOOK 0504, PAGE 2786, AS DOC. #612540 LOCATED WITHIN A PORTION OF THE EAST 1/2 OF SECTION 30, TOWNSHIP 13 NORTH, RANGE 20 EAST, M.D.B. & M.
DOUGLAS COUNTY NEVADA
SHEET 2 OF 2 SHEETS

