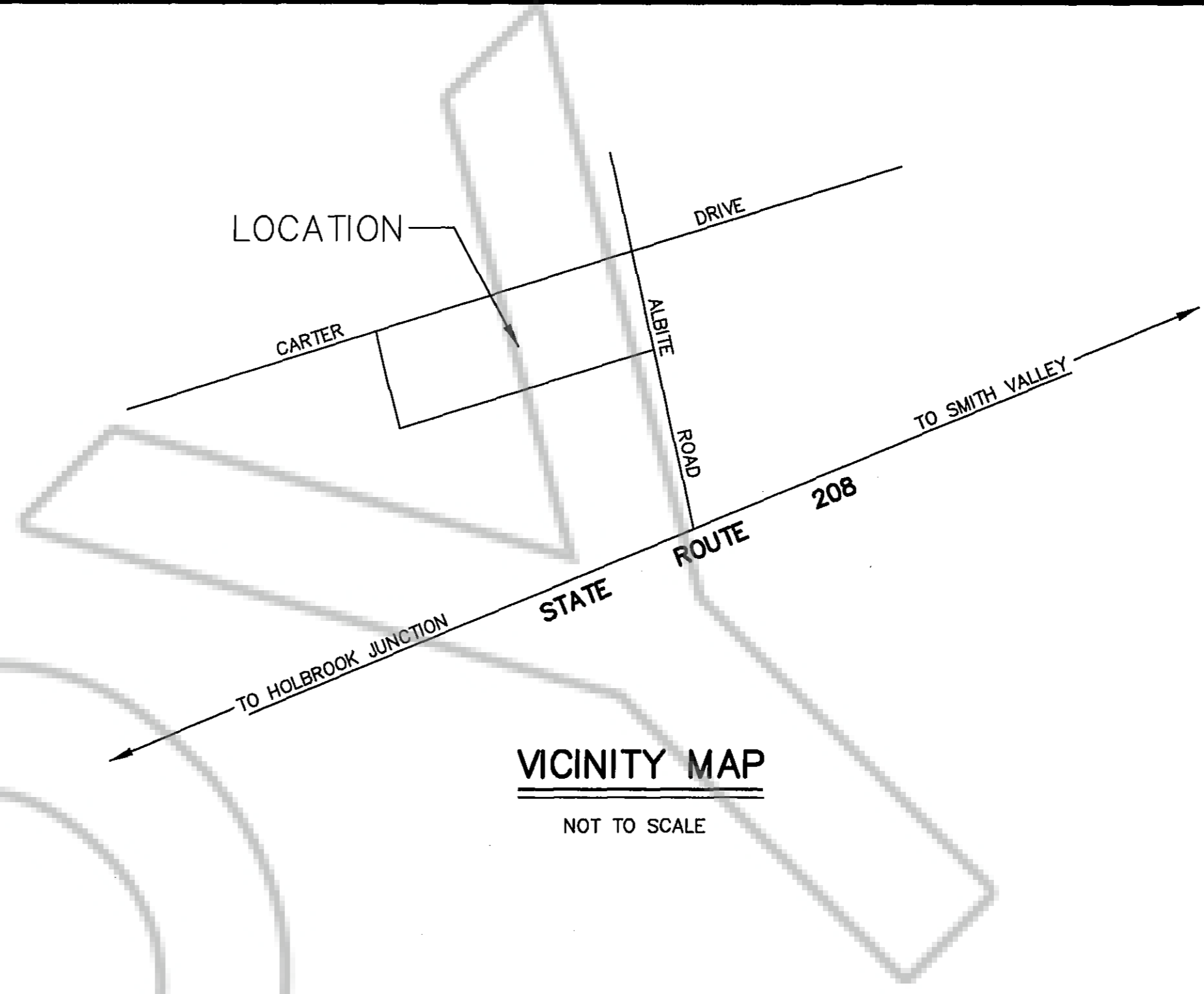
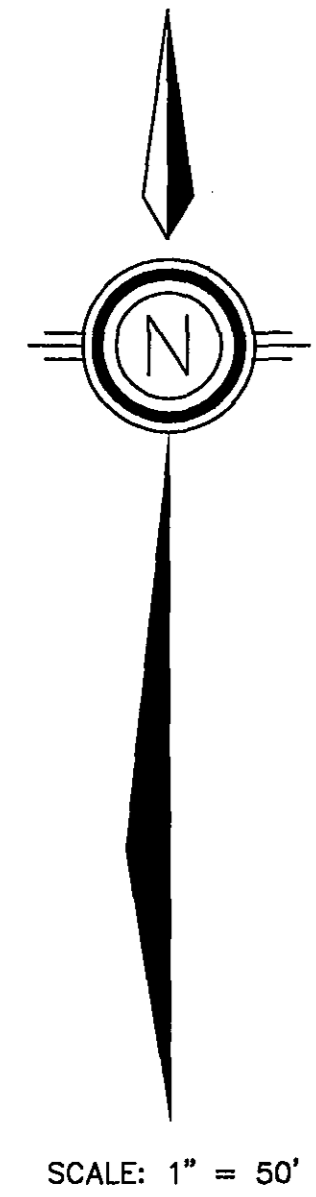
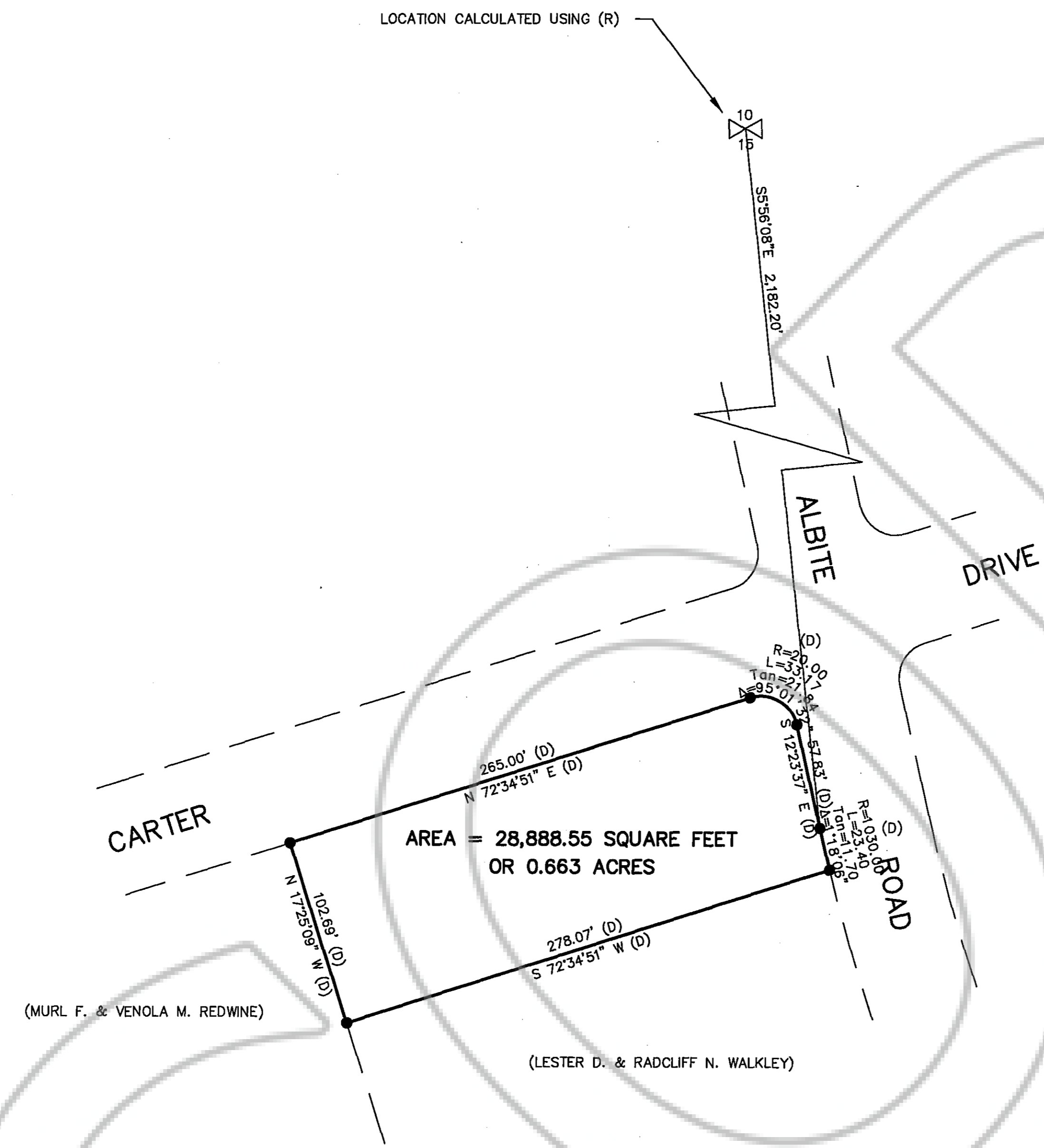


LEGEND

- SET 5/8" REBAR WITH PLASTIC CAP STAMPED PLS 3090
- (D) DEED, BOOK 0602, PAGE 00080, OFFICIAL RECORDS, DOUGLAS COUNTY, NEVADA.
- (R) OFFICIAL PLAT OF TOPAZ RANCH ESTATES, UNIT NO. 4, DOCUMENT #50212, OFFICIAL RECORDS, DOUGLAS COUNTY, NEVADA.



LOCATION CALCULATED USING (R)



SURVEYOR'S CERTIFICATE

I, WYATT J. OWENS, A PROFESSIONAL LAND SURVEYOR REGISTERED IN THE STATE OF NEVADA, CERTIFY THAT:

- THIS PLAT REPRESENTS THE RESULTS OF A SURVEY CONDUCTED UNDER MY DIRECT SUPERVISION AT THE INSTANCE OF STEVE BOHLER.
- THE LANDS SURVEYED LIE WITHIN SECTION 15, TOWNSHIP 10 NORTH, RANGE 22 EAST, M.D.B. & M., AND THE SURVEY WAS COMPLETED ON JANUARY 26, 2005.
- THIS PLAT COMPLIES WITH THE APPLICABLE STATE STATUTES AND ANY LOCAL ORDINANCES IN EFFECT ON THE DATE THAT THE GOVERNING BODY GAVE IT'S FINAL APPROVAL.
- THE MONUMENTS DEPICTED ON THIS PLAT ARE OF THE CHARACTER SHOWN, OCCUPY THE POSITIONS INDICATED AND ARE OF SUFFICIENT NUMBER AND DURABILITY.



DATE 1/27/05
 WYATT J. OWENS, PLS 3090

COUNTY RECORDER'S CERTIFICATE

FILED THIS 28th DAY OF January, 2005 AT 49 MINUTES PAST 12 O'CLOCK P. M., IN BOOK 0105, AT PAGE 10029; DOCUMENT NUMBER 638479, RECORDED AT THE REQUEST OF: WYATT OWENS
 Colleen Fekal-Deputy
 DOUGLAS COUNTY RECORDER

BASIS OF BEARINGS

THE BASIS OF BEARINGS OF THIS MAP IS THE SOUTH LINE OF THE SW 1/4 OF SECTION 10, T. 10 N., R. 22 E., M.D.B. & M. AS PER (R). SAID BEARING IS N89° 03' 40"E.

OWENS
 ENGINEERING
 Civil Engineering, Land Surveying
 P.O. Box 16
 Gardnerville, Nevada 89410
 (775) 782-2881

SHEET 1 OF 1

RECORD OF SURVEY
 OF
A.P.N. 1022-15-001-120
 FOR
STEVEN A. BOHLER
 WITHIN THE NORTH 1/2 OF SECTION 15, T. 10 N., R. 22 E., M.D.B. & M. DOUGLAS COUNTY, NEVADA