

FINAL SUBDIVISION MAP
 PLANNED UNIT DEVELOPMENT
 PD 02-04

LA COSTA AT MONTE VISTA PHASE 1

LOCATED WITHIN PORTIONS OF SECTIONS 29 AND 30,
 TOWNSHIP 13 NORTH, RANGE 20 EAST, MOUNT DIABLO MERIDIAN
 DOUGLAS COUNTY, NEVADA

OWNER'S CERTIFICATE

KNOW ALL MEN BY THESE PRESENTS, THAT THE UNDERSIGNED, ANDREW W. MITCHELL, PRES. OF SYNCON HOMES, MGR. OF LA COSTA MINDEN, LLC, OWNER OF RECORD TITLE INTEREST, HEREBY CONSENTS TO THE PREPARATION AND RECORDING OF THIS MAP IN ACCORDANCE WITH AND FOR THE USES AND PURPOSES SET FORTH IN THE NEVADA REVISED STATUTES, CHAPTERS 116 AND 278, AND SUBSEQUENT AMENDMENTS THERETO, AND DOUGLAS COUNTY CODE CHAPTER 20, AND DOES HEREBY OFFER AND CONVEY FOR DEDICATION TO THE COUNTY OF DOUGLAS, STATE OF NEVADA, FOR THE USE OF THE PUBLIC THOSE PORTIONS OF SAID LANDS DESIGNATED ON THIS MAP AS PUBLIC WAYS AND RIGHTS-OF-WAY AND DOES HEREBY OFFER AND DEDICATE FOR PARTICULAR PURPOSES THE RIGHTS OF WAY AND EASEMENTS SHOWN FOR PEDESTRIAN ACCESS, LANDSCAPE, PUBLIC UTILITIES, MAILBOX, NATURAL GAS, WATER, SEWER, FOR POLES, ANCHORS, GUYS FOR CONDUCTOR WIRE AND CONDUIT FOR ELECTRICAL, CABLE T.V. AND TELEPHONE SERVICE TOGETHER WITH ANY AND ALL APPURTENANCES THERETO, ON ACROSS, AND UNDER ALL LAND LYING OUTSIDE THE INDIVIDUAL SITES SHOWN THEREON.

Andrew W. Mitchell

ANDREW W. MITCHELL, PRESIDENT OF SYNCON HOMES, MANAGER OF LA COSTA MINDEN, LLC

COUNTY OF Nevada
 STATE OF Douglas SS:

ON THIS 7th DAY OF JANUARY, IN THE YEAR 2005, BEFORE ME, A NOTARY PUBLIC, PERSONALLY APPEARED ANDREW W. MITCHELL, PERSONALLY KNOWN BY ME TO BE THE PERSON WHOSE NAME IS SUBSCRIBED TO THE ABOVE INSTRUMENT WHO ACKNOWLEDGED THAT HE EXECUTED THE SAME IN HIS AUTHORIZED CAPACITIES AND THAT BY HIS SIGNATURE ON THE INSTRUMENT, THE PERSONS, OR THE ENTITY ON BEHALF OF WHICH THE PERSONS ACTED, EXECUTED THE INSTRUMENT.

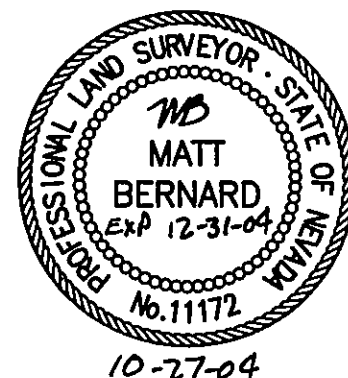
WITNESS MY HAND AND OFFICIAL SEAL
 NOTARY'S SIGNATURE *Donna Sue Hawkins*
 MY COMMISSION EXPIRES: 6/9/05



SURVEYOR'S CERTIFICATE

I, MATT BERNARD, A PROFESSIONAL LAND SURVEYOR LICENSED IN THE STATE OF NEVADA CERTIFY THAT:

- 1) THIS PLAT REPRESENTS THE RESULTS OF A SURVEY CONDUCTED UNDER MY DIRECT SUPERVISION AT THE INSTANCE OF LA COSTA MINDEN, LLC.
- 2) THE LANDS SURVEYED LIE WITHIN PORTIONS OF SECTIONS 29 AND 30, T.13N., R.20E., M.D.M. AND THE SURVEY WAS COMPLETED ON 10-27-04.
- 3) THIS PLAT COMPLIES WITH THE APPLICABLE STATE STATUTES AND ANY LOCAL ORDINANCE IN EFFECT ON THE DATE THAT THE GOVERNING BODY GAVE ITS FINAL APPROVAL.
- 4) THE MONUMENTS DEPICTED ON THE PLAT WILL BE OF THE CHARACTER SHOWN AND OCCUPY THE POSITIONS INDICATED BY 10-27-05 AND AN APPROPRIATE PERFORMANCE BOND HAS BEEN POSTED WITH THE GOVERNING BODY TO ASSURE THEIR INSTALLATION.



Matt Bernard
 MATT BERNARD, P.L.S. 11172

BUREAU OF HEALTH PROTECTION SERVICES

THIS FINAL MAP IS APPROVED BY THE HEALTH DIVISION OF THE DEPARTMENT OF HUMAN RESOURCES. THIS APPROVAL CONCERNS SEWAGE DISPOSAL, WATER POLLUTION, WATER QUALITY AND WATER SUPPLY FACILITIES AND IS PREDICATED UPON PLANS FOR A PUBLIC WATER SUPPLY AND A COMMUNITY SEWAGE DISPOSAL SYSTEM.

HEALTH DIVISION
 SIGNATURE: *Richard P. Drew* DATE 2/7/05
 PRINTED NAME: RICHARD P. DREW

DIVISION OF WATER RESOURCES CERTIFICATE

THIS FINAL MAP IS APPROVED BY THE DIVISION OF WATER RESOURCES OF THE DEPARTMENT OF CONSERVATION AND NATURAL RESOURCES CONCERNING WATER QUANTITY SUBJECT TO THE REVIEW OF APPROVAL ON FILE IN THIS OFFICE.

DIVISION OF WATER RESOURCES
 SIGNATURE: *Robert H. Zeisloff, P.E.* DATE 11/05/2004
 PRINTED NAME: ROBERT H. ZEISLOFF

COUNTY TAX COLLECTOR'S CERTIFICATE

I, BARBARA J. REED, DOUGLAS COUNTY CLERK-TREASURER AND EX-OFFICIO TAX COLLECTOR, DO HEREBY CERTIFY THAT ALL PROPERTY TAXES ON THIS LAND FOR THE FISCAL YEAR HAVE BEEN PAID. (A.P.N. 1320-30-501-009) NO AG TAXES

Barbara J. Reed DATE 4-22-05
 BARBARA J. REED
 DOUGLAS COUNTY CLERK-TREASURER
 by *Mary Ann Kenner*

COUNTY ENGINEER'S CERTIFICATE

I, CARL RUSCHMEYER, DOUGLAS COUNTY ENGINEER, DO HEREBY CERTIFY THAT I HAVE EXAMINED THIS FINAL MAP CONSISTING OF FOUR (4) SHEETS, ENTITLED "LA COSTA AT MONTE VISTA - PHASE 1", AND I AM SATISFIED THAT THIS MAP IS TECHNICALLY CORRECT AND APPROPRIATE FINANCIAL SECURITY FOR THE IMPROVEMENTS AND SETTING OF THE SURVEY MONUMENTS HAS BEEN POSTED WITH DOUGLAS COUNTY.

Carl Ruschmeyer DATE 4/19/05
 CARL RUSCHMEYER, P.E.
 DOUGLAS COUNTY ENGINEER

UTILITY COMPANIES' CERTIFICATE

WE, THE UNDERSIGNED PUBLIC UTILITIES, ACCEPT AND APPROVE THE PUBLIC UTILITY EASEMENT AS SHOWN ON THIS PLAT. THIS APPROVAL DOES NOT GUARANTEE ACCESSIBILITY FOR SERVICE.

SIERRA PACIFIC POWER COMPANY
 SIGNATURE: *Michael Price* DATE: 11-2-04
 PRINTED NAME: MICHAEL PRICE

VERIZON NEVADA
 SIGNATURE: *S. Crossman* DATE: 11-3-04
 PRINTED NAME: LYNDEN CROSSMAN

SOUTHWEST GAS COMPANY
 SIGNATURE: *Larry Gibson* DATE: 11/2/04
 PRINTED NAME: LARRY GIBSON

MINDEN-GARDNERVILLE SANITATION DISTRICT
 SIGNATURE: *Jerome G. Gehring* DATE: 1-13-05
 PRINTED NAME: Jerome G. Gehring

TOWN OF MINDEN
 SIGNATURE: *M. Bernard*
 PRINTED NAME: M. BERNARD
 DATE: 10/7/04

FIRE DEPARTMENT'S CERTIFICATE

THE FIREFIGHTING FACILITIES AND ACCESS SHOWN ON THESE PLANS ARE HEREBY APPROVED BY THE EAST FORK FIRE PROTECTION SERVICE.

Steve Eisele DATE 12/06/04
 STEVE EISELE
 EAST FORK FIRE PROTECTION SERVICE

COUNTY CLERK'S CERTIFICATE

IT IS HEREBY CERTIFIED THAT THIS PLAT WAS PRESENTED TO THE DEPARTMENT OF COMMUNITY DEVELOPMENT ON THE 27th DAY OF Jan, 2005, AND WAS DULY APPROVED. IN ADDITION ALL OFFERS OF DEDICATION FOR ALL PUBLIC ROADWAYS AND OTHER PUBLIC USES WERE REJECTED WITH THE RESERVATION TO ACCEPT SAID OFFERS AT A LATER DATE.

Barbara J. Reed
 BARBARA REED
 COUNTY CLERK
 by *Christy M. Kullback* DEPUTY

COMMUNITY DEVELOPMENT DEPARTMENT CERTIFICATE

IT IS HEREBY CERTIFIED THAT THIS PLAT WAS REVIEWED AND APPROVED BY THE DOUGLAS COUNTY DEPARTMENT OF COMMUNITY DEVELOPMENT ON THE 22nd DAY OF April, 2005. THIS PLAT IS IN SUBSTANTIAL CONFORMANCE WITH THE TENTATIVE MAP AND ALL CONDITIONS OF APPROVAL HAVE BEEN SATISFIED. IN ADDITION, ALL OFFERS OF DEDICATION FOR ALL PUBLIC ROADWAYS AND OTHER PUBLIC USES WERE REJECTED WITH THE RESERVATION TO ACCEPT SAID OFFERS AT A LATER DATE.

Mimi B. Moss DATE 4-22-05
 MIMI B. MOSS
 PLANNING/ECONOMIC DEVELOPMENT MANAGER

TITLE CERTIFICATE

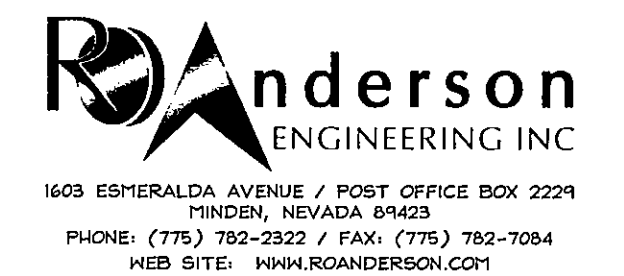
THIS IS TO CERTIFY THAT THE PARTIES AS LISTED WITHIN THE OWNERS CERTIFICATE ARE THE ONLY PARTIES OF RECORD HAVING INTEREST IN THE TRACTS OF LAND EMBRACED WITHIN THE GRAPHIC BORDER SHOWN ON THIS PLAT. THE FOLLOWING IS A COMPLETE LIST OF LIEN AND/OR HOLDERS OF RECORD: DIT rec 8-31-04 BK 804 PS 13697 #623085
DIT rec 8-31-04 BK 804 PS 13723 #623086

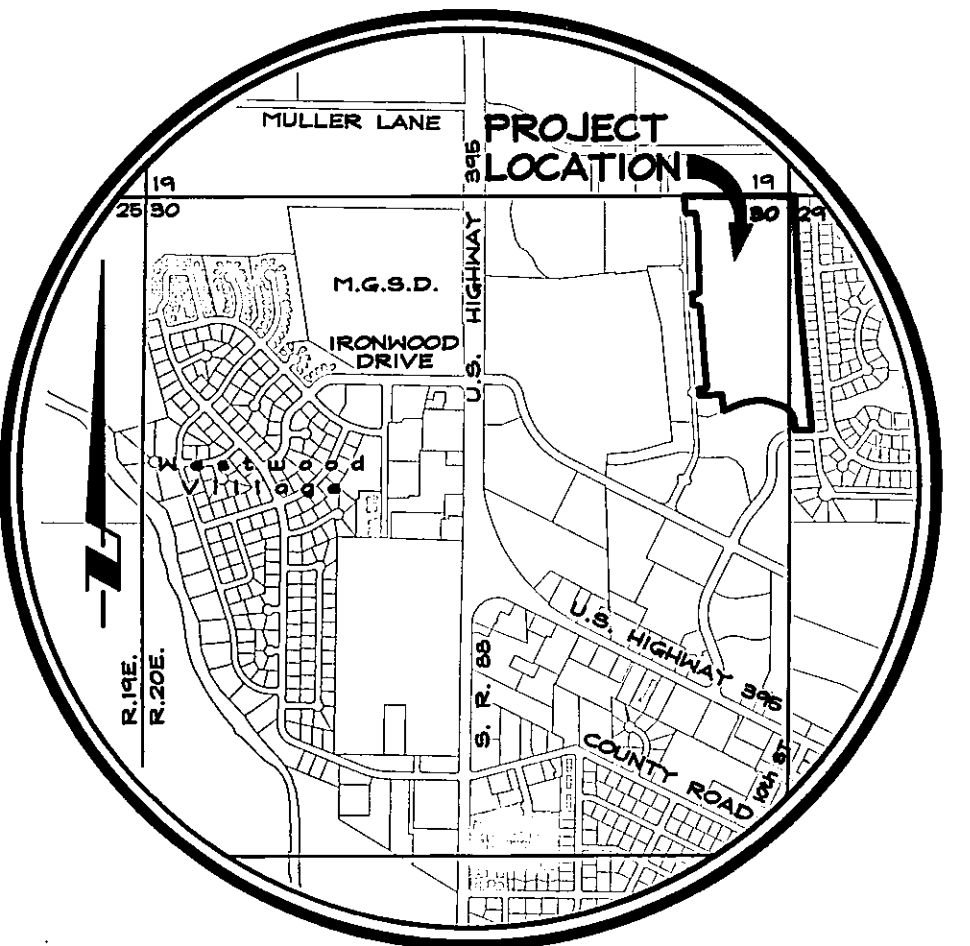
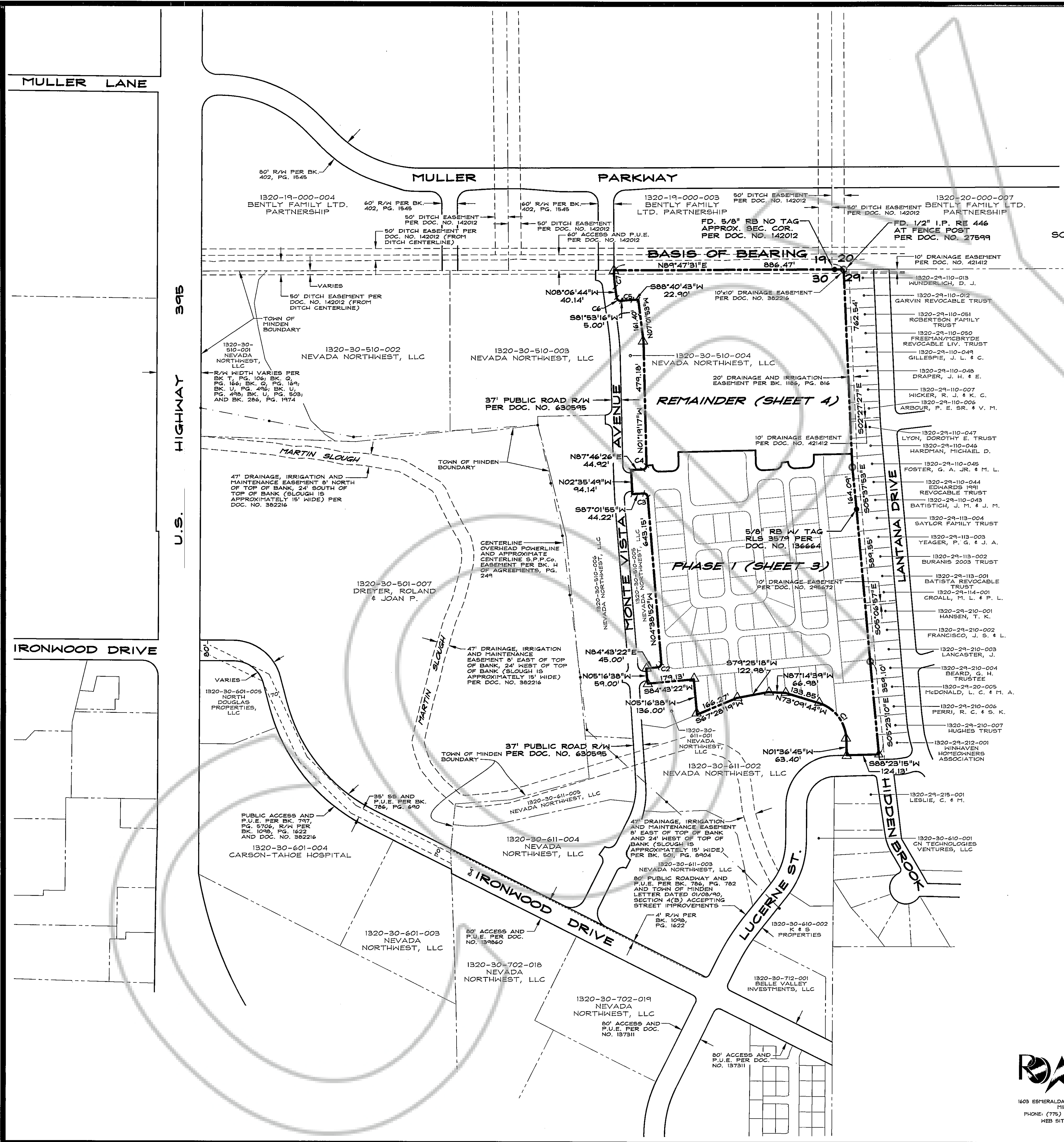
HW DATE Nov. 4, 2004
 HW *WESTERLY* ASST. SECRETARY
 WESTERN TITLE COMPANY

RECORDER'S CERTIFICATE

FILED FOR RECORD THIS 25th DAY OF APRIL, 2005, AT 13 MINUTES PAST 12 O'CLOCK P.M., IN BOOK 0405 OF OFFICIAL RECORDS, AT PAGE 9815, DOCUMENT NO. 042625. RECORDED AT THE REQUEST OF LA COSTA MINDEN, LLC.

Barbara J. Reed
 BARBARA J. REED
 DOUGLAS COUNTY RECORDER





SCALE: 1" = 200'

NOTES

TOTAL AREA: 31.28 ACRES
 ROADWAYS: 4.94 ACRES LOTS: (71) 10.95 ACRES
 PARK: 1.04 ACRES OPEN SPACE: 0.88 ACRES REMAINDER: 13.47 ACRES

THIS MAP IS A DIVISION OF ADJUSTED PARCEL 2 OF THE RECORD OF SURVEY TO SUPPORT A BOUNDARY LINE ADJUSTMENT FOR NEVADA NORTHWEST, LLC, RECORDED DECEMBER 18, 2003 IN BOOK 1203, AT PAGE 8100, AS DOCUMENT NO. 599848.

PORTIONS OF THESE PARCELS LIE WITHIN THE SHADED 'X' FLOOD ZONE AS SAID PARCELS PLOT BY SCALE ON THE FLOOD INSURANCE RATE MAP FOR DOUGLAS COUNTY, NEVADA, MAP NUMBER 32005C0235 F DATED NOVEMBER 8, 1999.

AN 18' PEDESTRIAN ACCESS EASEMENT, PUBLIC UTILITY EASEMENT, AND LANDSCAPE EASEMENT SHALL EXIST ALONG ALL ROAD FRONTAGES AND A 5' PUBLIC UTILITY EASEMENT SHALL EXIST ALONG ALL SIDE, REAR, AND ALLEY LOT LINES.

ANY FURTHER DIVISION OF THESE PARCELS MAY BE SUBJECT TO SUBDIVISION IMPROVEMENTS AS PROVIDED UNDER NRS 278.462(3).

MAINTENANCE OF ALL DRAINAGE FACILITIES, EASEMENTS, IMPROVED AND UNIMPROVED OPEN SPACE AREAS SHALL BE THE RESPONSIBILITY OF THE INDIVIDUAL PROPERTY OWNERS OR OTHER PRIVATE ENTITY, INCLUDING A HOMEOWNER'S ASSOCIATION OR THE TOWN OF MINDEN. DOUGLAS COUNTY REJECTS ANY OFFER OF DEDICATION OF DRAINAGE FACILITIES, DRAINAGE EASEMENTS, OR OPEN SPACE AREAS.

OBSTRUCTING THE FLOW OR ALTERING THE COURSE OF A DRAINAGE CHANNEL IS PROHIBITED, UNLESS PERMITTED BY AUTHORIZING AGENCY.

BASIS OF BEARING

N89°47'31"E - THE NORTH LINE OF ADJUSTED PARCEL 2 AS SHOWN ON THE RECORD OF SURVEY TO SUPPORT A BOUNDARY LINE ADJUSTMENT FOR NEVADA NORTHWEST, LLC, RECORDED DECEMBER 18, 2003 AS DOC. NO. 599848.

LEGEND

- △ FOUND 5/8" REBAR WITH PLASTIC CAP PLS 11172
- ⊕ FOUND 5/8" REBAR WITH PLASTIC CAP PLS 11172
- FOUND 1/2" IRON PIPE RE 446 PER DOC. NO. 27599
- FOUND 5/8" REBAR AS NOTED

CURVE TABLE

CURVE	DELTA	RADIUS	LENGTH	TANGENT	CH. BRG.	CH. DIST.
C1	70°51'23"	150.00'	185.50'	106.71'	N37°44'02"W	173.90'
C2	89°22'14"	15.00'	23.40'	14.84'	N40°02'15"E	21.10'
C3	88°19'13"	15.00'	23.12'	14.57'	N48°48'28"W	20.90'
C4	89°05'43"	15.00'	23.33'	14.76'	N43°13'38"E	21.05'
C5	06°47'27"	329.50'	39.05'	19.55'	S85°16'59"W	39.03'
C6	90°00'00"	15.00'	23.56'	15.00'	S85°06'44"W	21.21'
C7	07°54'15"	470.00'	64.84'	32.47'	N04°09'37"W	64.79'

SCALE: 1" = 200' SHEET 2 OF 4

FINAL MAP
PD 02-04
 FOR
LA COSTA AT MONTE VISTA

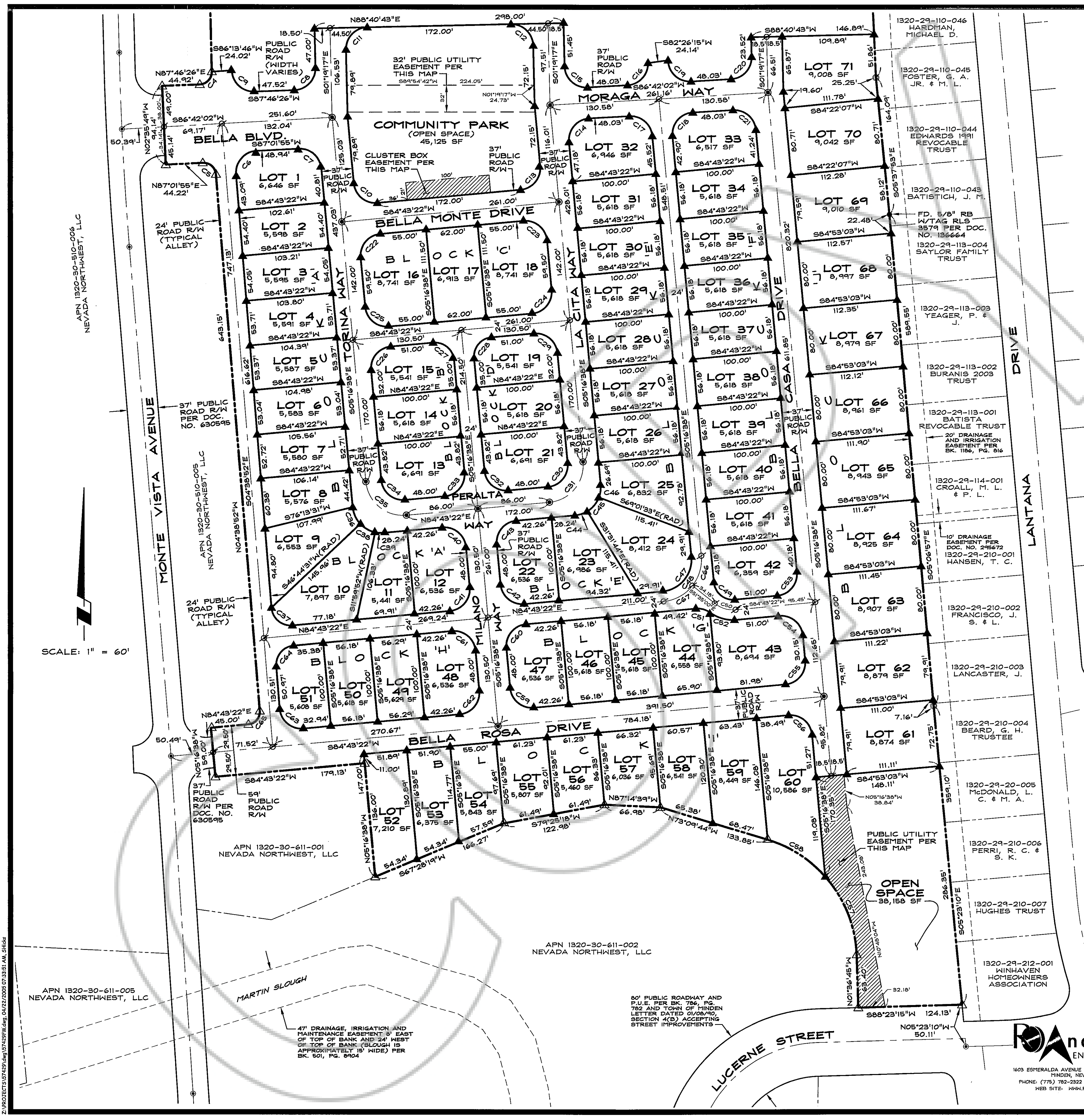
LOCATED WITHIN PORTIONS OF SECTIONS 29 & 30,
 T.13N., R.20E., M.D.M.
 DOUGLAS COUNTY, NEVADA

574-29-04
 57429FM.dwg 02/14/05

Anderson
 ENGINEERING INC

1608 ESHERALDA AVENUE / POST OFFICE BOX 2229
 MINDEN, NEVADA 89423
 PHONE: (775) 782-2322 / FAX: (775) 782-7084
 WEB SITE: WWW.ANDERSONENGINEERING.COM

Z:\PROJECTS\57429FM.dwg 57429FM.dwg 03/29/2005 10:38:13 AM chobc



CURVE TABLE

CURVE	DELTA	RADIUS	LENGTH	TANGENT	CHD. BRG.	CHD. DIST.
C1	07°54'18"	470.00'	64.84'	32.47'	S04°09'37"E	64.74'
C2	02°00'00"	15.00'	23.56'	15.00'	S83°02'44"E	21.21'
C3	06°47'27"	329.50'	39.05'	19.55'	S85°16'59"W	39.03'
C4	8°05'43"	15.00'	23.33'	14.76'	N43°13'35"E	21.05'
C5	88°14'13"	15.00'	23.12'	14.57'	N48°48'28"W	20.90'
C6	91°40'47"	26.00'	41.60'	26.77'	S41°11'32"W	37.30'
C7	90°25'28"	26.00'	41.03'	26.19'	N50°29'22"W	36.91'
C8	90°10'13"	26.00'	40.92'	26.08'	N43°45'49"E	36.82'
C9	90°54'11"	26.00'	41.25'	26.41'	S46°46'25"E	37.06'
C10	90°00'00"	26.00'	40.84'	26.00'	S50°16'38"E	36.77'
C11	90°00'00"	26.00'	40.84'	26.00'	S43°40'43"W	36.77'
C12	90°00'00"	26.00'	40.84'	26.00'	N46°19'17"W	36.77'
C13	90°00'00"	26.00'	40.84'	26.00'	N39°43'22"E	36.77'
C14	91°58'40"	26.00'	41.74'	26.91'	S40°42'42"W	37.40'
C15	91°58'41"	26.00'	41.74'	26.91'	S47°18'37"E	37.40'
C16	88°01'19"	26.00'	39.94'	25.12'	N42°41'23"E	36.13'
C17	88°01'20"	26.00'	39.94'	25.12'	N49°17'18"W	36.13'
C18	91°58'40"	26.00'	41.74'	26.91'	S40°42'42"W	37.40'
C19	91°58'41"	26.00'	41.74'	26.91'	S47°18'37"E	37.40'
C20	88°01'19"	26.00'	39.94'	25.12'	N42°41'23"E	36.13'
C21	88°01'20"	26.00'	39.94'	25.12'	N49°17'18"W	36.13'
C22	90°00'00"	26.00'	40.84'	26.00'	S39°43'22"E	36.77'
C23	90°00'00"	26.00'	40.84'	26.00'	N50°16'38"W	36.77'
C24	90°00'00"	26.00'	40.84'	26.00'	N39°43'22"E	36.77'
C25	90°00'00"	26.00'	40.84'	26.00'	S50°16'38"E	36.77'
C26	90°00'00"	26.00'	40.84'	26.00'	S39°43'22"E	36.77'
C27	90°00'00"	23.00'	36.13'	23.00'	N50°16'38"W	32.53'
C28	90°00'00"	23.00'	36.13'	23.00'	S39°43'22"E	32.53'
C29	90°00'00"	26.00'	40.84'	26.00'	N50°16'38"W	36.77'
C30	90°00'00"	26.00'	40.84'	26.00'	N39°43'22"E	36.77'
C31	90°00'00"	44.50'	69.94'	44.50'	N39°43'22"E	62.93'
C32	90°00'00"	26.00'	40.84'	26.00'	S50°16'38"E	36.77'
C33	90°00'00"	26.00'	40.84'	26.00'	S39°43'22"E	36.77'
C34	90°00'00"	26.00'	40.84'	26.00'	S50°16'38"E	36.77'
C35	90°00'00"	44.50'	69.94'	44.50'	S50°16'38"E	62.93'
C36	37°58'51"	34.00'	22.54'	11.20'	S24°16'04"E	22.13'
C37	90°37'46"	23.00'	36.38'	23.25'	S49°37'45"E	32.71'
C38	34°44'39"	34.00'	20.62'	10.64'	S60°37'48"E	20.30'
C39	17°16'30"	34.00'	10.25'	5.16'	S86°38'23"E	10.21'
C40	90°00'00"	26.00'	40.84'	26.00'	N50°16'38"W	36.77'
C41	90°00'00"	26.00'	40.84'	26.00'	N39°43'22"E	36.77'
C42	90°00'00"	26.00'	40.84'	26.00'	S50°16'38"E	36.77'
C43	90°00'00"	26.00'	40.84'	26.00'	S39°43'22"E	36.77'
C44	26°15'06"	34.00'	15.58'	7.88'	N71°38'42"E	15.44'
C45	37°29'49"	34.00'	22.25'	11.54'	N39°43'22"E	21.86'
C46	26°15'05"	34.00'	15.58'	7.93'	N07°50'54"E	15.44'
C47	90°00'00"	38.00'	59.69'	38.00'	N39°43'22"E	53.74'
C48	90°00'00"	50.00'	78.54'	50.00'	N39°43'22"E	70.71'
C49	90°00'00"	23.00'	36.13'	23.00'	S50°16'38"E	32.53'
C50	43°41'38"	35.00'	26.69'	14.03'	S73°28'49"E	26.05'
C51	41°13'39"	25.00'	17.39'	9.40'	N74°39'49"W	17.60'
C52	41°13'39"	47.00'	33.82'	17.68'	S74°39'49"E	33.09'
C53	90°00'00"	26.00'	40.84'	26.00'	N39°43'22"E	36.77'
C54	90°00'00"	26.00'	40.84'	26.00'	N50°16'38"W	36.77'
C55	90°00'00"	26.00'	40.84'	26.00'	N39°43'22"E	36.77'
C56	90°00'00"	26.00'	40.84'	26.00'	N50°16'38"W	36.77'
C57	39°13'23"	150.00'	102.68'	53.45'	N21°52'03"W	102.68'
C58	31°38'00"	150.00'	82.82'	42.49'	N57°20'44"W	81.77'
C59	90°00'00"	26.00'	40.84'	26.00'	S50°16'38"E	36.77'
C60	90°00'00"	26.00'	40.84'	26.00'	S39°43'22"E	36.77'
C61	90°00'00"	26.00'	40.84'	26.00'	N50°16'38"W	36.77'
C62	90°00'00"	26.00'	40.84'	26.00'	N39°43'22"E	36.77'
C63	90°37'46"	23.00'	36.38'	23.25'	S49°37'45"E	32.97'
C64	89°22'17"	23.00'	35.88'	23.00'	S40°22'15"W	32.35'
C65	89°22'14"	15.00'	23.40'	14.84'	N40°02'15"E	21.10'
C66	43°41'38"	50.00'	38.13'	20.05'	N16°34'11"E	37.21'
C67	46°18'22"	50.00'	40.41'	21.38'	N61°34'11"E	39.32'

BASIS OF BEARING

N89°47'31"E - THE NORTH LINE OF ADJUSTED PARCEL 2 AS SHOWN ON THE RECORD OF SURVEY TO SUPPORT A BOUNDARY LINE ADJUSTMENT FOR NEVADA NORTHWEST, LLC, RECORDED DECEMBER 18, 2003 AS DOC. NO. 599848.

LEGEND

- △ FOUND 5/8" REBAR WITH PLASTIC CAP PLS 11172
- FOUND 1/2" IRON PIPE RE 446 PER DOC. NO. 27599
- FOUND 5/8" REBAR AS NOTED
- ∅ NOTHING FOUND OR SET
- ⊙ FOUND CENTERLINE MONUMENT IN WELL
- ⊙ SET CENTERLINE MONUMENT IN WELL
- ▲ SET 5/8" REBAR WITH PLASTIC CAP PLS 11172
- (RAD) RADIAL BEARING

SCALE: 1" = 60'

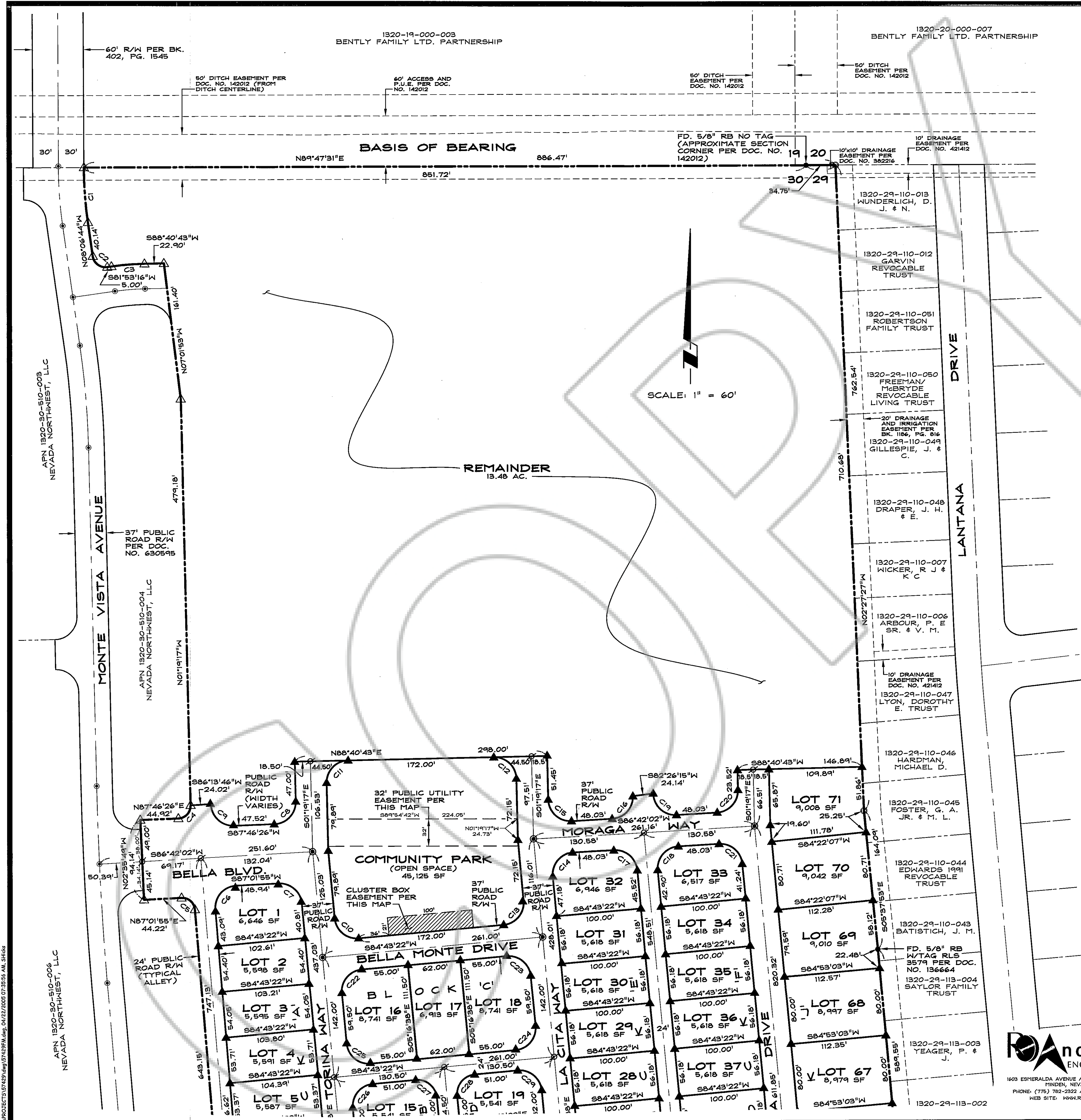
SHEET 3 OF 4

FINAL MAP
PD 02-04
 FOR
LA COSTA AT MONTE VISTA

LOCATED WITHIN PORTIONS OF SECTIONS 29 & 30,
 T.13N., R.20E., M.D.M.
 DOUGLAS COUNTY, NEVADA

Anderson
 ENGINEERING INC

1603 ESHERALDA AVENUE / POST OFFICE BOX 2224
 HINDEN, NEVADA 89423
 PHONE: (775) 782-2322 / FAX: (775) 782-7084
 WEB SITE: WWW.ANDERSONENGINEERING.COM



CURVE TABLE

CURVE	DELTA	RADIUS	LENGTH	TANGENT	CHD. BRG.	CHD. DIST.
C1	07°54'15"	470.00'	64.84'	32.47'	S04°09'37"E	64.79'
C2	90°00'00"	15.00'	23.56'	15.00'	S53°06'44"E	21.21'
C3	06°47'27"	329.50'	39.05'	19.55'	S85°16'59"W	39.03'
C4	89°05'43"	15.00'	23.33'	14.76'	N43°13'55"E	21.05'
C5	88°19'13"	15.00'	23.12'	14.57'	N48°48'28"E	20.90'
C6	91°40'47"	26.00'	41.60'	26.77'	S41°11'32"W	37.30'
C7	90°25'28"	26.00'	41.03'	26.91'	S50°22'22"W	36.91'
C8	90°10'13"	26.00'	40.92'	26.08'	N43°45'49"E	36.82'
C9	90°54'17"	26.00'	41.25'	26.41'	S46°46'25"E	37.06'
C10	90°00'00"	26.00'	40.84'	26.00'	S50°16'38"E	36.77'
C11	90°00'00"	26.00'	40.84'	26.00'	S43°40'43"W	36.77'
C12	90°00'00"	26.00'	40.84'	26.00'	N46°19'17"W	36.77'
C13	90°00'00"	26.00'	40.84'	26.00'	N39°43'22"E	36.77'
C14	91°58'40"	26.00'	41.74'	26.91'	S40°42'42"W	37.40'
C15	91°58'41"	26.00'	41.74'	26.91'	S47°18'57"E	37.40'
C16	88°01'19"	26.00'	39.94'	25.12'	N42°41'23"E	36.13'
C17	88°01'20"	26.00'	39.94'	25.12'	N49°17'18"W	36.13'
C18	91°58'40"	26.00'	41.74'	26.91'	S40°42'42"W	37.40'
C19	91°58'41"	26.00'	41.74'	26.91'	S47°18'57"E	37.40'
C20	88°01'19"	26.00'	39.94'	25.12'	N42°41'23"E	36.13'
C21	88°01'20"	26.00'	39.94'	25.12'	N49°17'18"W	36.13'
C22	90°00'00"	26.00'	40.84'	26.00'	S39°43'22"E	36.77'
C23	90°00'00"	26.00'	40.84'	26.00'	N50°16'38"W	36.77'
C24	90°00'00"	26.00'	40.84'	26.00'	N39°43'22"E	36.77'
C25	90°00'00"	26.00'	40.84'	26.00'	S50°16'38"E	36.77'
C26	90°00'00"	26.00'	40.84'	26.00'	S39°43'22"E	36.77'
C27	90°00'00"	26.00'	36.13'	23.00'	N50°16'38"W	32.53'
C28	90°00'00"	26.00'	36.13'	23.00'	S39°43'22"E	32.53'
C29	90°00'00"	26.00'	40.84'	26.00'	N50°16'38"W	36.77'
C30	90°00'00"	26.00'	40.84'	26.00'	N39°43'22"E	36.77'
C31	90°00'00"	44.50'	69.90'	44.50'	N39°43'22"E	62.93'
C32	90°00'00"	26.00'	40.84'	26.00'	S50°16'38"E	36.77'
C33	90°00'00"	26.00'	40.84'	26.00'	N39°43'22"E	36.77'
C34	90°00'00"	26.00'	40.84'	26.00'	S50°16'38"E	36.77'
C35	90°00'00"	44.50'	69.90'	44.50'	S50°16'38"E	62.93'
C36	37°58'51"	34.00'	22.54'	11.70'	S24°16'04"E	22.13'
C37	90°37'46"	23.00'	36.38'	23.25'	S49°57'45"E	32.71'
C38	34°44'39"	34.00'	20.62'	10.64'	S60°37'48"E	20.30'
C39	17°16'30"	34.00'	10.25'	5.16'	S86°38'23"E	10.21'
C40	90°00'00"	26.00'	40.84'	26.00'	N50°16'38"W	36.77'
C41	90°00'00"	26.00'	40.84'	26.00'	N39°43'22"E	36.77'
C42	90°00'00"	26.00'	40.84'	26.00'	S50°16'38"E	36.77'
C43	90°00'00"	26.00'	40.84'	26.00'	S39°43'22"E	36.77'
C44	26°15'06"	34.00'	15.58'	7.93'	N71°35'49"E	15.44'
C45	37°29'49"	34.00'	22.25'	11.54'	N39°43'22"E	21.86'
C46	26°15'05"	34.00'	15.58'	7.93'	N07°50'54"E	15.44'
C47	90°00'00"	35.00'	53.69'	35.00'	N39°43'22"E	53.74'
C48	90°00'00"	50.00'	73.54'	50.00'	N39°43'22"E	70.71'
C49	90°00'00"	23.00'	36.13'	23.00'	S50°16'38"E	32.53'
C50	43°41'38"	35.00'	26.69'	14.03'	S73°25'49"E	26.05'
C51	41°13'39"	25.00'	17.99'	9.40'	N74°39'49"E	17.60'
C52	41°13'39"	47.00'	33.82'	17.68'	S74°39'49"E	33.09'
C53	90°00'00"	26.00'	40.84'	26.00'	N39°43'22"E	36.77'
C54	90°00'00"	26.00'	40.84'	26.00'	N50°16'38"W	36.77'
C55	90°00'00"	26.00'	40.84'	26.00'	N39°43'22"E	36.77'
C56	90°00'00"	26.00'	40.84'	26.00'	N50°16'38"W	36.77'
C57	39°13'23"	150.00'	102.68'	53.45'	N21°55'03"W	100.69'
C58	31°38'00"	150.00'	82.82'	42.49'	N57°20'44"W	81.77'
C59	90°00'00"	26.00'	40.84'	26.00'	S50°16'38"E	36.77'
C60	90°00'00"	26.00'	40.84'	26.00'	S39°43'22"E	36.77'
C61	90°00'00"	26.00'	40.84'	26.00'	N50°16'38"W	36.77'
C62	90°00'00"	26.00'	40.84'	26.00'	N39°43'22"E	36.77'
C63	90°37'46"	26.00'	41.13'	26.29'	S49°57'45"E	36.91'
C64	89°22'14"	23.00'	35.88'	22.75'	S40°02'15"W	32.35'
C65	89°22'14"	15.00'	23.40'	14.84'	N40°02'15"E	21.10'
C66	43°41'38"	50.00'	38.13'	20.05'	N16°34'11"E	37.21'
C67	46°18'22"	50.00'	40.41'	21.38'	N61°34'11"E	39.32'

BASIS OF BEARING
 N89°47'31"E - THE NORTH LINE OF ADJUSTED PARCEL 2 AS SHOWN ON THE RECORD OF SURVEY TO SUPPORT A BOUNDARY LINE ADJUSTMENT FOR NEVADA NORTHWEST, LLC, RECORDED DECEMBER 18, 2003 AS DOC. NO. 599848.

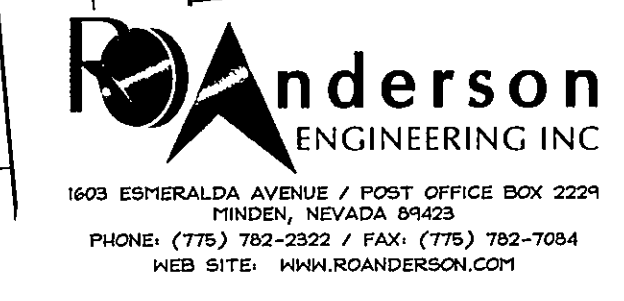
- LEGEND**
- △ FOUND 5/8" REBAR WITH PLASTIC CAP PLS 11172
 - FOUND 1/2" IRON PIPE RE 446 PER DOC. NO. 275999
 - FOUND 5/8" REBAR AS NOTED
 - ⊘ NOTHING FOUND OR SET
 - ⊙ FOUND CENTERLINE MONUMENT IN WELL
 - ⊚ SET CENTERLINE MONUMENT IN WELL
 - ▲ SET 5/8" REBAR WITH PLASTIC CAP PLS 11172
 - (RAD) RADIAL BEARING

SCALE: 1" = 60' SHEET 4 OF 4

**FINAL MAP
 PD 02-04
 FOR
 LA COSTA AT MONTE VISTA**

LOCATED WITHIN PORTIONS OF SECTIONS 29 & 30,
 T.13N., R.20E., M.D.M.
 DOUGLAS COUNTY, NEVADA

574-29-04
 57429FF1.dwg 02/14/05



Z:\PROJECTS\127493.dwg\127493.dwg_04/22/2005 07:35:56 AM SHL66