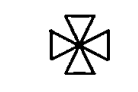

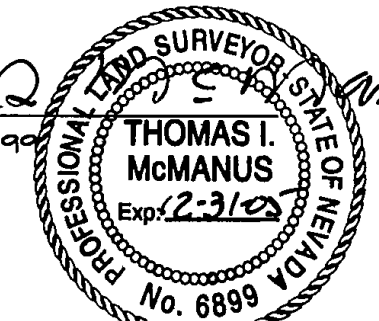


LEGEND

-  SECTION CORNER
-  ANNEXATION AREAS

SURVEYOR'S CERTIFICATE

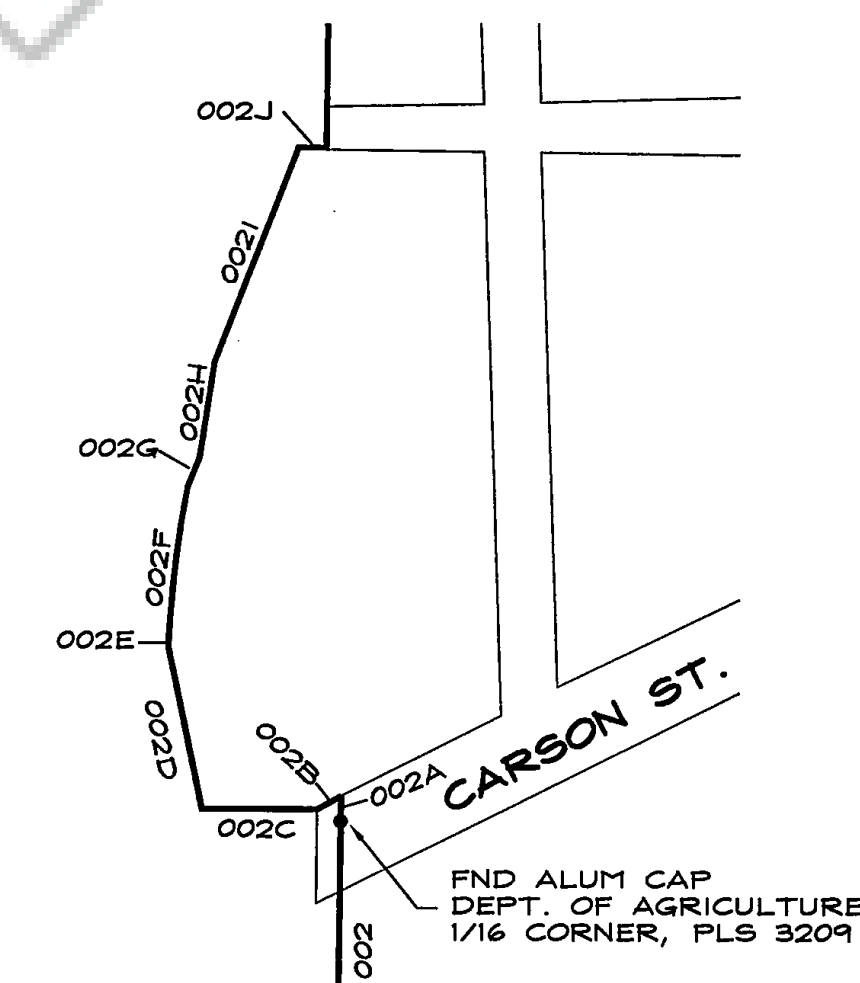
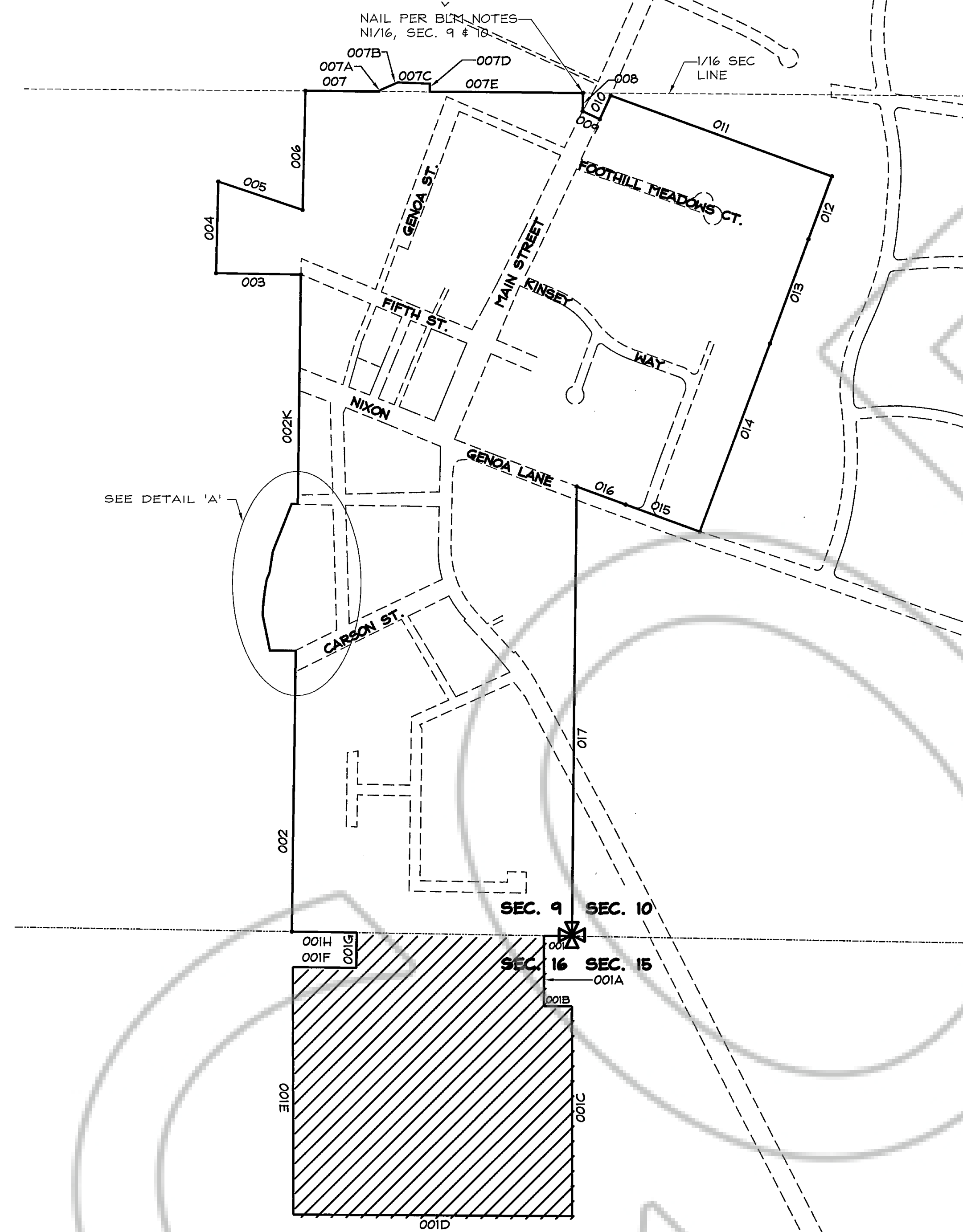
I, THOMAS I. McMANUS, A PROFESSIONAL LAND SURVEYOR LICENSED IN THE STATE OF NEVADA CERTIFY THAT:
 1) THIS PLAT DOES NOT REPRESENT AN ACTUAL SURVEY BUT HAS BEEN COMPILED FROM EXISTING RECORDED INFORMATION AND IS IN COMPLIANCE WITH TITLE 18, EXHIBIT "B" ENTITLED "GENOA TOWN BOUNDARY", ADOPTED AUGUST 4, 2005, BY THE DOUGLAS COUNTY BOARD OF COMMISSIONERS; AND
 2) THIS PLAT WAS PRESENTED TO AND APPROVED BY THE DOUGLAS COUNTY BOARD OF COMMISSIONERS ON THE 4TH DAY OF AUGUST, 2005.

Thomas I. McManus
 THOMAS I. McMANUS, P.L.S. 6899

 8-29-05

TOWN OF GENOA CERTIFICATE

I, BILL DONOHUE, CHAIRPERSON OF THE TOWN OF GENOA BOARD, CERTIFY THAT THIS MAP REPRESENTS THE TOWN OF GENOA BOUNDARY, AND THE ANNEXATIONS SHOWN HEREON HAVE BEEN APPROVED BY THE TOWN OF GENOA.

Bill Donohue 9-2-05
 BILL DONOHUE, CHAIRPERSON DATE
 TOWN OF GENOA



DETAIL 'A'
 NOT TO SCALE

RECORDER'S CERTIFICATE

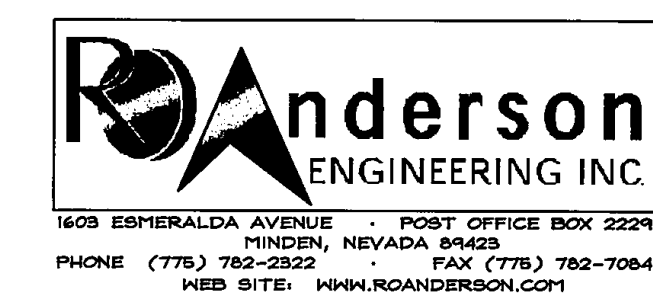
FILED FOR RECORD THIS 19 DAY OF September 2005 AT 1 MINUTES PAST 9 O'CLOCK A.M., IN BOOK 0905 OF OFFICIAL RECORDS, AT PAGE 444, DOCUMENT NO. 455350 RECORDED AT THE REQUEST OF THE TOWN OF GENOA.

Barbara Clark, Deputy
 DOUGLAS COUNTY RECORDER

SCALE: 1" = 400' SHEET 1 OF 1

TOWN OF GENOA BOUNDARY MAP

LOCATED WITHIN PORTIONS OF SECTIONS 9, 10, AND 16, T.13N., R.19E., M.D.M. DOUGLAS COUNTY, NEVADA



Z:\PROJECTS\1048000.dwg 1048000 Genoa Boundary Map.dwg, 08/29/2005 08:34:31 AM, shidac