

OFFICIAL RECORD

Requested By:
SYNCON HOMES

APN: 1420-35-311-017
1420-35-311-018
1420-35-311-019
1420-35-311-020

Douglas County - NV
Werner Christen - Recorder

Page: 1 Of 8 Fee: 21.00
BK-1005 PG-14726 RPTT: 0.00



**RECORDING REQUESTED BY, AND
WHEN RECORDED, RETURN TO:**

Syncon Homes,
Attn: Cheri Glassick, Esq.
2221 Meridian Boulevard, #A
Minden, Nevada 89423

Grant of Public Utility Easement

This Grant of Public Utility Easement is made as of the 5 day of July, 2005, by and between Skyline Ranch III, LLC, a Nevada limited liability company ("Grantor"); and Douglas County, a political subdivision of the State of Nevada, and any public utility operating in Douglas County, Nevada, as "public utility" is defined in Section 704.020 of the Nevada Revised Statutes (or its successor statute) (collectively, "Grantee"), with reference to the following facts and is as follows:

A. Grantor is the owner of the property comprising the servient estate, which real property is situate in Douglas County, Nevada, and is more particularly described in **Exhibit "A"** hereto (the "Property").

B. Grantor desires to grant a public utility easement to Grantee as more particularly set forth below.

NOW, THEREFORE, for valuable consideration, receipt of which is hereby acknowledged, Grantor hereby grants to Grantee a perpetual, non-exclusive easement over, across and through that portion of the Property more particularly described in **Exhibit "B"** hereto ("Easement Area"), which Easement Area is depicted on **Exhibit "C"** hereto, for public utility purposes, including, without limitation, the installation, construction, repair, maintenance, and replacement of public utility improvements within the Easement Area, such as, without limitation, gas, electric, water, sewer, telephone, storm drain, and cable TV lines

and facilities owned or maintained (or to be owned or maintained) by any public utility (as defined in Section 704.020 of the Nevada Revised Statutes (or its successor statute)), together with a perpetual, non-exclusive access easement over the Easement Area to enjoy such rights.

IN WITNESS WHEREOF this Grant of Public Utility Easement is executed as of the date first written above.

GRANTOR:

**SKYLINE RANCH III, LLC,
a Nevada limited liability company**

**By: SYNCON HOMES,
a Nevada corporation**

Its: Manager

By: Andrew W Mitchell
ANDREW W. MITCHELL

Its: Pres

STATE OF NEVADA)

COUNTY OF DOUGLAS)

This instrument was acknowledged before me on Oct. 31, 2005, by Andrew W. Mitchell, as President of Syncon Homes, a Nevada corporation, as Manager of Skyline Ranch III, LLC, a Nevada limited liability company.



Joanne Detter
Notary Public
My Commission Expires: 5/9/09

Exhibit "A"

Legal Description of the Property

All that real property located in Douglas County, Nevada, described as follows:

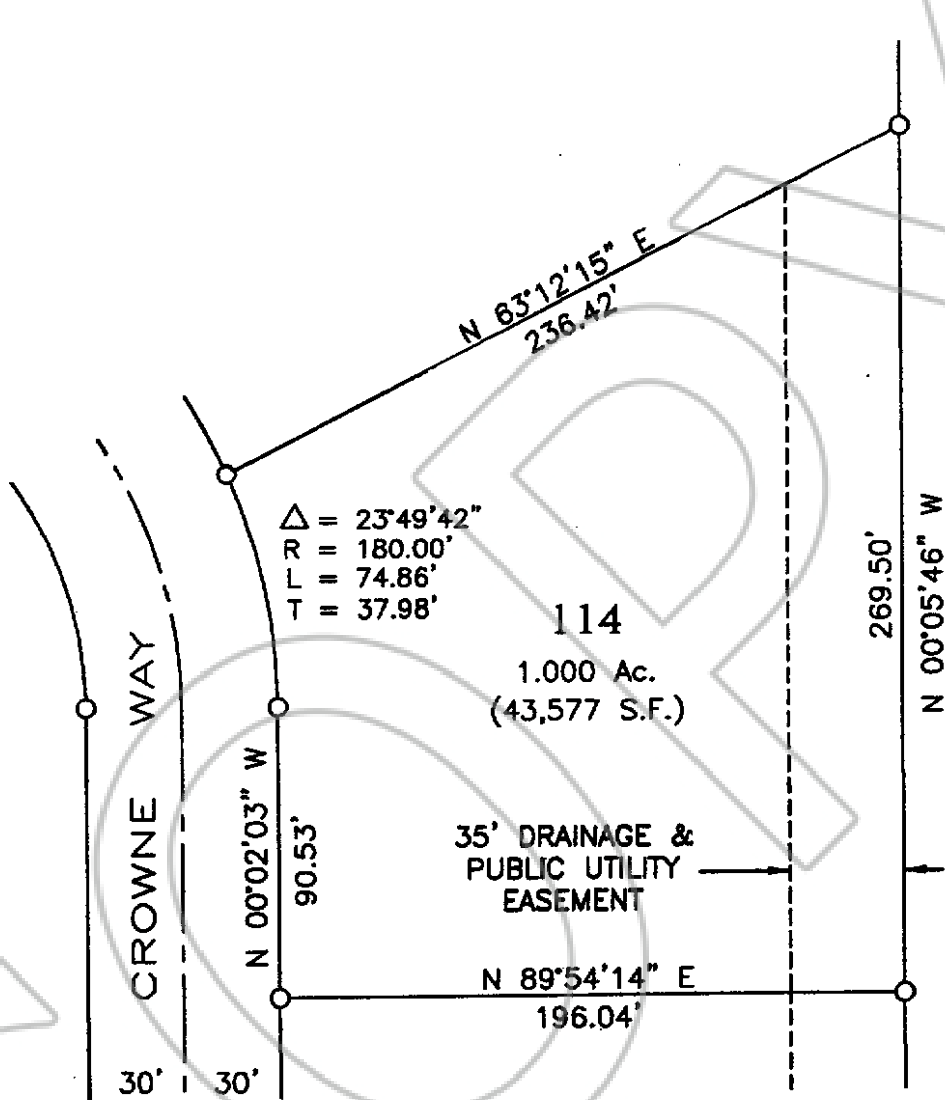
Lots 114, 115, 116 and 117, as shown on the Final Subdivision Map FSM#94-04-03 for Skyline Ranch, Phase 3, filed for record in the Office of the Douglas County Recorder on July 5, 2005, in Book 0705, at Page 1491, as File Number 648689.

Exhibit "B"

Legal Description of Easement Area

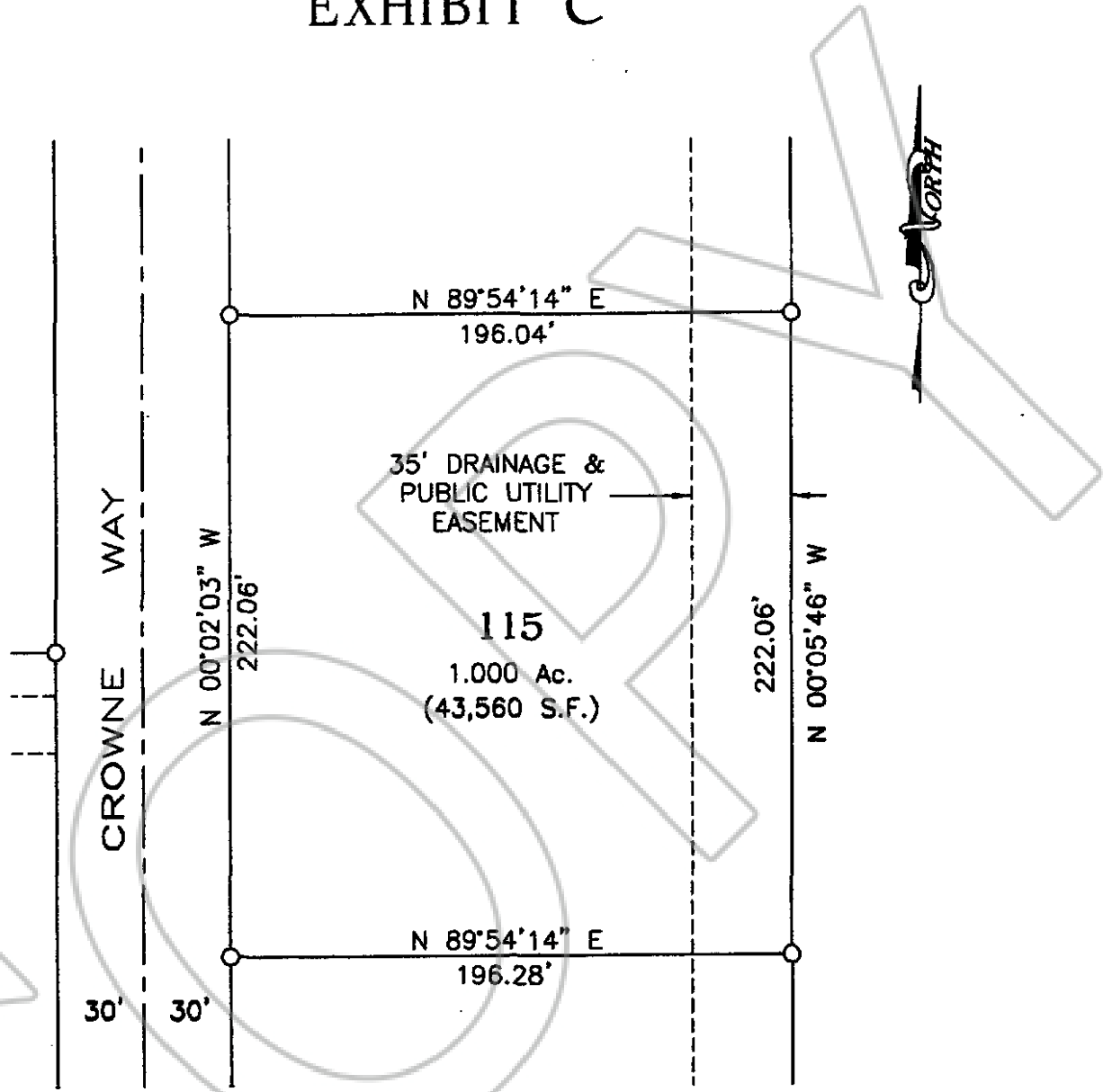
An easement for Public Utilities in, over and across the Easterly 35 feet of lots 114 thru 117, inclusive, as well as 5 feet on both sides of all side and rear lot lines, and 7.5 feet adjacent to all street right of ways, as depicted and shown on the Final Subdivision Map FSM #94-04-03 for Skyline Ranch Phase 3, filed for record in the Office of the County Recorder of Douglas County on July 5, 2005 in Book 0705, at page 1491, as file number 648689

EXHIBIT C



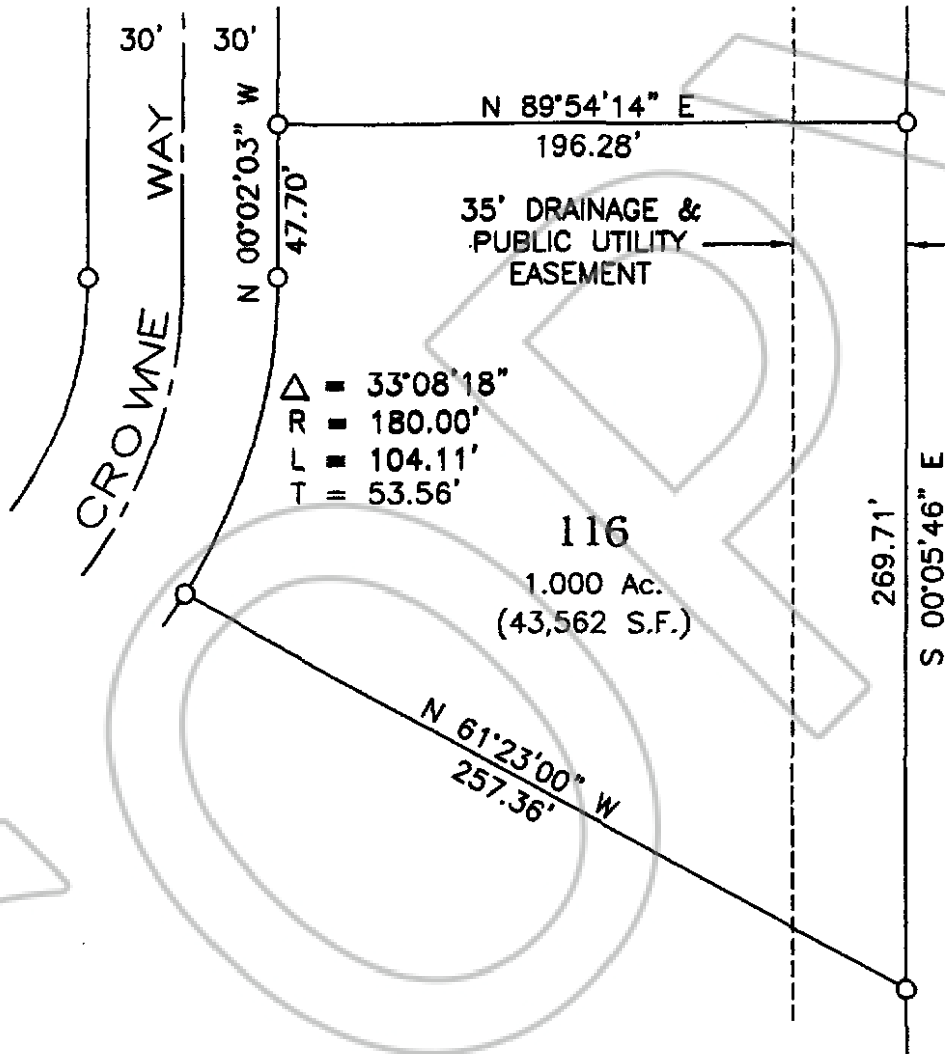
WESTERN
 ENGINEERING & SURVEYING SERVICES
 3032 SILVER SAGE DRIVE
 CARSON CITY, NEVADA 89701
 (775) 884-3200 FAX (775) 884-3211

EXHIBIT C



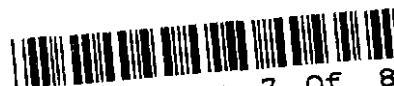
WESTERN
ENGINEERING & SURVEYING SERVICES
3032 SILVER SAGE DRIVE
CARSON CITY, NEVADA 89701
(775) 884-3200 FAX (775) 884-3211

EXHIBIT C



WESTERN
ENGINEERING & SURVEYING SERVICES

3032 SILVER BASK DRIVE
CARSON CITY NEVADA 89701
(775) 884-3200 FAX (775) 884-3211

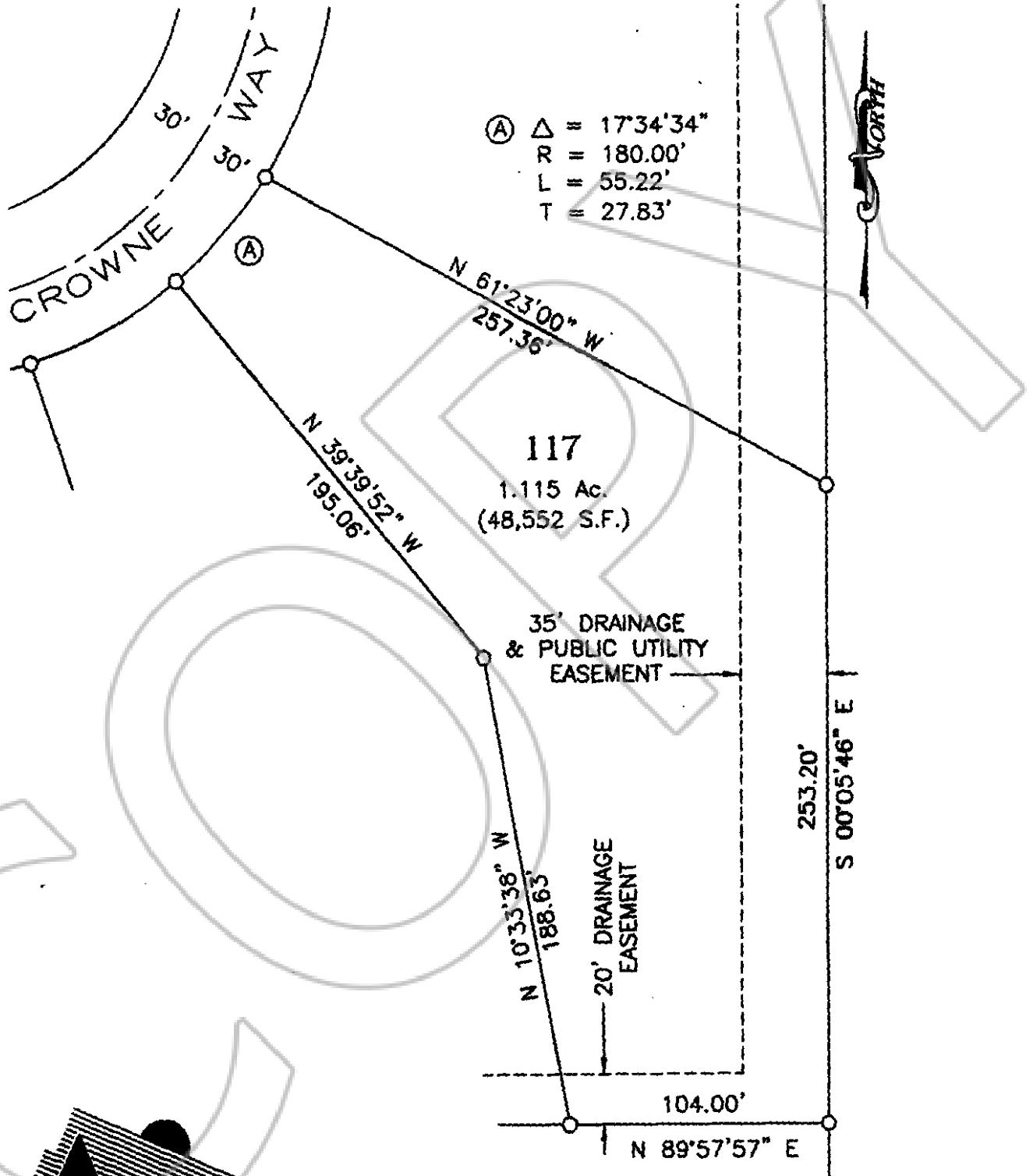


0659368

Page: 7 of 8

BK- 1005
PG- 14732
10/31/2005

EXHIBIT C




WESTERN
 ENGINEERING & SURVEYING SERVICES
 3032 SILVER SAGE DRIVE
 CARSON CITY - NEVADA 89701
 (775) 864-3220 FAX (775) 864-3211

