

SCALE: 1" = 100'

LEGEND

- FOUND AS NOTED
- SET 3/4" IP & PLUG, PLS 3519 OR AS NOTED
- (M) MEASURED
- (C) COMPUTED
- (R) RECORD
- IP IRON PIPE
- CIP CAPPED IRON PIPE

BASIS OF BEARING

THE MERIDIAN OF THIS SURVEY IS IDENTICAL TO THAT PARCEL MAP, DOCUMENT NO. 33205.

REFERENCES

- R.O.S. DOC. NO. 00394
- P.M. DOC. NO. 33205
- R.O.S. DOC. NO. 27150
- R.O.S. DOC. NO. 225967

SURVEYOR'S CERTIFICATE

I, RONALD W. TURNER, A PROFESSIONAL LAND SURVEYOR LICENSED IN THE STATE OF NEVADA, CERTIFY THAT:

- THIS IS A TRUE AND ACCURATE REPRESENTATION OF THE LANDS SURVEYED UNDER MY SUPERVISION AT THE INSTANCE OF RONALD W. TURNER.
- THE LANDS SURVEYED LIE WITHIN A PORTION OF SECTION 15, T.14 N., R.18 E., M.D.M., AND THE SURVEY WAS COMPLETED ON SEPTEMBER 7, 2005.
- THIS PLAT COMPLIES WITH THE APPLICABLE STATE STATUTES AND ANY ANY LOCAL ORDINANCE, AND IS NOT IN CONFLICT WITH THE PROVISIONS OF NRS 278.010 TO 278.630, INCLUSIVE, AND SECTIONS 2 & 3 OF CHAPTER 479 OF THE SIXTY-SIXTH LEGISLATIVE SESSION.
- THE MONUMENTS ARE OF THE CHARACTER SHOWN AND OCCUPY THE POSITIONS INDICATED.

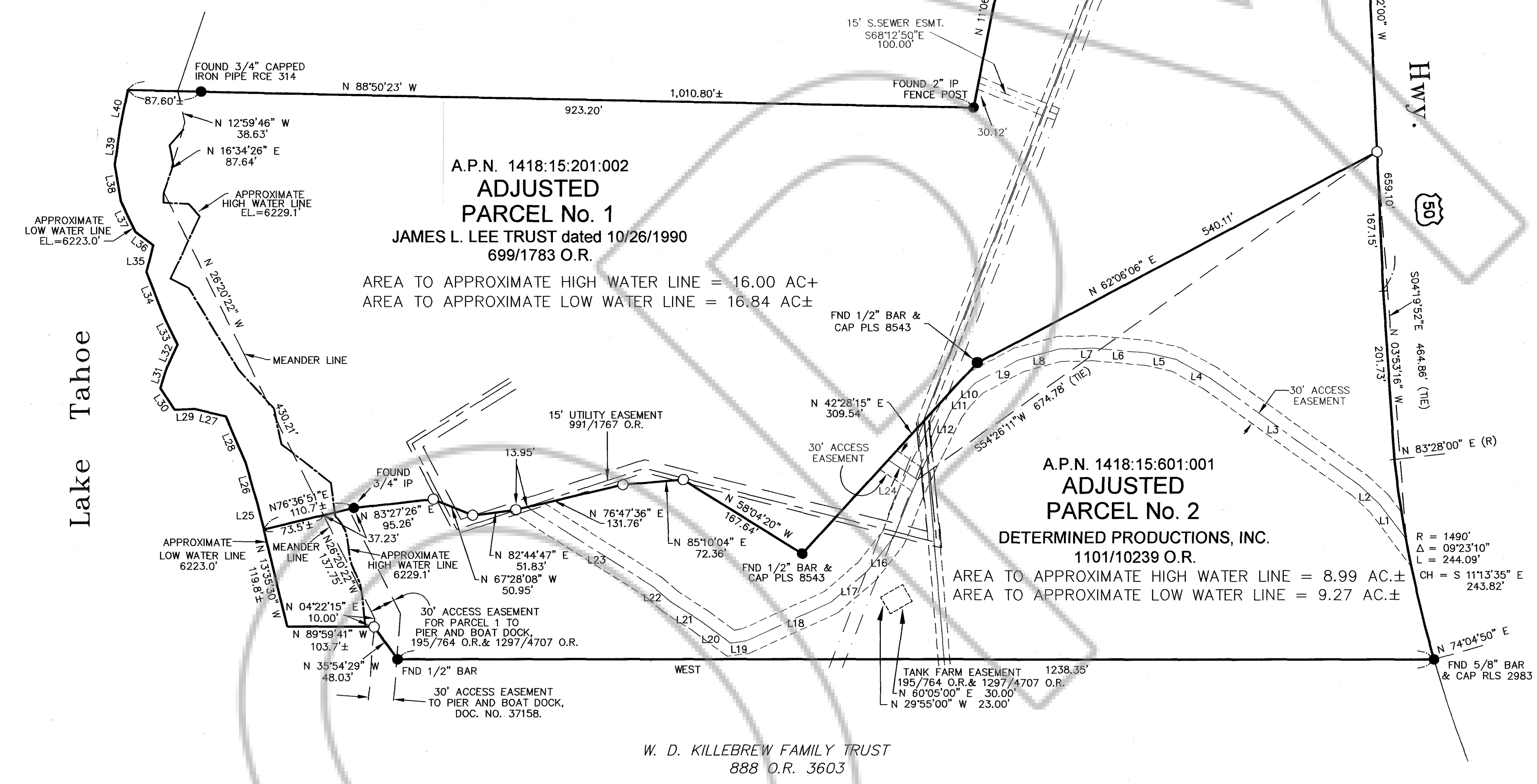
Ronald W. Turner
 RONALD W. TURNER, P.L.S. 3519

 11/04/05

APPROXIMATE LOW WATER LINE TABLE

LINE	BEARING	LENGTH
L25	N13°35'25"W	31.90'
L26	N16°03'42"W	50.35'
L27	N77°07'13"W	37.86'
L28	N23°26'00"W	61.05'
L29	N87°23'17"E	23.98'
L30	N33°27'09"W	30.78'
L31	N16°59'51"E	26.26'
L32	N24°38'41"E	30.22'
L33	N25°58'37"W	40.36'
L34	N21°06'47"W	53.60'
L35	N13°57'13"E	32.98'
L36	N52°29'50"W	26.66'
L37	N25°42'00"W	40.17'
L38	N09°29'01"W	44.58'
L39	N07°56'31"E	42.82'
L40	N11°30'16"E	48.27'

C.H. & S.L. BUCKLEY
199 O.R. 1560

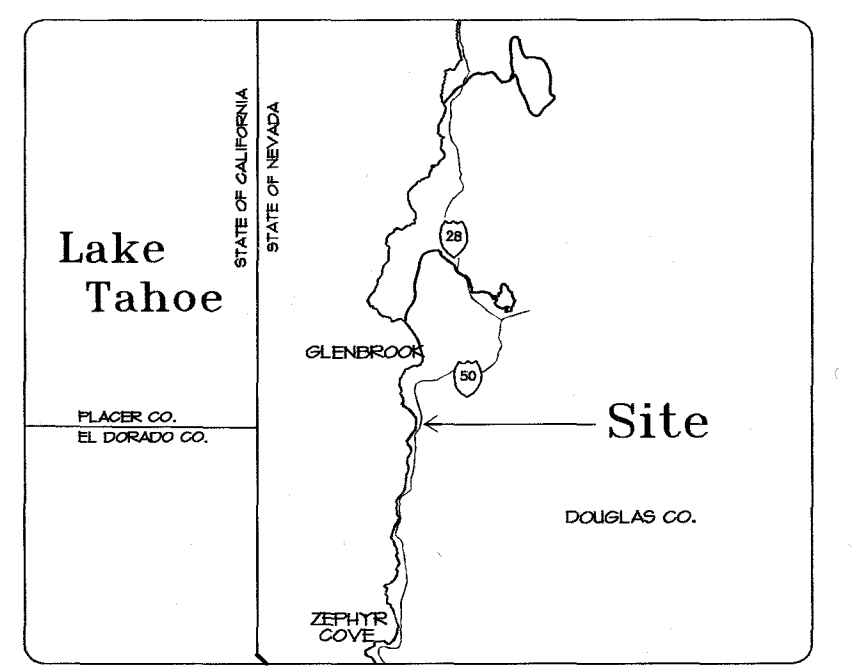


W. D. KILLEBREW FAMILY TRUST
888 O.R. 3603

Enter Text Here

NOTE

THIS PURPOSE OF THIS MAP IS TO AMEND THAT CERTAIN RECORD OF SURVEY FOR BOUCHER AND LEE, RECORDED JUNE 7, 2000 IN BOOK 0600 AT PAGE 1580 AS DOCUMENT NO. 493617 IN ORDER TO AMEND THE SOUTHERLY PROPERTY LINE OF ADJUSTED PARCEL 2 FROM THE MEANDER LINE WESTERLY AND THE AREA OF ADJUSTED PARCEL 2 TO THE APPROXIMATE LOW WATER LINE, AND TO SHOW THE AREA OF ADJUSTED PARCELS 1 AND 2 TO THE APPROXIMATE HIGH WATER LINE.



VICINITY MAP

EASEMENT LINE TABLE

LINE	BEARING	LENGTH
L1	N 37°22'40" W	53.14'
L2	N 54°41'47" W	31.14'
L3	N 54°14'41" W	221.56'
L4	N 61°14'37" W	45.71'
L5	N 77°09'41" W	36.62'
L6	N 85°12'47" W	64.29'
L7	S 88°44'09" W	40.52'
L8	S 75°03'46" W	49.47'
L9	S 61°24'23" W	58.51'
L10	S 45°24'47" W	24.00'
L11	S 36°42'00" W	20.91'
L12	S 26°07'00" W	51.37'
L13	S 28°44'51" W	15.86'
L14	S 24°09'17" W	46.46'
L15	S 21°28'01" W	53.30'
L16	S 38°18'40" W	50.70'
L17	S 49°12'43" W	56.75'
L18	S 65°26'42" W	112.24'
L19	S 81°50'04" W	18.04'
L20	S 53°39'41" W	44.65'
L21	N 86°57'50" W	43.53'
L22	N 48°56'41" W	29.31'
L23	N 57°41'46" W	179.68'
L24	S 56°00'00" E	42.01'

COUNTY RECORDER'S CERTIFICATE

FILED FOR RECORD THIS 15 DAY OF November 2005, AT 6 MINUTES PAST 1 O'CLOCK P.M., IN BOOK 105 PAGE 66748, DOCUMENT NO. 660748 IN THE OFFICIAL RECORD OF DOUGLAS COUNTY, NEVADA AT THE REQUEST OF RONALD W. TURNER.

Colleen Fehal - Deputy
 DOUGLAS COUNTY RECORDER

AUGUST, 2005
SHEET 1 OF 1

AMENDED RECORD OF SURVEY

FOR
ROBERT M. LEE TRUST dated 10/26/1990
& DETERMINED PRODUCTIONS, INC.

LOCATED IN PORTION OF THE N 1/2 OF SECTION 15, T.14., R.18E., M.D.M. DOUGLAS COUNTY, NEVADA

TURNER & ASSOCIATES, INC.
 LAND SURVEYING
 (775) 588-5658
 FAX (775) 588-9296
 308 DORLA COURT, SUITE 203 - ROUND HILL, NEVADA 89448
 P.O. BOX 5067 - STATELINE, NEVADA 89449