

15-V-52

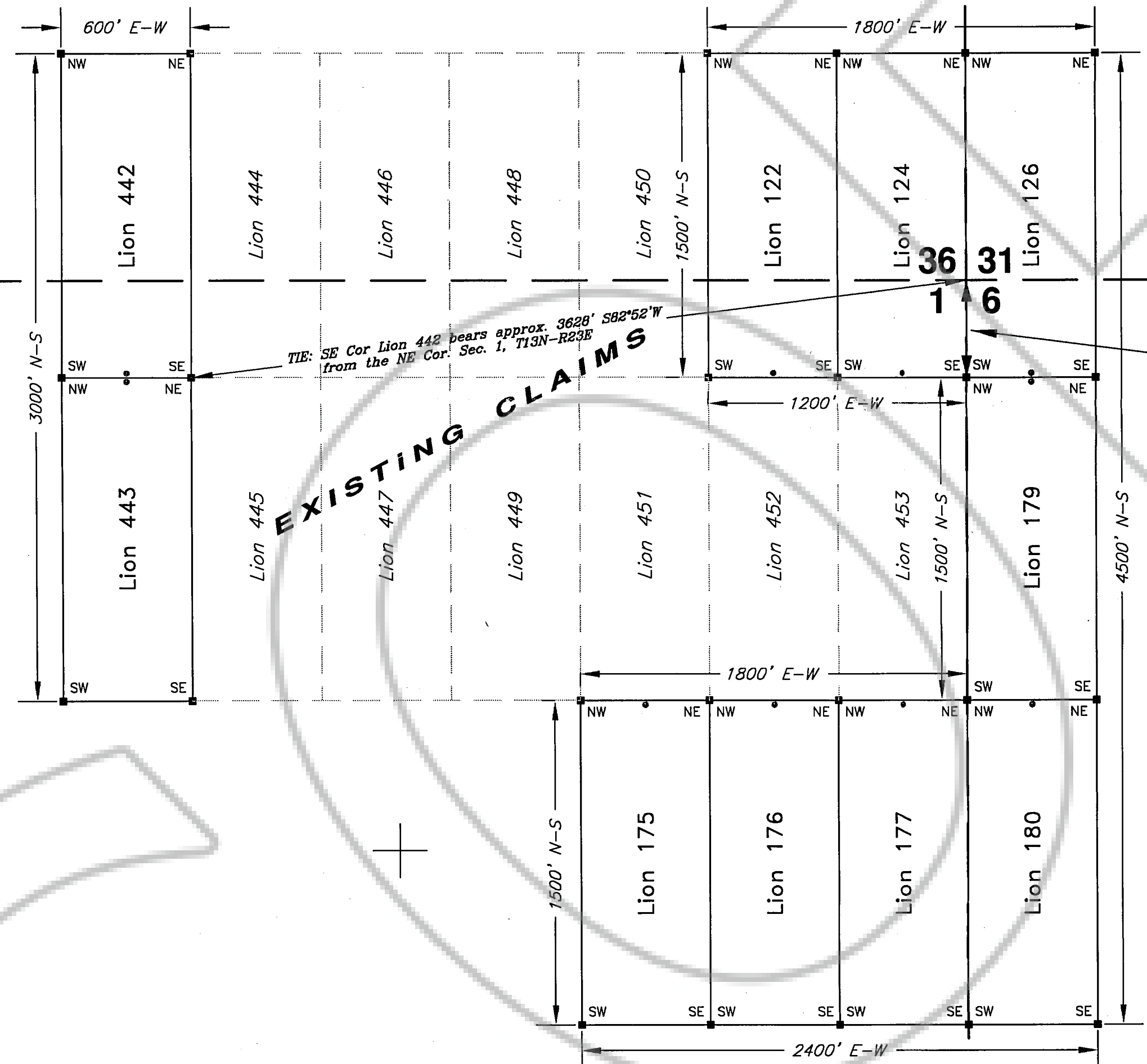
35 36
2 1

R 23 E
R 24 E

T 14 N
T 13 N

2 1
11 12

1 6
12 7



EXPLANATION

- Monuments of Location are set with 2"x2"x4' wood posts.
 - Claim corners are set with 2"x2"x4' wood posts.
- All claims measure 600' x 1500'.
- Monuments of Location are set 10' into claim from end center.

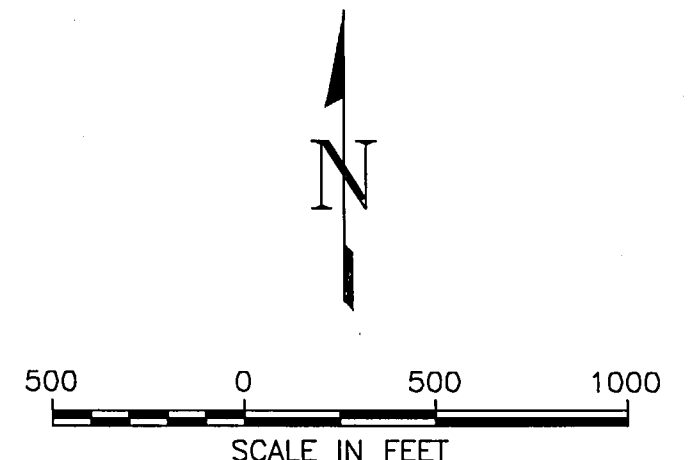
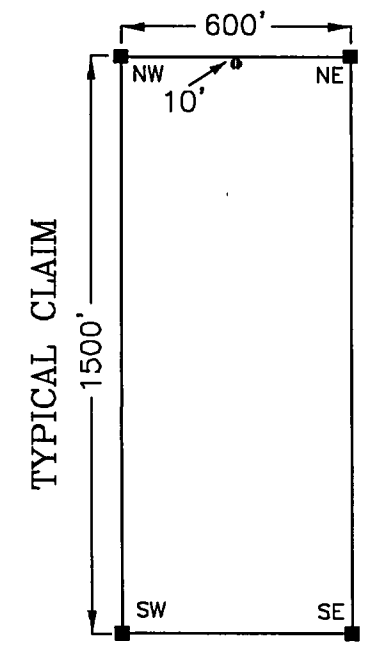
LOCATION DATE:
 Lion 122, 124, 126,
 Lion 175-177, 179-180, } November 1, 2005
 Lion 442-443

LOCATOR:
 Nevada Eagle Resources, LLC
 P. O. Box 18127
 Reno, NV 89511

TIES:
 The SE Corner of Lion 124 bears approximately 450' due South from the NW Corner of Section 1, T13N-R23E, Douglas County, Nevada
 The SE Corner of Lion 124 is common with the NE Corner of existing Lion 453 lode mining claim.

The SE Corner of Lion 442 bears approximately 3628' S82°52'W from the NE Corner of Section 1, T13N-R23E, Douglas County, Nevada

The SE Corner of Lion 442 is common with the SW Corner of existing Lion 444 lode mining claim.



Lion 122, 124, 126,
 Lion 175-177, 179-180
 and Lion 442-443
 Lode Mining Claims

DOC # 0666079
 01/20/2006 09:50 AM Deputy: KJL
 OFFICIAL RECORD
 Requested By:
 NEVADA EAGLE RESOURCES LLC
 Douglas County - NV
 Werner Christen - Recorder
 Page: 1 Of 1 Fee: 154.00
 BK-0106 PG-6615 RPT: 0.00

Sec. 1, T13N-R23E and Sec. 6, T13N-R24E and Sec. 36, T14N-R23E and Sec. 31, T14N-R24E, M.D.B.&M., Douglas County, Nevada

Drawn By: JAT
 Drawing: Lion122etc/Clms.DWG
 Layout: 500plot
 Date: November 14, 2005

