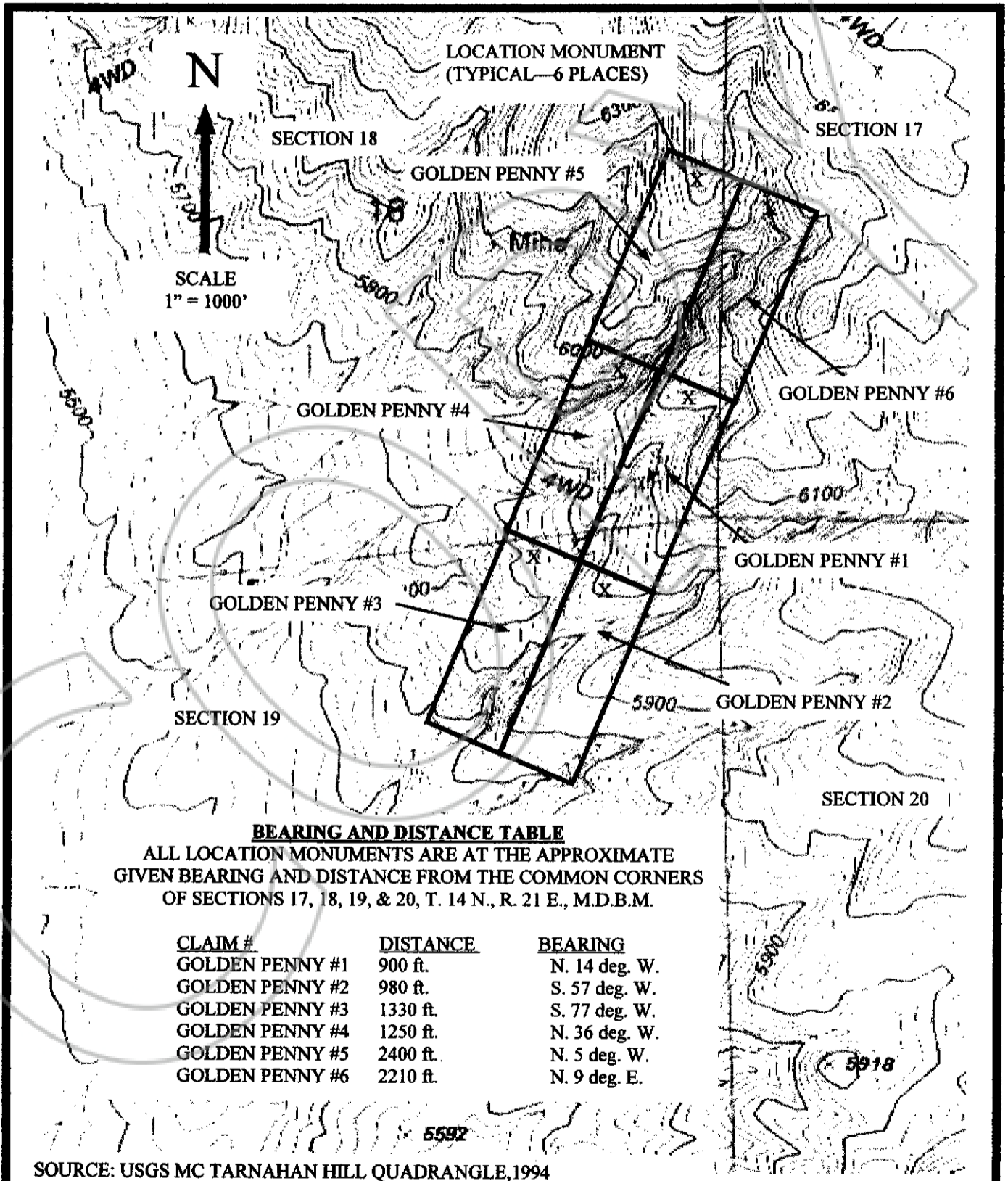


94

Douglas County - NV
Werner Christen - Recorder

Page: 1 Of 1 Fee: 94.00
BK-0406 PG- 3612 RPTT: 0.00



ROBISON ENGINEERING COMPANY	MAP OF GOLDEN PENNY MINING CLAIMS LOCATED IN PORTIONS OF SECTIONS 17, 18, & 19, T. 14 N., R. 21 E. M.D.B.M. DOUGLAS COUNTY, NEVADA	FIGURE
DATE: APRIL 8, 2006		1
PROJECT NO. ROBISON/CERRUTI		

✓ Gil Cerruti
3196 Washoe Springs
Minden NV 89423