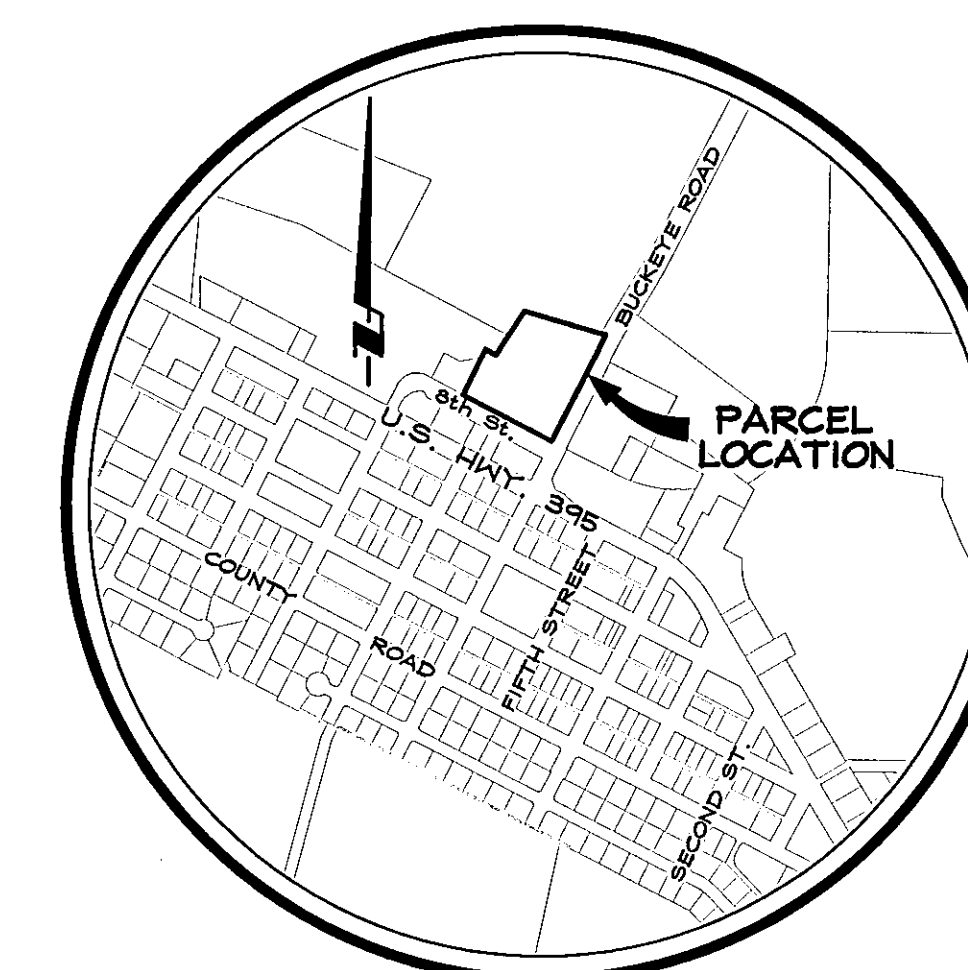


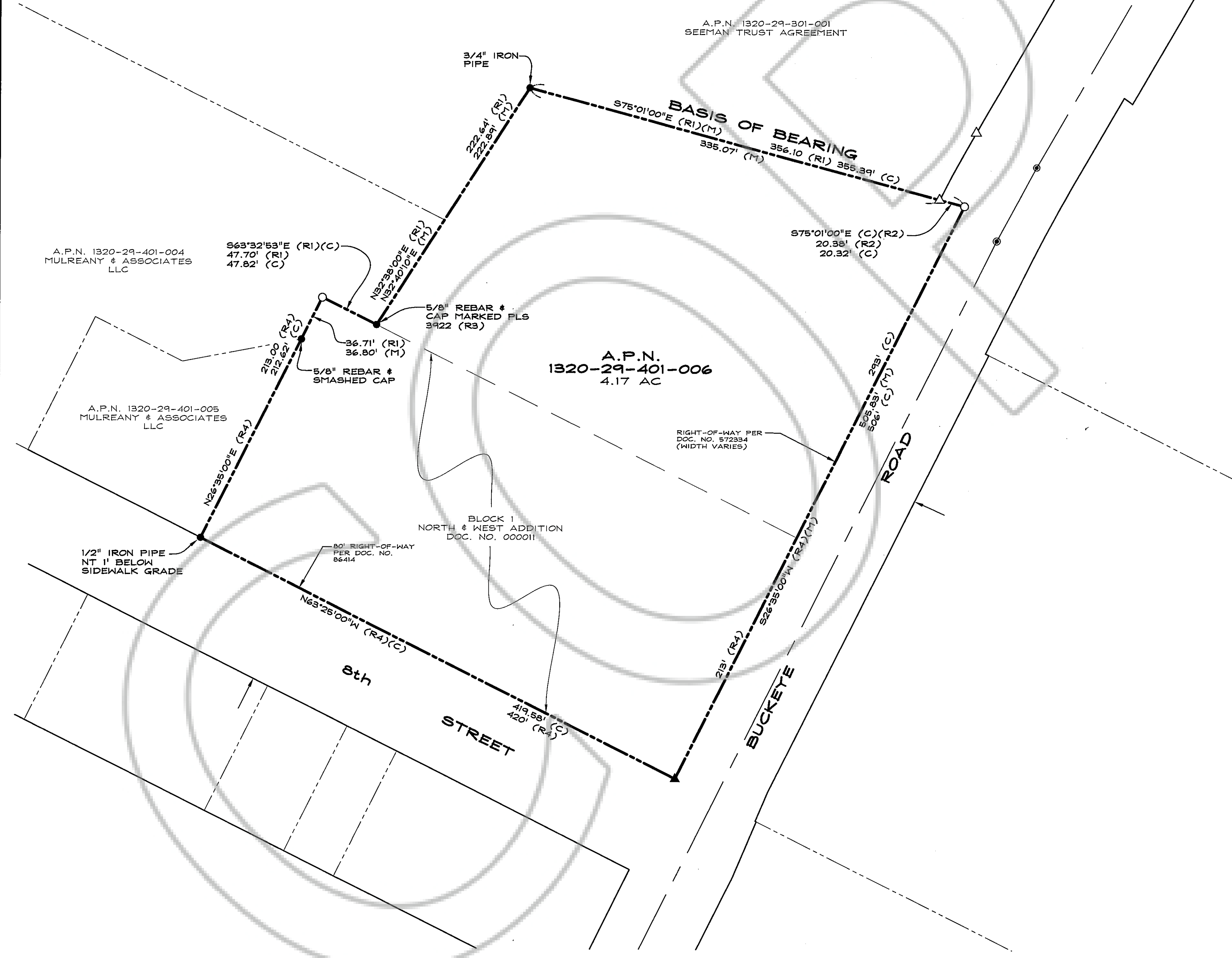
LEGEND

- CENTERLINE MONUMENT IN WELL, 5/8 REBAR WITH BRASS CAP PER DOC. NO. 572334
- SET PK NAIL AND WASHER, PLS 6899
- ▲ SET 5/8" REBAR WITH PLASTIC CAP PLS 6899
- △ FOUND 5/8" REBAR WITH PLASTIC CAP PLS 6899
- FOUND POSITION AS INDICATED
- (M) MEASURED POSITION
- (C) CALCULATED POSITION
- (R1) RECORD INFORMATION PER MAP SHOWING THE TOWN BOUNDARIES OF THE TOWN OF MINDEN, RECORDED SEPTEMBER 12, 1962 AS DOCUMENT NO. 20830
- (R2) RECORD OF SURVEY FOR BUCKEYE ROAD RECORDED APRIL 3, 2003 AT BOOK 0403, PAGE 1618, AS DOCUMENT NO. 572334
- (R3) ANNEX MAP #2 FOR MULREANY & ASSOCIATES RECORDED AUGUST 6, 1987 AT BOOK 0887, PAGE 610, AS DOCUMENT NO. 159754
- (R4) MAP OF NORTH & WEST ADDITIONS TO THE TOWN OF MINDEN DATED AUGUST 1905, DOCUMENT NO. 000011



VICINITY MAP
NO SCALE

SCALE: 1" = 50'



BASIS OF BEARING

S75°01'00"E- THE NORTH BOUNDARY LINE AS SHOWN ON "MAP SHOWING THE TOWN BOUNDARIES OF THE TOWN OF MINDEN", DOCUMENT NUMBER 20830.

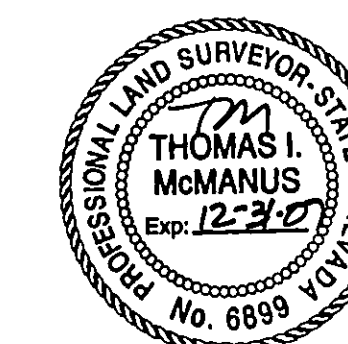
NOTES

AREA: 4.17 ACRES
THIS MAP IS NOT IN CONFLICT WITH N.R.S. 278.010 TO 278.630 INCLUSIVE.

SURVEYOR'S CERTIFICATE

I, THOMAS I. McMANUS, A PROFESSIONAL LAND SURVEYOR LICENSED IN THE STATE OF NEVADA CERTIFY THAT:

- 1) THIS PLAT REPRESENTS THE RESULTS OF A SURVEY CONDUCTED UNDER MY DIRECT SUPERVISION AT THE INSTANCE OF DOUGLAS COUNTY.
- 2) THE LANDS SURVEYED LIE WITHIN SECTION 32, T.13N., R.20E., M.D.M. AND THE SURVEY WAS COMPLETED ON 4-19-06.
- 3) THIS PLAT COMPLIES WITH THE APPLICABLE STATE STATUTES AND ANY LOCAL ORDINANCE IN EFFECT ON THE DATE THAT THE GOVERNING BODY GAVE ITS FINAL APPROVAL.
- 4) THE MONUMENTS DEPICTED ON THE PLAT ARE OF THE CHARACTER SHOWN, OCCUPY THE POSITIONS INDICATED AND ARE OF SUFFICIENT NUMBER AND DURABILITY.



Thomas I. McManus
THOMAS I. McMANUS, P.L.S. 6899

4-21-06

RECORDER'S CERTIFICATE

FILED FOR RECORD THIS 27 DAY OF April, 2006, AT 06 MINUTES PAST 9 O'CLOCK A.M., IN BOOK 0406 OF OFFICIAL RECORDS AT PAGE 9133, DOCUMENT NO. 673541 RECORDED AT THE REQUEST OF DOUGLAS COUNTY.

Pamela Krenenberg, Deputy
DOUGLAS COUNTY RECORDER

SCALE: 1" = 50' SHEET 1 OF 1

RECORD OF SURVEY
FOR
DOUGLAS COUNTY

LOCATED WITHIN A PORTION OF
SECTION 32, T.13N., R.20E., M.D.M.
DOUGLAS COUNTY, NEVADA

RO Anderson

1603 ESHERALDA AVENUE / POST OFFICE BOX 2229
MINDEN, NEVADA 89423
PHONE: (775) 782-2322 / FAX: (775) 782-7084
WEB SITE: WWW.ROANDERSON.COM

0110-059-05
0110S-RS05.dwg 04/20/06