

VICINITY MAP  
NO SCALE

A.P.N. 1320-04-001-013  
AVIATION WAY ASSOCIATES, LLC

A.P.N. 1320-04-001-036  
SMALL, STEVEN H. & KAREN S.

**NOTES**

AREA: 2.24 ACRES

THIS MAP IS A DIVISION OF LOTS 42 & 43 AS SHOWN ON RECORD OF SURVEY NO. 7 FOR CARSON VALLEY BUSINESS PARK, PHASE 2 RECORDED JULY 27, 2004 AS DOCUMENT NO. 619925 AND THEN CONSOLIDATED BY THE DEED RESTRICTION FOR A LOT CONSOLIDATION RECORDED MARCH 31, 2006 IN BK. 0306, AT PG. 13331.

THIS RECORD OF SURVEY HAS BEEN PREPARED TO INDICATE THE LIMITS OF UNITS A THROUGH K, WHICH ARE CONTAINED WITHIN THE CARSON VALLEY BUSINESS PARK, PHASE 2 RECORDED SEPTEMBER 3, 1998 AS DOC. NO. 448664. THE CARSON VALLEY BUSINESS PARK FINAL SUBDIVISION MAP WAS PREPARED IN COMPLIANCE WITH N.R.S. 278.325.

THIS MAP IS NOT IN CONFLICT WITH N.R.S. 278.010 TO 278.630 INCLUSIVE.

UNITS A THROUGH K ARE SUBJECT TO THE "DECLARATION OF COVENANTS, CONDITIONS, RESTRICTIONS AND RESERVATION OF EASEMENTS FOR LOT 42 BUSINESS PARKWAY ASSOCIATION" TO RECORD CONCURRENTLY WITH THIS MAP.

THE PARCELS SHOWN HEREON LIE WITHIN THE SHADED "X" FLOOD ZONE AS SAID PARCELS PLOT BY SCALE ON THE F.E.M.A. MAP PANEL 32005C0090 F, NOVEMBER 8, 1999.

THE PARCELS SHOWN HEREON THIS RECORD OF SURVEY ARE SUBJECT TO A SIERRA PACIFIC POWER COMPANY EASEMENT PER BK. 0705, PG. 11725.

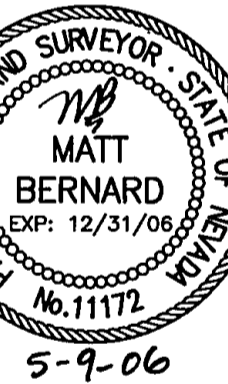
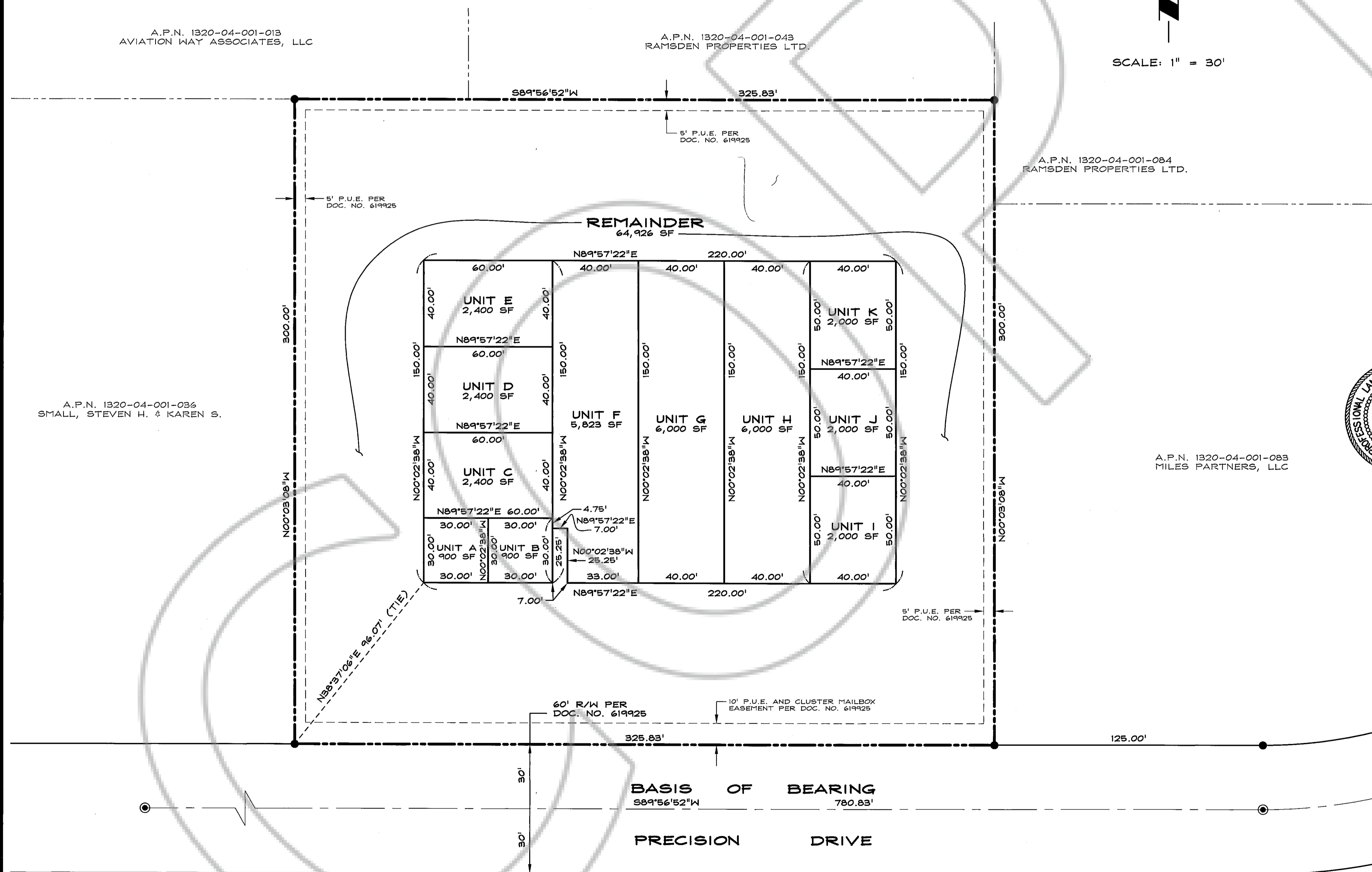
**LEGEND**

- FOUND 5/8" REBAR WITH PLASTIC CAP PLS 3209
- ⊙ FOUND MONUMENT IN WELL
- ⊥ NOTHING SET AT BUILDING ANGLE POINTS AND CORNERS
- P.U.E. PUBLIC UTILITY EASEMENT

**BASIS OF BEARING**

S89°56'52"W - THE CENTERLINE OF PRECISION DRIVE AS SHOWN ON RECORD OF SURVEY NO. 7 FOR CARSON VALLEY BUSINESS PARK, PHASE 2 RECORDED JULY 27, 2004 AS DOCUMENT NO. 619925.

SCALE: 1" = 30'



*Matt Bernard*  
MATT BERNARD, P.L.S. 11172

**RECORDER'S CERTIFICATE**

FILED FOR RECORD THIS 18 DAY OF MAY, 2006, AT 20 MINUTES PAST 9 O'CLOCK A.M., IN BOOK 0506 OF OFFICIAL RECORDS AT PAGE 6879, DOCUMENT NO. 675776. RECORDED AT THE REQUEST OF MILES PARTNERS, LLC.

*Colleen Fernal - Deputy*  
DOUGLAS COUNTY RECORDER

SCALE: 1" = 30'

SHEET 1 OF 1

RECORD OF SURVEY  
FOR  
CARSON VALLEY BUSINESS PARK  
(A COMMERCIAL SUBDIVISION)  
MILES PARTNERS, LLC

LOCATED WITHIN A PORTION OF SECTION 4,  
T.13N., R.20E., M.D.M.  
DOUGLAS COUNTY, NEVADA

0234-055-05  
0234-055ROS.dwg

05/08/06

**RO Anderson**

1603 ESPIERALDA AVENUE / POST OFFICE BOX 2229  
MINDEN, NEVADA 89423  
PHONE: (775) 782-2922 / FAX: (775) 782-7054  
WEB SITE: WWW.ROANDERSON.COM