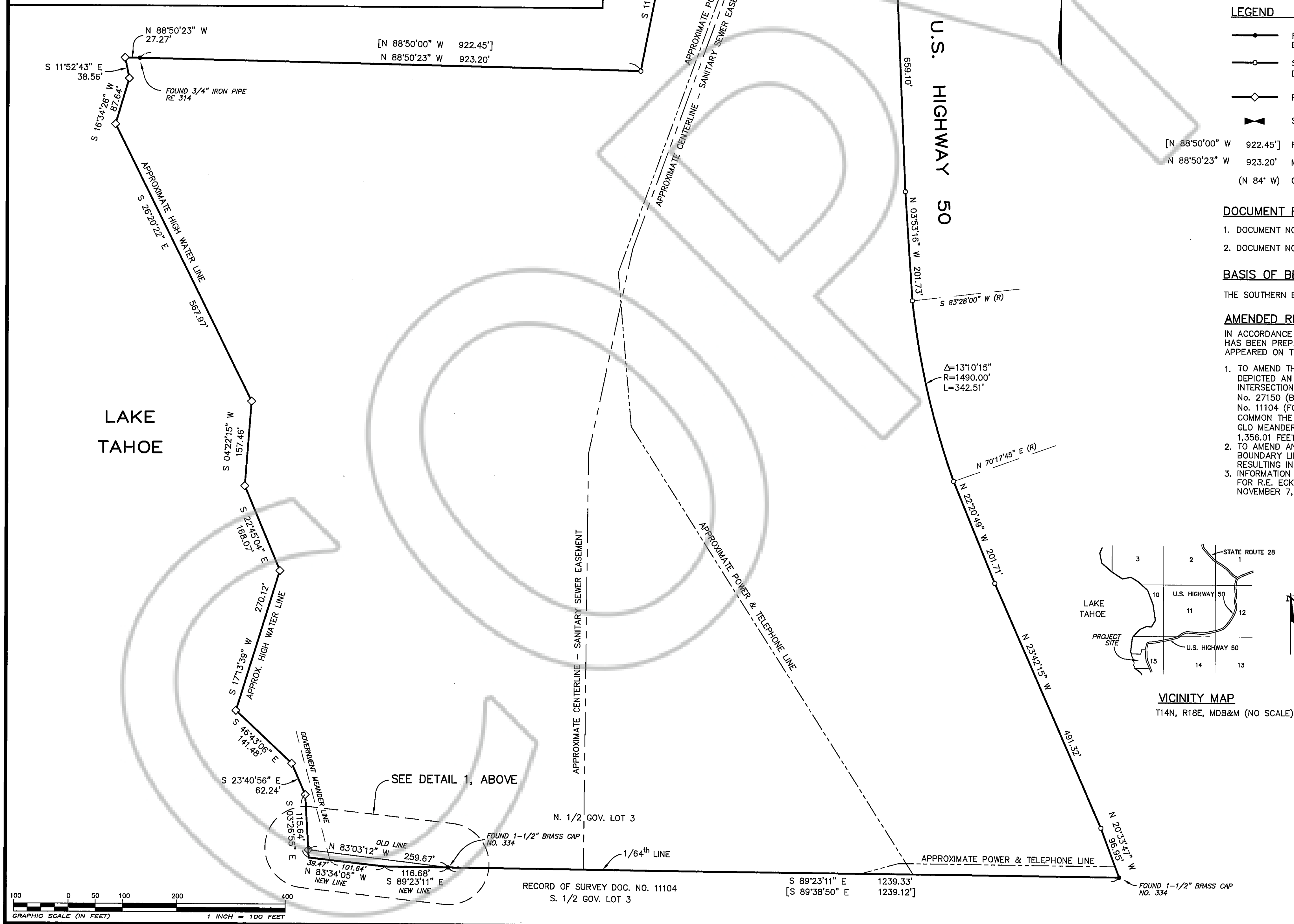
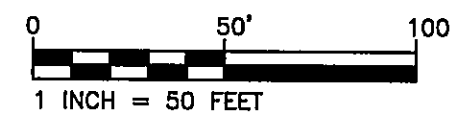


DETAIL 1



**SURVEYOR'S CERTIFICATE**  
 I KENNETH F. BARROW, A PROFESSIONAL LAND SURVEYOR LICENSED IN THE STATE OF NEVADA, DO HEREBY CERTIFY THAT:  
 1. THIS IS A TRUE AND ACCURATE REPRESENTATION OF THE LANDS SURVEYED BY ME AT THE INSTANCE OF PRIM 1988 REVOCABLE TRUST.  
 2. THE LANDS SURVEYED LIE WITHIN A PORTION OF SECTION 15, T.14N., R.18E., M.D.B.&M., AND THE SURVEY WAS COMPLETED ON OCTOBER 11, 1978.  
 3. THIS PLAN COMPLIES WITH THE APPLICABLE STATE STATUTES AND ANY LOCAL ORDINANCES IN EFFECT ON THE DATE THAT THE GOVERNING BODY GAVE ITS FINAL APPROVAL.  
 4. THE MONUMENTS DEPICTED ON THIS PLAN ARE OF THE CHARACTER SHOWN, OCCUPY THE POSITIONS INDICATED, AND ARE OF SUFFICIENT NUMBER AND DURABILITY.

*Kenneth F. Barrow*  
 KENNETH F. BARROW  
 PROFESSIONAL LAND SURVEYOR NO. 2983  
 DATE 9-22-06



- LEGEND**
- FOUND MONUMENT AS NOTED IN 1978, AS SHOWN ON DOC. NO. 027150, RECORD OF SURVEY FOR R.E. ECKENWEILER
  - SET MONUMENT IN 1978, AS SHOWN ON DOC. NO. 027150, RECORD OF SURVEY FOR R.E. ECKENWEILER
  - ◇— RECORD POINT - NOTHING SET
  - ▲— SECTION QUARTER CORNER
- [N 88°50'00" W 922.45'] RECORD BEARING & DISTANCE  
 N 88°50'23" W 923.20' MEASURED BEARING & DISTANCE  
 (N 84° W) GLO DATA

- DOCUMENT REFERENCES**
1. DOCUMENT NO. 027150; RECORD OF SURVEY FOR R.E. ECKENWEILER.
  2. DOCUMENT NO. 11104; MAP OF SURVEY FOR NELLIE R. SWEETLAND.

**BASIS OF BEARING**  
 THE SOUTHERN BOUNDARY OF UPPAWAY, DOCUMENT NO. 00394.

**AMENDED RECORD OF SURVEY NOTE:**  
 IN ACCORDANCE WITH N.R.S. 278.475, THIS RECORD OF SURVEY HAS BEEN PREPARED TO CORRECT THE FOLLOWING ITEMS WHICH APPEARED ON THE ORIGINAL RECORD OF SURVEY No. 27150:

1. TO AMEND THE SOUTHERLY BOUNDARY LINE WHICH INCORRECTLY DEPICTED AN ANGLE POINT IN THE 1/64<sup>th</sup> LINE EAST OF ITS INTERSECTION WITH THE GLO MEANDER LINE. RECORD OF SURVEY No. 27150 (BEING AMENDED HEREON) AND RECORD OF SURVEY No. 11104 (FOR NELLIE R. SWEETLAND) CORRECTLY SHARE IN COMMON THE 1/64<sup>th</sup> LINE OUT TO ITS INTERSECTION WITH THE GLO MEANDER LINE, AS DEPICTED IN "DETAIL 1", HEREON, BEING 1,356.01 FEET IN LENGTH (1,355.803 PER DOC. No. 11104).
2. TO AMEND AN INCORRECT DISTANCE SHOWN ON THE NORTHERLY BOUNDARY LINE FROM 28.00 FEET TO 27.27 FEET, THUS RESULTING IN A PROPER GEOMETRIC CLOSURE.
3. INFORMATION ON THIS MAP IS TAKEN FROM RECORD OF SURVEY FOR R.E. ECKENWEILER, DOCUMENT No. 27150, RECORDED ON NOVEMBER 7, 1978. NO NEW FIELD WORK HAS BEEN DONE.

**LAND AREA**  
 TOTAL AREA = 51.03 ACRES

**COUNTY RECORDER'S CERTIFICATE**  
 FILED FOR RECORD THIS 25<sup>th</sup> DAY OF September, 2006 AT 26 MINUTES PAST 11 O'CLOCK A.M. IN BOOK 0906 OF OFFICIAL RECORDS AT PAGE 7956 DOCUMENT NO. 685053 DOUGLAS COUNTY, NEVADA. RECORDED AT THE REQUEST OF Wayne L. Prim Trustee, Prim 1988 Revocable Trust  
*Wendee Christen*  
 COUNTY RECORDER  
 BY: *Camille Krosenberg*  
 DEPUTY  
 FEE: \$ 21.00

**AMENDED RECORD OF SURVEY**  
 FOR  
 PRIM 1988 REVOCABLE TRUST  
 AN AMENDMENT OF RECORD OF SURVEY DOC. 27150  
 A PORTION OF SECTION 15, T.14N., R.18E., M.D.B.&M.  
 DOUGLAS COUNTY NEVADA  
 KENNETH F. BARROW P.L.S. 2983  
 P.O. BOX 7000 INCLINE VILLAGE NEVADA 89450  
 11 SEP 2006 SHEET 1 OF 1

