

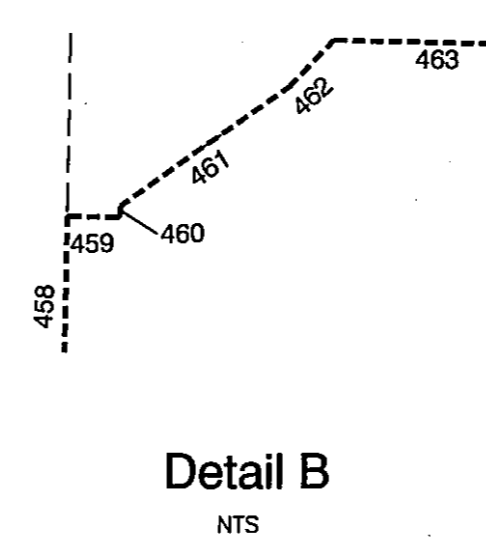
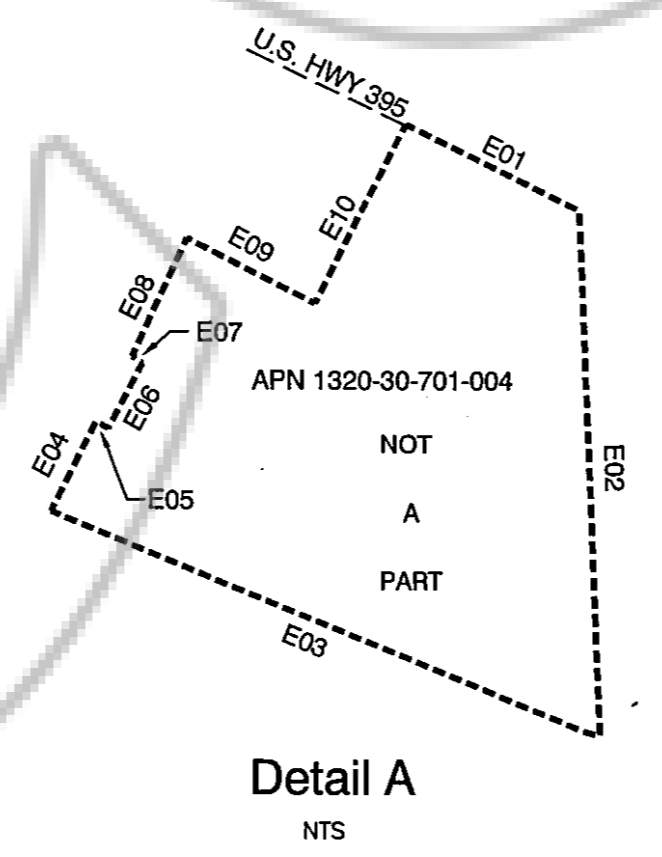
SCALE: 1"=400'

- LEGEND:**
- Parcels Being Annexed to MGSD per this map
 - MGSD Boundary only
 - 101 Legal Description Call Number
 - Town of Minden Well Location

SURVEYOR'S CERTIFICATE
 I, Bruce R. Scott, a Professional Surveyor licensed in the State of Nevada
 1. This map does not represent an actual survey but has been compiled from existing record information, Douglas County GIS records, and Title 18, Exhibit C entitled "Gardnerville, Town Boundary" and title 18, exhibit-entitled "Minden Town Boundary".

Bruce R. Scott
 Bruce R. Scott, PLS 3579

MINDEN-GARDNERVILLE SANITATION DISTRICT CERTIFICATE
 I, Jerome Etchegoyhen, Chairman of the Minden-Gardnerville Sanitation District (MGSD), certify that this map represents the MGSD boundary and the annexation(s) shown hereon have been approved by MGSD.
Jerome Etchegoyhen 11-21-06
 Jerome Etchegoyhen, Chairman Date
 Minden-Gardnerville Sanitation District



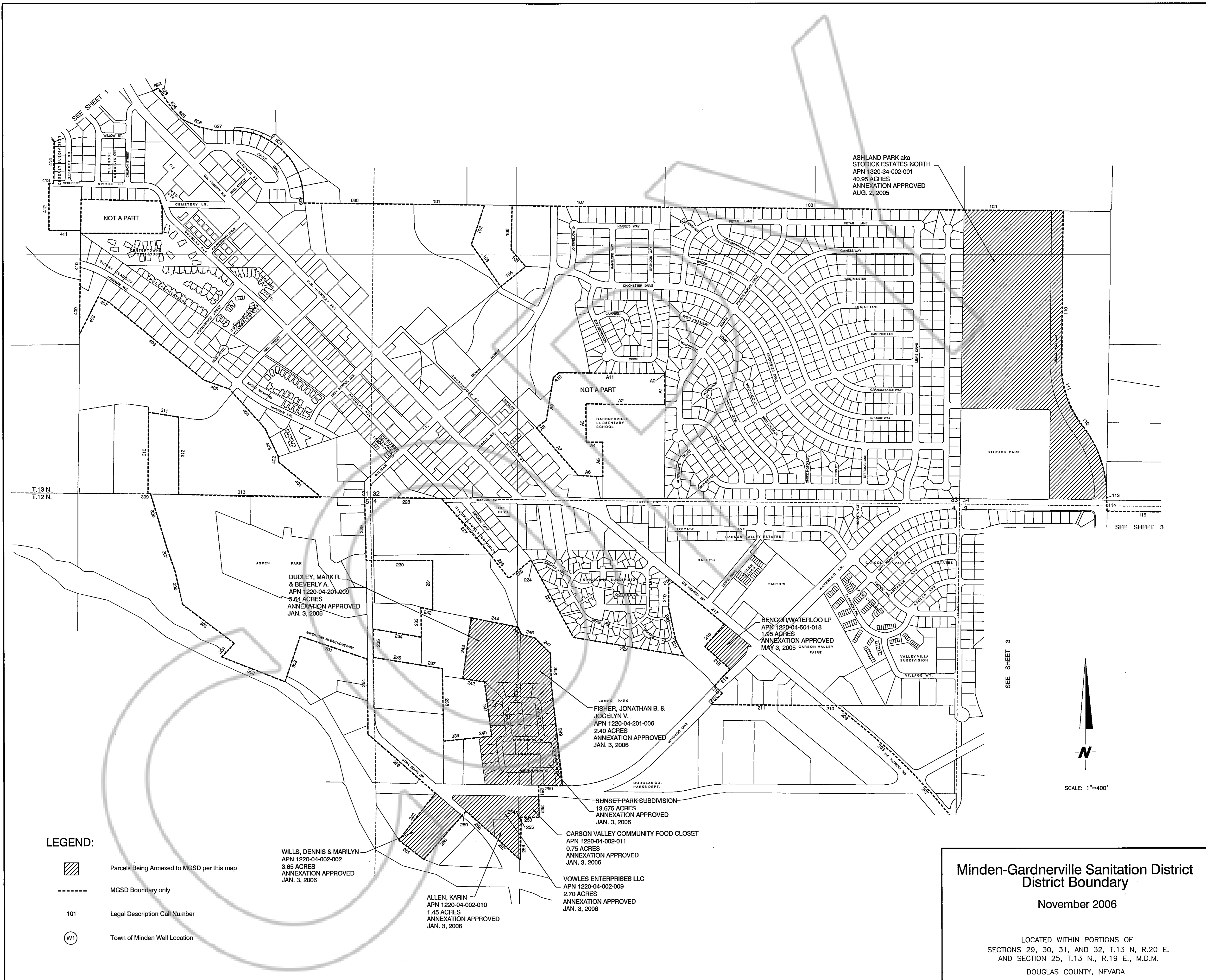
VAN WINKLE, RAY JR. & TONI
 APN 1320-29-201-006
 1.0 ACRE
 ANNEXATION APPROVED JAN. 4, 2005

RECORDER'S CERTIFICATE
 Filed this 22 day of November, 2006,
 at 52 minutes past 2 o'clock PM
 in Book 1106, Page 9164,
 Document Number 689356, recorded at the
 request of the Gardnerville Town Water Company.
Colleen Fokal-Deputy
 Douglas County Recorder

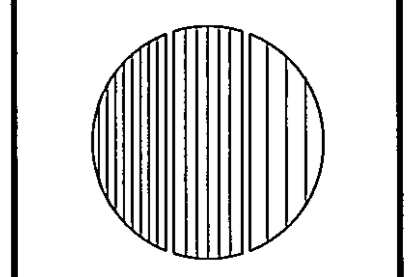
**Minden-Gardnerville Sanitation District
 District Boundary**
 November 2006
 LOCATED WITHIN PORTIONS OF
 SECTIONS 29, 30, 31, AND 32, T.13 N., R.20 E.
 AND SECTION 25, T.13 N., R.19 E., M.D.M.
 DOUGLAS COUNTY, NEVADA

ENGINEERING • PLANNING • RESOURCE MANAGEMENT
RESOURCE CONCEPTS, INC.
 340 N. MINNESOTA STREET • CARSON CITY, NEVADA 89703-4152 • OFFICE: 702-883-1600 • FAX: 702-883-1656

DATE	
REVISION	
JOB NO.	06-001-01
DATE	11-6-06
DRAWN:	MLM
CHECKED:	LT
SHEET 1 OF 3	



ENGINEERING • PLANNING • RESOURCE MANAGEMENT
RESOURCE CONCEPTS, INC.
 340 N. MINNESOTA STREET • CARSON CITY, NEVADA 89703-4152 • OFFICE: 702-883-1600 • FAX: 702-883-1656



REVISION	DATE

JOB NO. 06-001-01
 DATE 11-6-06
 DRAWN: MLM
 CHECKED: LT
 SHEET 2 OF 3

Minden-Gardnerville Sanitation District
 District Boundary
 November 2006

LOCATED WITHIN PORTIONS OF
 SECTIONS 29, 30, 31, AND 32, T.13 N., R.20 E.
 AND SECTION 25, T.13 N., R.19 E., M.D.M.
 DOUGLAS COUNTY, NEVADA

