

Corner Record
 APN: 1319-19-410-001
 185 Beverly Rd
 S19 T13N R19E, M.D.M.

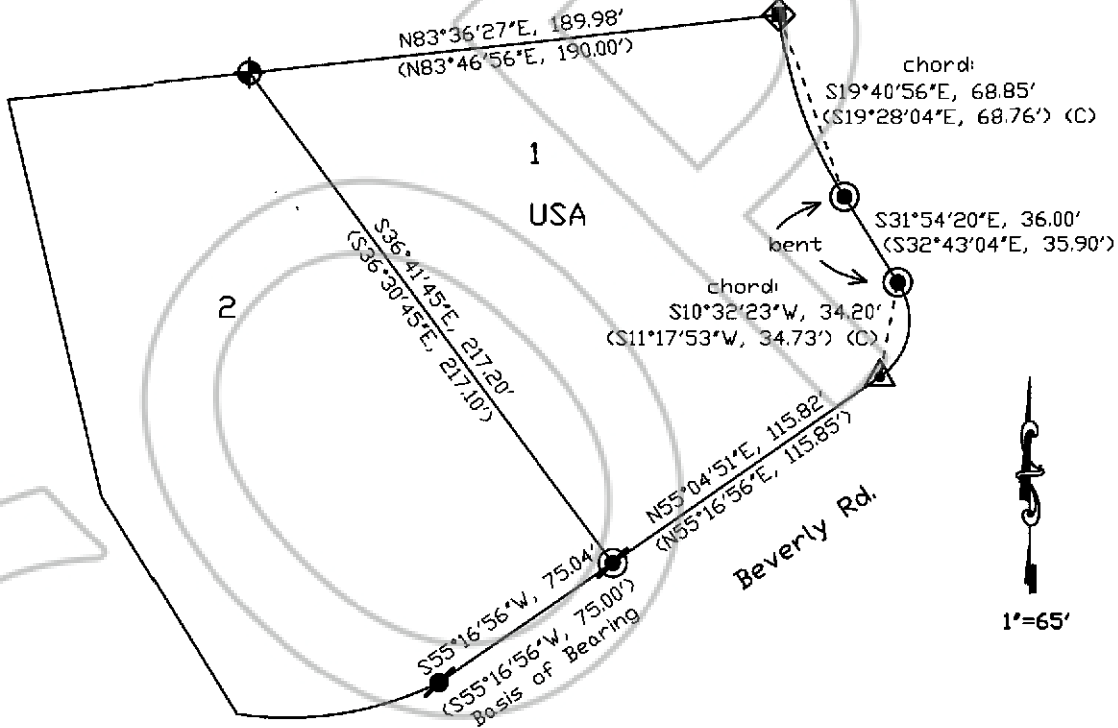
Date of Survey:
 August 24, 2006

Filed as required by Statutes of
 Nevada, 1969, Chapter 329

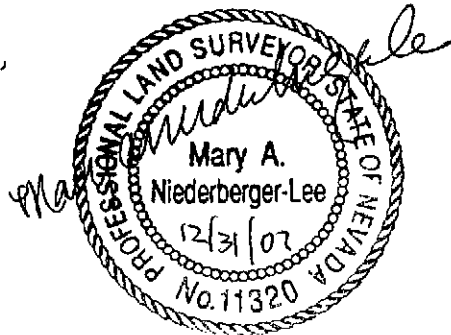
Douglas County - NV
 Werner Christen - Recorder
 Page: 1 of 1 Fee: 14.00
 BK-0407 PG- 965 RPTT: 0.00



- ◆ Set rebar/topper (PLS 11320)
- ◆ Set nail & shiner in asphalt
- ▲ Set 6" nail
- ⊗ Fnd. rebar/topper (RLS 3519)
- ⊗ Fnd. rebar
- ⊙ Fnd. plugged pipe (PLS 3519)



(Kingsbury Estates Unit #3, #29503,
 record bearings and distances)
 (C) - calculated bearing and
 distance from sub'd map



I, MARY A. NIEDERBERGER-LEE, PROFESSIONAL LAND SURVEYOR No. 11320
 IN THE STATE OF NEVADA, DO HEREBY CERTIFY THAT THE FOREGOING IS A TRUE,
 COMPLETE AND ACCURATE REPRESENTATION OF THE MONUMENT, OR MONUMENTS,
 RECOVERED, REHABILITATED, RESTORED, RE-ESTABLISHED OR OTHERWISE EFFECTED
 AND MENTIONED IN THE FOREGOING CORNER RECORD.