

14

OFFICIAL RECORD

Requested By:

LTEMU LANDS DEPT

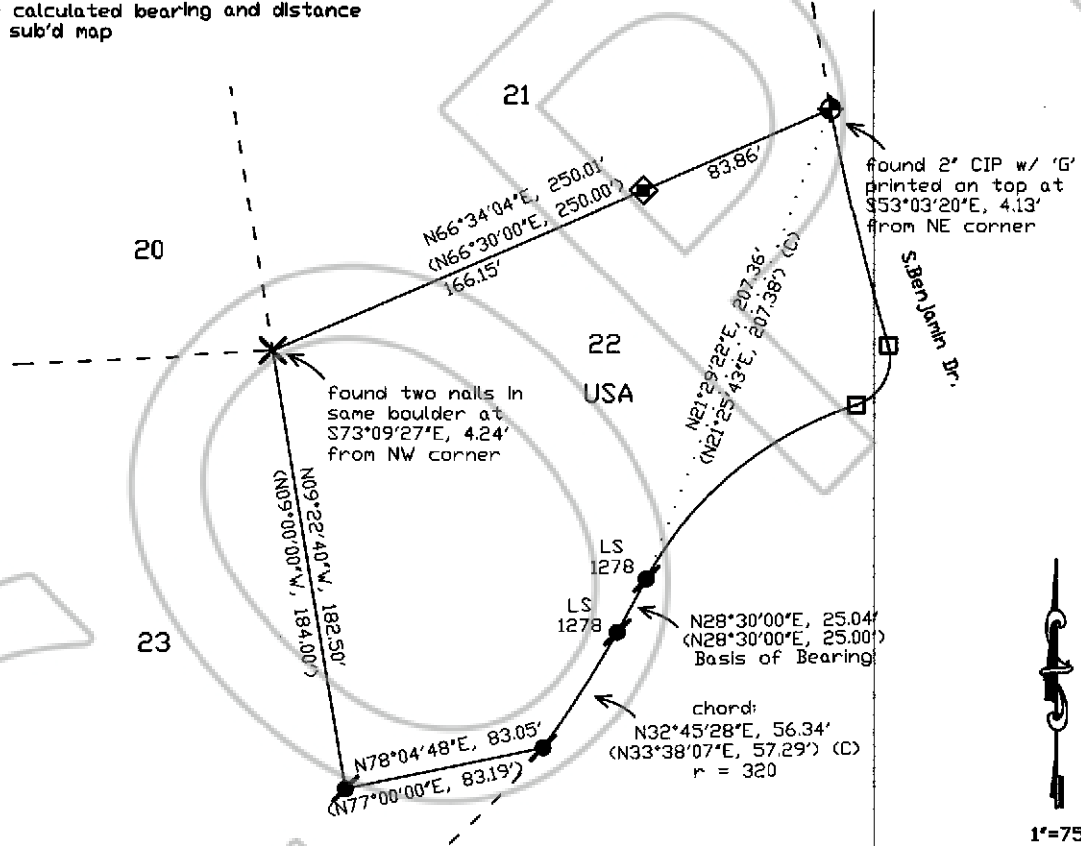
Corner Record APN: 1319-19-310-042 212 S. Benjamin Dr S19 T13N R19E, M.D.M.	Date of Survey: August 31, 2006
	Filed as required by Statutes of Nevada, 1969, Chapter 329

Douglas County - NV  
 Werner Christen - Recorder  
 Page: 1 Of 1 Fee: 14.00  
 BK-0407 PG- 966 RPTT: 0.00



- ◆ Set rebar/topper (PLS 11320)
- ◆ Set rebar as point-on-line
- ✕ Set 'X' in boulder
- ⚡ Fnd. rebar (tagged as noted)
- ☐ Nothing found, nothing set

(Kingsbury Estates Unit #1, Block 3,  
 #16645, record bearings and distances)  
 (C) - calculated bearing and distance  
 from sub'd map



*Mary A. Niederberger-Lee*  
 PROFESSIONAL LAND SURVEYOR OF THE STATE OF NEVADA  
 Mary A. Niederberger-Lee  
 12/31/07  
 No. 11320

I, MARY A. NIEDERBERGER-LEE, PROFESSIONAL LAND SURVEYOR No. 11320  
 IN THE STATE OF NEVADA, DO HEREBY CERTIFY THAT THE FOREGOING IS A TRUE,  
 COMPLETE AND ACCURATE REPRESENTATION OF THE MONUMENT, OR MONUMENTS,  
 RECOVERED, REHABILITATED, RESTORED, RE-ESTABLISHED OR OTHERWISE EFFECTED  
 AND MENTIONED IN THE FOREGOING CORNER RECORD.