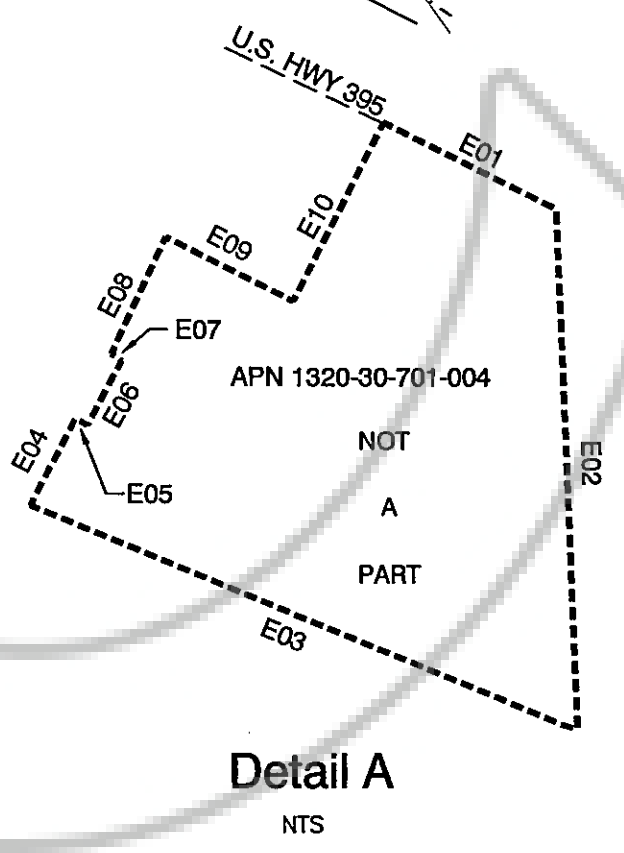


SCALE: 1"=400'

SURVEYOR'S CERTIFICATE
 I, Bruce R. Scott, a Professional Surveyor licensed in the State of Nevada
 1. This map does not represent an actual survey but has been compiled from existing record information, Douglas County GIS records, and Title 18, Exhibit C entitled "Gardnerville Town Boundary" and title 18, exhibit-entitled "Minden Town Boundary".

Bruce R. Scott
 Bruce R. Scott, PLS 3579

MINDEN-GARDNERVILLE SANITATION DISTRICT CERTIFICATE
 I, Jerome Etchegoyhen, Chairman of the Minden-Gardnerville Sanitation District (MGSD), certify that this map represents the MGSD boundary and the annexation(s) shown hereon have been approved by MGSD.
Jerome Etchegoyhen 4/23/07
 Jerome Etchegoyhen, Chairman Date
 Minden-Gardnerville Sanitation District



- LEGEND:**
- Parcels Being Annexed to MGSD per this map
 - MGSD Boundary only
 - 101 Legal Description Call Number
 - Town of Minden Well Location

RECORDER'S CERTIFICATE
 Filed this 26th day of April, 2007, at 24 minutes past 9 am o'clock in Book 407 Page 7754 Document Number 099810, recorded at the request of the Minden Gardnerville Sanitation District.

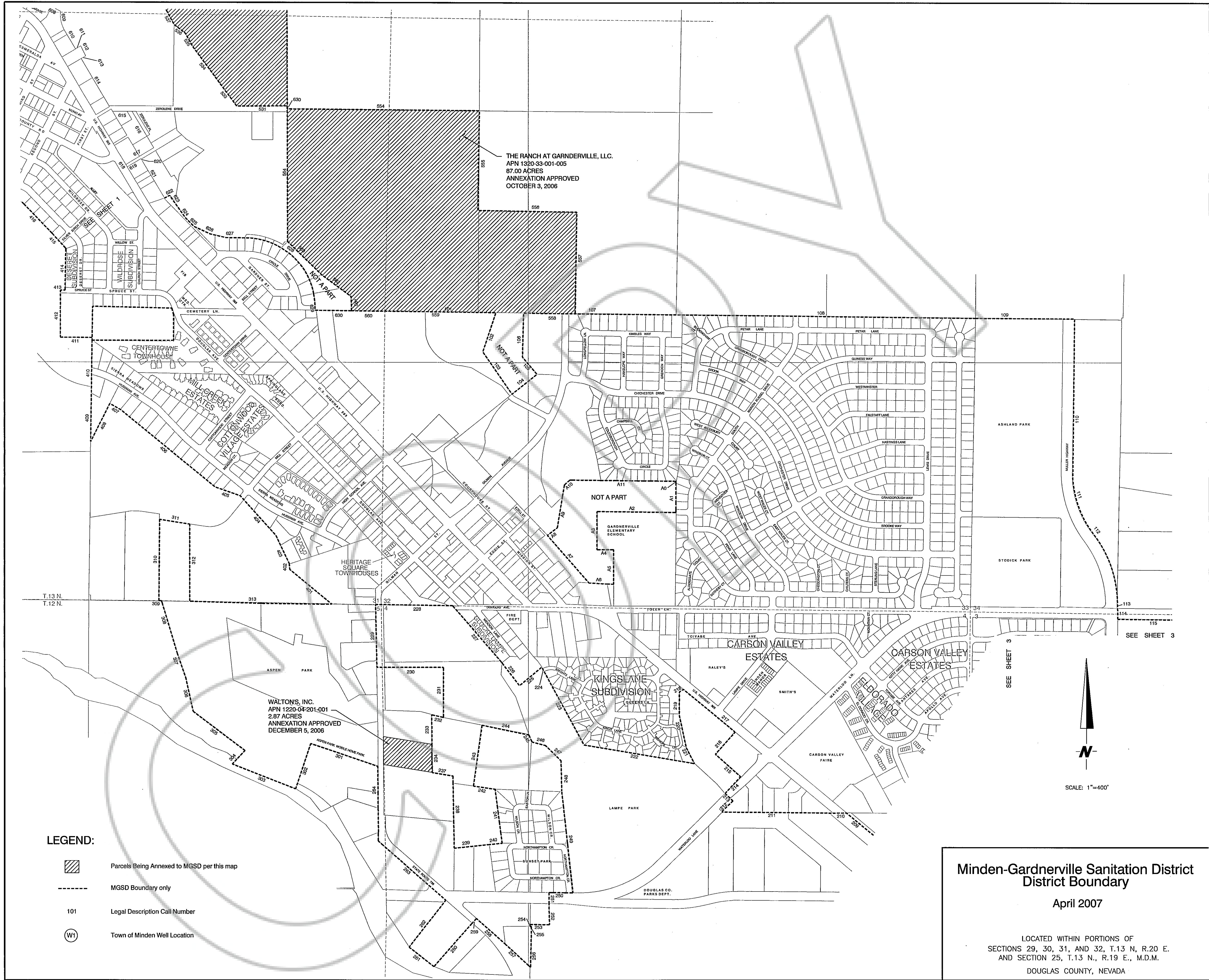
Shannon DeLesse
 Douglas County Recorder

Minden-Gardnerville Sanitation District District Boundary
 April 2007
 LOCATED WITHIN PORTIONS OF SECTIONS 29, 30, 31, AND 32, T.13 N, R.20 E. AND SECTION 25, T.13 N., R.19 E., M.D.M. DOUGLAS COUNTY, NEVADA

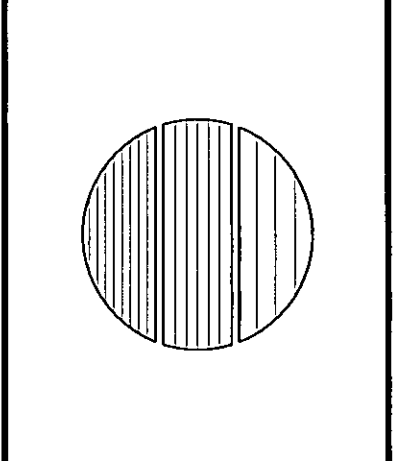
THE RANCH AT GARDNERVILLE, LLC
 APN 1320-29-000-008
 63.00 ACRES AND
 APN 1320-29-000-014
 47.530 ACRES ANNEXATION
 APPROVED OCTOBER 3, 2006

DATE	
REVISION	
JOB NO.	07-001-01
DATE	4-19-07
DRAWN	MLM
CHECKED	LT
SHEET	1 OF 3

ENGINEERING • PLANNING • RESOURCE MANAGEMENT
RESOURCE CONCEPTS, INC.
 340 N. MINNESOTA STREET • CARSON CITY, NEVADA 89703-4152 • OFFICE: 702-883-1600 • FAX: 702-883-1656

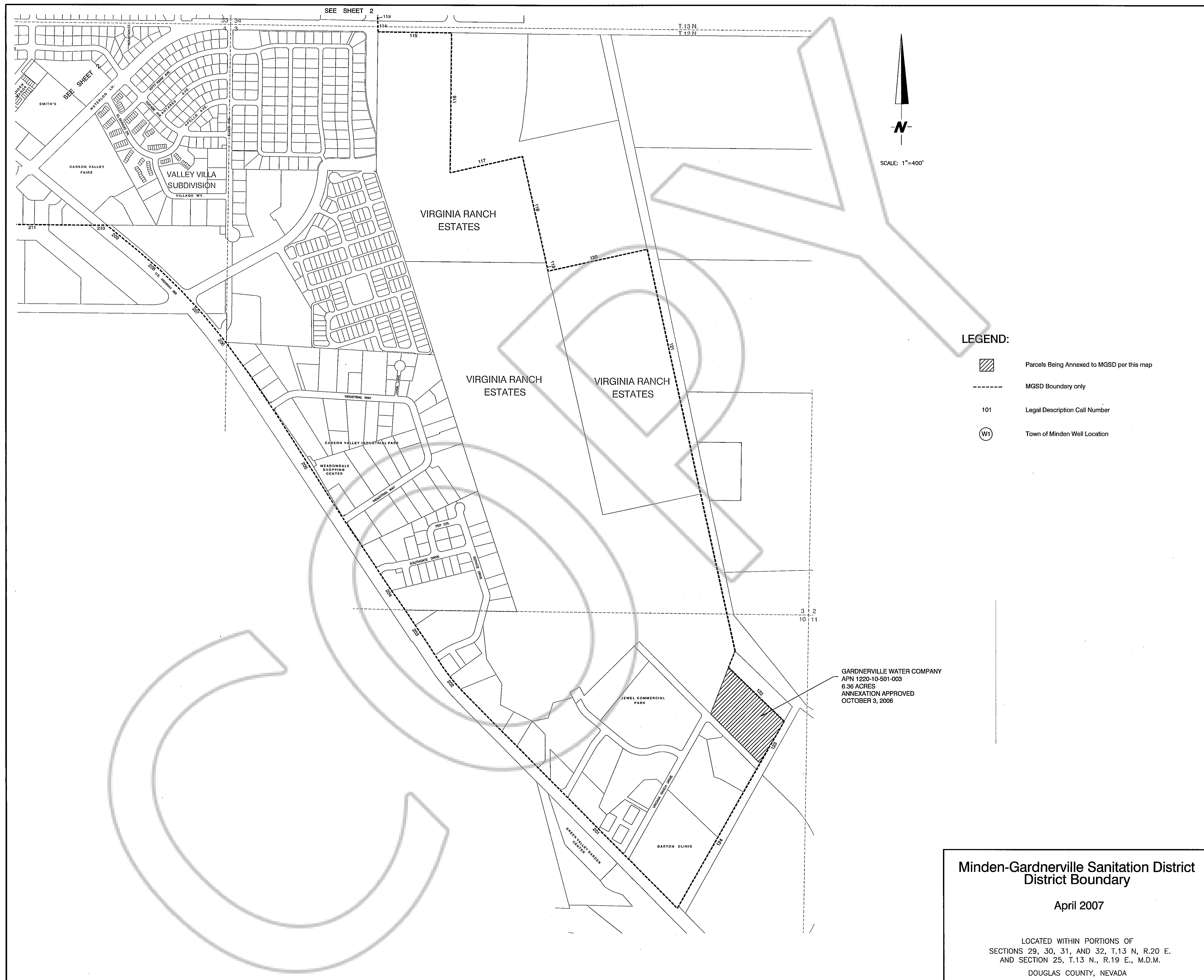



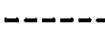
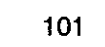

ENGINEERING • PLANNING • RESOURCE MANAGEMENT
RESOURCE CONCEPTS, INC.
 340 N. MINNESOTA STREET • CARSON CITY, NEVADA 89703-4152 • OFFICE: 702-883-1600 • FAX: 702-883-1656



REVISION	DATE

JOB NO. 07-001-01
 DATE 4-19-07
 DRAWN: MLM
 CHECKED: LT
 SHEET 2 OF 3



- LEGEND:**
-  Parcels Being Annexed to MGSD per this map
 -  MGSD Boundary only
 -  Legal Description Call Number
 -  Town of Minden Well Location

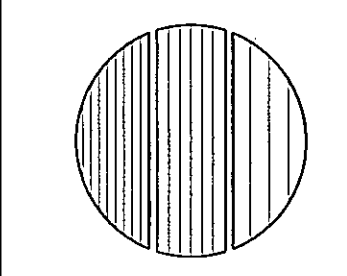
GARDNERVILLE WATER COMPANY
 APN 1220-10-501-003
 6.36 ACRES
 ANNEXATION APPROVED
 OCTOBER 3, 2006

Minden-Gardnerville Sanitation District
 District Boundary

April 2007

LOCATED WITHIN PORTIONS OF
 SECTIONS 29, 30, 31, AND 32, T.13 N, R.20 E.
 AND SECTION 25, T.13 N., R.19 E., M.D.M.
 DOUGLAS COUNTY, NEVADA

ENGINEERING • PLANNING • RESOURCE MANAGEMENT
RESOURCE CONCEPTS, INC.
 340 N. MINNESOTA STREET • CARSON CITY, NEVADA 89703-4152 • OFFICE: 702-883-1600 • FAX: 702-883-1656



DATE	
REVISION	
JOB NO. 07-001-01	
DATE 4-19-07	
DRAWN: MLM	
CHECKED: LT	
SHEET 3 OF 3	