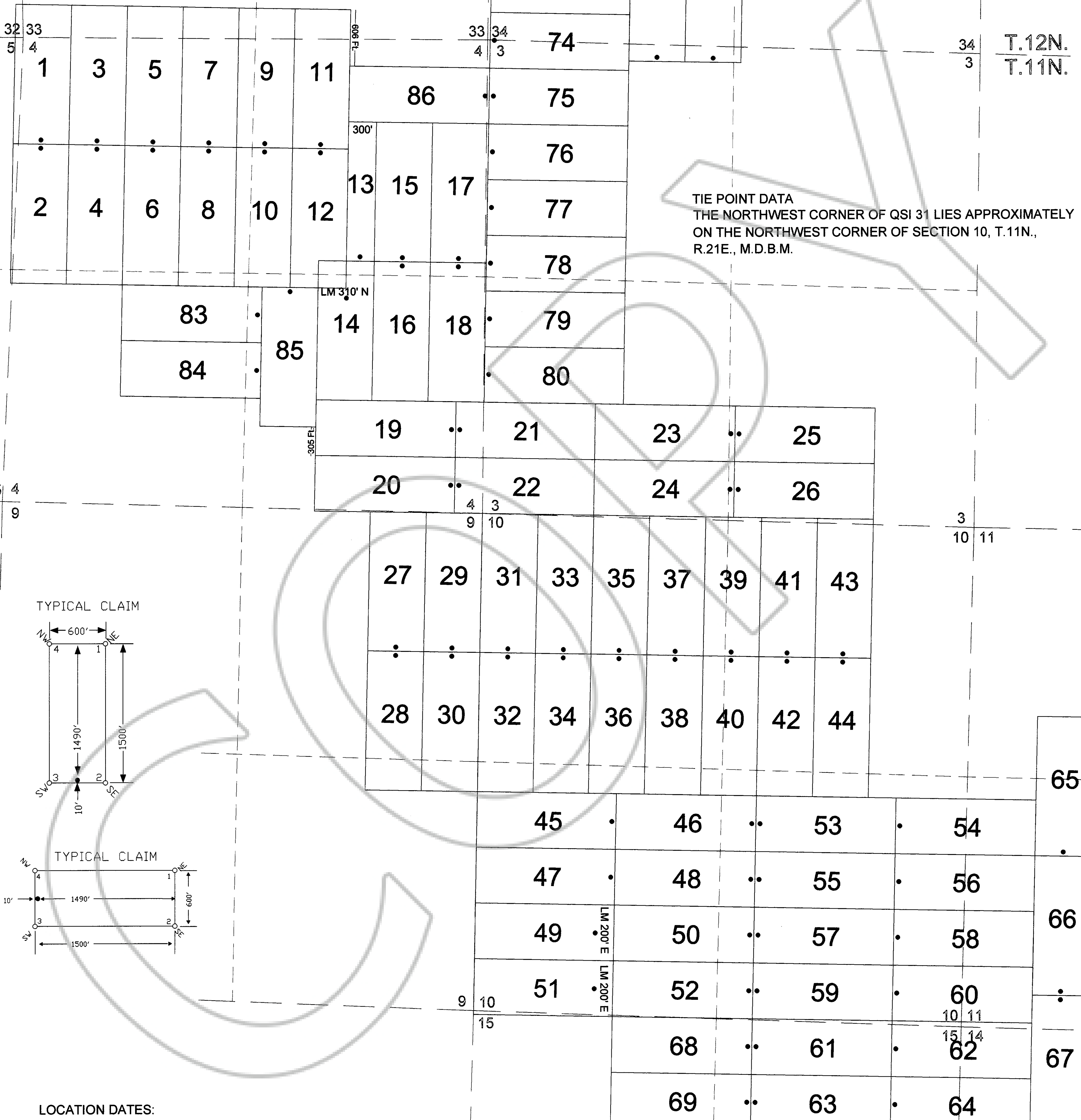


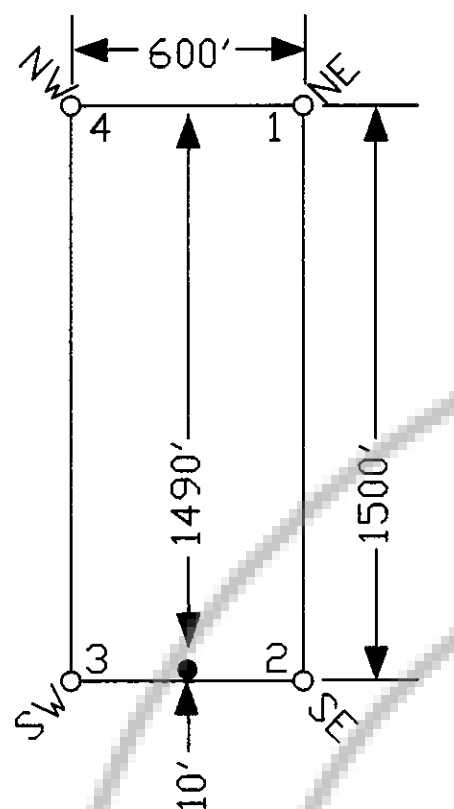
R.21E.

Scale 1" = 500'
1:6000

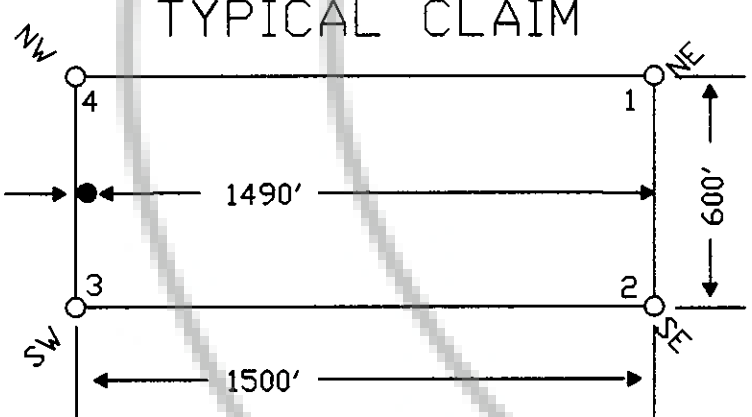


TIE POINT DATA
 THE NORTHWEST CORNER OF QSI 31 LIES APPROXIMATELY
 ON THE NORTHWEST CORNER OF SECTION 10, T.11N.,
 R.21E., M.D.B.M.

TYPICAL CLAIM



TYPICAL CLAIM



LOCATION DATES:

- April 2, 2007 - QSI 45,47,49,51
- April 3, 2007 - QSI 46,48,50,52,53,55,57,59,61,63,68,69
- April 4, 2007 - QSI 27-44,54,56,58,60,62,64-67
- April 5, 2007 - QSI 13-26,78-80,83-85
- April 6, 2007 - QSI 1-12,70-77,81-82,86

(86 Total Claims)

PALISADES VENTURES - DOC#703645 - Q S II-86

NOTES:
 LOCATION MONUMENTS SET 10' FROM CLAIM END CENTERLINES
 UNLESS NOTED ON MAP. ALL LOCATION MONUMENTS AND CLAIM
 POSTS ARE 2"x2"x4' WOODEN STAKES.



369 - 5th STREET
 PH: (775) 778-0668 ELKO, NV 89801 FAX: (775) 778-0687

Locator: Palisade Ventures
 109 Fir Street, Elko, Nevada 89801-3023
 QSI 1-86 Lode Claims
 T.11,12N.,R.21E; Douglas County, Nevada

DATE: June 2007
 IACAD FILE NAME: [unclear]
 PLOT SCALE: 1" = 500'
 DRAWN BY: [unclear]