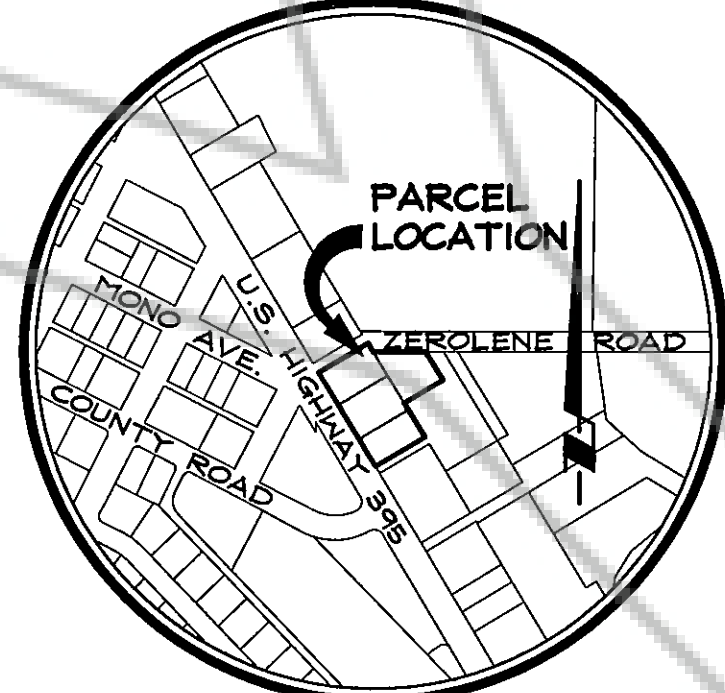
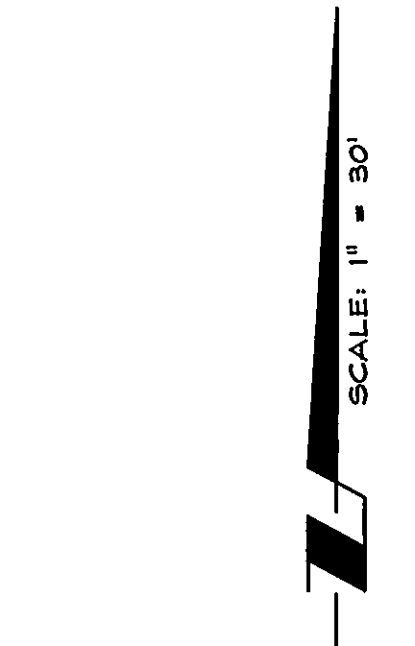


BASIS OF BEARING
 S89°42'32"E(R1)(M)
 1027.99'(R1)(M)



FOUND SCRIBED 'X' IN CONCRETE PER DOC. NO. 517056



BASIS OF BEARING

S89°42'32"E -- THE SOUTH LINE OF ADJUSTED A.P.N.'S 1320-29-000-006 & 007, AS SHOWN ON THE RECORD OF SURVEY TO SUPPORT A BOUNDARY LINE ADJUSTMENT FOR ALTON A. & SUSAN L. ANKER AND PARK CATTLE COMPANY FILED FOR RECORD JUNE 28, 2006 AS DOCUMENT NO. 678199.

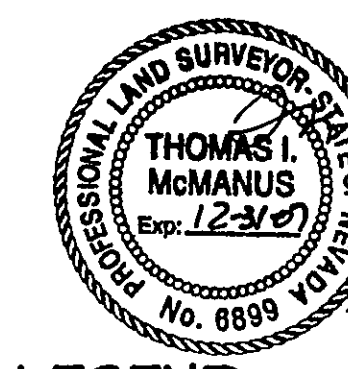
NOTES

AREA: 52,546 SF / 1.21 AC.
 THIS RECORD OF SURVEY HAS BEEN PREPARED TO INDICATE THE LIMITS OF A.P.N.'S 1320-32-501-004, 005, 006 & 008.
 THE PARCELS SHOWN HEREON MAY BE SUBJECT TO A 6' WATERLINE EASEMENT PER BK. 20, PG. 275 AND AN EASEMENT GRANTED TO TRUCKEE RIVER GENERAL ELECTRIC COMPANY PER BK. E, PG. 217.
 THIS MAP IS NOT IN CONFLICT WITH N.R.S. 278.010 TO 278.630 INCLUSIVE.

FOUND NDOT RIGHT-OF-WAY MONUMENT S89°22'36"W 4.73' FROM RIGHT-OF-WAY LINE STAMPED. STA: 10+53+69.31 POT 10+53+68.95 PT DIST: 32.27' ANGLE: 90°

SURVEYOR'S CERTIFICATE

I, THOMAS I. McMANUS, A PROFESSIONAL LAND SURVEYOR LICENSED IN THE STATE OF NEVADA CERTIFY THAT:
 1) THIS PLAT REPRESENTS THE RESULTS OF A SURVEY CONDUCTED UNDER MY DIRECT SUPERVISION AT THE INSTANCE OF ZEROLENE PLACE, LLC.
 2) THE LANDS SURVEYED LIE WITHIN A PORTION OF SECTION 32, T.13N., R.20E., M.D.M. AND THE SURVEY WAS COMPLETED ON July 6, 2007
 3) THIS PLAT COMPLIES WITH THE APPLICABLE STATE STATUTES AND ANY LOCAL ORDINANCE IN EFFECT ON THE DATE THAT THE GOVERNING BODY GAVE ITS FINAL APPROVAL.
 4) THE MONUMENTS DEPICTED ON THE PLAT ARE OF THE CHARACTER SHOWN, OCCUPY THE POSITIONS INDICATED AND ARE OF SUFFICIENT NUMBER AND DURABILITY.



THOMAS I. McManus
 THOMAS I. McMANUS, P.L.S. 6899
 7-6-07

LEGEND

- FOUND 1/2" IRON PIPE - NO TAG
- FOUND NEVADA DEPARTMENT OF TRANSPORTATION RIGHT-OF-WAY MONUMENT AS INDICATED
- ⊗ FOUND CHISELED 'X' IN CONCRETE
- ⊙ CALCULATED POSITION, NOTHING FOUND OR SET
- FOUND POSITION AS INDICATED
- FOUND 5/8" REBAR WITH PLASTIC CAP PLS 1586
- △ FOUND 5/8" REBAR WITH PLASTIC CAP PLS 11172
- ▲ SET 5/8" REBAR WITH PLASTIC CAP PLS 6899, UNLESS OTHERWISE NOTED
- (C) CALCULATED POSITION
- (M) MEASURED POSITION
- (D1) DEED - DI SALVO TO ZEROLENE PLACE, LLC, BOOK 1204, PAGE 4983 (ROTATED CLOCKWISE 00°44'36" TO MAP BASIS)
- (D2) DEED - CRAWFORD TO BI-STATE PETROLEUM, BOOK 1286, PAGE 4085
- (D3) DEED - NEDDENRIEP TO SARRATEA, BOOK 873, PAGE 248 (ROTATED CLOCKWISE 00°44'26" TO MAP BASIS)
- (D4) DEED - FRASER, BOOK 293, PAGE 1502
- (D5) DEED - LEVECK, BOOK 791, PAGE 4629 (ROTATED CLOCKWISE 00°44'36" TO MAP BASIS)
- (R1) ROS - THE RECORD OF SURVEY TO SUPPORT A BOUNDARY LINE ADJUSTMENT FOR ALTON A. & SUSAN L. ANKER AND PARK CATTLE COMPANY, DOC. NO. 678199
- (R2) ROS - RECORD OF SURVEY FOR TOWN OF MINDEN, DOUGLAS COUNTY, MICHAEL C. & ANGEL KERR GILBERT, DOC. NO. 517056 (ROTATED CLOCKWISE 00°44'36" TO MAP BASIS)
- (R3) ROS - RECORD OF SURVEY FOR LOUIS F. NEDDENRIEP, DOC. NO. 63680 (ROTATED CLOCKWISE 00°44'26" TO MAP BASIS)
- (R4) ROS - RECORD OF SURVEY TO ACCOMPANY LOT LINE ADJUSTMENT FOR SHIRLEY YVONNE FRASER, DOC. NO. 276057 (ROTATED CLOCKWISE 00°44'22" TO MAP BASIS)
- (R5) ROS - RECORD OF SURVEY FOR SHIRLEY FRASER, DOC. NO. 316382 (ROTATED CLOCKWISE 00°39'53" TO MAP BASIS)

RECORDER'S CERTIFICATE

FILED FOR RECORD THIS 9th DAY OF July, 2007, AT 19 MINUTES PAST 10 O'CLOCK a.M., IN BOOK 0707 OF OFFICIAL RECORDS AT PAGE 1993, DOCUMENT NO. 704627.
 RECORDED AT THE REQUEST OF ZEROLENE PLACE, LLC.

REVERSIONARY MAP DOC# 2022-983714
 SHANNON DeCose
 DOUGLAS COUNTY RECORDER

SCALE: 1" = 30' SHEET 1 OF 1

RECORD OF SURVEY FOR ZEROLENE PLACE, LLC

LOCATED WITHIN A PORTION OF SECTION 32, T.13N., R.20E., M.D.M. DOUGLAS COUNTY, NEVADA
 0344-042-07
 0344-042ROS.dwg 07/06/07

RO Anderson
 1603 ESMERALDA AVENUE / ROBT OFFICE BOX 2224
 MINDEN, NEVADA 89423
 PHONE: (775) 782-2322 / FAX: (775) 782-7084
 WEB SITE: WWW.ROANDERSON.COM