

DOC # 0708365
08/29/2007 12:51 PM Deputy: GB

OFFICIAL RECORD

Requested By:

T E C CIVIL ENGINEERING
CONSULTANTS

Douglas County - NV
Werner Christen - Recorder

Page: 1 Of 2 Fee: 15.00
BK-0807 PG- 8411 RPTT: 0.00



When Recorded Return To:

✓ TEC Civil Engineering Consultants
9480 Double Diamond Parkway, Suite #200
Reno, NV 89521

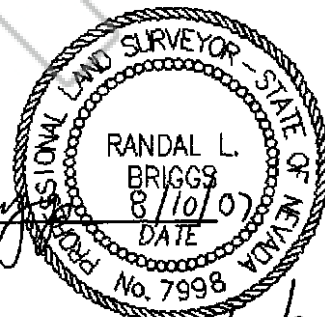
CORNER RECORD

SURVEYOR'S CERTIFICATE

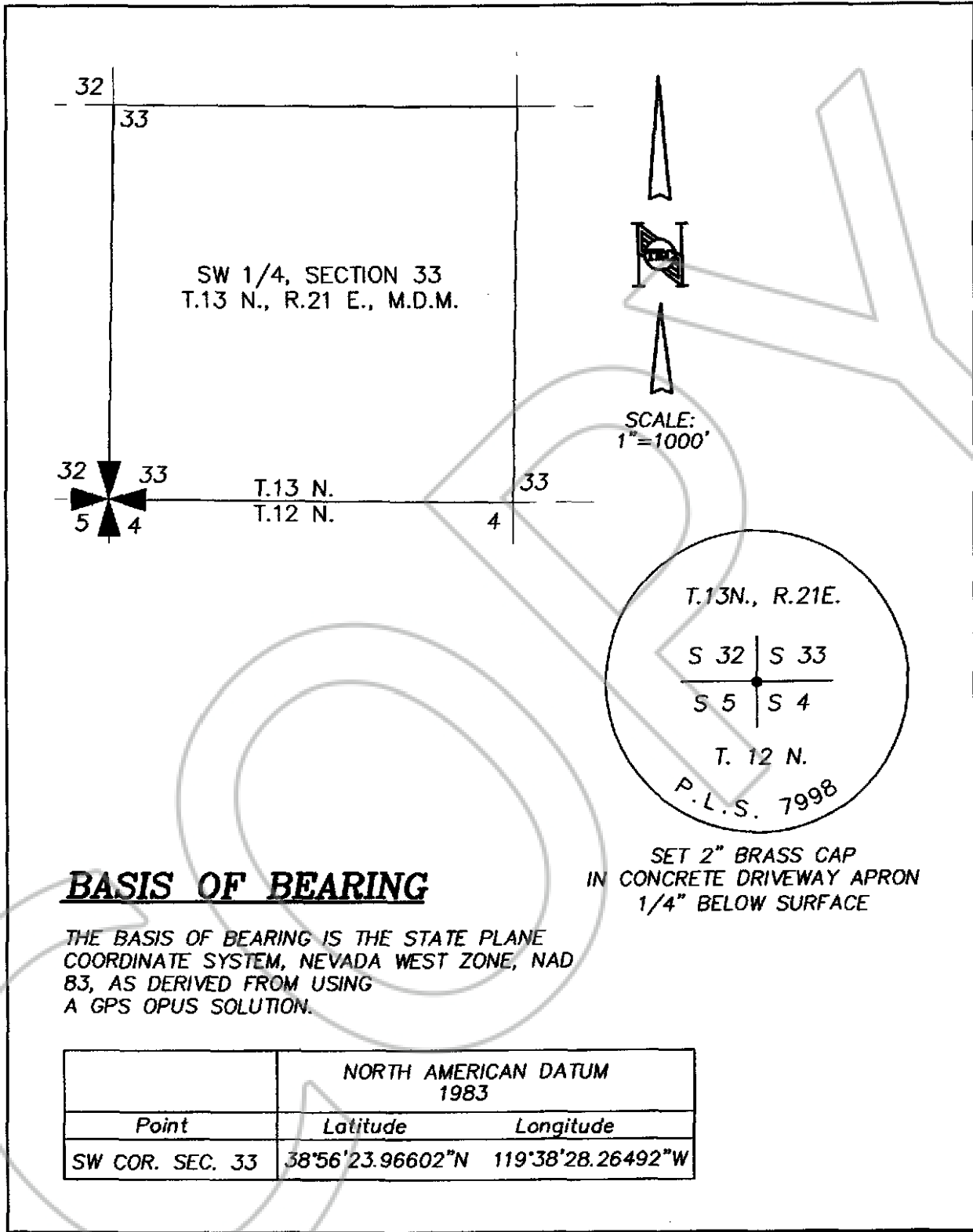
I, Randal L. Briggs, a Professional Land Surveyor licensed in the state of Nevada, certify that:

1. This corner record represents the restoration and remonumentation of a corner conducted under my direct supervision.
2. The monument perpetuated lies within Section 33, Township 13 North, Range 21 East, Mount Diablo Meridian, Douglas County and the restoration was completed on August 9, 2007.
3. This corner record has been filed pursuant to NRS 329.140 and 329.150 and complies with the provisions of NAC 329.010, NRS 247.110 and any local ordinances in effect on the date that the restoration and remonumentation was completed.
4. The monuments are of the character shown, occupy the position indicated, and are of sufficient durability.

Randal L. Briggs
RANDAL L. BRIGGS, P.L.S. 7998



exp 12/31/08



BASIS OF BEARING

THE BASIS OF BEARING IS THE STATE PLANE COORDINATE SYSTEM, NEVADA WEST ZONE, NAD 83, AS DERIVED FROM USING A GPS OPUS SOLUTION.

SET 2" BRASS CAP
IN CONCRETE DRIVEWAY APRON
1/4" BELOW SURFACE

	NORTH AMERICAN DATUM 1983	
Point	Latitude	Longitude
SW COR. SEC. 33	38°56'23.96602"N	119°38'28.26492"W

DATE: 8-10-07	DOUGLAS COUNTY	
	EXHIBIT OF RECORD CORNERS IN	
	SECTION 33, T.13N., R.21E., M.D.M.	
SHEET 2 OF 2		