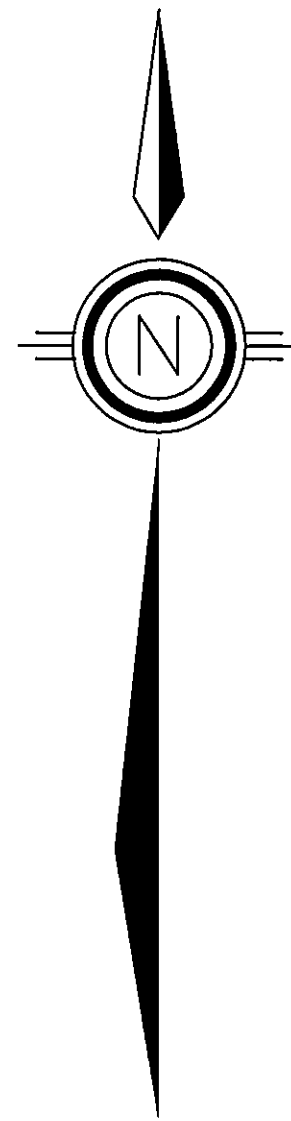


BASIS OF BEARINGS

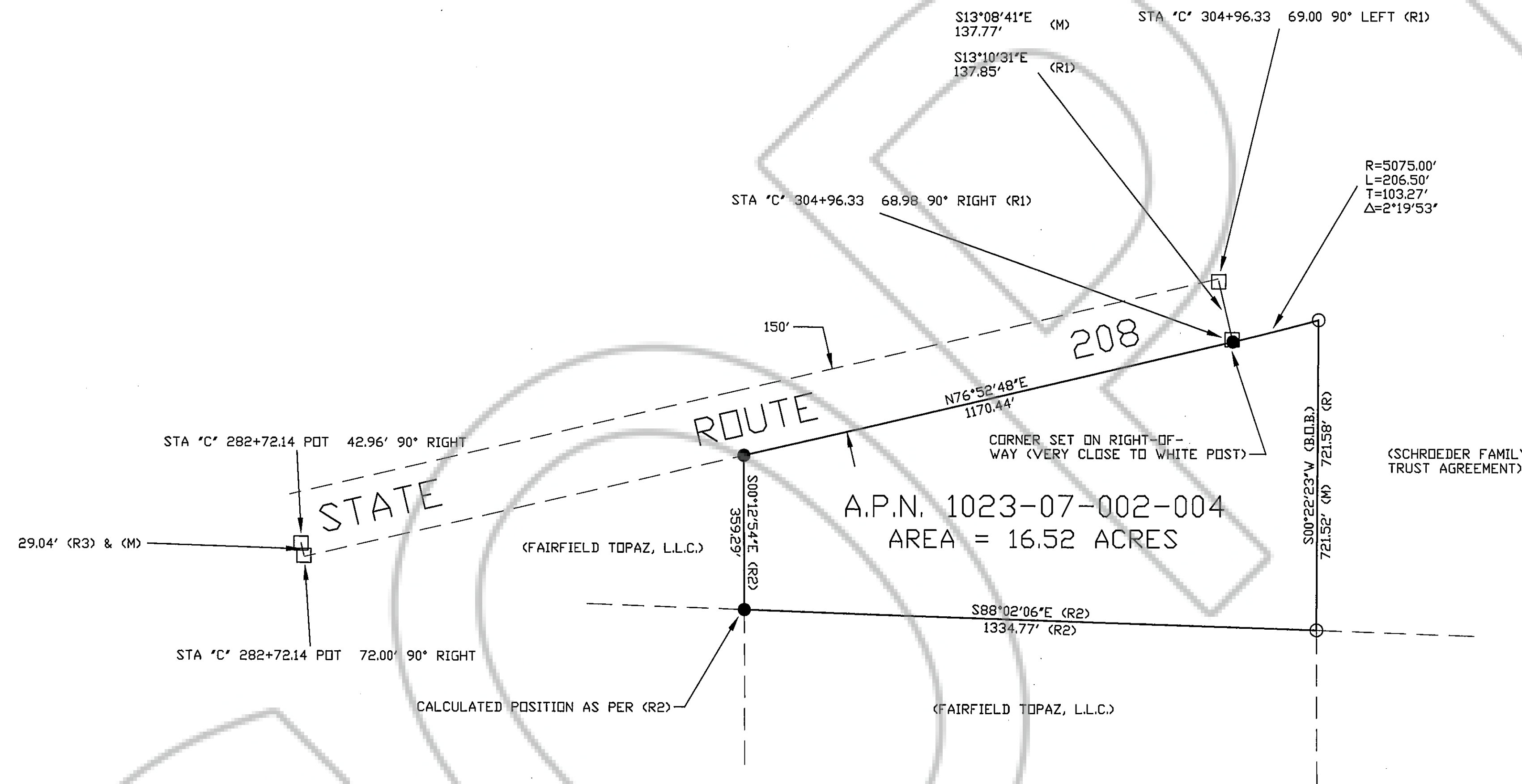
THE BASIS OF BEARINGS OF THIS MAP IS THE WEST LINE OF A.P.N. 1023-07-002-006 AS PER (R). SAID BEARING IS N00°22'23"E.



SCALE: 1" = 200'

LEGEND

- SET 5/8" REBAR WITH PLASTIC CAP STAMPED PLS 3090.
- FOUND 5/8" REBAR & CAP AS PER (R).
- (R) RECORD OF SURVEY, DOCUMENT #539247, OFFICIAL RECORDS, DOUGLAS COUNTY, NEVADA.
- (R1) RECORD OF SURVEY, DOCUMENT #263250, OFFICIAL RECORDS, DOUGLAS COUNTY, NEVADA.
- (R2) RECORD OF SURVEY, DOCUMENT #239522, OFFICIAL RECORDS, DOUGLAS COUNTY, NEVADA.
- (R3) STATE OF NEVADA R/W PROJECT 70043 F-003-1(2) S-560(4), SHEET 6 OF 6.
- CONCRETE HIGHWAY MONUMENT WITH BRASS DISC AS DESCRIBED.
- (M) MEASURED.

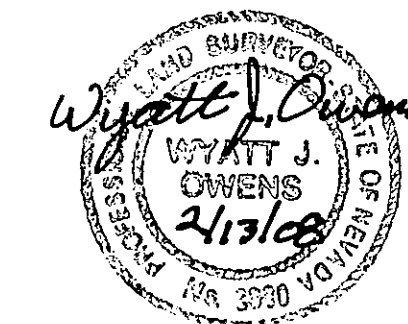


SURVEYOR'S CERTIFICATE

I, WYATT J. OWENS, A PROFESSIONAL LAND SURVEYOR REGISTERED IN THE STATE OF NEVADA, CERTIFY THAT:

1. THIS PLAT REPRESENTS THE RESULTS OF A SURVEY CONDUCTED UNDER MY DIRECT SUPERVISION AT THE INSTANCE OF MARK WILSON.
2. THE LANDS SURVEYED LIE WITHIN SECTION 7, TOWNSHIP 10 NORTH, RANGE 23 EAST, M.D.B.&M. AND THE SURVEY WAS COMPLETED ON FEBRUARY 12, 2008.
3. THIS PLAT COMPLIES WITH THE APPLICABLE STATE STATUTES AND ANY LOCAL ORDINANCES IN EFFECT ON THE DATE THAT THE GOVERNING BODY GAVE IT'S FINAL APPROVAL.
4. THE MONUMENTS DEPICTED ON THE PLAT ARE OF THE CHARACTER SHOWN, OCCUPY THE POSITIONS INDICATED AND ARE OF SUFFICIENT NUMBER AND DURABILITY.

Wyatt J. Owens 2/13/08
 WYATT J. OWENS, PLS 3090 DATE



RECORDER'S CERTIFICATE

FILED FOR RECORD THIS 23rd DAY OF February 2008, AT 00 MINUTES PAST 1 O'CLOCK P.M. IN BOOK 0208 OF OFFICIAL RECORDS PAGE 2960, DOCUMENT NUMBER 717999, RECORDED AT THE REQUEST OF WYATT J. OWENS.

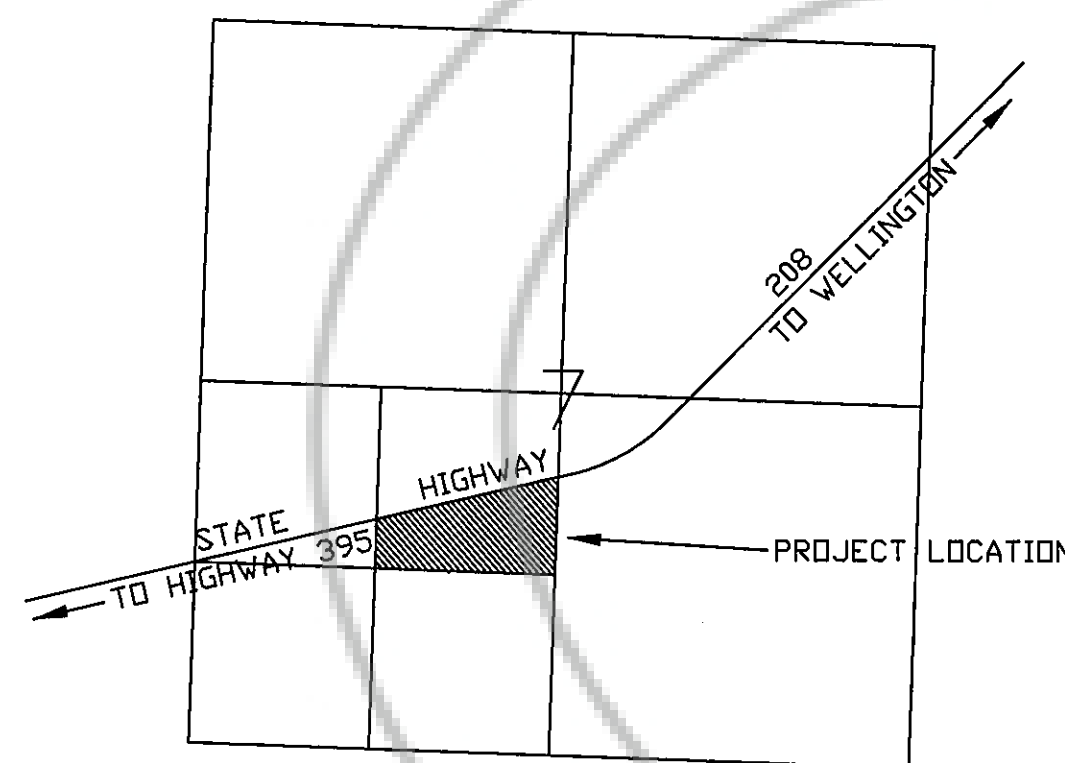
Shawyne Harren
 DOUGLAS COUNTY RECORDER

NOTES

1. THE LOCATION OF THE WESTERLY CORNERS OF THIS PARCEL WAS DETERMINED USING THE INFORMATION FOUND IN (R2).
2. THE LOCATION OF STATE ROUTE 208 WAS DETERMINED USING THE INFORMATION FOUND IN (R1) & (R3).
3. SEE (R2) FOR THE SECTIONAL BREAK-DOWN OF THE SW1/4 OF SECTION 7, T. 10 N., R. 23 E., M.D.B. & M.

VICINITY MAP

NOT TO SCALE



SHEET 1 OF 1

RECORD OF SURVEY
 FOR
 MARK S. & BRIGITTE M. WILSON

BEING THAT PORTION OF THE NE1/4 OF THE SW1/4 OF SECTION 7, T. 10 N., R. 23 E., M.D.B. & M. LYING SOUTH OF STATE ROUTE 208 DOUGLAS COUNTY, NEVADA