

13

DOC # 0719644  
03/17/2008 12:51 PM Deputy: SD

OFFICIAL RECORD

Requested By:

R.O. ANDERSON ENGINEERING,  
INC

Douglas County - NV  
Werner Christen - Recorder

Page: 1 Of 2 Fee: 15.00  
BK-0308 PG- 3437 RPTT: 0.00



Assessor's Parcel Number: 1420-07-71A-006 8008 8011

Recording Requested By: TIM MULLIKIN

Name: ROANDERSON

Address: POB 7229

City/State/Zip MINDEN NV 89423

Real Property Transfer Tax: \$ \_\_\_\_\_

CORNER RECORD

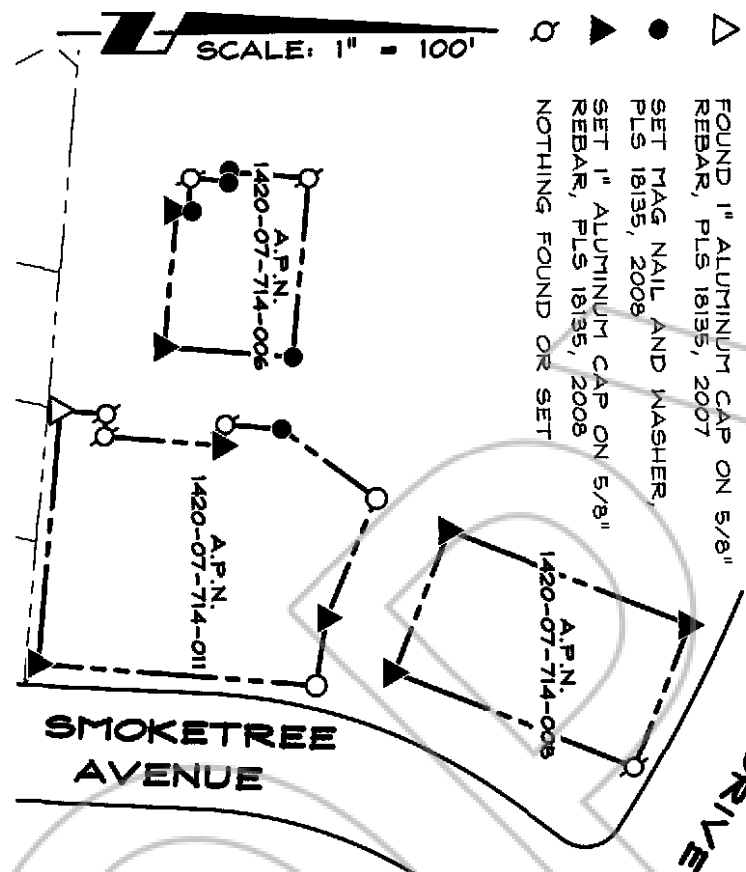
(Title of Document)

This page added to provide additional information required by NRS 111.312 Sections 1-2. (Additional recording fee applies)

*This cover page must be typed or legibly hand printed.*

**LEGEND**

- FOUND MAG NAIL AND WASHER, PLS 18135, 2007
- ▽ FOUND 1" ALUMINUM CAP ON 5/8" REBAR, PLS 18135, 2007
- SET MAG NAIL AND WASHER, PLS 18135, 2008
- ▲ SET 1" ALUMINUM CAP ON 5/8" REBAR, PLS 18135, 2008
- NOTHING FOUND OR SET



**R O Anderson**

1629 BERTERALDA AVENUE / POST OFFICE BOX 2229  
 HINDEN, NEVADA 89423  
 PHONE: (775) 782-2822 / FAX: (775) 782-7084  
 WEB SITE: WWW.ROANDERSON.COM

**NOTES**  
 SEE RECORD PLATS FOR  
 LOT DIMENSIONS

**CORNER RECORD**  
 A.P.N.S 1420-07-714-006 &-008 &-011  
 SE1/4 SEC. 10 T.14N., R.20E., MDM  
 DOUGLAS COUNTY, NEVADA

**DESCRIPTIONS**

PARCEL 1, AS SET FORTH ON PARCEL MAP LDA-99-075 FOR SUNRIDGE HEIGHTS OFFICE PARK FILED IN THE OFFICE OF THE COUNTY RECORDER OF DOUGLAS COUNTY, STATE OF NEVADA, ON JANUARY 19, 2000, BOOK 0100, PAGE 2691, DOCUMENT NO. 484629 (A.P.N. 1420-07-714-006)

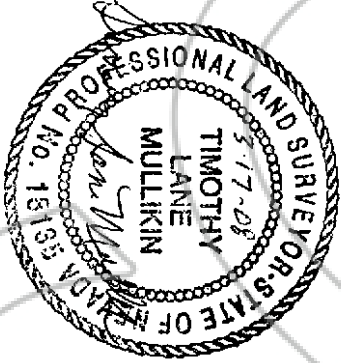
PARCEL 2, AS SET FORTH ON PARCEL MAP LDA-99-074 FOR SUNRIDGE HEIGHTS OFFICE PARK FILED IN THE OFFICE OF THE COUNTY RECORDER OF DOUGLAS COUNTY, STATE OF NEVADA, ON JANUARY 19, 2000, BOOK 0100, PAGE 2590, DOCUMENT NO. 484628 (A.P.N. 1420-07-714-008).

ADJUSTED PARCEL 2, RECORD OF SURVEY RECORDED MAY 3, 2007 IN BOOK 0507, PAGE 1301, AS DOCUMENT NO. 700430 (A.P.N. 1420-07-714-011)

**SURVEYOR'S CERTIFICATE**

I, TIMOTHY LANE MULLIKIN, A PROFESSIONAL LAND SURVEYOR REGISTERED IN THE STATE OF NEVADA, CERTIFY THAT:

- 1) THIS CORNER RECORD REPRESENTS THE ESTABLISHMENT OR RESTORATION OF A CORNER OR ACCESSORY TO A CORNER CONDUCTED UNDER MY DIRECT SUPERVISION.
- 2) THE MONUMENT OR ACCESSORIES PERPETUATED LIE WITHIN THE SOUTHEAST ONE-QUARTER, SECTION 7, T.14N., R.20E., M.D.M., AND THE ESTABLISHMENT OR RESTORATION WAS COMPLETED ON MARCH 11, 2008.
- 3) THIS CORNER RECORD HAS BEEN FILED PURSUANT TO NRS 329.140 OR 329.150 AND COMPLIES WITH THE PROVISIONS OF NAC 329.010 AND ANY LOCAL ORDINANCES IN EFFECT ON THE DATE THAT THE ESTABLISHMENT OR RESTORATION WAS COMPLETED.
- 4) THE MONUMENT OR WITNESS MONUMENT AND ACCESSORIES FOUND ARE OF THE CHARACTER SHOWN, OCCUPY THE POSITIONS INDICATED, AND ARE OF SUFFICIENT DURABILITY.



EXP 12-31-09

03/17/08  
 0818-005 CORNER RECORD.dwg