

14N24E
13N24E

Sheet 1 of 4
Sheet 3 of 4

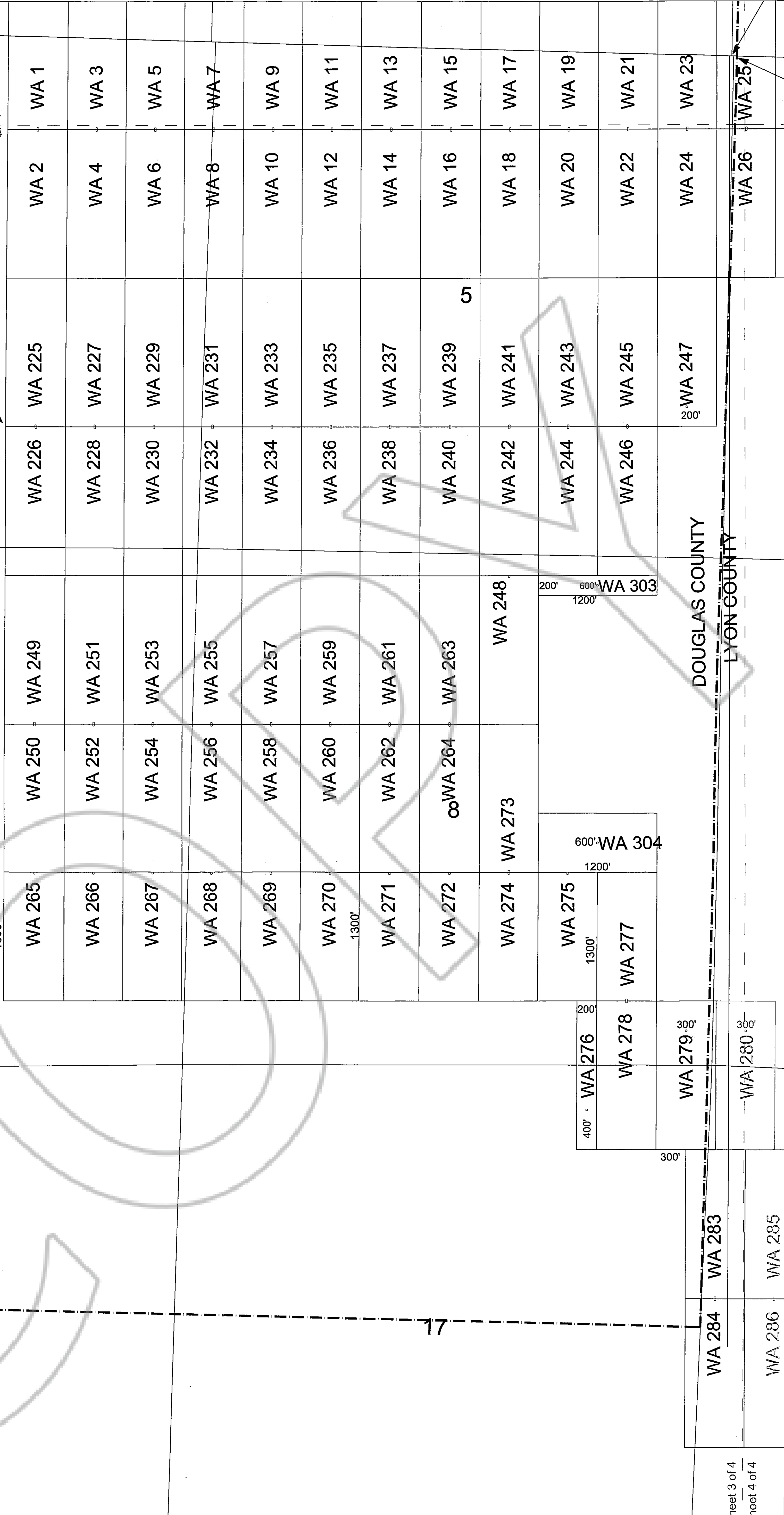
6

The NW Corner of WA 226 bears S38°40'E and is 5167' from the NW corner of Section 6 T13N R24E

7

18

17



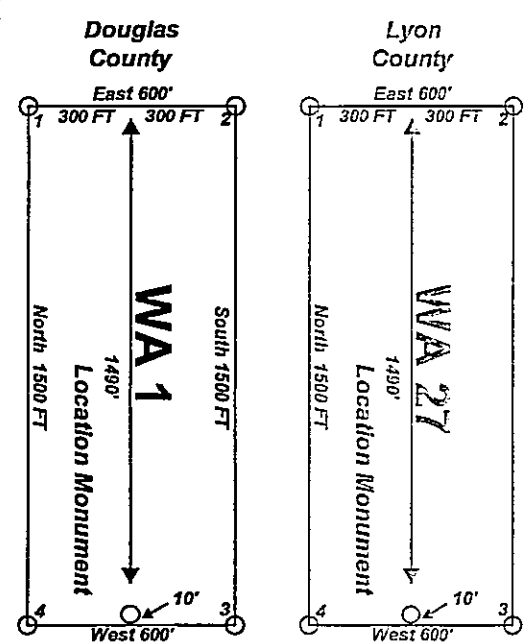
DOUGLAS COUNTY
LYON COUNTY

"WA" lode claims 1-56, 225-247, & 249-264 were located on 2-6-2008 and
 "WA" lode claims 57-141, 143, 145-160 were located on 2-7-2008 and
 "WA" lode claims 161-224 & 283-296 were located on 2-8-2008 and
 "WA" lode claims 142, 144, 248, 265-280, 303 and 304 were located on 2-9-2008 and
 "WA" lode claims 297-302, 305 and 306 were located on 2-10-2008 in
 Sections 3-6, 7-10, and 16-17 in Township 13 North Range 24 East and in Sections
 20-22, 27-29, and 31-34 in Township 14 North Range 24 East in Douglas and Lyon
 Counties, Nevada.

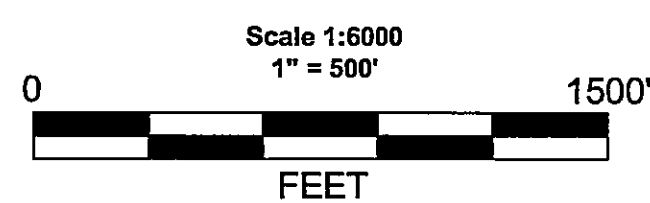
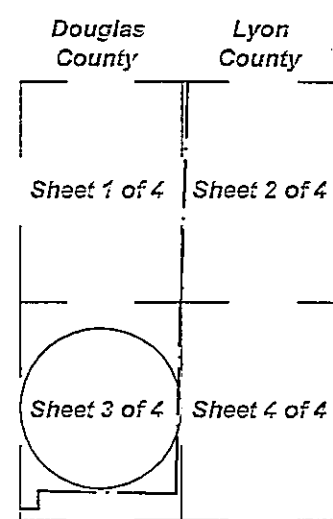
Locator:
Telkwa Gold Nevada Corporation
1 E. Liberty St., Suite 424
Reno, NV 89504

Claim Location Map for Douglas County
WA 1-280 and 283-306
Sheet 3 of 4

Typical Claim



Notes:
Location Monuments are set 10' from claim end lines unless noted otherwise. All location and corner monuments are 2" X 2" X 4" wooden posts with scribed metal tags. All claims are 600' by 1500' unless noted otherwise. All bearings are based on UTM North.



UTM N

| |
|--|
| MINING CLAIM LOCATION MAP WA 1-280 and 283-306 Lode Mining Claims |
| Telkwa Gold Nevada Corporation 1 E. Liberty St. Suite 424 Reno, NV 89504 |
| WA_Claims_1-280_and_283-306_N27211r.DWG February 15, 2008 Drawn By: G.I.S. Land Services |
| Surveyed By: T&T Exploration L.L.C. Datum: 1927 Projection: UTM Zone 11 Units: Feet |

TELKWA GOLD NEVADA CORP
DOC # 721622
SHEET 2 of 2 in Do. Co.

Sheet 3 of 4
Sheet 4 of 4

Doc# 721622
Sheet 2 of 2
Recorded by Co.