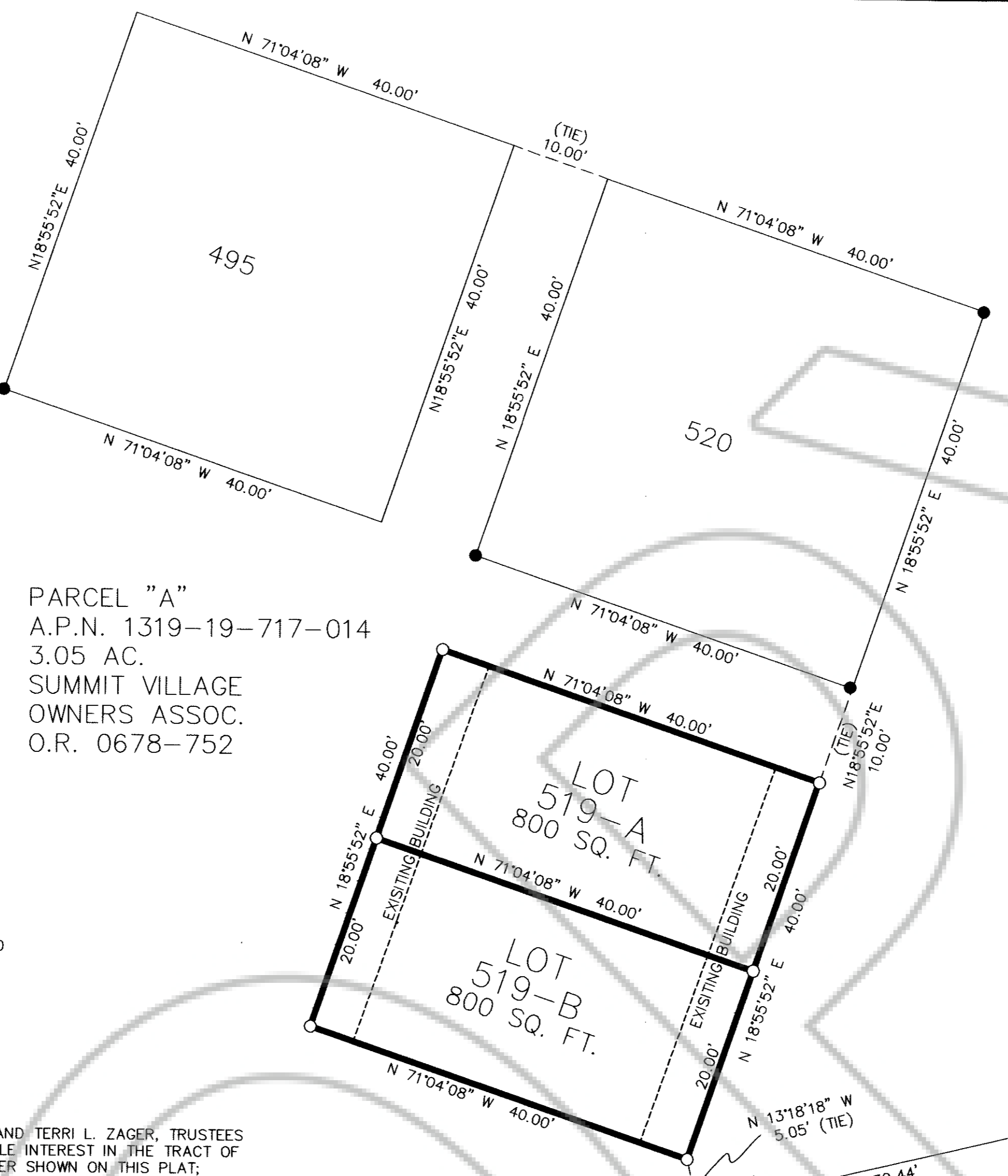


TO ACCOMPANY NINTH AMENDED MAP OF SUMMIT VILLAGE



PARCEL "A"
A.P.N. 1319-19-717-014
3.05 AC.
SUMMIT VILLAGE OWNERS ASSOC.
O.R. 0678-752

SURVEYORS CERTIFICATE
I, RONALD TURNER, A PROFESSIONAL LAND SURVEYOR LICENSED IN THE STATE OF NEVADA, CERTIFY THAT:
1. THIS IS A TRUE AND ACCURATE REPRESENTATION OF THE LANDS SURVEYED UNDER MY SUPERVISION AT THE INSTANCE OF CRAIG ZAGER.
2. THE LANDS SURVEYED LIE WITHIN A PORTION OF SECTION 19, TOWNSHIP 13 NORTH, RANGE 19 EAST, M.D.M., AND THE SURVEY WAS COMPLETED ON FEBRUARY 14, 2007.
3. THIS PLAT COMPLIES WITH THE APPLICABLE STATE STATUTES AND ANY LOCAL ORDINANCES.
4. THE MONUMENTS ARE OF THE CHARACTER SHOWN AND OCCUPY THE POSITIONS INDICATED.

Ronald W. Turner
RONALD W. TURNER, P.L.S. 3519

COUNTY ENGINEER'S CERTIFICATE:
I, CARL RUSCHMEYER, ENGINEER IN AND FOR THE COUNTY OF DOUGLAS, STATE OF NEVADA, HEREBY CERTIFY I HAVE EXAMINED THIS PLAT ENTITLED TENTH AMENDED MAP OF SUMMIT VILLAGE AND THAT SAID MAP OF SAID SUBDIVISION IS SUBSTANTIALLY AS IT APPEARS ON THE TENTATIVE MAP, THAT ALL CONDITIONS OF NRS 278.320 THROUGH 278.494, INCLUSIVE, AND LOCAL ORDINANCES HAVE BEEN COMPLIED WITH AND I AM SATISFIED THE SAME IS TECHNICALLY CORRECT.

Mohammad Azad
Mohammad Azad, P.E.
CARL RUSCHMEYER, COUNTY ENGINEER

- LEGEND**
- FOUND 3/4" IP WITH PLUG PLS 3519, OR AS NOTED
 - SET 3/4" IP & PLUG OR NAIL & TAG, PLS 3519, OR AS NOTED
 - NOTHING FOUND OR SET

- NOTES:**
- THIS MAP IS BEING FILED TO REFLECT THE DIVISION OF LOT 519.
 - MAINTENANCE OF ALL DRAINAGE FACILITIES AND EASEMENTS SHALL BE THE RESPONSIBILITY OF THE INDIVIDUAL PROPERTY OWNERS OR OTHER PRIVATE ENTITY, INCLUDING A HOMEOWNER'S ASSOCIATION. DOUGLAS COUNTY REJECTS ANY OFFER OF DEDICATION OF DRAINAGE FACILITIES OR DRAINAGE EASEMENTS.

BASIS OF BEARINGS
THE MERIDIAN OF THIS SURVEY IS IDENTICAL TO THAT OF THE SECOND AMENDED MAP OF SUMMIT VILLAGE BEING THE BEARING OF N71°04'08"E BETWEEN FOUND MONUMENTS AS SHOWN.

OWNER'S CERTIFICATE
THE UNDERSIGNED, CRAIG & TERRI ZAGER, CERTIFIES THAT THE ZAGER FAMILY TRUST IS THE OWNER OF ALL THE LANDS AS DELINEATED UPON THIS AMENDED MAP ENTITLED "TENTH AMENDED MAP OF SUMMIT VILLAGE" CONSISTING OF ONE SHEET; THAT WE CAUSED SAID MAP TO BE PREPARED FOR RECORD AND CONSENT TO THE PREPARATION AND RECORDATION OF SAID MAP.

Craig E. Zager *Terri L. Zager*
CRAIG E. ZAGER, TRUSTEE TERRI L. ZAGER, TRUSTEE
APN 1319-19-718-010

TITLE CERTIFICATE
THIS IS TO CERTIFY THAT CRAIG E. ZAGER AND TERRI L. ZAGER, TRUSTEES ARE THE ONLY PARTIES HAVING RECORD TITLE INTEREST IN THE TRACT OF LAND EMBRACED WITHIN THE GRAPHIC BORDER SHOWN ON THIS PLAT; THERE ARE NO LIENS OR MORTGAGES AGAINST THE PROPERTY, EXCEPT AS FOLLOWS:

DEED OF TRUST RECORDED MARCH 14, 2005
BOOK 0305 PAGE 10207, DOC. No. 639839

DEED OF TRUST RECORDED MARCH 21, 2005
BOOK 0306 PAGE 9295, DOC. No. 670843

COMMUNITY DEVELOPMENT CERTIFICATE
IT IS HEREBY CERTIFIED THAT THIS PLAT WAS REVIEWED AND APPROVED BY THE DOUGLAS COUNTY DEPARTMENT OF COMMUNITY DEVELOPMENT ON THE 5TH DAY OF DECEMBER, 2008. THIS PLAT IS IN SUBSTANTIAL CONFORMANCE WITH THE TENTATIVE MAP AND ALL CONDITIONS OF APPROVAL HAVE BEEN SATISFIED. IN ADDITION, THERE ARE NO PUBLIC ROADS OR PUBLIC USE ELEMENTS OFFERED FOR DEDICATION AS A PART OF THE MAP.

Harmon Zuckerman 12/5/08
HARMON ZUCKERMAN, PRINCIPAL PLANNER

BUREAU OF SAFE DRINKING WATER
THIS FINAL MAP IS APPROVED BY THE NEVADA DIVISION OF ENVIRONMENTAL PROTECTION OF THE DEPARTMENT OF CONSERVATION AND NATURAL RESOURCES CONCERNING SEWAGE DISPOSAL, WATER POLLUTION, WATER QUALITY, AND WATER SUPPLY FACILITIES IN ACCORDANCE WITH NEVADA REVISED STATUTES. THIS APPROVAL PREDICATED COMMUNITY WATER SUPPLY AND COMMUNITY SEWAGE DISPOSAL.

Steve Megoff 11/25/08
STEVE MEGOFF, P.E.
DEPARTMENT OF ENVIRONMENTAL PROTECTION

DIVISION OF WATER RESOURCES APPROVAL:
THIS FINAL MAP IS APPROVED BY THE NEVADA DIVISION OF WATER RESOURCES OF THE DEPARTMENT OF CONSERVATION AND NATURAL RESOURCES CONCERNING WATER QUANTITY SUBJECT TO THE REVIEW OF APPROVAL ON FILE IN THIS OFFICE. THIS APPROVAL WAS MADE AT THE TIME OF RECORDING OF THE SECOND AMENDED MAP OF SUMMIT VILLAGE, DOCUMENT NO. 43419.

Thomas K. Gallagher 11/25/08
THOMAS K. GALLAGHER, P.E.
DIVISION OF WATER RESOURCES

FIRE DEPARTMENT'S CERTIFICATE
THE FIREFIGHTING FACILITIES AND ACCESS SHOWN ON THIS MAP ARE HEREBY APPROVED BY THE EAST FORK FIRE PROTECTION SERVICE.

Rick A. Nicholson 11/25-08
STEVE EIGLE, RICK A. NICHOLSON
EAST FORK FIRE PROTECTION SERVICE
FIRE MARSHAL
TAHOE DOUGLAS FIRE PROTECTION DISTRICT

SUMMIT VILLAGE OWNERS ASSOCIATION
APPROVED AND ACCEPTED THIS 25 DAY OF January, 2008, BY SUMMIT VILLAGE OWNERS ASSOCIATION.

Robert J. Attinger
ROBERT J. ATTINGER, PRESIDENT
SUMMIT VILLAGE OWNERS ASSOCIATION

COUNTY TAX COLLECTOR'S CERTIFICATE:
I, BARBARA J. GRIFFIN, COUNTY CLERK-TREASURER AND EX-OFFICIO TAX COLLECTOR IN AND FOR THE COUNTY OF DOUGLAS, STATE OF NEVADA, DO HEREBY CERTIFY THAT ALL PROPERTY TAXES ON THIS LAND FOR THE FISCAL YEAR HAVE BEEN PAID.

Ted K. Thran 12-8-08
BARBARA J. GRIFFIN, COUNTY CLERK-TREASURER
TED K. THRAN

COUNTY CLERK'S CERTIFICATE:
IT IS HEREBY CERTIFIED THAT THIS PLAT WAS PRESENTED TO THE DEPARTMENT OF COMMUNITY DEVELOPMENT ON THE 5TH DAY OF DECEMBER, 2008, AND WAS DULY APPROVED. IN ADDITION, THERE ARE NO PUBLIC ROADS OR OTHER PUBLIC USE ELEMENTS OFFERED FOR DEDICATION AS PART OF THIS MAP.

Ted K. Thran 12-8-08
BARBARA J. GRIFFIN, COUNTY CLERK
TED K. THRAN

COUNTY RECORDER'S CERTIFICATE
FILED FOR RECORD THIS 13 DAY OF DECEMBER, 2008, AT 49 MINUTES PAST 10 O'CLOCK P.M., IN BOOK 1208 OF OFFICIAL RECORDS AT PAGE 4291, DOCUMENT NUMBER 734864, RECORDED AT THE REQUEST OF CRAIG ZAGER.

Doreen M. ...
DOUGLAS COUNTY RECORDER

STATE OF NV COUNTY OF DOUGLAS SS:
ON THIS 26 DAY OF November, IN THE YEAR 2008, BEFORE ME, A NOTARY PUBLIC, PERSONALLY APPEARED CRAIG E. ZAGER AND TERRI L. ZAGER PERSONALLY KNOWN BY ME TO BE THE PERSONS WHOSE NAMES ARE SUBSCRIBED TO THE ABOVE INSTRUMENT AND ACKNOWLEDGE THAT THEY EXECUTED THE INSTRUMENT.

WITNESS MY HAND AND OFFICIAL SEAL
Jodi A. Stovall
NOTARY'S SIGNATURE Jodi A. Stovall
MY COMMISSION EXPIRES: 11-15-10

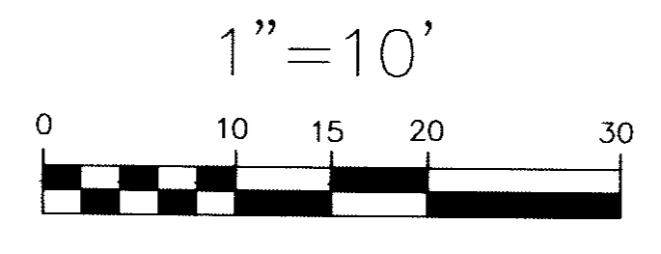
UTILITIES COMPANIES CERTIFICATE
THIS MAP IS IN SUBSTANTIAL COMPLIANCE WITH THE TENTATIVE MAP ENTITLED 2ND AMENDED MAP OF SUMMIT VILLAGE AS APPROVED BY THE DOUGLAS COUNTY PLANNING COMMISSION ON THE 12TH DAY OF DECEMBER, 1988.

BY: *Carl S. ...* 08/15/2008
SIERRA PACIFIC POWER COMPANY DATE

BY: *James Poate* 12/2/08
VERIZON DATE

BY: *Larry Gibson* 11/16/08
SOUTHWEST GAS DATE

BY: *Michelle Runtz* 11/13/08
KINGSBURY GENERAL IMPROVEMENT DISTRICT DATE



TURNER & ASSOCIATES, INC.
LAND SURVEYING
(775) 588-5658
FAX (775) 588-9296
308 DORLA COURT, SUITE 203 - ROUND HILL, NEVADA 89448
P.O. BOX 5067 - STATELINE, NEVADA 89449

SCALE: 1"=10' SHEET 1 OF 1
TENTH AMENDED MAP OF SUMMIT VILLAGE, LOT 519 LDA 06-058 FOR CRAIG ZAGER
A PORTION OF THE NW1/4 SECTION 19, T.13N., R.19E., M.D.M.
DOUGLAS COUNTY, NEVADA
LDD FILE: 06137.DWG JULY 2006