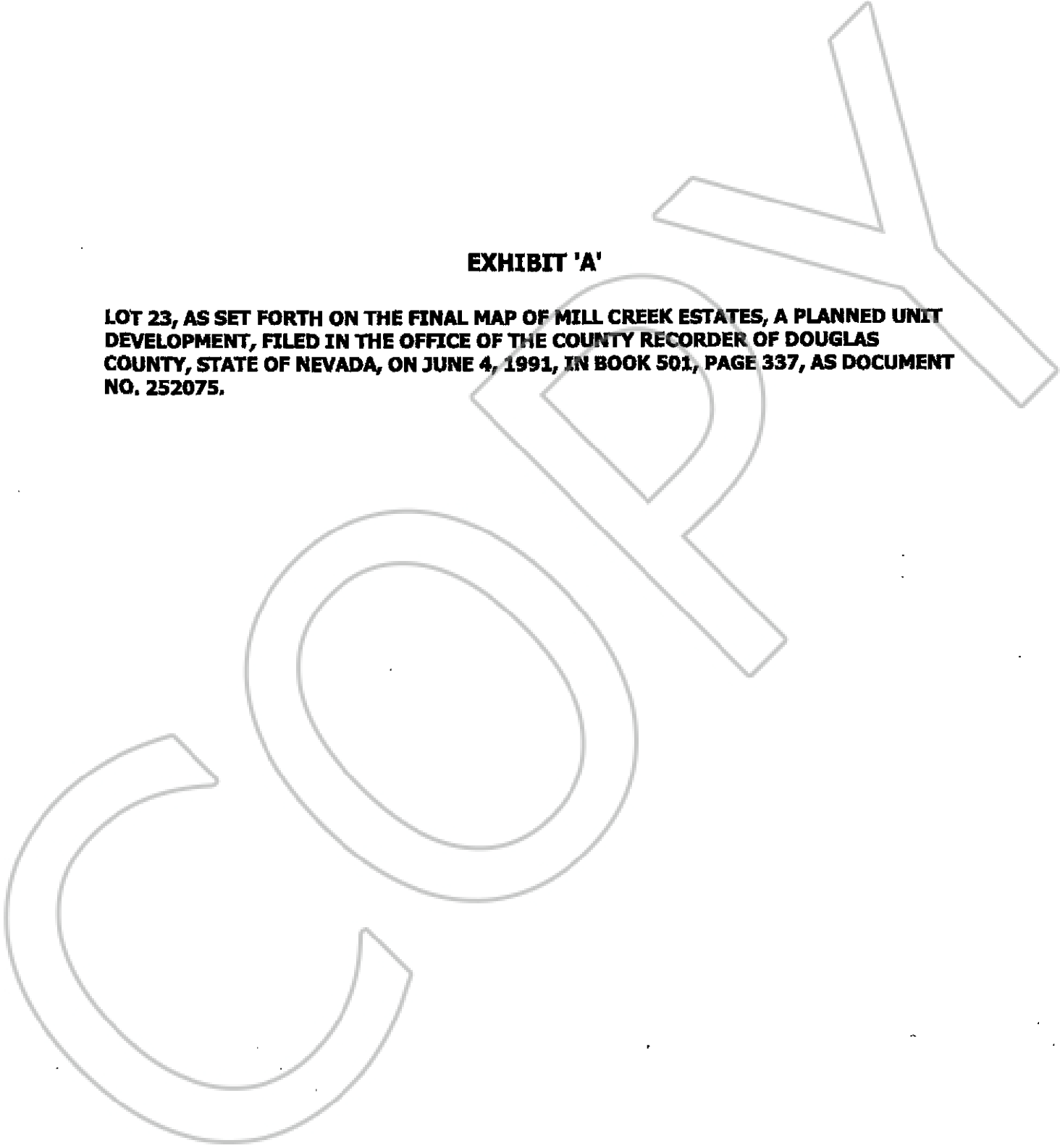


EXHIBIT 'A'

LOT 23, AS SET FORTH ON THE FINAL MAP OF MILL CREEK ESTATES, A PLANNED UNIT DEVELOPMENT, FILED IN THE OFFICE OF THE COUNTY RECORDER OF DOUGLAS COUNTY, STATE OF NEVADA, ON JUNE 4, 1991, IN BOOK 501, PAGE 337, AS DOCUMENT NO. 252075.



BK-409
PG-4617